



Manuals.plus /

› B BraiNice /

› B BraiNice Universal Remote Control for Samsung Smart TVs (2019-2025) with Voice Control User Manual

## B BraiNice Samsung-2019-2025

# B BraiNice Universal Remote Control for Samsung Smart TVs (2019-2025) User Manual

Model: Samsung-2019-2025 | Brand: B BraiNice

[Introduction](#)

[Compatibility](#)

[Setup](#)

[Operating Instructions](#)

[Maintenance](#)

[Troubleshooting](#)

[Specifications](#)

[Warranty & Support](#)

## 1. INTRODUCTION

This manual provides comprehensive instructions for the B BraiNice Universal Remote Control, designed for Samsung Smart TVs manufactured between 2019 and 2025. This remote offers voice control capabilities and is intended to replace various original Samsung remote models. Please read this manual carefully to ensure proper setup and operation.

## 2. COMPATIBILITY

This remote control is compatible with a wide range of Samsung Smart TVs from 2019 to 2025, including models with Tizen OS. It supports voice control functionality on TVs that have built-in Bluetooth hardware for voice commands.

### Compatible TV Series:

- Samsung Neo QLED
- Samsung OLED
- Samsung QLED
- Samsung Crystal UHD

- Samsung Frame TV series
- Samsung Serif
- Samsung Terrace
- Samsung Sero
- Samsung Micro LED
- Samsung Monitor Series Smart TVs

### Replaceable Remote Models:

This remote can replace many original Samsung remote models, including but not limited to:

- BN59-01385A/B
- BN59-01432A
- BN59-01455A
- BN59-01357A/F
- BN59-01312 series (e.g., BN59-01312A, BN59-01312F, BN59-01312D)
- BN59-01329 series
- BN59-01330 series

**Note:** For older Samsung TVs (2016, 2017 models), some shortcut buttons or voice functions may not be fully supported or may work improperly if the original TV hardware does not support these features.

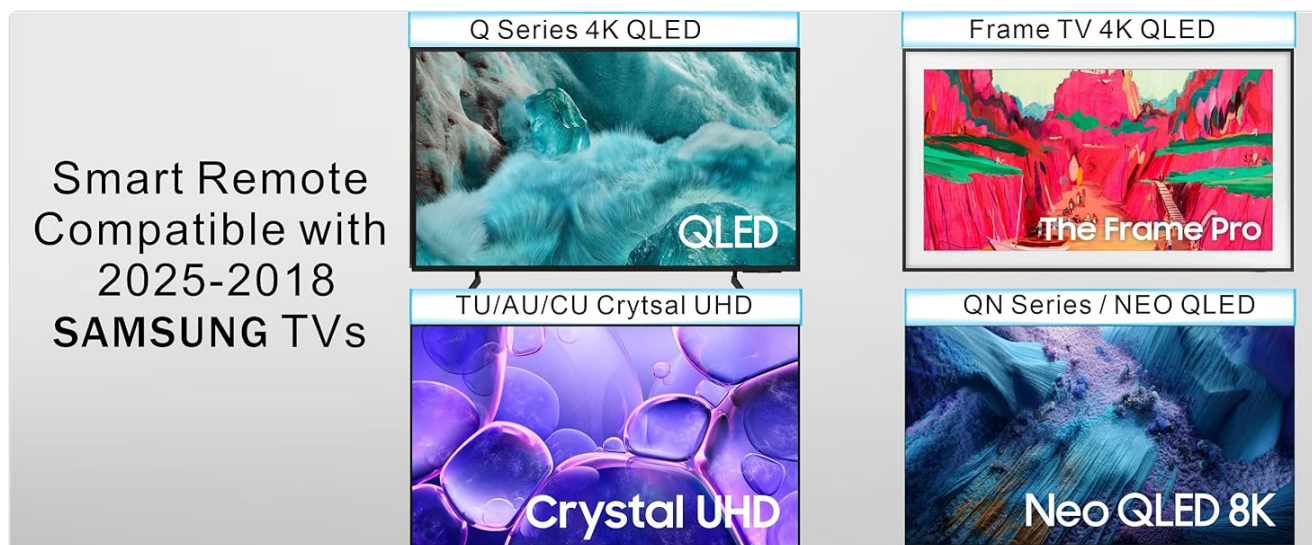


Figure 2.1: Compatible Samsung TV Series



### 3. SETUP

#### 3.1 Installing Batteries

The remote requires two AAA batteries (not included). To install:

1. Gently slide down the back cover of the remote control.
2. Insert two AAA batteries, ensuring correct polarity (+/-).
3. Slide the back cover upwards until it clicks into place.



Figure 3.1: Battery Installation

#### 3.2 Pairing the Remote with Your Samsung TV

To enable voice control and full functionality, the remote must be paired with your Samsung TV. A Samsung TV can typically be paired with only one specific remote at a time. If you have an old remote, remove its batteries to prevent interference.

1. Turn on your Samsung TV.
2. Point the new remote at the TV from a distance of 1-2 feet.
3. Press and hold the **Back** button (

Compatible with **Samsung TV** Series from 2025-2016

for these models

Crystal UHD

OLED series

Neo QLED

Serif

Frame TV series

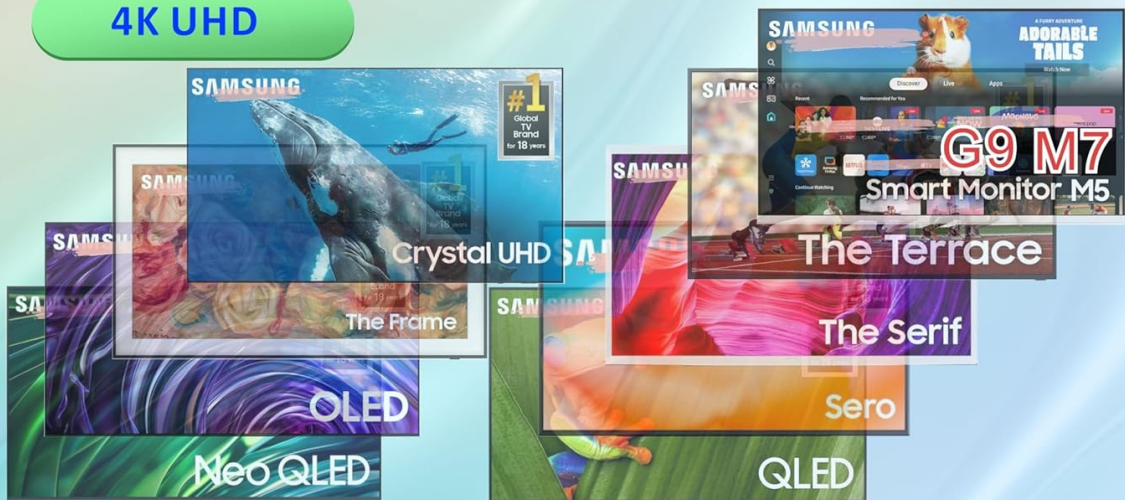
QLED

Monitor

Sero

Terrace

4K UHD



**Voice function is available on Samsung TVs support Bluetooth**

) and the **Play/Pause** button (

Compatible with **Samsung TV** Series from 2025-2016

for these models

Crystal UHD

OLED series

Neo QLED

Serif

Frame TV series

QLED

Monitor

Sero

Terrace

4K UHD



**Voice function is available on Samsung TVs support Bluetooth**

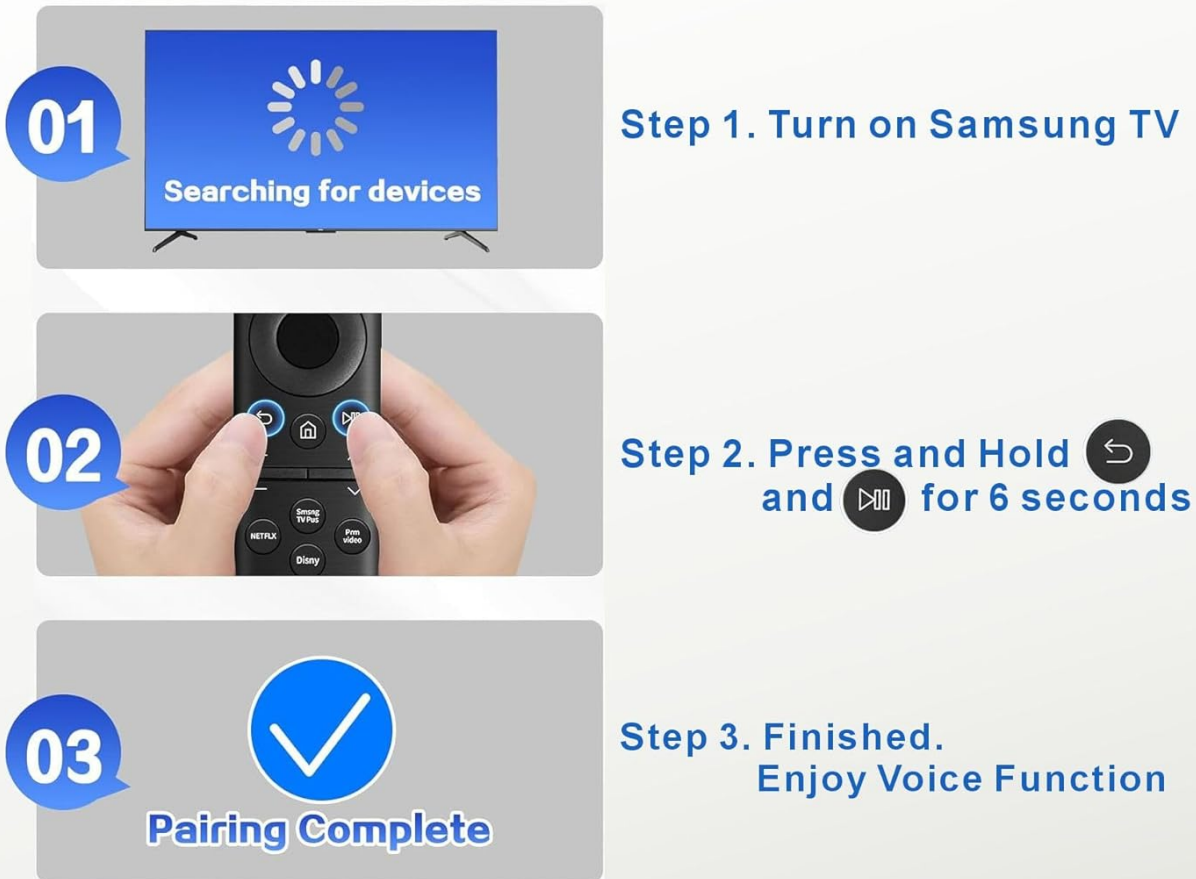
) simultaneously for approximately 6 seconds.

4. The TV screen will display a message indicating that it is searching for devices and then confirm "Pairing Complete" once successful.

Your browser does not support the video tag.

Video 3.2.1: How to Pair the Remote with Samsung TV. This video demonstrates the steps for pairing the remote control with a Samsung television, showing the buttons to press and the on-screen confirmation.

# How to Pair



Note: A Samsung TV can pair with Up to one remote.  
Please remove the batteries from the old remote control;  
otherwise, it may occasionally fail to work properly.

Figure 3.2: Remote Pairing Steps

After successful pairing, you can utilize the voice control function.

## 4. OPERATING INSTRUCTIONS

The B BraiNice Universal Remote Control provides intuitive navigation and control over your Samsung Smart TV.

Compatible with **Samsung TV** Series from 2025-2016

for these models

Crystal UHD

OLED series

Neo QLED

Serif

Frame TV series

QLED

Monitor

Sero

Terrace

4K UHD



Voice function is available on Samsung TVs support Bluetooth

Figure 4.1: Remote Control Layout

## 4.1 Basic Functions

- **Power Button:** Located at the top, press to turn the TV on or off.
- **Navigation Pad (Circular):** Use the directional buttons to navigate menus and select items. The center button acts as 'Enter' or 'OK'.
- **Volume Buttons (+/-):** Adjust the TV volume.
- **Channel Buttons (Up/Down):** Change TV channels.
- **Home Button:** Returns to the TV's Smart Hub or home screen.
- **Back Button:** Returns to the previous screen or menu.
- **Play/Pause, Fast Forward, Rewind:** Control media playback.

## 4.2 Voice Control

After successful pairing, the voice control feature allows for hands-free operation.

1. Press the **Microphone Button** (located near the top of the remote).
2. Speak your command clearly into the remote's microphone.

### Examples of Voice Commands:

- "Find [movie/show title]"
- "Open Netflix"
- "Increase volume" or "Decrease volume"
- "Go to settings"

Voice commands work reliably within approximately 10 meters (33 feet) from the TV.

## Control your Samsung TV with the voice remote

*Find movies  
and shows*

*Play  
music*

*Control  
the volume*



*Pair before Use*

Figure 4.2: Voice Control Feature

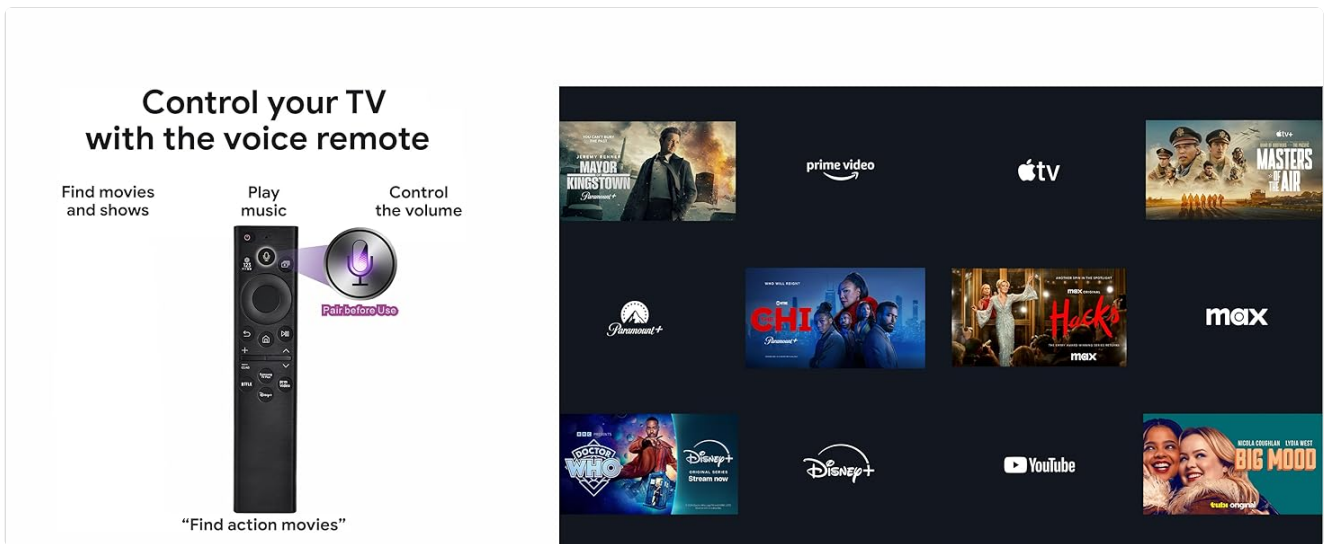


Figure 4.3: Using Voice Control

### 4.3 Shortcut Buttons

The remote includes dedicated shortcut buttons for quick access to popular streaming services:

- **NETFLIX**
- **Disney+**
- **Prime Video**
- **Samsung TV Plus**

Pressing these buttons will directly launch the corresponding application on your Samsung TV, provided the app is installed and your TV supports the feature.

# Advanced Bluetooth Technology Easy To Use



Figure 4.4: Shortcut Buttons

## 5. MAINTENANCE

### 5.1 Cleaning

To clean the remote, use a soft, dry cloth. Do not use liquid cleaners, sprays, or abrasive materials, as these can damage the remote's surface or internal components.

### 5.2 Battery Replacement

Replace batteries when the remote's response becomes sluggish or it stops functioning. Always replace both AAA batteries at the same time with new ones. Do not mix old and new batteries or different types of batteries.

## 6. TROUBLESHOOTING

If you encounter issues with your B BraiNice Universal Remote Control, refer to the following common solutions:

Problem	Solution
Remote is not responding.	<ul style="list-style-type: none"> <li>• Check if batteries are correctly installed and have sufficient charge. Replace if necessary.</li> <li>• Ensure there are no obstructions between the remote and the TV.</li> <li>• Re-pair the remote with the TV (refer to Section 3.2).</li> </ul>
Voice control is not working.	<ul style="list-style-type: none"> <li>• Ensure the remote is successfully paired with the TV (refer to Section 3.2).</li> <li>• Confirm your Samsung TV model supports Bluetooth voice control.</li> <li>• Speak clearly and hold the remote within 10 meters (33 feet) of the TV.</li> </ul>
Shortcut buttons do not work.	<ul style="list-style-type: none"> <li>• Verify that the corresponding applications are installed on your Samsung TV.</li> <li>• Some older TV models (e.g., 2016, 2017) may not support all shortcut functions.</li> <li>• Ensure the remote is paired correctly.</li> </ul>
Remote occasionally fails to work properly.	<ul style="list-style-type: none"> <li>• If you have an old remote, remove its batteries to prevent signal interference.</li> <li>• Ensure the remote has a clear line of sight to the TV.</li> </ul>

## 7. SPECIFICATIONS

Feature	Detail
Product Dimensions	6 x 3 x 1.5 inches
Item Weight	1.76 ounces
Batteries Required	2 AAA batteries
Connectivity	Bluetooth (for voice control), Infrared (for basic functions)
Special Features	Universal compatibility, Voice Search, 4 Shortcut buttons (Netflix, Disney+, Prime Video, Samsung TV Plus)
Compatible TV Years	2019-2025 Samsung Smart TVs
Voice Control Range	Up to 40 inches (approx. 10 meters / 33 feet)
Material	Sustainable ABS plastic
Button Durability	Designed to withstand over 100,000 presses

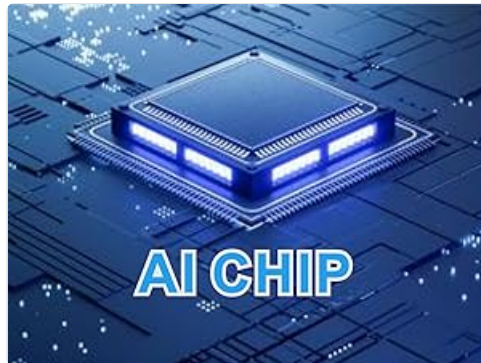


Figure 7.1: Advanced Chip Technology



## Why choose **This Remote**

Good Reputation



High Quality



120,000 clicks  
Fast response in 0.2s

Advanced CHIP



Passed drop test



Figure 7.2: Remote Control Features and Durability

## 8. WARRANTY AND SUPPORT

### 8.1 2-Year Full Warranty

This B BraiNice Universal Remote Control is protected by a 2-year full warranty from the date of purchase. This warranty covers manufacturing defects and ensures the product meets its stated performance. For warranty claims or support, please contact the seller or manufacturer directly.

### 8.2 Customer Support

For further assistance, technical support, or inquiries not covered in this manual, please refer to the contact information provided by your retailer or the B BraiNice official support channels.