

## Mikuni MK-BSR36-89

# Mikuni Carburetor Rebuild Kit for BSR36-89 Carburetors

Model: MK-BSR36-89

## INTRODUCTION

This manual provides essential information for the proper use and installation of the Mikuni Carburetor Rebuild Kit, specifically designed for Mikuni BSR36-89 Carburetors. This kit contains genuine Mikuni components necessary for restoring the performance of your carburetor. Please read all instructions carefully before beginning the rebuild process.

**WARNING: This product can expose you to chemicals including lead, which is known to the State of California to cause cancer and birth defects or other reproductive harm. For more information go to [www.P65Warnings.ca.gov](http://www.P65Warnings.ca.gov).**

## PRODUCT OVERVIEW AND COMPONENTS

The Mikuni Carburetor Rebuild Kit (MK-BSR36-89) includes a comprehensive assortment of critical parts to facilitate a thorough rebuild of one Mikuni BSR36-89 Carburetor. These parts are designed to replace worn or damaged components, ensuring optimal carburetor function.



**WARNING:** Cancer and  
Reproductive Harm -  
[www.P65Warnings.ca.gov](http://www.P65Warnings.ca.gov)

# MIKUNI

**GENUINE COMPONENTS**



Made in Japan. Packaged in U.S.A.

8910 Mikuni Avenue • Northridge, CA 91324

**Figure 1:** Complete Mikuni Carburetor Rebuild Kit as packaged, displaying all included gaskets, seals, springs, and hardware.





**Figure 3:** Detailed view of larger components from the kit, such as the diaphragm, various O-rings, and springs.

### **Kit Contents (MK-BSR36-89)**

The following table lists the components typically included in the rebuild kit. Please note that due to model variations, this kit does not include Main Jets, Pilot Jets, or Needles.

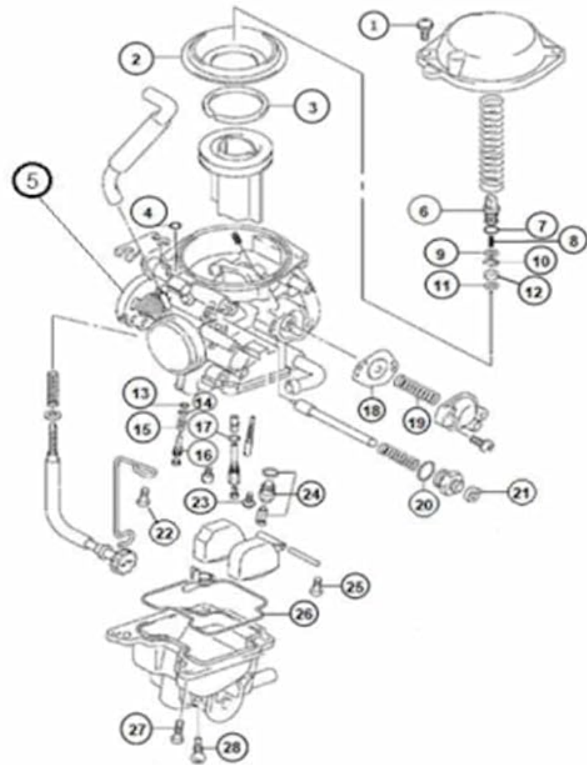
ITEM	QTY	DESCRIPTION
1	2	SCREW, TOP CAP
2	1	DIAPHRAGM
3	1	RING
4	1	O-RING
5	1	O-RING, COVER
6	1	HOLDER
7	1	O-RING
8	1	WASHER
9	1	E-CLIP
10	1	WASHER
11	1	RING
12	1	O-RING
13	1	WASHER
14	1	SPRING
15	1	FUEL SCREW
16	1	O-RING
17	1	DIAPHRAGM
18	1	SPRING
19	1	O-RING
20	1	CAP
21	1	SCREW, BOWL
22	1	SCREW, FLOAT VALVE 2.5
23	1	FLOAT VALVE
24	1	SCREW, FLOAT
25	1	GASKET, BOWL
26	3	SCREW, BOWL
27	1	SCREW, BOWL DRAIN

*Note: The diagram (Figure 4) provides a visual reference for the location of these components within a typical BSR36-89 carburetor.*

ITEM	QTY	DESCRIPTION
1	2	SCREW, TOP CAP
2	1	DIAPHRAGM
3	1	RING
4	1	O-RING
5	1	O-RING, COVER
6	1	HOLDER
7	1	O-RING
8	1	SPRING
9	1	WASHER
10	1	E-CLIP
11	1	WASHER
12	1	RING
13	1	O-RING
14	1	WASHER
15	1	SPRING
16	1	FUEL SCREW
17	1	O-RING
18	1	DIAPHRAGM
19	1	SPRING
20	1	O-RING
21	1	CAP
22	1	SCREW, BOWL
23	1	SCREW, FLOAT VALVE 2.5
24	1	FLOAT VALVE
25	1	SCREW, FLOAT
26	1	GASKET, BOWL
27	3	SCREW, BOWL
28	1	SCREW, BOWL DRAIN

**MK-BSR36-89**

APPLICATION:  
MULTIPLE CHINESE MODELS  
OEM BSR36-89



**\*\*REPLACEMENT JET NOTE**

Due to varying model requirements, this kit does not include main or pilot jets  
If needed, refer to the following Mikuni Part numbers when acquiring these jets:  
Main Jet: N102221-XXXX  
Pilot Jet: N224103-XXXX

Figure 4: Exploded view diagram of a Mikuni BSR36-89 Carburetor, indicating the position of various components included in the rebuild kit.

## INSTALLATION GUIDELINES

---

Rebuilding a carburetor requires mechanical aptitude and attention to detail. It is recommended that this procedure be performed by a qualified technician. Always refer to your vehicle's specific service manual for detailed carburetor removal and reinstallation procedures.

### Required Tools (Not Included):

- Screwdrivers (Phillips and Flathead)
- Socket/Wrench Set
- Pliers
- Carburetor Cleaner
- Compressed Air
- Clean Work Area

### General Rebuild Steps:

1. **Disassembly:** Carefully disassemble the carburetor, noting the position and orientation of all components. Take photos if necessary.
2. **Cleaning:** Thoroughly clean all carburetor components using a suitable carburetor cleaner. Ensure all passages and jets are free of debris and varnish. Use compressed air to blow out passages.
3. **Inspection:** Inspect all components for wear, damage, or corrosion. Replace any worn parts with the new components from the rebuild kit. Pay close attention to O-rings, gaskets, and diaphragms.
4. **Assembly:** Reassemble the carburetor using the new components from the kit. Lubricate O-rings and seals with a small amount of clean fuel or appropriate lubricant to prevent pinching during assembly. Refer to the exploded diagram (Figure 4) for component placement.
5. **Float Level Adjustment:** After assembly, verify and adjust the float level according to your vehicle's service manual specifications. This is crucial for proper fuel delivery.
6. **Final Checks:** Ensure all screws are tightened to specifications (do not overtighten). Verify that all moving parts operate smoothly.

## TROUBLESHOOTING COMMON ISSUES

---

If you encounter issues after rebuilding your carburetor, consider the following common problems and solutions:

- **Fuel Leaks:**
  - *Cause:* Pinched or improperly seated O-rings/gaskets, loose screws, damaged float needle valve.
  - *Solution:* Recheck all O-rings and gaskets for proper seating. Ensure bowl screws are tightened correctly. Inspect the float needle valve for debris or wear.
- **Engine Flooding/Rich Condition:**
  - *Cause:* Incorrect float level, sticking float, debris in needle valve seat.
  - *Solution:* Verify and adjust float level. Clean float pivot and needle valve seat.
- **Engine Lean Condition/Stalling:**

- *Cause:* Clogged passages (despite cleaning), air leaks, incorrect fuel screw adjustment.
  - *Solution:* Re-clean all passages. Check for air leaks around manifold and carburetor joints. Adjust fuel screw according to vehicle specifications.
- **Poor Idling:**
    - *Cause:* Clogged pilot jet (not included in kit, but important to check), incorrect idle speed screw adjustment, air leaks.
    - *Solution:* Clean pilot jet. Adjust idle speed. Check for air leaks.

If issues persist, consult a professional mechanic or refer to a detailed service manual for your specific vehicle.

## SPECIFICATIONS

- **Product Name:** Mikuni Carburetor Rebuild Kit
- **Model Number:** MK-BSR36-89
- **Compatibility:** Mikuni BSR36-89 Carburetors
- **Manufacturer:** Mikuni
- **Country of Origin:** Japan
- **Item Weight:** Approximately 4 ounces
- **Package Dimensions:** Approximately 8 x 5.75 x 0.75 inches
- **Kit Contents:** Assortment of gaskets, diaphragms, seals, hardware (does NOT include Main Jets, Pilot Jets, or Needles).

## WARRANTY AND SUPPORT

Mikuni products are manufactured to high standards. For specific warranty information regarding this rebuild kit, please refer to the official Mikuni website or contact Mikuni customer support directly. Keep your purchase receipt as proof of purchase.

### Contact Information:

For technical assistance or inquiries about genuine Mikuni parts, please visit the official Mikuni American Corporation website or contact their support channels. You can also visit the [Mikuni Store on Amazon](#) for more products and information.

#### **Mikuni American Corporation**

8910 Mikuni Avenue  
Northridge, CA 91324  
United States

© 2025 Mikuni American Corporation. All rights reserved.

This manual is for informational purposes only. Mikuni is not responsible for any damage or injury resulting from improper installation or use of this product.

