

Manuals+

[Q & A](#) | [Deep Search](#) | [Upload](#)

manuals.plus /

› [Nonbliep](#) /

› [Nonbliep Wireless Controller Instruction Manual for Nintendo Switch, Switch Lite, Switch OLED, PC, Android, and iOS](#)

Nonbliep B0DWSWH7LP

Nonbliep Wireless Controller Instruction Manual

Model: B0DWSWH7LP

Brand: Nonbliep

1. INTRODUCTION

This manual provides detailed instructions for the setup, operation, and maintenance of your Nonbliep Wireless Controller. This controller is designed for compatibility with Nintendo Switch, Switch 2, Switch Lite, Switch OLED, Windows PC, Android, and iOS devices, offering an enhanced gaming experience with features such as dual vibration, Turbo function, and motion control.



Image 1.1: Two Nonbliep Wireless Controllers

The Nonbliep Wireless Controller offers a comfortable grip and responsive controls for various gaming platforms.

Your browser does not support the video tag.

Video 1.1: Product Showcase of the Nonbliep Wireless Controller

This video demonstrates the design and functionality of the Nonbliep Wireless Controller, highlighting its features and compatibility.

2. PACKAGE CONTENTS

Please verify that all items are present in your package:

- 2 x Nonbliep Wireless Controllers
- 2 x USB-C Charging Cables
- 1 x User Manual (this document)

3. CONTROLLER LAYOUT

Familiarize yourself with the buttons and features of your Nonbliep Wireless Controller:



Image 3.1: Nonbliep Wireless Controller Button Layout

This diagram illustrates the position and function of each button, joystick, and port on the controller, including the Turbo button, HOME button, Capture button, D-Pad, A/B/X/Y buttons, Left/Right sticks, L/R/ZL/ZR triggers, and the USB-C port.

- **Left Stick:** For movement and navigation.
- **D-Pad:** Directional input.
- **Turbo Button:** Activates/deactivates Turbo function.
- **Minus (-) / Plus (+) Buttons:** Menu selection.
- **HOME Button:** Returns to the home screen, powers on/off, and wakes up the console.
- **Capture Button:** Takes screenshots.
- **A/B/X/Y Buttons:** Action buttons.
- **Right Stick:** For camera control and aiming.
- **L/R/ZL/ZR Triggers:** Shoulder buttons and triggers.
- **USB-C Port:** For charging the controller.
- **LED Indicators:** Display connection status and player number.

4. SETUP AND PAIRING

4.1. Pairing with Nintendo Switch

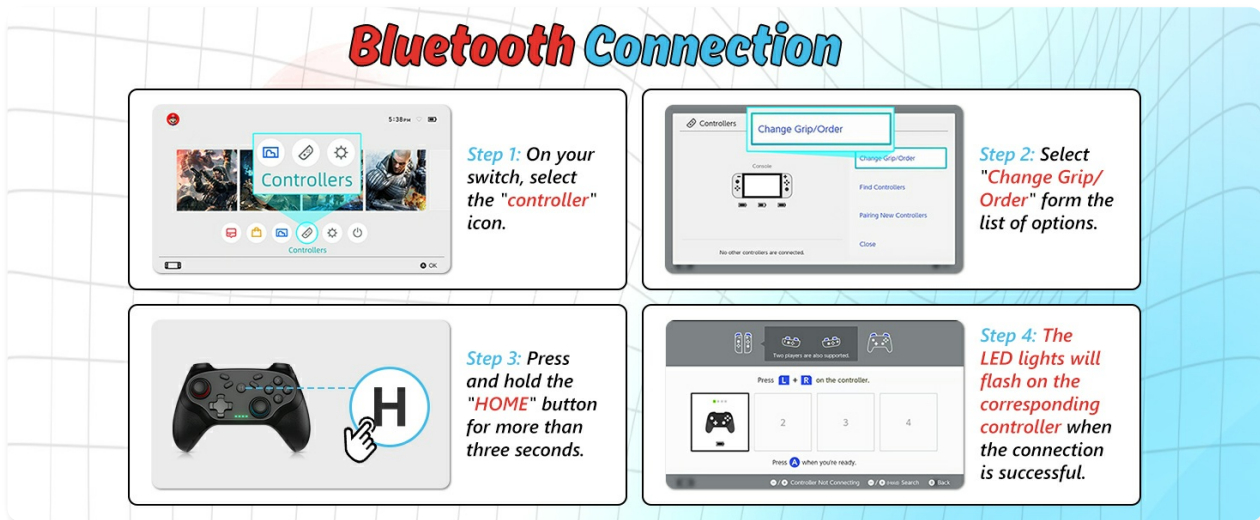


Image 4.1: Bluetooth Connection Steps for Nintendo Switch

This image illustrates the process of pairing the controller with a Nintendo Switch console.

1. On your Nintendo Switch, navigate to the HOME Menu.
2. Select the "Controllers" icon.
3. Choose "Change Grip/Order" from the options.
4. Press and hold the **HOME** button on your Nonbliep controller for more than three seconds. The LED lights on the controller will flash, indicating it is searching for a connection.
5. Once connected, the corresponding LED light(s) on the controller will remain solid, and the Switch screen will confirm the connection.

Note: This controller supports waking up the original Switch console by pressing the HOME button. This function may not be available for the second generation Switch.

4.2. Pairing with PC/Android/iOS

The controller supports Bluetooth connection for PC, Android, and iOS devices. Refer to your device's Bluetooth settings for specific pairing instructions. Generally, you will need to:

1. Enable Bluetooth on your device.
2. Put the controller into pairing mode (usually by holding the HOME button or a specific pairing button).
3. Select the controller from the list of available Bluetooth devices on your device.

5. OPERATING INSTRUCTIONS

5.1. Dual Vibration

The controller features built-in dual motion motors that provide 4-level vibration feedback, enhancing immersion during gameplay. The intensity of the vibration can often be adjusted within the game or console settings.



Image 5.1: Dual Vibration and Motion Control Features

The controller provides tactile feedback through dual vibration and supports precise motion control.

5.2. Turbo Function

The Turbo function allows for rapid, automatic button presses, which can be useful in certain games. You can switch between manual and auto Turbo modes and select from three speed levels:

- 8 rounds/second
- 15 rounds/second
- 25 rounds/second

TURBO Function

It's freely to switch between manual and auto TURBO mode



Image 5.2: Turbo Functionality

The Turbo function offers customizable rapid-fire settings for enhanced gameplay.

5.3. Screenshot Function

Press the **Capture** button (located near the HOME button) to take a screenshot of your current gameplay moment. Screenshots are saved to your connected device's gallery.

5.4. Motion Control (6-Axis Gyro)

The controller incorporates a precise 6-axis gyro motion sensor for realistic steering, sharp aiming, and smooth flight in compatible games. This technology ensures rapid response to movements, providing an immersive gaming experience.

6. BATTERY AND CHARGING

The controller is equipped with a 1000 mAh large-capacity rechargeable battery. It requires approximately 2-3 hours for a full charge and provides up to 10 hours of continuous gameplay.



8-10 Hours
Working Time



2-3 Hours
Charging Time



720 Hours
Standby Time

**Built-in 500mAh
Rechargeable
Battery**



**Ergonomic
Design**

Conform to palm structure
Even if you use it for a long time,
you won't feel tired

Image 6.1: Battery Life and Ergonomic Design

The controller features a long-lasting battery and an ergonomic design for comfortable extended use.

To charge the controller, connect the provided USB-C charging cable to the USB-C port on the controller and to a compatible USB power source. The LED indicators will show the charging status and turn off when fully charged.

7. MAINTENANCE

- Keep the controller clean by wiping it with a soft, dry cloth.
- Avoid exposing the controller to extreme temperatures, humidity, or direct sunlight.
- Do not disassemble the controller, as this may void the warranty and cause damage.
- Store the controller in a safe place when not in use to prevent accidental damage.

8. TROUBLESHOOTING

8.1. Controller Not Connecting

- Ensure the controller is fully charged.

- Verify that Bluetooth is enabled on your device (Nintendo Switch, PC, Android, iOS).
- Follow the pairing instructions carefully (Section 4.1 or 4.2).
- Try restarting both the controller and your device.
- If connecting to a Switch, ensure no other controllers are interfering with the connection.

8.2. Input Lag or Unresponsive Buttons

- Ensure the controller is within the effective range (up to 10 meters) of your device.
- Check for any physical obstructions or strong electromagnetic interference.
- Confirm the controller is fully charged.
- Update your device's software or drivers if applicable.

8.3. Vibration Not Working

- Check in-game settings to ensure vibration is enabled.
- Verify that the controller is fully charged.

9. SPECIFICATIONS

Feature	Detail
Model Number	B0DWSWH7LP
Connectivity	Wireless (Bluetooth)
Compatibility	Nintendo Switch, Switch 2, Switch Lite, Switch OLED, Windows PC, Android, iOS
Battery Capacity	1000 mAh
Charging Time	2-3 hours
Operating Time	Up to 10 hours
Wireless Range	Up to 10 meters
Vibration	Dual Motion Motors (4-level)
Motion Control	6-Axis Gyro Sensor
Turbo Function	3-level speeds (8, 15, 25 rounds/second)
Weight	1.19 pounds (approx. for 2 controllers)
Dimensions	6.85 x 5.55 x 4.88 inches (package dimensions)

10. WARRANTY AND SUPPORT

For warranty information and technical support, please refer to the contact details provided with your purchase or visit the official Nonbliep website. Keep your purchase receipt as proof of purchase.

