

Oclean Flowblackset

Oclean Flow Sonic Electric Toothbrush User Manual

Model: Flowblackset

1. INTRODUCTION

Thank you for choosing the Oclean Flow Sonic Electric Toothbrush. This manual provides detailed instructions for the safe and effective use, maintenance, and troubleshooting of your new toothbrush. Please read this manual thoroughly before first use and keep it for future reference.

2. SAFETY INFORMATION

To ensure safe operation and prevent injury or damage, please observe the following precautions:

- **Caution:** Do not use the toothbrush while sleeping.
- Avoid using the toothbrush with wet hands to prevent electrical hazards.
- Before disposing of the toothbrush, remove the brush head to prevent accidental swallowing by children.
- Keep the device out of reach of children.
- Do not disassemble, repair, or modify the device yourself. Contact authorized service personnel for repairs.
- Do not immerse the charging base in water or any other liquid.
- If you have any oral health concerns, consult your dentist before using this product.

3. WHAT'S IN THE BOX

Upon opening the package, verify that all components are present and in good condition:

- Oclean Flow Sonic Electric Toothbrush Handle
- 1 x Brush Head (DuPont bristles)
- USB-C Charging Cable
- User Manual



Image: The Oclean Flow Sonic Electric Toothbrush, including the handle, brush head, and its retail packaging, illustrating the product's design and contents.

4. PRODUCT OVERVIEW

Familiarize yourself with the main components of your Oclean Flow toothbrush:

- **Brush Head:** Features W-shaped DuPont bristles for effective cleaning and gum care.

- **Handle:** Ergonomically designed for comfortable grip, housing the motor and battery.
- **Power Button:** Used to turn the toothbrush on/off and switch brushing modes.
- **Mode Indicators:** LED lights indicating the selected brushing mode.
- **Charging Port:** USB-C port located at the bottom of the handle for charging.

5. SETUP

5.1 Initial Charging

Before first use, fully charge your Oclean Flow toothbrush. A full charge takes approximately 5 hours and provides up to 180 days of use.

1. Connect the USB-C charging cable to the charging port at the bottom of the toothbrush handle.
2. Plug the other end of the USB-C cable into a compatible USB power adapter (not included) or a computer's USB port.
3. The indicator lights on the handle will show the charging status. Once fully charged, the lights will indicate completion.

10 minutes de charge pour 2 semaines de brossage

Charge rapide USB-C



Image: The Oclean Flow toothbrush connected to a laptop via its USB-C charging cable, demonstrating the charging process. A graphic indicates "1 full charge = 180 days of cleaning."

5.2 Attaching the Brush Head

Align the brush head with the metal shaft on the toothbrush handle and push it down firmly until it clicks into place. Ensure it is securely attached before use.

6. OPERATING THE TOOTHBRUSH

6.1 Power On/Off

Press the power button once to turn the toothbrush on. Press and hold the power button for 2 seconds to turn it off.

6.2 Changing Brushing Modes

With the toothbrush turned on, press the power button repeatedly to cycle through the 5 available brushing modes. The corresponding LED indicator will light up for the selected mode.

- **Morning Mode:** For superior cleaning.
- **Night Mode:** For deep cleaning.
- **Cleaning Mode:** For daily cleaning.
- **Whitening Mode:** For a naturally whiter smile.
- **Gentle Mode:** Suitable for individuals with sensitive gums.

5 modes de brossage

Mode Matin

Mode Nuit

Mode Standard

Mode Blanchiment

Mode Doux



Image: A detailed view of the Oclean Flow toothbrush handle, highlighting the five distinct brushing modes: Morning, Night, Standard, Whitening, and Gentle, each with its corresponding icon.

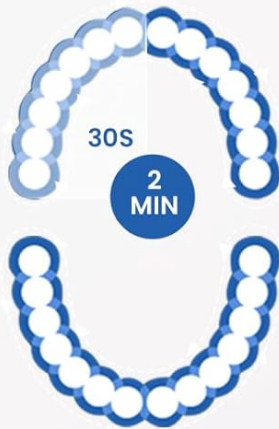
6.3 Brushing Technique and Smart Timer

The Oclean Flow features a 2-minute smart timer and a 30-second quadrant reminder to ensure thorough cleaning of all areas of your mouth.

1. Apply a small amount of toothpaste to the brush head.
2. Place the brush head against your teeth at a slight angle towards the gumline.
3. Turn on the toothbrush. Gently move the brush head across your teeth, covering all surfaces.

4. The toothbrush will pause briefly every 30 seconds to signal you to move to the next quadrant of your mouth.
5. After 2 minutes, the toothbrush will automatically turn off, indicating the completion of the recommended brushing time.

Smart Timer



2 mins
Minuterie intelligente



30s changer
la zone de nettoyage



Image: A user demonstrating brushing with the Oclean Flow toothbrush. Graphics illustrate the 2-minute smart timer and the 30-second quadrant reminder system, promoting effective oral hygiene.

Jusqu'à
76,000 mouvements/min

Nettoyage excellent et doux



Image: A close-up of the Oclean Flow brush head in action, with water droplets simulating its sonic vibrations. Text indicates "Up to 76,000 movements/min" for excellent and gentle cleaning.

7. MAINTENANCE

7.1 Cleaning the Toothbrush

The Oclean Flow toothbrush is IPX7 waterproof, allowing for easy cleaning.

- After each use, rinse the brush head and the handle under running water.
- Wipe the handle with a soft cloth to remove any toothpaste residue.
- Ensure the charging port is dry before charging.

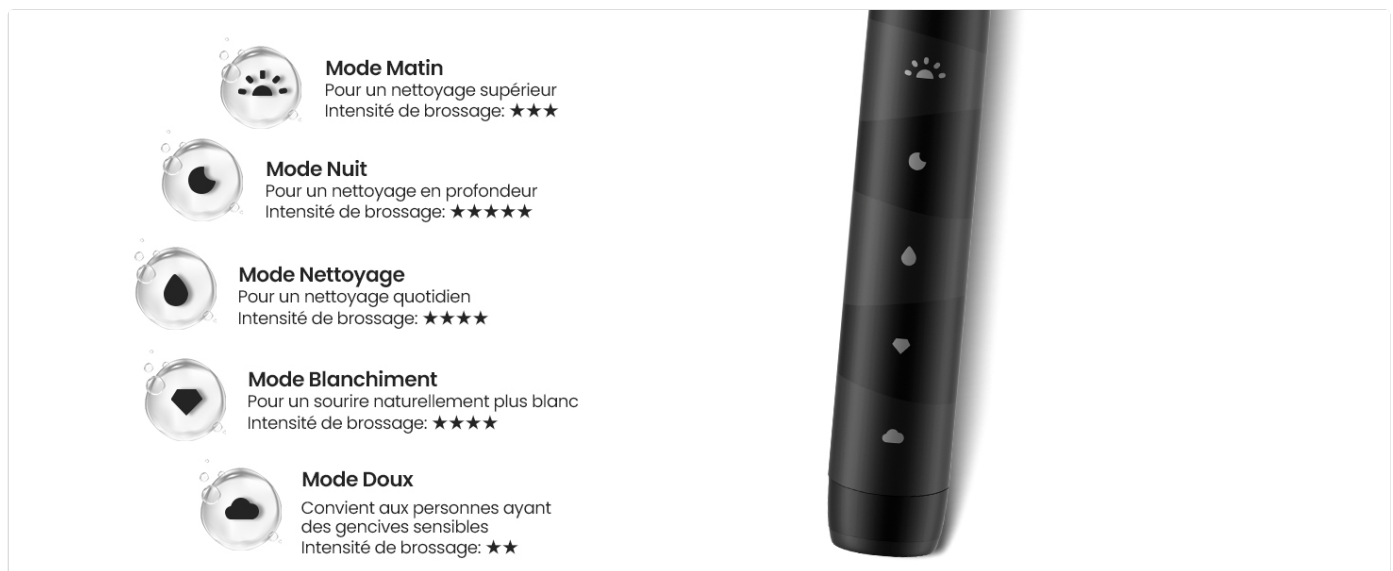


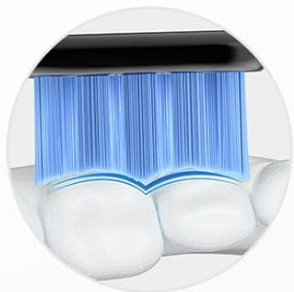
Image: The Oclean Flow toothbrush partially submerged in water, illustrating its IPX7 waterproof rating, which allows for easy cleaning under running water.

7.2 Brush Head Replacement

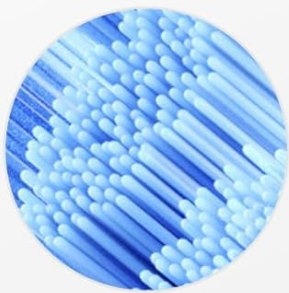
Dentists recommend replacing brush heads every 3 months, or sooner if the bristles become frayed or worn.

- To remove the brush head, pull it firmly away from the handle.
- To attach a new brush head, align it with the metal shaft and push until it clicks into place.

Protège les gencives et l'émail des dents



Forme en « W »,
s'adapte mieux
aux dents



Poils DuPont Tynex



Image: A close-up view of the Oclean Flow brush head, highlighting its W-shaped design for better tooth adaptation and the use of high-quality DuPont Tynex bristles, which protect gums and enamel.

8. TROUBLESHOOTING

If you encounter any issues with your Oclean Flow toothbrush, refer to the following common problems and solutions:

Problem	Possible Cause	Solution
Toothbrush does not turn on.	Battery is depleted.	Charge the toothbrush fully.
Vibrations are weak.	Low battery or loose brush head.	Charge the toothbrush. Ensure the brush head is securely attached.
Toothbrush stops during use.	2-minute timer completed or low battery.	This is normal if 2 minutes have passed. If not, charge the toothbrush.

Problem	Possible Cause	Solution
Brush head falls off during brushing.	Brush head not securely attached.	Re-attach the brush head firmly until it clicks into place.

If the problem persists after trying these solutions, please contact Oclean customer support for assistance.

9. SPECIFICATIONS

Feature	Detail
Model Number	Flowblackset
Brand	Oclean
Dimensions (L x W x H)	3 x 3 x 26 cm
Weight	120 grams
Battery Life	Up to 180 days (on 5 hours charge)
Brushing Modes	5 (Morning, Night, Cleaning, Whitening, Gentle)
Vibrations per Minute	Up to 76,000
Timer	2-minute smart timer with 30-second quadrant reminder
Waterproof Rating	IPX7
Power Source	Battery Powered (1 x 12V battery included)
Brush Head Material	DuPont Tynex bristles
Country of Origin	China





10. WARRANTY AND SUPPORT

Oclean products are manufactured to high-quality standards. For information regarding warranty coverage, returns, or technical support, please refer to the warranty card included with your product or visit the official Oclean website. Keep your purchase receipt as proof of purchase for warranty claims.

For further assistance, you may contact Oclean customer service through their official channels.



Related Documents

<div><h3>Oclicon X Lite Smart Sonic Electric Toothbrush</h3><p>Your Gateway to Smarter Brushing</p><p>Introducing the Oclicon X Lite Smart Sonic Electric Toothbrush, a revolutionary device that combines advanced sonic technology with smart features to enhance your oral hygiene routine. This smart toothbrush offers a comprehensive brushing experience, from deep cleaning to gentle massage, all controlled through a user-friendly app. The X Lite is designed for convenience, with a long battery life and a sleek, modern look. It's the perfect addition to your daily oral care regimen.</p><p>Cleaning Performance</p><table><tr><td>Brushing Mode</td><td>Smart Sonic</td></tr><tr><td>Brushing Head</td><td>3.0mm Sonic Bristles</td></tr><tr><td>Brushing Area</td><td>100% Coverage</td></tr><tr><td>Brushing Time</td><td>2-4 Min</td></tr><tr><td>Brushing Pressure</td><td>Low to High</td></tr><tr><td>Brushing Speed</td><td>10,000 Strokes/Min</td></tr></table><p>Charging and Battery Life</p><table><tr><td>Charging Time</td><td>2-4 Hours</td></tr><tr><td>Charging Port</td><td>USB-C</td></tr><tr><td>Charging Cable</td><td>1m</td></tr><tr><td>Charging Case</td><td>Yes</td></tr><tr><td>Charging Case Material</td><td>ABS Plastic</td></tr><tr><td>Charging Case Color</td><td>Black</td></tr><tr><td>Charging Case Size</td><td>100mm x 50mm x 20mm</td></tr><tr><td>Charging Case Weight</td><td>50g</td></tr></table><p>Design</p><table><tr><td>Color</td><td>Black</td></tr><tr><td>Material</td><td>ABS Plastic</td></tr><tr><td>Weight</td><td>50g</td></tr><tr><td>Dimensions</td><td>100mm x 50mm x 20mm</td></tr></table><p>Accessories</p><table><tr><td>Charging Case</td><td>Yes</td></tr><tr><td>Charging Cable</td><td>1m</td></tr><tr><td>Brushing Head</td><td>1</td></tr><tr><td>Brushing Head Material</td><td>3.0mm Sonic Bristles</td></tr><tr><td>Brushing Head Size</td><td>100mm x 50mm</td></tr><tr><td>Brushing Head Weight</td><td>50g</td></tr></table></div>	Brushing Mode	Smart Sonic	Brushing Head	3.0mm Sonic Bristles	Brushing Area	100% Coverage	Brushing Time	2-4 Min	Brushing Pressure	Low to High	Brushing Speed	10,000 Strokes/Min	Charging Time	2-4 Hours	Charging Port	USB-C	Charging Cable	1m	Charging Case	Yes	Charging Case Material	ABS Plastic	Charging Case Color	Black	Charging Case Size	100mm x 50mm x 20mm	Charging Case Weight	50g	Color	Black	Material	ABS Plastic	Weight	50g	Dimensions	100mm x 50mm x 20mm	Charging Case	Yes	Charging Cable	1m	Brushing Head	1	Brushing Head Material	3.0mm Sonic Bristles	Brushing Head Size	100mm x 50mm	Brushing Head Weight	50g	<p>Oclicon X Lite Smart Sonic Electric Toothbrush: Features and Specifications</p> <p>Detailed overview of the Oclicon X Lite Smart Sonic Electric Toothbrush, highlighting its advanced brushing feedback, multiple modes, long battery life, and technical specifications.</p>
Brushing Mode	Smart Sonic																																																
Brushing Head	3.0mm Sonic Bristles																																																
Brushing Area	100% Coverage																																																
Brushing Time	2-4 Min																																																
Brushing Pressure	Low to High																																																
Brushing Speed	10,000 Strokes/Min																																																
Charging Time	2-4 Hours																																																
Charging Port	USB-C																																																
Charging Cable	1m																																																
Charging Case	Yes																																																
Charging Case Material	ABS Plastic																																																
Charging Case Color	Black																																																
Charging Case Size	100mm x 50mm x 20mm																																																
Charging Case Weight	50g																																																
Color	Black																																																
Material	ABS Plastic																																																
Weight	50g																																																
Dimensions	100mm x 50mm x 20mm																																																
Charging Case	Yes																																																
Charging Cable	1m																																																
Brushing Head	1																																																
Brushing Head Material	3.0mm Sonic Bristles																																																
Brushing Head Size	100mm x 50mm																																																
Brushing Head Weight	50g																																																
<div><h3>Flow</h3><p>User Manual • Ultrasound manual • Ultrasound manual • Ultrasound manual</p></div>	<p>Oclicon Flow Sonic Electric Toothbrush User Manual</p> <p>Comprehensive user manual for the Oclicon Flow Sonic Electric Toothbrush, detailing features, usage instructions, safety precautions, and specifications. Learn about brushing modes, charging, maintenance, and warranty information.</p>																																																
<div><h3>X Ultra</h3><p>WiFi Smart Sonic Electric Toothbrush</p><p>Key Features:</p><ul style="list-style-type: none">• 3.0mm Sonic Bristles• 10,000 Strokes/Min• 2-4 Min Brushing Time• Low to High Brushing Pressure• Smart Sonic Technology• 100% Coverage• 100mm x 50mm x 20mm• 50g Weight• 1m Charging Cable• 1m Charging Case• 1m Charging Case Material• 1m Charging Case Color• 1m Charging Case Size• 1m Charging Case Weight</div>	<p>Oclicon X Ultra WiFi Smart Sonic Electric Toothbrush Advanced Oral Care</p> <p>Discover the Oclicon X Ultra, a WiFi-enabled smart sonic electric toothbrush featuring a Maglev 3.0 motor, AI brushing guidance, personalized reports, and multiple cleaning modes for superior oral hygiene.</p>																																																
<div><h3>X-Pro</h3><p>User Manual • Ultrasound manual • Ultrasound manual • Ultrasound manual</p></div>	<p>Oclicon X-Pro Smart Sonic Electric Toothbrush User Manual</p> <p>Comprehensive user manual for the Oclicon X-Pro Smart Sonic Electric Toothbrush, covering setup, usage, maintenance, safety instructions, and warranty information.</p>																																																