

## SOVMIKU CB2

# SOVMIKU Vicohome CB2 2K AI Tracking Security Camera User Manual

Model: CB2-5GHz

## 1. INTRODUCTION

Thank you for choosing the SOVMIKU Vicohome CB2 2K AI Tracking Security Camera. This manual provides essential information for setting up, operating, and maintaining your camera to ensure optimal performance and security. Please read this manual thoroughly before use and retain it for future reference.

## 2. PRODUCT OVERVIEW

The Vicohome CB2 is an advanced indoor security camera designed for comprehensive home monitoring. It features 2K resolution, AI auto-tracking, 360° pan/tilt capabilities, two-way audio, and enhanced night vision. It supports both 2.4GHz and 5GHz Wi-Fi for flexible connectivity.



Image: Front view of the SOVMIKU Vicohome CB2 camera.



Image: The Vicohome app interface displaying live feeds from multiple cameras simultaneously.

### 3. FEATURES

- **2K Resolution (3MP):** Captures clear and detailed video footage.
- **AI Auto Tracking:** Automatically detects and follows movement within its field of view.
- **360° View (Pan 355°, Tilt 90°):** Provides extensive coverage of your space.
- **Dual-Band Wi-Fi (2.4GHz/5GHz):** Offers flexible and stable wireless connectivity.
- **Two-Way Audio:** Allows for real-time communication through the camera.
- **Night Vision:** Equipped with infrared LEDs for clear black and white video in low-light conditions up to 32 feet.
- **Emergency SOS via One-Touch Call:** Enables immediate contact in emergencies.
- **Motion Detection & Audible Alarm:** Real-time motion alerts and an optional audible alarm.
- **Local & Cloud Storage:** Supports up to 128GB microSD card (not included) and optional encrypted cloud storage.
- **Privacy Mode:** Allows you to hide the camera lens when recording is not desired.
- **Multi-Device & Multi-User Support:** Connect up to 50 cameras and share access with up to 10 users via the Vicohome App.

## Dual-Band WiFi compatible



Image: The camera highlighting its dual-band Wi-Fi compatibility (2.4GHz and 5GHz).

## Local or Cloud? You're the Boss!

**Built-in microSD Slot, Support up to 128GB**

128GB = 15 months motion detection recordings

*\*microSD card not included*

**Prefer Encrypted cloud storage? We've got that too.**

Nobody can destroy your recordings, Even if the camera is destroyed



Image: Illustration of local storage via microSD card and encrypted cloud storage options.

## Emergency SOS via one-touch call

If you are concerned about elderly parents or young children who are unable to make phone calls in an emergency. The CB2 camera allows them to contact you immediately with just one click.



Image: Demonstrates the one-touch SOS call feature on the CB2 camera.



## Motion Tracking

When motion is detected. The device will automatically track the movement.

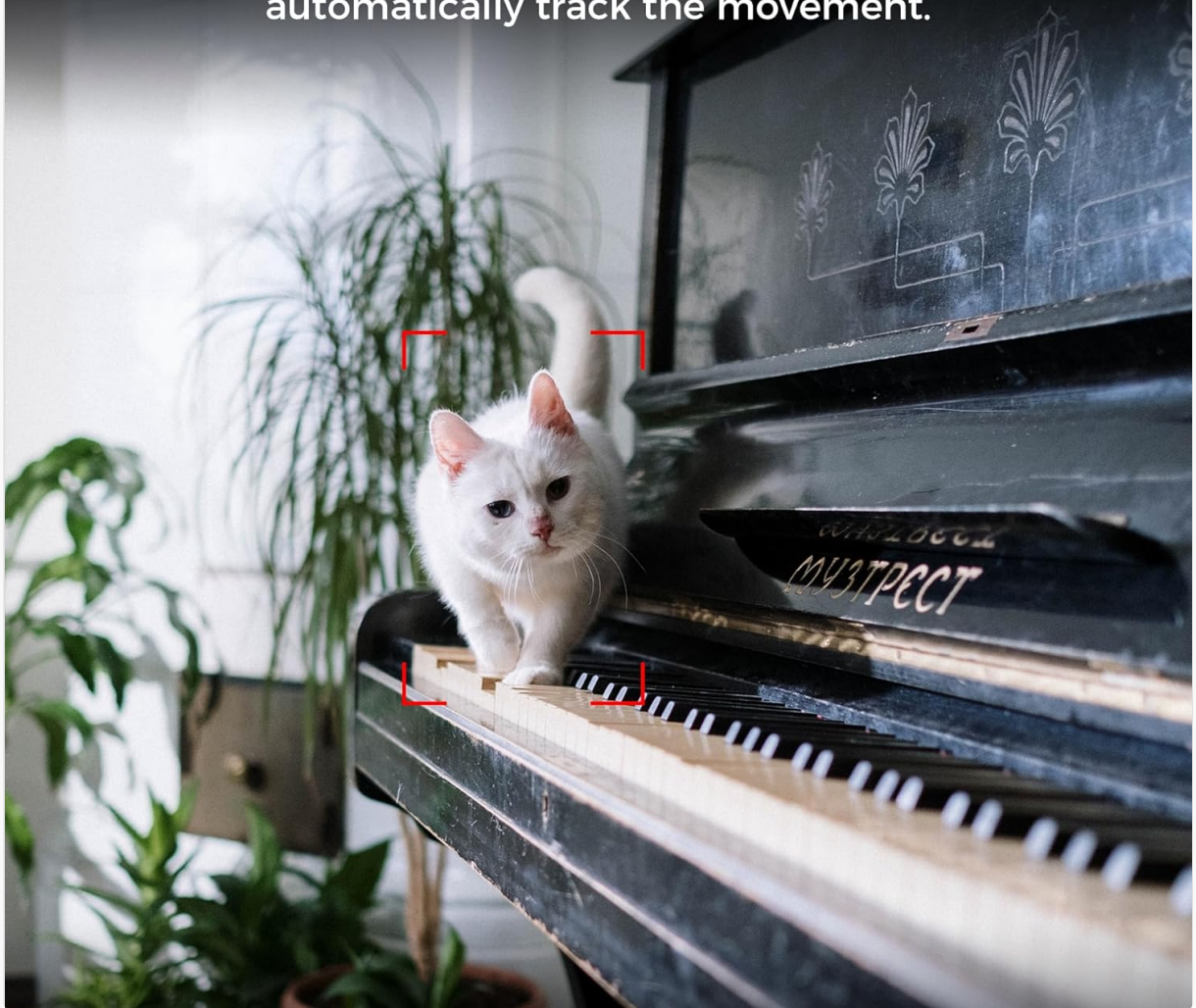


Image: The camera's motion tracking feature in action, following a cat.

## Privacy Mode

You can hide it, when you don't need it to record



Image: The camera demonstrating its privacy mode, where the lens can be hidden.





Image: Illustrates the two-way audio function, allowing communication between the camera and a smartphone.

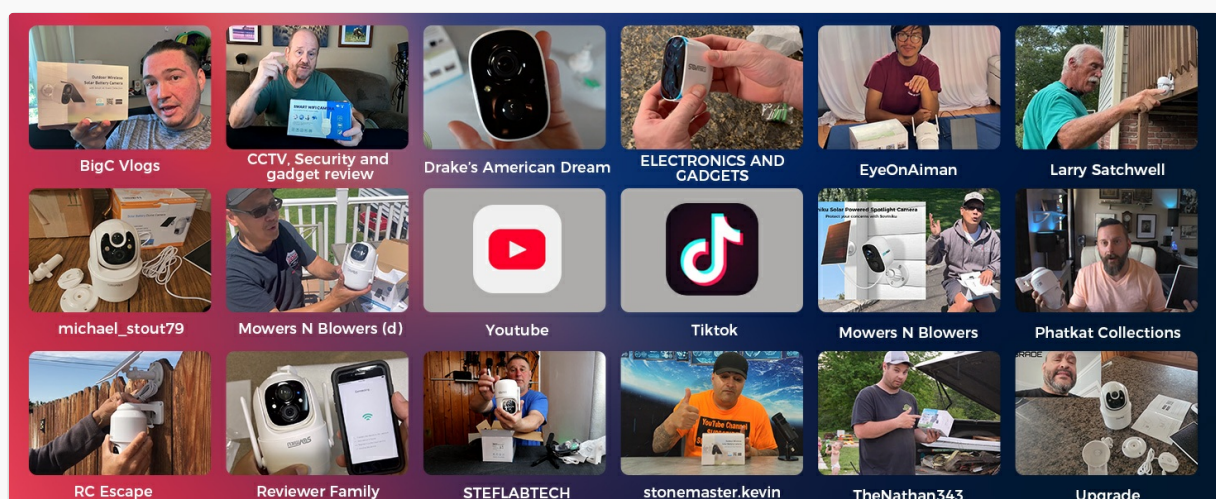


Image: A smartphone displaying the camera's night vision feed, showing a baby in a crib.

## 4. WHAT'S IN THE BOX

- SOVMIKU Vicohome CB2 Security Camera
- Instruction Manual



- Mounting Accessories
- Power Adapter and Type-C Cable

## 5. SETUP

1. **Download the App:** Download the free "Vicohome" App from Google Play Store or Apple App Store.
2. **Power On:** Connect the camera to a power source using the provided Type-C cable and power adapter. The camera will power on automatically.
3. **Add Device:** Open the Vicohome App, create an account or log in, and follow the in-app instructions to add your CB2 camera. Ensure your smartphone is connected to a 2.4GHz or 5GHz Wi-Fi network during setup.
4. **Mounting:** The camera can be placed on a desktop or mounted on a wall or ceiling. The redesigned bracket structure allows for easy pre-installation of the mount, after which the camera simply clips into place.



Image: Various mounting options for the CB2 camera: desktop, ceiling, and wall.

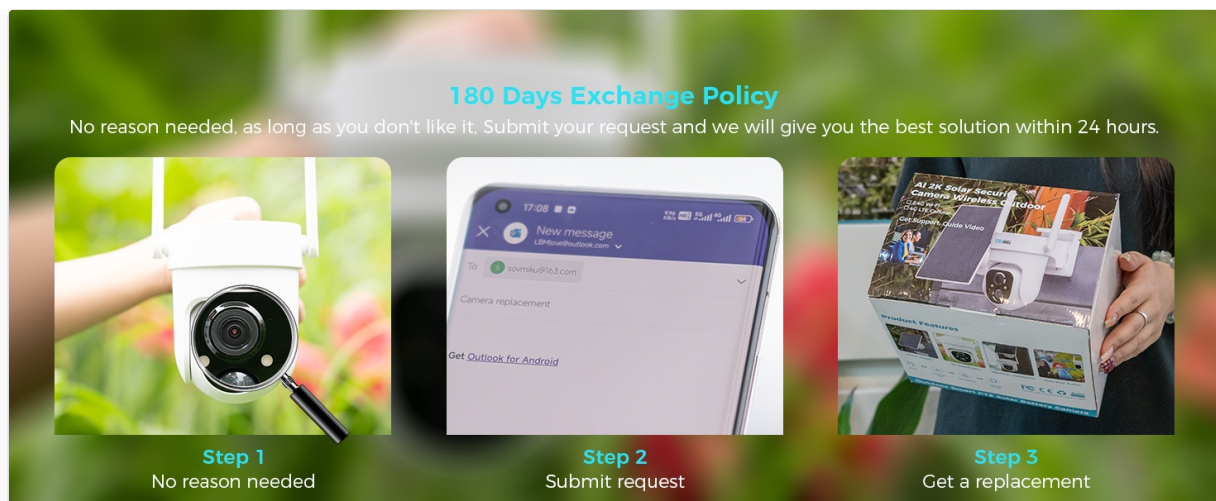


Image: Close-up of the camera being attached to its wall mount.

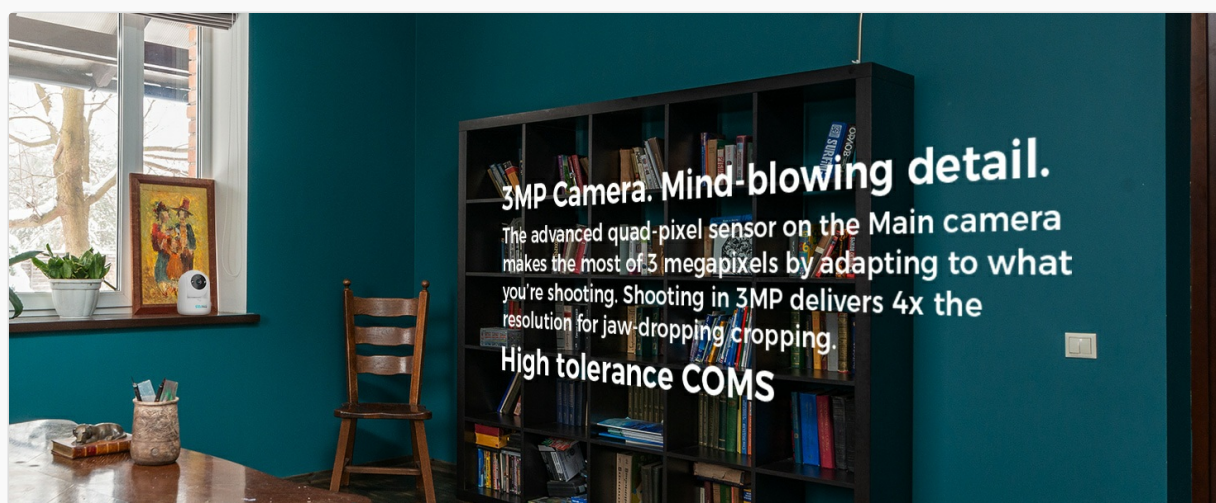


Image: The camera connected via its Type-C charging cable, ensuring continuous operation.

## 6. OPERATING INSTRUCTIONS

- **Live View:** Access the live feed from your camera anytime, anywhere via the Vicohome App.
- **Pan/Tilt Control:** Use the controls within the app to remotely adjust the camera's viewing angle (355° pan, 90° tilt). You can also set up to 5 frequently used positions for quick access.
- **Two-Way Audio:** Tap the microphone icon in the app to speak through the camera, and listen to audio from the camera's surroundings.
- **Motion Detection & Tracking:** The camera will automatically detect motion and track the subject. You will receive mobile notifications. Adjust sensitivity and detection preferences in the app settings.
- **Audible Alarm:** If enabled, the camera will sound an alarm when motion is detected.
- **SOS Call:** In an emergency, a person near the camera can press the SOS button on the camera to immediately contact you through the app.
- **Privacy Mode:** Activate this feature in the app to physically hide the camera lens, ensuring privacy when needed.
- **Recording & Playback:** Recordings are stored on the microSD card or cloud. Access and playback recorded footage through the app.





Image: The camera's 360° view capability and the app interface for control.



Image: Setting and accessing frequently used camera positions via the app.

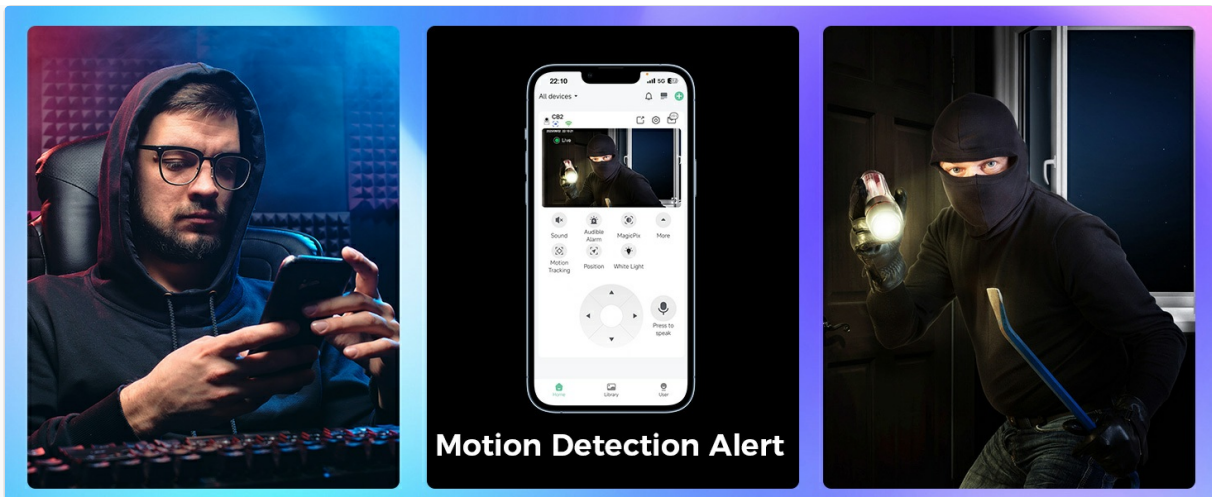


Image: Demonstrates the motion detection alert system, notifying users of activity.

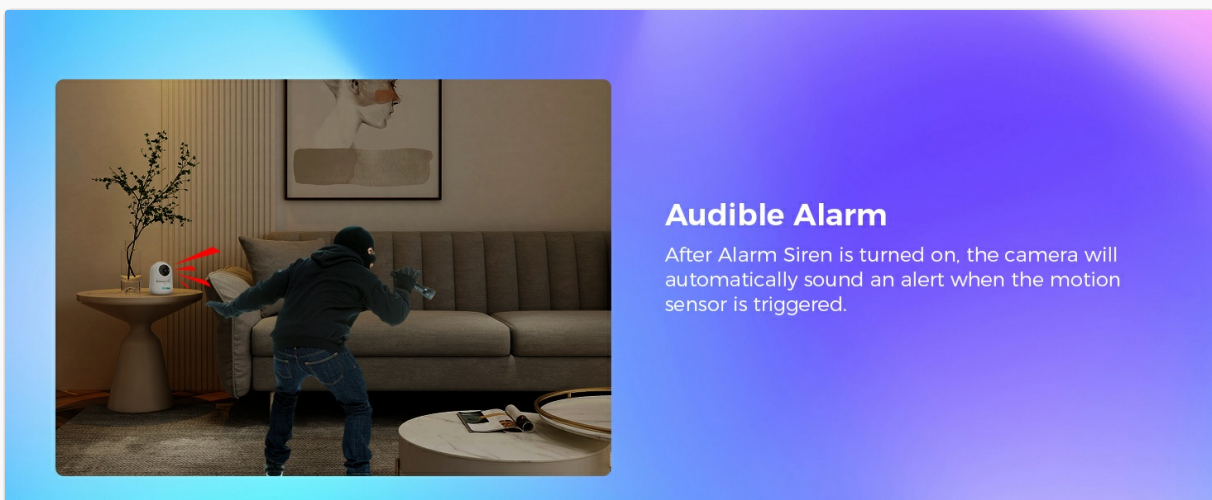


Image: The camera's audible alarm feature activating upon motion detection.

Video: Demonstration of the Vicohome CB2 camera's AI auto-tracking and human tracking capabilities.

## 7. MAINTENANCE

- **Cleaning:** Use a soft, dry cloth to clean the camera lens and body. Avoid harsh chemicals or abrasive materials.
- **Firmware Updates:** Regularly check the Vicohome App for available firmware updates to ensure optimal performance and security.
- **MicroSD Card:** If using a microSD card, ensure it is properly formatted within the app when first inserted. Periodically check its status and consider backing up important recordings.

## 8. TROUBLESHOOTING

Issue	Possible Cause / Solution
Camera frequently loses connection.	<p>Weak Wi-Fi signal: Ensure camera is within Wi-Fi range.</p> <p>Network congestion: Try restarting your router.</p> <p>Camera reset: If persistent, try resetting the camera and reconnecting via the app.</p>



Issue	Possible Cause / Solution
Cannot bypass cloud storage payment screen.	Ensure you are using the official "Vicohome" app. The camera supports local storage via microSD card without subscription. If prompted for subscription, look for options to proceed without it or contact customer support.
MicroSD card needs formatting.	Format the microSD card directly through the camera settings within the Vicohome App.
Two-way audio has static/poor quality.	Interference: Move camera away from other electronic devices. Network issue: Ensure stable Wi-Fi connection. Restart: Try restarting the camera.
Motion detection is not working or too sensitive.	Adjust detection sensitivity and detection preferences (e.g., human-only detection) in the Vicohome App settings. Ensure the camera's view is clear of obstructions.

## 9. SPECIFICATIONS

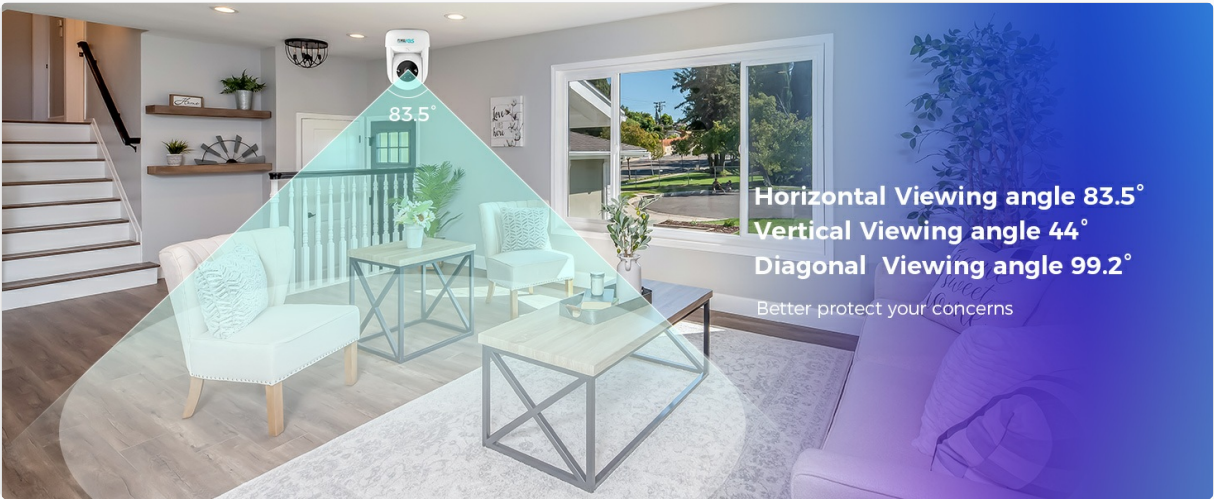


Image: Detailed technical specifications of the camera.

Specification	Detail
Model Name	CB2
Resolution	3 Megapixels (2304 x 1296)
Field of View	99.2°(D)/83.5°(H)/44°(V)
Connectivity	Wi-Fi (2.4GHz & 5GHz)
Power Source	Corded Electric (Type-C Port)
Night Vision Range	32 Feet
Audio	Two-Way Audio
Storage Support	Micro SD Card Up to 128GB
Operating Conditions	-4°F ~ 122°F

Specification	Detail
Dimensions (L x W x H)	3.14 x 2.5 x 2.5 inches
Item Weight	10.8 ounces (0.22 LB)
Material	PVC
Waterproof Grade	Not Waterproof



**Wall & Ceiling Indoor / Outdoor  
Metal Mount**

**Easy to install / Install in one minute**

After collecting suggestions from 6520 customers, we redesigned the bracket structure and redesigned the original integrated body mechanism. Separate the mount of the camera so that we can pre install the mount to the designated location, and then simply clip the camera into the mount.

Image: Visual representation of the camera's dimensions and weight.





**Two-way Audio**

No matter how far away, you can easily talk through the camera.



Image: Certifications for the product, including CE, FCC, RoHS, WEEE, MSDS, and UN38.3.

## 10. WARRANTY AND SUPPORT

SOVMIKU is committed to providing excellent customer service. We offer a**180-day exchange policy**. If you are not satisfied with your product, you can submit a request, and we will provide a solution within 24 hours.

For any inquiries or support, please contact us via telephone or email. We aim to reply to all emails within 12 hours. Your feedback is valuable and helps us improve our products and services.



Image: Overview of the 180-day exchange policy process.



Image: SOVMIKU's commitment to user privacy and data protection.

## Documents - SOVMIKU – CB2



### [VicoHome Battery Camera Setup Guide](#)

A comprehensive guide to setting up your VicoHome battery-powered camera, covering initial setup, Wi-Fi connection, troubleshooting, and reset procedures.

lang:en score:22 filesize: 464.15 K page\_count: 9 document date: 2023-05-24