

Ourlife RXE123

Ourlife Sports Action Camera User Manual

Brand: Ourlife | Model: RXE123

1. PRODUCT OVERVIEW

The Ourlife Sports Action Camera is designed to capture clear and detailed images with 1080P HD video recording and 5MP photography. It is suitable for various activities, from outdoor sports to everyday moments, delivering vibrant and dynamic visuals. Its robust design, including a waterproof casing and wide-angle lens, makes it an ideal companion for adventurers.

Key Features:

- **HD 1080P Video & 5MP Photography:** Capture high-resolution videos and crisp still images.
- **Waterproof Design:** Designed for extreme sports, allowing use while surfing, swimming, or diving.
- **140° Ultra-Wide-Angle Lens:** Captures a broader field of view for immersive footage.
- **Long-Lasting 400mAh Battery:** Supports extended shooting time.
- **2-Inch HD LCD Screen:** Provides a clear view for framing shots and playback.
- **User-Friendly Interface:** Easy to operate for all users.



Figure 1.1: The Ourlife Sports Action Camera enclosed in its waterproof housing, ready for underwater use. The camera features an HD 1080P display and is designed for capturing dynamic visuals in various environments.

2. WHAT'S IN THE BOX

Please check the contents of your package to ensure all items are present:

- Ourlife Sports Action Camera
- Waterproof Housing
- Handle Bar/Pole Mount
- Clip 1
- Mount 1
- Mount 2
- Mount 3
- Mount 4

- Bandages
- Rechargeable Battery (400mAh)
- Battery Charger
- User Manual (this document)
- Pry Bar

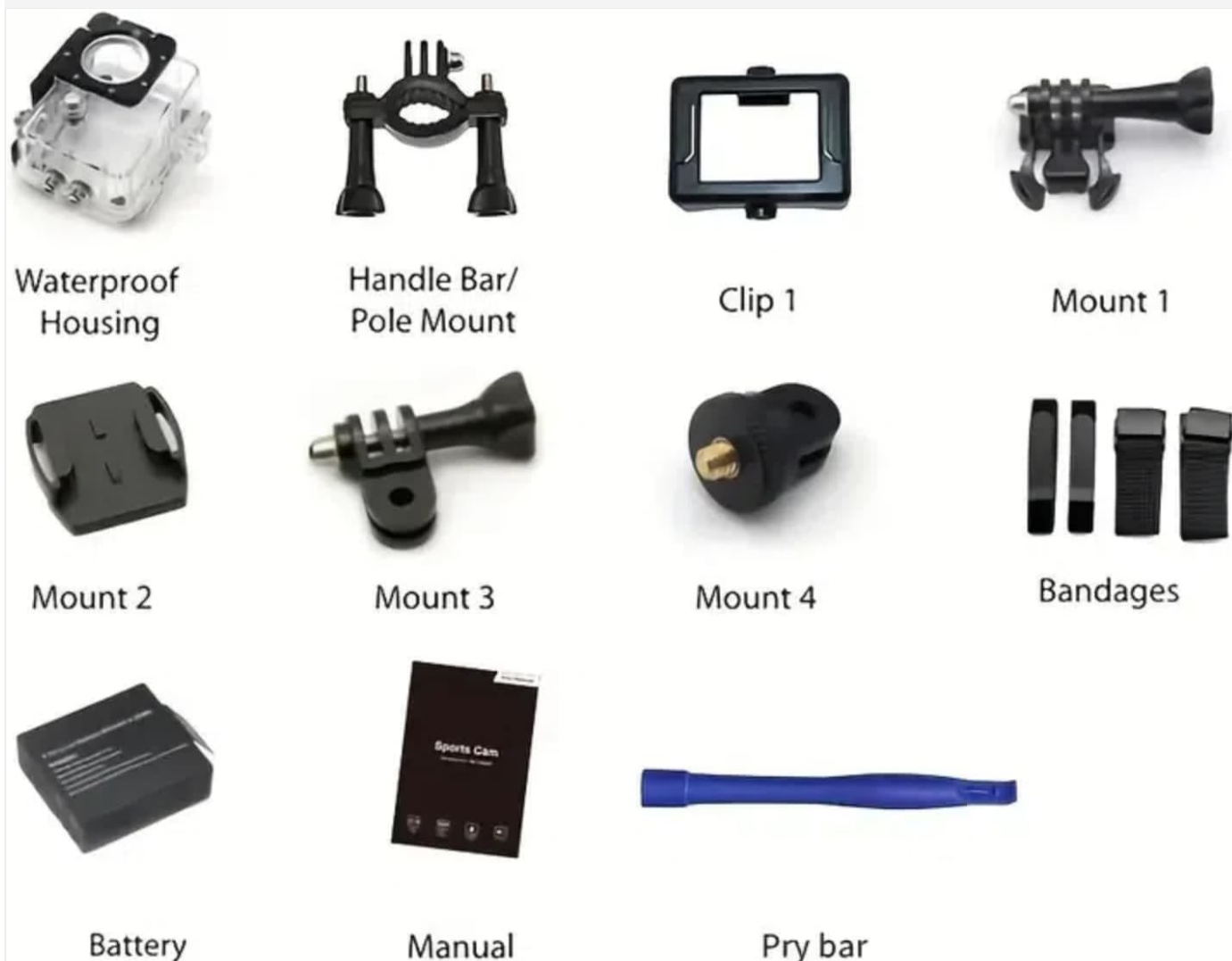


Figure 2.1: All included accessories and components for the Ourlife Sports Action Camera. This includes various mounts, the waterproof housing, battery, charger, and other essential items.

3. SETUP GUIDE

3.1 Charging the Battery

1. Insert the provided 400mAh rechargeable battery into the battery charger.
2. Connect the battery charger to a power source using a compatible USB cable (not included) and adapter.
3. The indicator light on the charger will show the charging status. Once fully charged, disconnect the charger.

3.2 Inserting the Battery and Memory Card

1. Open the battery compartment cover on the camera.
2. Insert the charged battery, ensuring the correct polarity.
3. Locate the TF (microSD) card slot. Insert a compatible memory card (Class 10 or higher, up to 32GB recommended) until it clicks into place.

4. Close the battery compartment cover securely.

3.3 Attaching the Waterproof Housing and Mounts

1. To use the camera underwater or in harsh environments, place it inside the waterproof housing. Ensure the housing is clean and free of debris, and the seal is properly seated.
2. Close the housing latch firmly to create a watertight seal.
3. Attach the desired mount (e.g., Handle Bar/Pole Mount, Clip, or other mounts) to the waterproof housing or directly to the camera if not using the housing, depending on your activity.
4. Secure the mount using the provided screws or clips.



Figure 3.1: The camera in its waterproof housing, demonstrating its capability to be submerged up to 98 feet (approximately 30 meters). This housing protects the camera during water-based activities.

4. OPERATING INSTRUCTIONS

4.1 Powering On/Off

- **To Power On:** Press and hold the Power/Mode button (usually located on the front or top of the camera) for a few seconds until the screen lights up.
- **To Power Off:** Press and hold the Power/Mode button again until the screen turns off.

4.2 Navigating the 2-Inch LCD Screen

The 2-inch HD LCD screen allows you to preview your shots, review footage, and navigate settings. Use the Power/Mode button to cycle through modes (Video, Photo, Playback, Settings) and the Up/Down buttons (if available) or Shutter button to select options within menus.

4.3 Recording Videos and Taking Photos

- **Video Mode:** Once powered on, the camera typically defaults to video recording mode. Press the Shutter/OK button (usually on top) to start recording. Press it again to stop.
- **Photo Mode:** Press the Power/Mode button repeatedly until the camera enters photo mode. Press the Shutter/OK button to take a picture.
- **Playback Mode:** Switch to playback mode to review your recorded videos and photos on the LCD screen.

4.4 Using the 140° Wide-Angle Lens

The 140° wide-angle lens is automatically engaged, providing a broad field of view. This is ideal for capturing expansive landscapes, group shots, or immersive action footage where you want to include more of the surroundings.

Action Camera

Record and share your life moments with family and friends anywhere.

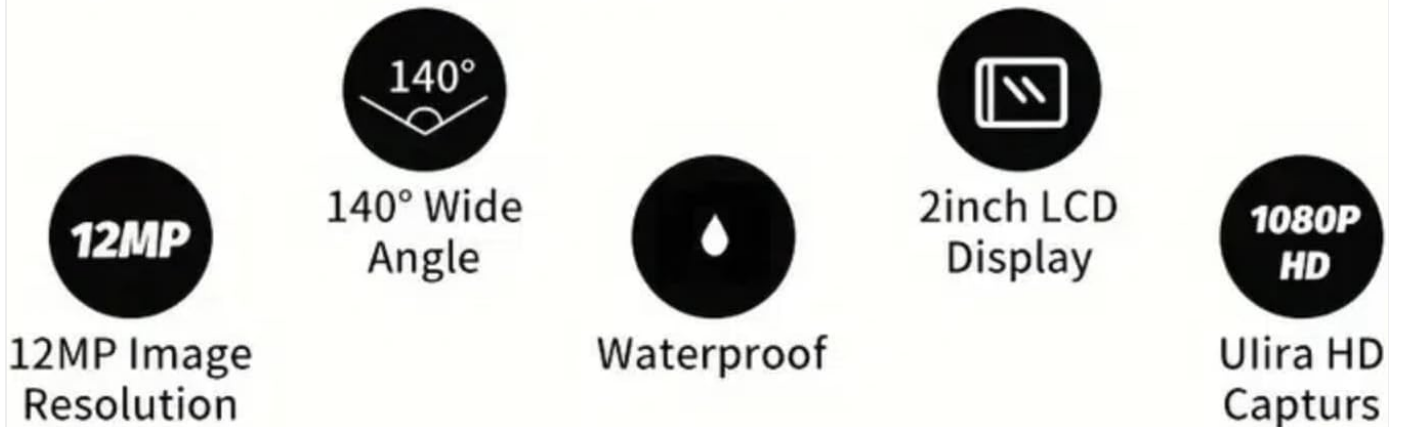


Figure 4.1: Visual representation of the Ourlife Sports Action Camera highlighting its key features: 12MP image resolution, 140° wide-angle lens, waterproof capability, 2-inch LCD display, and 1080P Ultra HD video capture.

5. MAINTENANCE

5.1 Cleaning the Camera and Housing

- Use a soft, lint-free cloth to clean the camera body and LCD screen. For stubborn smudges, slightly dampen the cloth with water.
- For the lens, use a specialized lens cleaning cloth and solution to avoid scratches.
- After using the waterproof housing in saltwater, rinse it thoroughly with fresh water and let it air dry. Ensure no salt residue remains on the seals.

5.2 Battery Care

- Fully charge the battery before first use.
- Avoid completely draining the battery regularly to prolong its lifespan.
- If storing the camera for an extended period, charge the battery to about 50% and remove it from the camera.

5.3 Storage

Store the camera and its accessories in a cool, dry place, away from direct sunlight and extreme temperatures. Keep it in its original packaging or a protective case to prevent damage.

6. TROUBLESHOOTING

Problem	Possible Cause	Solution
Camera does not power on.	Battery is dead or not inserted correctly.	Charge the battery fully. Ensure the battery is inserted with correct polarity.
Cannot record video or take photos.	Memory card is full, corrupted, or not inserted.	Insert a compatible memory card. Format the memory card (this will erase all data). Delete unnecessary files.
Poor video/photo quality.	Lens is dirty. Insufficient lighting. Incorrect settings.	Clean the lens. Ensure adequate lighting. Check camera settings for resolution and exposure.
Water leakage into housing.	Housing not properly sealed. Debris on seal. Damaged seal.	Ensure housing latch is firmly closed. Check for and remove any debris on the rubber seal. Inspect the seal for cracks or damage; replace if necessary.

7. SPECIFICATIONS

Brand	Ourlife
Model Number	RXE123
Video Capture Resolution	1080p HD
Photo Resolution	5 Megapixels (MP)
Screen Size	2-inch LCD
Wide-Angle Field of View	140°
Battery Capacity	400mAh
Flash Memory Type	TF (microSD)
Video Capture Format	AVI
Photo Sensor Technology	CCD
Maximum Focal Length	30

Minimum Focal Length	28
Maximum Aperture	2.8 f



Figure 7.1: Physical dimensions of the Ourlife Sports Action Camera, showing its compact size for portability and ease of use.

8. WARRANTY AND SUPPORT

For warranty information, technical support, or service inquiries, please contact Ourlife customer support. Details can typically be found on the product packaging or the official Ourlife website. Please retain your proof of purchase for any warranty claims.



