

DOOGEE Tab E3+

DOOGEE Tab E3+ Android 15 Tablet User Manual

Model: DOOGEE Tab E3+

1. PRODUCT OVERVIEW

The DOOGEE Tab E3+ is a high-performance Android 15 tablet designed for versatile use, from entertainment to productivity. It features a 12-inch FHD+ display, an octa-core processor, ample storage, and a long-lasting battery.

Key Features:

- **12-inch FHD+ IPS Display:** 2000x1200 resolution with 90Hz refresh rate for vibrant visuals and smooth scrolling.
- **Helio G100 Octa-Core Processor:** 2.2GHz, 6nm process for efficient multitasking and gaming.
- **32GB RAM (8GB + 24GB expandable) + 256GB ROM:** Expandable up to 2TB via TF card.
- **8800mAh Battery:** Up to 14 hours of video playback with 18W fast charging.
- **13MP Rear Camera + 5MP Front Camera:** For capturing photos and video calls.
- **Dual SIM Connectivity:** Supports LTE, Dual-band WiFi (2.4GHz/5GHz), and Bluetooth 5.2.
- **Android 15 with Gemini AI:** Latest operating system with intelligent features.
- **Face Unlock & GPS:** Secure access and accurate navigation.



Figure 1.1: Front view of the DOOGEE Tab E3+ Tablet highlighting its key features like Android 15, 32GB RAM, 256GB ROM, and MediaTek G100 processor.

2. GETTING STARTED: SETUP

2.1. Package Contents

Before you begin, ensure all items are present in the package:

- DOOGEE Tab E3+ Tablet
- USB Type-C Cable
- Power Adapter
- SIM Ejector Tool (if applicable for Dual SIM models)
- Quick Start Guide

2.2. Charging the Tablet

For optimal performance, fully charge the tablet before first use.

1. Connect the USB Type-C cable to the tablet's charging port.

2. Connect the other end of the cable to the power adapter.
3. Plug the power adapter into a wall outlet.
4. The charging indicator will appear on the screen.

The tablet supports 18W fast charging.

2.3. Powering On/Off

- **To Power On:** Press and hold the Power button until the DOOGEE logo appears.
- **To Power Off:** Press and hold the Power button, then select "Power off" from the options on the screen.
- **To Restart:** Press and hold the Power button, then select "Restart" from the options.

2.4. Initial Setup Wizard

Upon first power-on, the tablet will guide you through the initial setup process:

1. Select your preferred language.
2. Connect to a Wi-Fi network.
3. Sign in with your Google account or create a new one.
4. Set up screen lock (PIN, Pattern, Password, or Face Unlock).
5. Review and accept terms and conditions.

3. OPERATING THE TABLET

3.1. Display and Navigation

The 12-inch FHD+ IPS display offers a 2000x1200 resolution and a 90Hz refresh rate for smooth visuals.

12" FHD+ IPS Display with 90Hz Refresh Rate

Enchanting visual experience



2000*1200
Resolution



5:3
Aspect Ratio



87.1%
Screen-to-Body Ratio



16.7 Million
Screen Color



Figure 3.1: The tablet's 12-inch FHD+ IPS display, highlighting its 2000x1200 resolution, 5:3 aspect ratio, 87.1% screen-to-body ratio, and 16.7 million screen colors, along with the 90Hz refresh rate.

- **Touch Gestures:** Tap, swipe, pinch-to-zoom for navigation and interaction.
- **Home Screen:** Customize with widgets and app shortcuts.
- **Notification Panel:** Swipe down from the top to access notifications and quick settings.

3.2. Storage and Performance

The tablet comes with 256GB of internal storage and 8GB of RAM, expandable by an additional 24GB (total 32GB) through virtual RAM. Storage can be expanded up to 2TB using a TF (microSD) card.

8GB RAM+256GB ROM

Massive Storage

Never delete apps or photos again



32GB Max RAM

8GB Basic + 24GB Extended RAM



256GB ROM

Basic Storage



2TB

Expandable memory

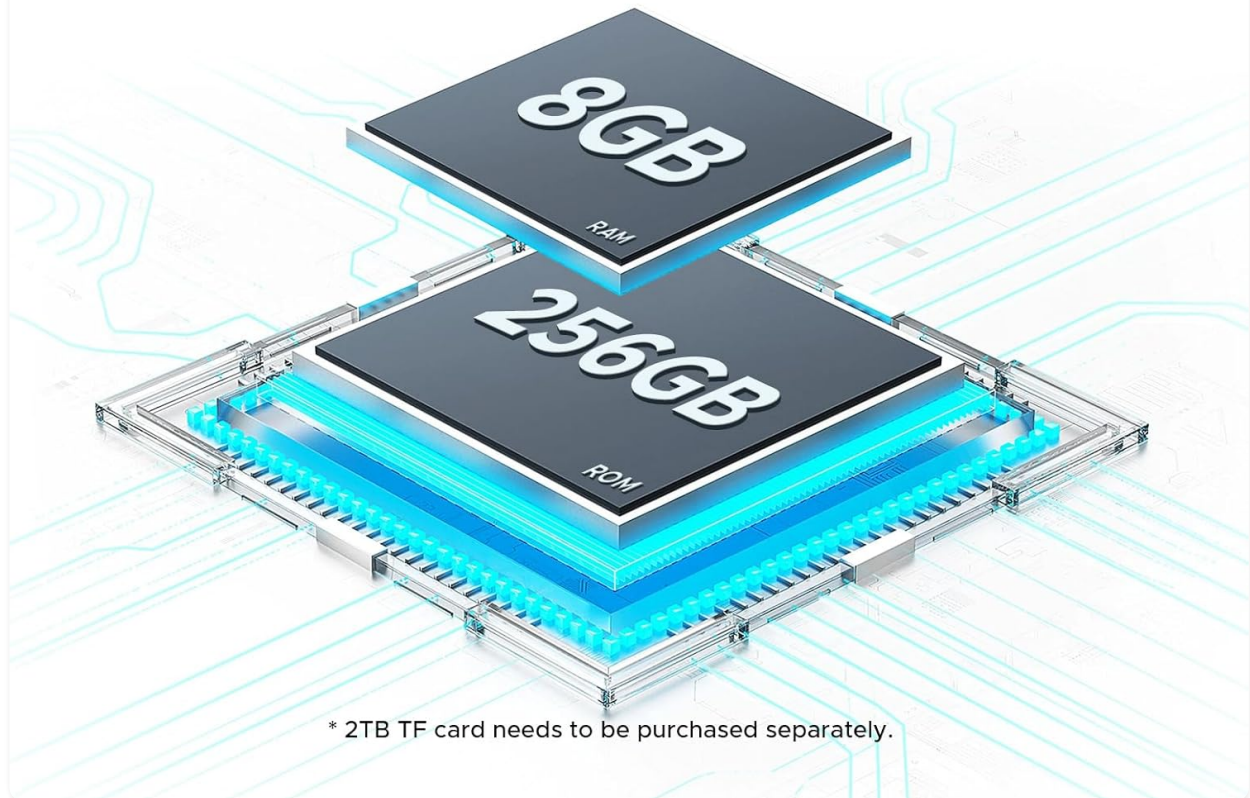


Figure 3.2: Visual representation of the tablet's 32GB Max RAM (8GB Basic + 24GB Extended RAM) and 256GB ROM, with an indication of 2TB expandable memory.

The Helio G100 octa-core processor ensures smooth operation for various tasks.

Helio G100 Octa-Core Processor

Experience Blazing-Fast Performance



2.2GHz
Ultimate Frequency



6nm
Advanced Process Technology



Figure 3.3: Diagram illustrating the Helio G100 Octa-Core Processor, highlighting its 2.2GHz ultimate frequency and 6nm advanced process technology.

3.3. Connectivity

- **Wi-Fi:** Connect to 2.4GHz or 5GHz networks for internet access.
- **Bluetooth 5.2:** Pair with wireless headphones, speakers, or other Bluetooth devices.
- **Dual SIM (LTE):** Insert two Nano-SIM cards for mobile data and calls (if supported by your region/model).
- **OTG (On-The-Go):** Connect USB peripherals like flash drives, keyboards, or mice. Also supports reverse charging.
- **GPS:** Utilize for navigation and location-based services.

3.4. Camera Functionality

The tablet is equipped with a 13MP main rear camera and a 5MP front camera.

Capture the Lively Moments



Figure 3.4: Close-up view of the tablet's rear camera module, indicating the 13MP main camera and 5MP front camera, along with example photos taken with the cameras.

- Open the Camera app from the home screen or app drawer.
- Switch between front and rear cameras using the camera icon.
- Tap the shutter button to take photos or record videos.

3.5. Audio and Multimedia

Experience immersive audio with high-quality quad speakers. A 3.5mm audio jack is also available for wired headphones.

3.6. Android 15 and Gemini AI

The tablet runs on the latest Android 15 operating system, offering enhanced privacy controls, AI optimization, and smart motion sensing.

The Android 15 System

Intelligent, Seamless, Secure

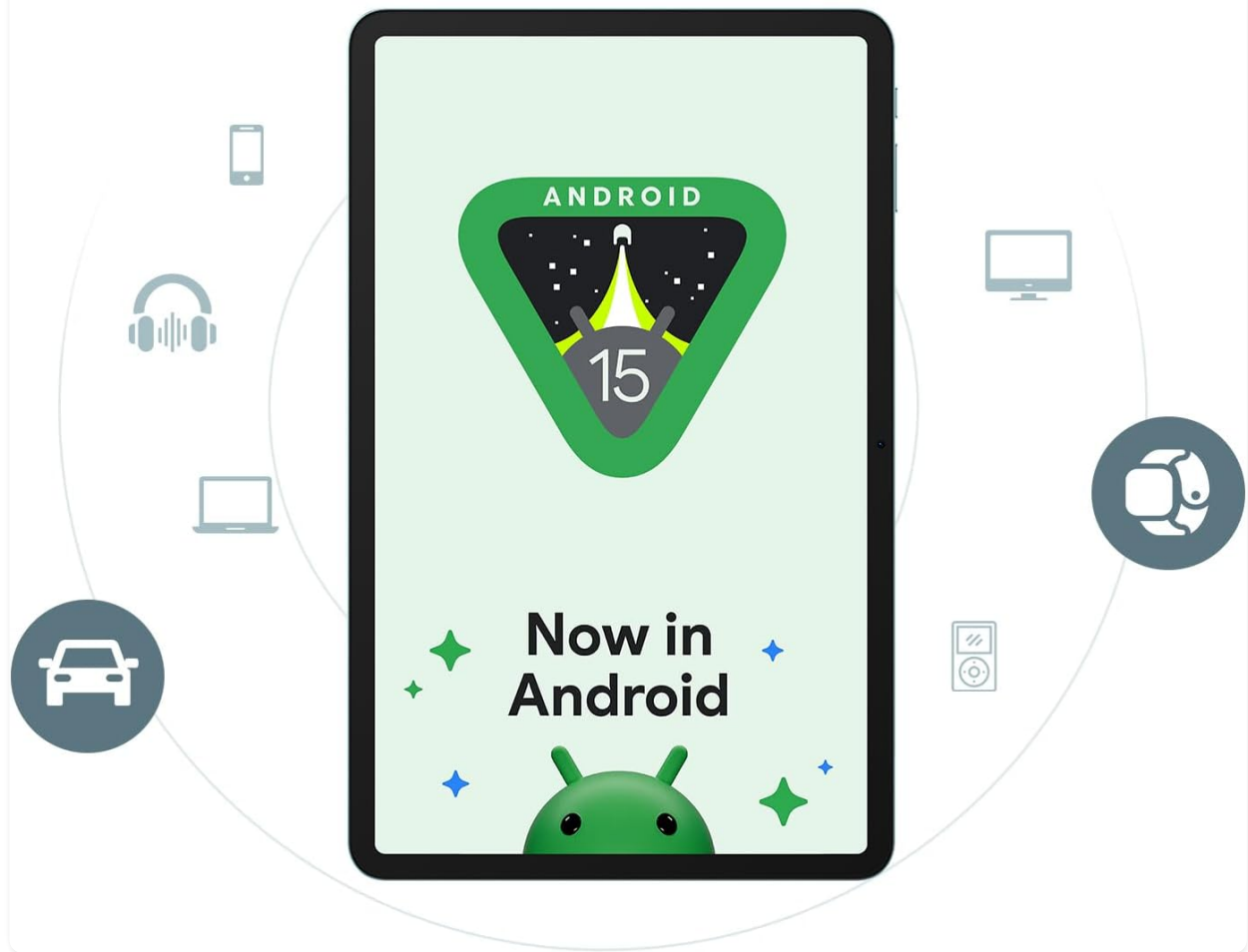


Figure 3.5: Representation of the Android 15 system interface on the tablet, emphasizing its intelligent, seamless, and secure nature.

The integrated Gemini AI assistant helps streamline daily tasks and offers features like content creation, information retrieval, image analysis, and more.

Built-in Gemini AI

Your all-in-one intelligent companion

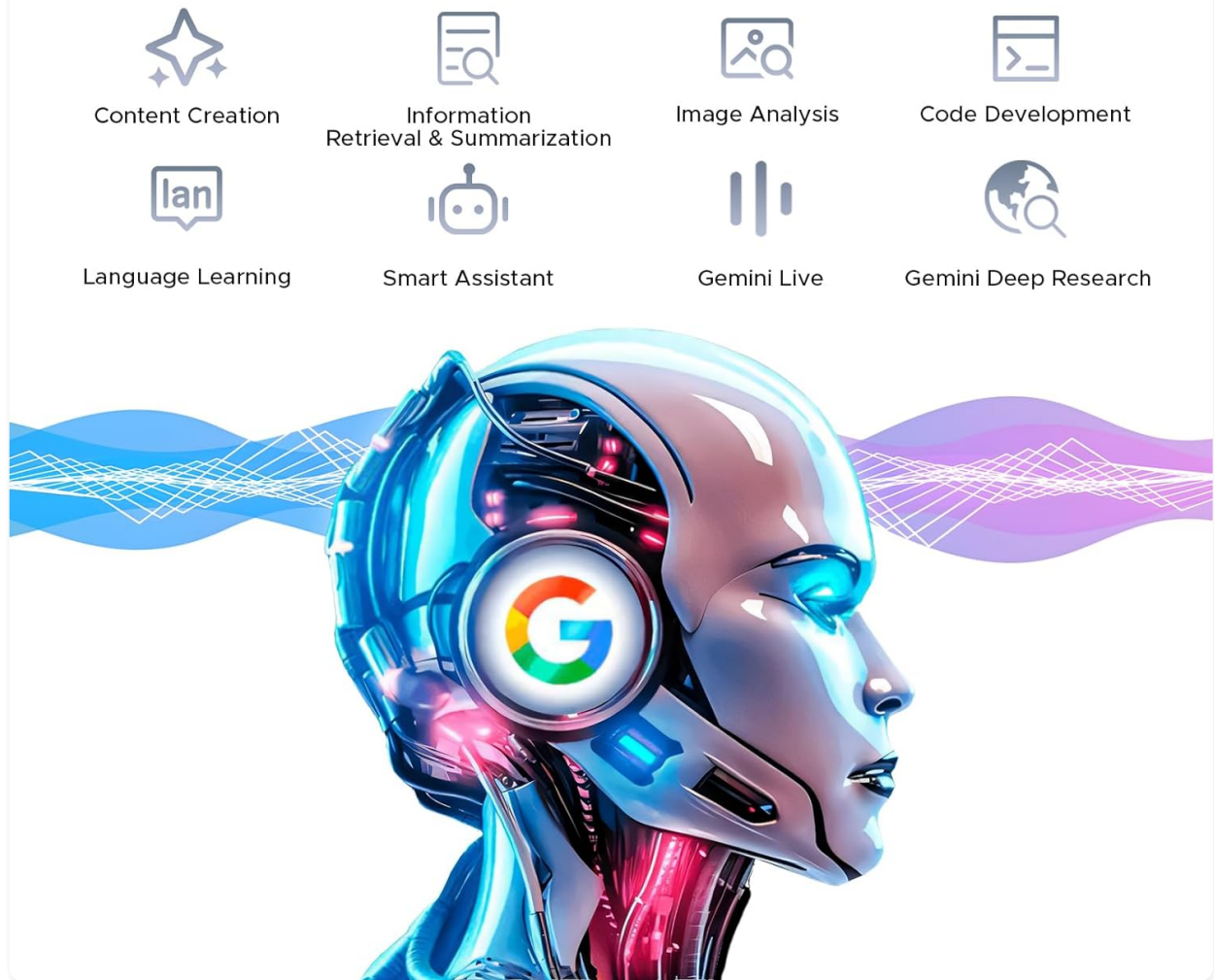


Figure 3.6: Illustration of the built-in Gemini AI, showcasing its capabilities such as content creation, information retrieval & summarization, image analysis, code development, language learning, smart assistant, Gemini Live, and Gemini Deep Research.

4. MAINTENANCE AND CARE

- **Cleaning:** Use a soft, lint-free cloth to clean the screen and body. Avoid abrasive cleaners or solvents.
- **Battery Care:** Avoid extreme temperatures. For long-term storage, charge the battery to about 50%.
- **Software Updates:** Regularly check for and install system updates to ensure optimal performance and security. Go to *Settings > System > System update*
- **Storage Management:** Periodically clear unnecessary files and apps to free up storage space.
- **Protection:** Consider using a screen protector and a protective case to prevent physical damage.

5. TROUBLESHOOTING

Problem	Possible Solution
Tablet does not power on	Ensure the battery is charged. Connect to charger for at least 30 minutes. Try holding the Power button for 10-15 seconds.
Slow performance / Lagging	Close background apps. Clear cache. Restart the tablet. Check for system updates. Ensure sufficient storage space.
Wi-Fi connection issues	Restart the tablet and router. Forget and reconnect to the Wi-Fi network. Check router settings.
Apps crashing or freezing	Clear app cache/data (<i>Settings > Apps > [App Name] > Storage</i>). Reinstall the app. Ensure the app is updated.
Battery drains quickly	Reduce screen brightness. Disable unused features (Bluetooth, GPS, Wi-Fi). Close background apps. Check battery usage in settings.

6. SPECIFICATIONS

Feature	Detail
Model Name	DOOGEE Tab E3+
Operating System	Android 15
Processor	MediaTek Helio G100 Octa-Core (2.2GHz, 6nm)
Display	12-inch FHD+ IPS (2000x1200), 90Hz Refresh Rate
RAM	32GB (8GB physical + 24GB extended)
Internal Storage	256GB UFS
Expandable Storage	Up to 2TB via TF card (microSD)
Rear Camera	13MP
Front Camera	5MP

Feature	Detail
Battery	8800mAh
Charging	18W Fast Charging
Connectivity	Dual-band Wi-Fi (2.4GHz/5GHz), Bluetooth 5.2, Dual SIM (LTE), GPS, OTG
Ports	USB Type-C, 3.5mm Audio Jack
Dimensions	7.4mm Ultra-Thin Body

7. WARRANTY AND SUPPORT

For warranty information and technical support, please refer to the official DOOGEE website or contact their customer service. Keep your purchase receipt as proof of purchase.

DOOGEE Official Website: www.doogee.cc

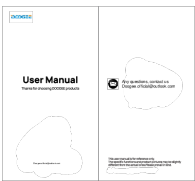

Amazon Seller: Aweihao





For product-related inquiries or issues, it is recommended to first contact the seller through Amazon's messaging system.

© 2024 DOOGEE. All rights reserved.

This manual is for informational purposes only. Specifications are subject to change without notice.

Related Documents - Tab E3+

	<p>DOOGEE Tablet User Manual</p> <p>User manual for the DOOGEE tablet, covering setup, messaging, language settings, safety, and maintenance.</p>
	<p>DOOGEE Tab G6 FCC RF Test Report - Bluetooth Compliance</p> <p>Comprehensive FCC RF test report for the DOOGEE Tab G6 tablet, detailing Bluetooth compliance testing according to FCC CFR Title 47 Part 15C. Includes conducted and radiated emission measurements, test setup, procedures, and results.</p>

	<p>DOOGEE U10 Series Tablet User Manual and Safety Guide</p> <p>Comprehensive user manual for the DOOGEE U10 Series tablet, covering essential operations, safety guidelines, maintenance tips, and FCC compliance information. Learn how to set up your device, send messages, manage settings, and ensure safe usage.</p>
	<p>DOOGEE S61 / S61 PRO Rugged Industrial Smartphone - Technical Specifications</p> <p>Explore the detailed technical specifications of the DOOGEE S61 and S61 PRO rugged industrial smartphones. Learn about their Helio G35 processor, 6.0" IPS HD+ display, advanced camera systems (including SONY IMX350), 5180mAh battery, and robust IP68/IP69K/MIL-STD-810H durability.</p>
	<p>DOOGEE U10 Series Tablet User Manual and Safety Guide</p> <p>Comprehensive user manual for the DOOGEE U10 Series tablet, covering device overview, TF card insertion, booting, SMS/MMS, language settings, SAR information, safety guidelines, and maintenance tips to ensure safe and effective use.</p>
	<p>DOOGEE TABE3MAX User Manual</p> <p>Comprehensive user manual for the DOOGEE TABE3MAX tablet, covering setup, basic operations, safety precautions, maintenance, and technical specifications.</p>