

ICERIVER ALEO AE0

ICERIVER ALEO AE0 Miner User Manual

MODEL: ALEO AE0

1. Introduction

The ICERIVER ALEO AE0 Miner is a specialized hardware device engineered for efficient mining of the zkSNARK algorithm. This unit delivers a maximum hashrate of 60 MH/s with a power consumption of 100W. This manual provides essential information for the safe installation, configuration, and operation of your ALEO AE0 Miner, ensuring optimal performance and longevity.

2. Safety Information

- Always operate the miner in a well-ventilated environment to prevent overheating and ensure stable performance.
- Ensure the provided Power Supply Unit (PSU) is correctly connected and that the electrical outlet meets the device's power requirements.
- Avoid exposing the device to moisture, dust, direct sunlight, or extreme temperatures.
- Do not attempt to open, disassemble, or modify the device. Doing so may void the warranty and pose significant safety risks, including electrical shock.
- Keep the device out of reach of children and pets.

3. Package Contents

Verify that all items are present in your package:

- ICERIVER ALEO AE0 Miner Unit
- Original Power Supply Unit (PSU)
- Power Cable (region-specific)
- User Manual (this document)

4. Product Overview

The ICERIVER ALEO AE0 Miner features a compact design with an integrated heat sink for efficient cooling. Key components and ports are illustrated below:



Figure 4.1: ICERIVER ALEO AE0 Miner, top-down view, showcasing the heat sink fins for thermal management.

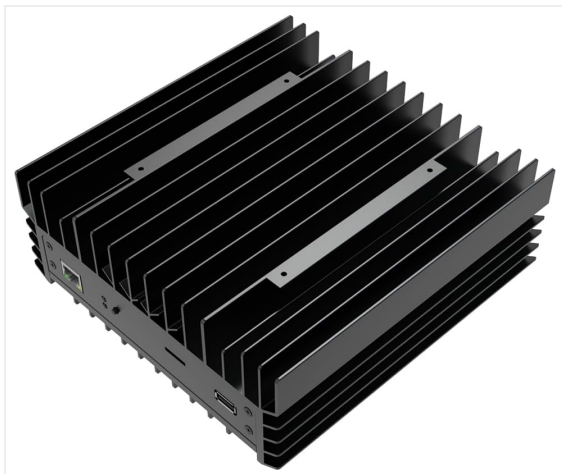


Figure 4.2: Side view of the ICERIVER ALEO AE0 Miner, highlighting the Ethernet port for network connectivity and a USB port.



Figure 4.3: Rear view of the ICERIVER ALEO AE0 Miner, showing the power input, status indicator lights, and additional ports.



Figure 4.4: Angled view of the ICERIVER ALEO AE0 Miner, showcasing its compact form factor and robust cooling fins.

The miner typically includes an Ethernet port for network connection, one or more USB ports for potential peripheral use or firmware updates, and a dedicated power input port. Status indicator lights provide visual feedback on the device's operational state.

5. Setup

Follow these steps to set up your ICERIVER ALEO AE0 Miner:

1. **Unpack:** Carefully remove the miner and all accessories from the packaging.
2. **Placement:** Position the miner on a stable, flat, and non-conductive surface in a well-ventilated area. Ensure there is adequate space around the unit for airflow.
3. **Network Connection:** Connect one end of an Ethernet cable to the miner's Ethernet port and the other end to your network router or switch.
4. **Power Connection:** Connect the original Power Supply Unit (PSU) to the miner's power input port. Then, plug the power cable into the PSU and a grounded electrical outlet.
5. **Power On:** The miner will typically power on automatically upon connecting to electricity. Observe the status indicator lights for initial boot sequence.
6. **Initialization:** Allow the device a few minutes to initialize and connect to your network.

6. Operating Instructions

Once the miner is set up and powered on, follow these steps to begin mining:

1. **Access Web Interface:** Open a web browser on a computer connected to the same network as the miner. Enter the miner's IP address into the browser's address bar. You can usually find the IP address through your router's administration page or by using an IP scanning tool.
2. **Login:** Enter the default username and password. Refer to the manufacturer's documentation or the device label for default credentials. It is recommended to change these credentials after initial setup for security.
3. **Configure Mining Settings:** Navigate to the mining configuration section. Input your chosen mining pool URL, your cryptocurrency wallet address, and a worker name (if required by your pool).
4. **Save and Restart:** Save the configured settings. The miner may require a restart for the new settings to take effect.
5. **Monitor Performance:** Use the miner's web interface to monitor its operational status, hashrate, temperature, and fan speed. Ensure the hashrate is stable and consistent with the expected performance.

7. Maintenance

Regular maintenance helps ensure the longevity and optimal performance of your miner:

- **Cleaning:** Periodically clean the exterior of the miner, especially the heat sink fins, to prevent dust accumulation. Use compressed air to gently remove dust from hard-to-reach areas. Ensure the miner is powered off and unplugged before cleaning.
- **Firmware Updates:** Check the official ICERIVER website regularly for firmware updates. Installing the latest firmware can improve performance, enhance security, and resolve potential issues. Follow the manufacturer's instructions carefully when performing updates.
- **Cable Inspection:** Periodically inspect all power and network cables for any signs of wear or damage. Ensure all connections are secure.

8. Troubleshooting

Refer to this section for common issues and their solutions:

- **No Power:**
 - Verify that the power cable is securely connected to both the PSU and the electrical outlet.
 - Ensure the electrical outlet is functional.
 - Check the PSU for any indicator lights or signs of failure.
- **No Network Connection:**
 - Confirm the Ethernet cable is properly connected to both the miner and the router/switch.
 - Check your router's status and ensure it is functioning correctly.
 - Verify the miner's network settings via its web interface (if accessible).
- **Low Hashrate:**
 - Ensure the miner is in a well-ventilated area and not overheating.
 - Clean any dust buildup on the heat sinks.
 - Verify your mining pool configuration and wallet address are correct.
 - Consider updating the miner's firmware.
- **Miner Not Detected on Network:**
 - Use an IP scanning tool to locate the device on your network.
 - Check your router's DHCP client list for connected devices.
 - If possible, perform a network settings reset on the miner (refer to specific device instructions).

9. Specifications

Product Dimensions	7.64 x 2.91 x 7.87 inches (L x W x H)
Item Weight	4.4 pounds (approximately 2 Kilograms)
Manufacturer	ICERIVER
Model Name	ALEO AE0 MINER
Algorithm	zkSNARK
Maximum Hashrate	60 MH/s

Power Consumption	100 Watts
Cooling Method	Air Cooling
Connector Type	Floppy (Note: This may refer to an internal or specific connector type)
Compatible Devices	Monitor (Note: This typically refers to display output capability)

10. Warranty and Support

The ICERIVER ALEO AE0 Miner is covered by a manufacturer's warranty. For detailed information regarding warranty terms, conditions, and duration, please refer to the warranty card included with your purchase or visit the official ICERIVER website.

For technical assistance, troubleshooting, or to initiate a warranty claim, please contact ICERIVER customer support through their official channels. Ensure you have your product model and purchase information readily available.

Important Note: Due to the specialized nature of cryptocurrency mining hardware, return policies may differ from standard consumer electronics. Please review your purchase agreement and the seller's return policy for specific details regarding returns and potential restocking fees.