



[Manuals.plus](#) /

> [Armitron](#) /

> Armitron Sport Digital Chronograph Watch Model 40/8509RBK Instruction Manual

## Armitron 40/8509RBK

# Armitron Sport Digital Chronograph Watch Model 40/8509RBK Instruction Manual

## INTRODUCTION

---

This manual provides detailed instructions for the setup, operation, maintenance, and troubleshooting of your Armitron Sport Men's Digital Chronograph Silicone Strap Watch, Model 40/8509RBK. Please read this guide thoroughly to ensure proper use and to maximize the lifespan of your watch.

## PRODUCT OVERVIEW

---

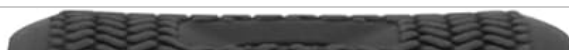
The Armitron Sport Digital Chronograph Watch features a durable red resin case with a metallic black top ring, a clear LCD display, and a comfortable black silicone strap. It is designed for active lifestyles with multiple functions including a chronograph, lap time, alarm, dual time, military time, and a backlight for low-light conditions. The watch is water resistant to 330 feet (100 meters).



**Figure 1:** Front view of the Armitron Sport Digital Chronograph Watch, Model 40/8509RBK, showcasing the digital display and red/black case design.



**Figure 2:** Side view of the watch, highlighting the 'ADJ' (Adjust) and 'EL' (Electroluminescent backlight) buttons on the left side of the case.





**Figure 3:** Back view of the watch, showing the stainless steel case back and the buckle closure of the black silicone strap.

## SETUP

---

### Setting Time and Date

1. Press and hold the **ADJ** button (usually top-left) until the seconds begin to flash. This indicates you are in setting mode.
2. Press the **MODE** button (usually bottom-left) to cycle through the settings: seconds, hour, minute, year, month, day.
3. Use the **START/STOP** button (usually top-right) or **RESET** button (usually bottom-right) to adjust the flashing value.
4. Once all settings are correct, press the **ADJ** button again to exit setting mode.

### 12/24 Hour Format

While in time setting mode (seconds flashing), press the **START/STOP** button when the hour is flashing to toggle between 12-hour (A/P indicator) and 24-hour (H indicator) formats.

## OPERATING INSTRUCTIONS

---

### Mode Selection

Press the **MODE** button to cycle through the different functions: Time, Chronograph (Stopwatch), Alarm, and Dual Time.

### Chronograph (Stopwatch)

1. From Time mode, press **MODE** until "CHRO" or "STW" appears.
2. Press **START/STOP** to begin timing.
3. Press **START/STOP** again to pause/resume timing.
4. Press **RESET** to clear the stopwatch to zero.

### Lap Time

While the chronograph is running, press the **RESET** button to record a lap time. The chronograph will continue to run in the background. Press **RESET** again to return to the running chronograph display.

### Alarm Function

1. From Time mode, press **MODE** until "ALM" appears.
2. Press and hold **ADJ** until the alarm hour flashes.
3. Use **MODE** to select hour or minute, and **START/STOP** to adjust the value.
4. Press **ADJ** to confirm and exit.
5. To activate/deactivate the alarm, press **START/STOP** while in Alarm mode. An alarm icon will appear when active.

### Dual Time

The Dual Time function allows you to set and display a second time zone.

1. From Time mode, press **MODE** until "DT" or "DUAL" appears.

2. Press and hold **ADJ** until the hour flashes.
3. Use **MODE** to select hour or minute, and **START/STOP** to adjust the value.
4. Press **ADJ** to confirm and exit.

### Military Time (24-Hour Format)

As described in the Setting Time and Date section, the watch supports a 24-hour display format, often referred to as military time. This can be toggled during time setting.

### Backlight

Press the **EL** button (usually bottom-left) to illuminate the display for a few seconds in low-light conditions.

### Water Resistance

This watch is water resistant to 330 feet (100 meters). This means it is suitable for showering, swimming, and snorkeling. **Do not press any buttons while the watch is submerged in water**, as this can compromise the water resistance seal.

## MAINTENANCE

---

### Cleaning

Wipe the watch regularly with a soft, dry cloth. For stubborn dirt, a slightly damp cloth can be used. Avoid harsh chemicals or abrasive materials that could damage the case or strap.

### Battery Replacement

When the display becomes dim or functions become erratic, the battery may need replacement. It is recommended to have the battery replaced by a qualified watch technician to ensure the water resistance seal is properly maintained.

### Water Resistance Care

After exposure to saltwater, rinse the watch with fresh water and dry it thoroughly. Avoid exposing the watch to extreme temperature changes, which can affect the water resistance gaskets.

## TROUBLESHOOTING

---

- **Display is blank or dim:** The battery may be low or depleted. Replace the battery.
- **Buttons are unresponsive:** Ensure the watch is not in a locked mode (if applicable, refer to specific model features). If the issue persists, a battery replacement might be needed, or there could be an internal malfunction.
- **Time is inaccurate:** Re-set the time and ensure the watch is not exposed to strong magnetic fields. If inaccuracy continues, the watch module may require service.
- **Condensation under crystal:** This indicates a breach in the water resistance. Avoid further water exposure and seek professional service immediately to prevent damage to internal components.

For issues not covered here, please contact Armitron customer support.

## SPECIFICATIONS

---

Feature	Detail
---------	--------

Model Number	40/8509RBK
Display Type	Digital
Watch Movement Type	Quartz
Case Material	Resin
Case Diameter	50 Millimeters
Case Thickness	15 Millimeters
Band Material	Silicone
Band Color	Black
Band Width	24 Millimeters
Band Length	9 Inches
Clasp Type	Buckle
Crystal Material	Acrylic
Water Resistance Depth	330 Feet (100 Meters)
Functions	Chronograph, Lap Time, Alarm, Dual Time, Military Time, Backlight, Day/Date
UPC	086702745708

## WARRANTY INFORMATION

Your Armitron Sport Digital Chronograph Watch is covered by a Limited Warranty. For specific details regarding the terms, conditions, and duration of your warranty, please refer to the warranty card included with your purchase or visit the official Armitron website. Keep your proof of purchase for warranty claims.

## SUPPORT

For further assistance, technical support, or to inquire about service, please visit the official Armitron website or contact their customer service department. You can often find FAQs and additional resources online.

Official Armitron Website: [www.armitron.com](http://www.armitron.com)