

innioasis G3

innioasis G3 MP3 Player User Manual

Model: G3

INTRODUCTION

This manual provides comprehensive instructions for the operation and maintenance of your innioasis G3 MP3 Player. Please read this manual thoroughly before using the device to ensure proper functionality and to maximize your user experience.



Image: Front and back view of the innioasis G3 MP3 Player. The front displays a vibrant touch screen with various application icons, while the back shows the device's sleek gray finish and branding.

WHAT'S IN THE BOX

Verify that all items are present in the package:

- MP3 Player x 1

- 128GB SD card x 1
- USB-C cable x 1
- Wired headphones x 1
- User manual x 1

SETUP GUIDE

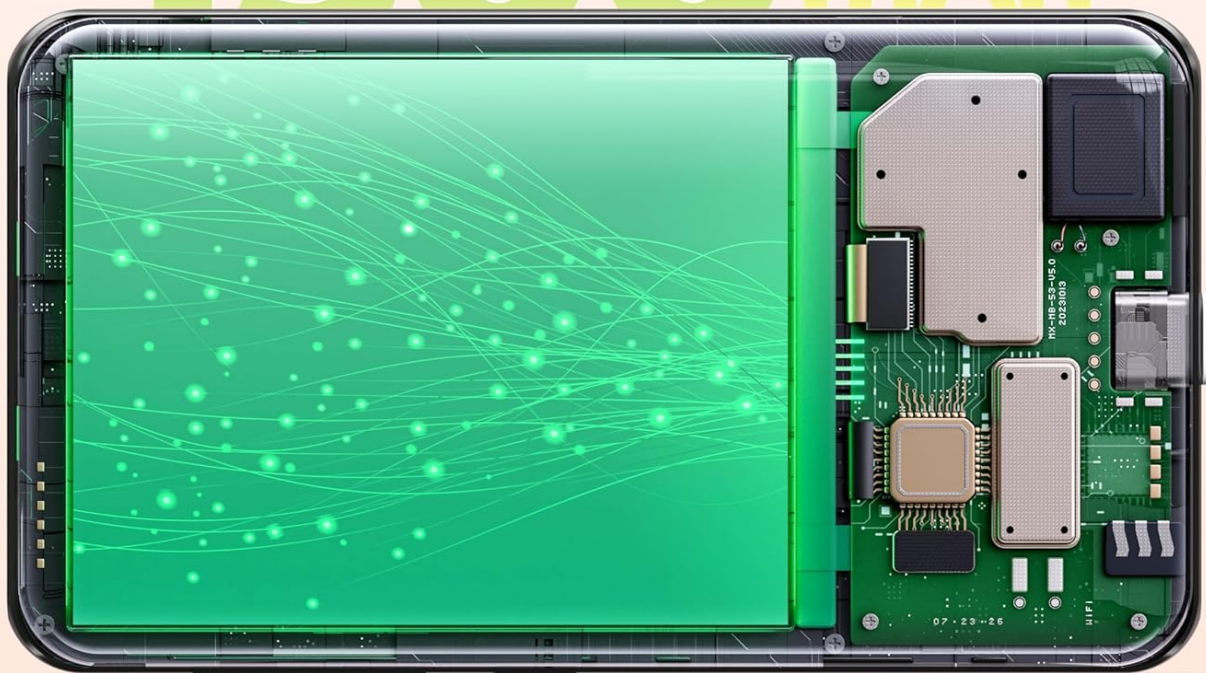
1. Charging the Device

Before initial use, fully charge the MP3 player. Connect the provided USB-C cable to the device's charging port and the other end to a USB power adapter (not included) or a computer's USB port. The battery indicator on the screen will show charging status.

Long Battery Life

Equiped high-quality lithium-ion 1500mAh battery, adopt low-power solution ensure you can enjoy music long time.

1500mAh



 **25** hrs music

 **5** hrs video

Image: Diagram illustrating the internal components and battery of the innioasis G3 MP3 Player, highlighting its 1500mAh capacity. Text indicates up to 25 hours of music playback and 5 hours of video playback.

2. Inserting the SD Card

The device comes with a 128GB SD card pre-installed or included separately. Locate the SD card slot on the side of the player. Gently insert the SD card with the gold contacts facing down until it clicks into place. The device supports up to 1TB external storage.

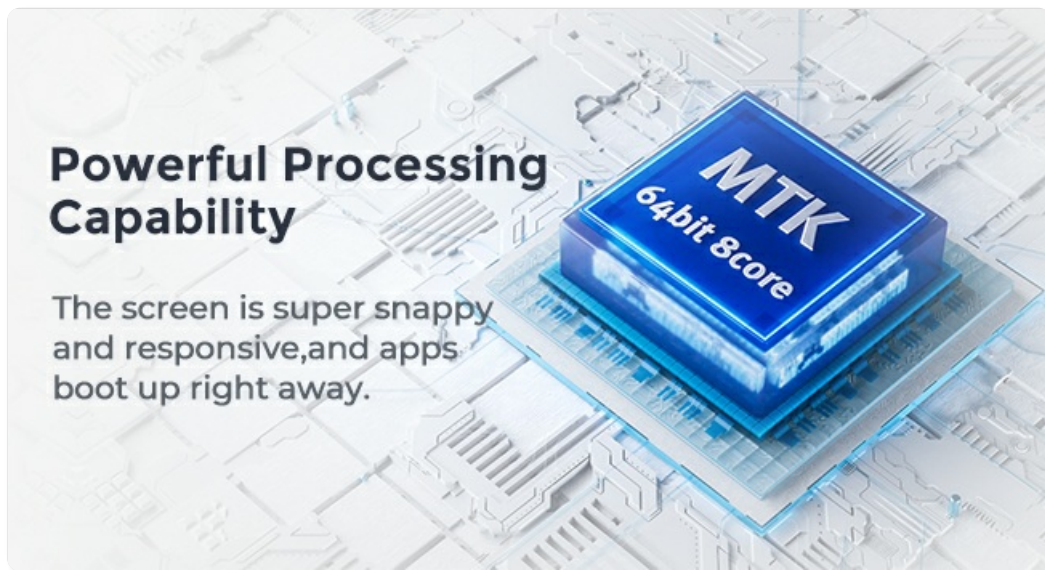


Image: The innioasis G3 MP3 Player shown alongside a 128GB SD card, illustrating its large storage capacity and the ability to expand up to 1TB.

3. Initial Power-On and Basic Settings

Press and hold the power button until the screen illuminates. Follow the on-screen prompts to select your language, time zone, and other initial settings.

4. Connecting to Wi-Fi

To access streaming services and online features, connect your device to a Wi-Fi network:

1. Go to **Settings**.
2. Select **Network & Internet**.
3. Toggle **Wi-Fi** to ON.
4. Select your desired network from the list and enter the password if prompted.

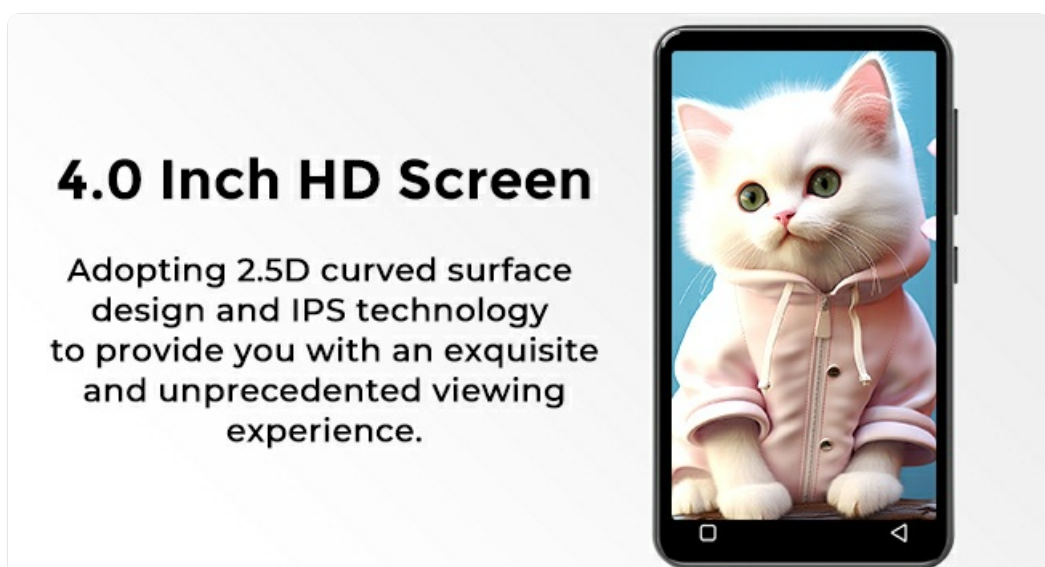


Image: The innioasis G3 MP3 Player displayed with icons representing dual-band Wi-Fi (2.4G and 5G) and Bluetooth 4.2, indicating strong

5. Connecting Bluetooth Devices

The G3 MP3 player supports Bluetooth 4.2 for connecting headphones, speakers, or car audio systems:

1. Ensure your Bluetooth accessory is in pairing mode.
2. On the MP3 player, go to **Settings**.
3. Select **Connected devices**, then **Bluetooth**.
4. Toggle **Bluetooth** to ON.
5. The player will scan for available devices. Select your device from the list to pair.

Wider and Stable Bluetooth Connect

Two-way connection technology make it is easy to connect with your Bluetooth earbuds,Bluetooth speaker and car.



Image: The innioasis G3 MP3 Player displaying a music playback screen, surrounded by miniature representations of Bluetooth headphones and a speaker, symbolizing its stable Bluetooth connectivity.

1. Navigating the Touch Screen

The innioasis G3 features a 4-inch high-definition touch screen. Navigate by tapping icons, swiping between screens, and using pinch-to-zoom gestures where applicable. The interface is designed for intuitive use, similar to a smartphone.

Not only a music player but also a storyteller

The mp3 player is the perfect companion for your everyday life.(Sports,traveling,Driving,sleeping and so on)



Image: A hand interacting with the full touch screen of the innioasis G3 MP3 Player, demonstrating its ease of use and responsive interface.

2. Music Playback

The device supports both local music files and streaming applications.

Local Music Playback:

The pre-installed music player app supports various formats including MP3, WAV, FLAC, AAC, APE, OGG, M4A, WMA, and MP2.

- To add music, connect the player to a computer via the USB-C cable and transfer files to the "Music" folder on the device or SD card.
- Open the **Music** app.
- Use the "Music Scan" feature to automatically detect new songs.
- Create and manage playlists as desired.

160GB Large Capacity

Built-in 2GB RAM+32GB ROM storage and along with a 128GB SD card. Additionally, the device features an SD card slot that allows for expandable external storage of up to 1TB.



Image: A detailed view of the innioasis G3 MP3 Player's local music player interface, showcasing features like playlist management, equalizer, search, and various playback modes.

Streaming Music:

The device comes with pre-installed streaming apps such as Spotify, Pandora, Amazon Music, Spotify Kids, Tidal, and Deezer. Ensure you are connected to Wi-Fi to use these services.

- Tap on the desired streaming app icon from the home screen.
- Log in with your account credentials.
- Browse and play music as you would on other devices.



Image: The innioasis G3 MP3 Player displaying various music streaming application icons, emphasizing its capability to stream music from popular platforms like Spotify, Amazon Music, and Pandora.

3. Audiobook Playback

The MP3 player includes pre-installed audiobook applications such as Audible, Audiobooks, Libby, LibriVox, and Kindle. These apps allow you to listen to audiobooks directly on the device.

- Open your preferred audiobook app.
- Download or stream audiobooks as per the app's instructions.

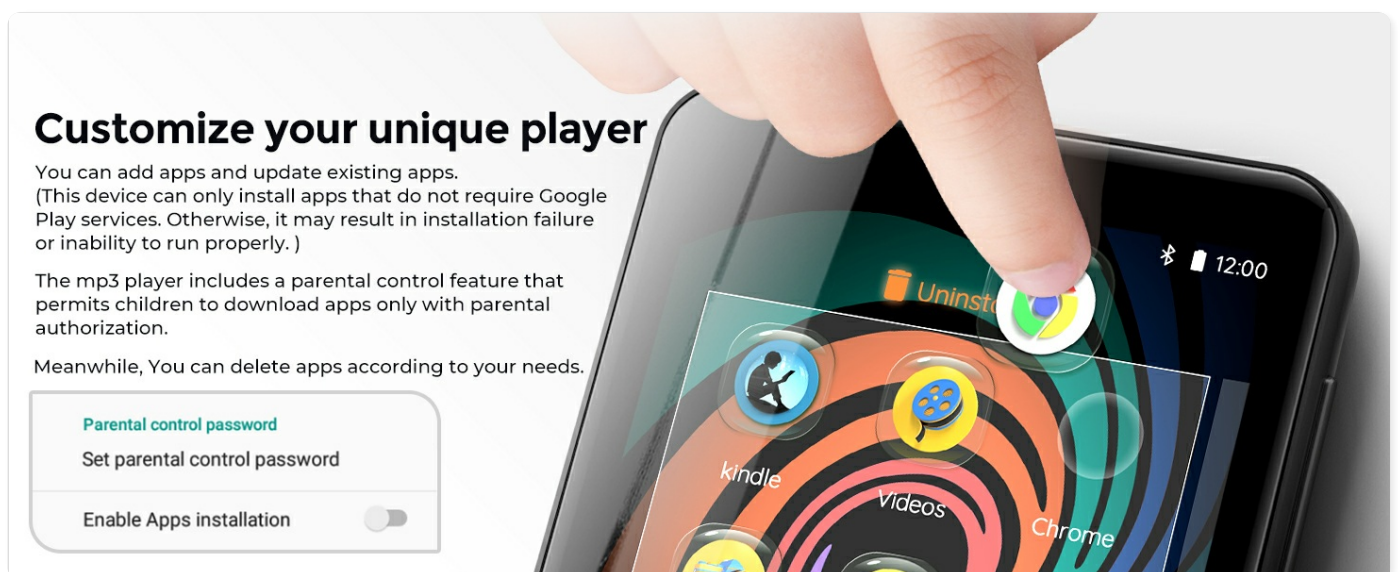


Image: The innioasis G3 MP3 Player showcasing various audiobook application icons, highlighting its support for platforms like Audible, Audiobooks, Libby, and Kindle.

4. Video Playback

The 4-inch HD touch screen supports 720p and 1080p video playback. Transfer video files to the device's storage or SD card, then use the pre-installed video player app to watch them.

5. Parental Controls

The device includes parental control features to manage content and usage:

- **App Installation Authorization:** New apps can only be downloaded with parental authorization.
- **App Uninstallation:** Unwanted pre-installed apps can be uninstalled.
- **Reset Lock:** Set a lock to prevent the device from being restored to factory settings.
- **Usage Limits:** Limit the duration of internet and player usage.

To access parental control settings, navigate to **Settings** and look for the parental control options.

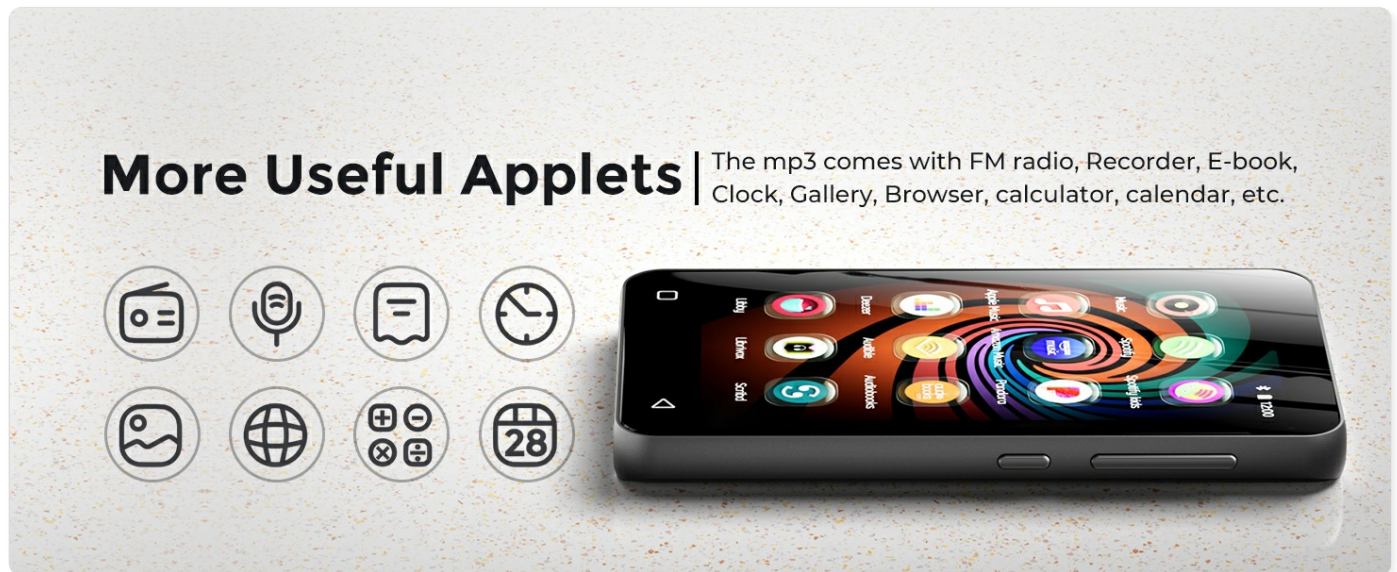


Image: A close-up of the innioasis G3 MP3 Player's screen showing the parental control settings interface, including options for setting a password and enabling app installation.

6. App Management

You can install additional apps and upgrade existing ones. Note that the MP3 player cannot install apps that require Google Play services (e.g., YouTube, YouTube Music).

- To install apps, ensure parental authorization is enabled if parental controls are active.
- To uninstall apps, long-press the app icon on the home screen and drag it to the uninstall option, or manage apps through **Settings > Apps**.

7. Other Applications

The device includes several practical apps:

- **Voice Recorder:** For recording audio.
- **FM Radio:** For listening to local radio stations (requires wired headphones as antenna).
- **eBook Reader:** For reading digital books.
- **File Transfer:** For managing files on the device.
- **Clock, Calendar, Calculator, Gallery, File Manager:** Standard utility applications.

Powerful local music player app

Support various music formats:
MP3, WAV, FLAC, APE, OGG, M4A,
AAC, WMA, MP2, AMR, MID etc.

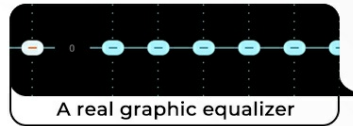
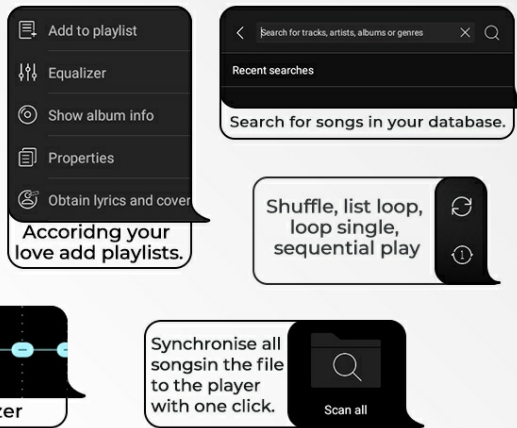


Image: The innioasis G3 MP3 Player displayed alongside icons representing its various utility applications, including FM radio, voice recorder, e-book reader, clock, gallery, browser, calculator, and calendar.

MAINTENANCE

1. Cleaning the Device

Use a soft, lint-free cloth to clean the screen and body of the MP3 player. Avoid using abrasive cleaners or solvents, as these can damage the device's surface.

2. Software Updates

Periodically check for software updates in the device's settings to ensure optimal performance and access to the latest features. Connect to Wi-Fi for updates.

3. Battery Care

To prolong battery life:

- Avoid exposing the device to extreme temperatures.
- Do not allow the battery to fully discharge frequently.
- If storing the device for an extended period, charge it to about 50% before storage.

TROUBLESHOOTING

Device Not Turning On:

- Ensure the battery is charged. Connect the device to a power source for at least 15 minutes.
- Press and hold the power button for 10-15 seconds to perform a forced restart.

Cannot Connect to Wi-Fi/Bluetooth:

- Ensure Wi-Fi/Bluetooth is enabled in settings.
- Restart the device and your router/Bluetooth accessory.
- Check if the Wi-Fi password is correct.
- For Bluetooth, ensure the accessory is in pairing mode and within range.

Apps Not Working/Crashing:

- Ensure the app is updated to the latest version.
- Clear the app's cache and data via **Settings > Apps > [App Name] > Storage**
- Uninstall and reinstall the app.
- Remember that apps requiring Google Play services are not supported.

Storage Issues:

- Check available storage in **Settings > Storage**.
- Delete unnecessary files or apps.
- Ensure the SD card is properly inserted and recognized.

SPECIFICATIONS

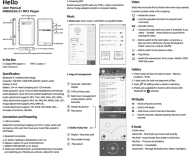
Feature	Detail
Product Dimensions	0.39 x 2.36 x 4.33 inches
Item Weight	8 ounces
Manufacturer	INNIOASIS
Model Name	G3
Batteries	1 Lithium Ion battery (included)
Special Features	Built-In Speaker, Equalizer, FM Radio, Hi-Res Audio
Connectivity Technology	Bluetooth 4.2, USB-C, Dual-band Wi-Fi (2.4GHz and 5GHz)
Memory Storage Capacity	32GB Internal ROM + 128GB SD card (included), expandable up to 1TB
RAM	2GB
Processor	8-core processor
Color	Gray
Screen Size	4 Inches
Display Technology	LCD, 2.5D curved surface design, IPS technology
Supported Media Types	Micro SD, Micro SDHC, Micro SDXC, SD Card, SDHC
Audio Playback Time	Up to 25 hours (with wired earbuds)
Video Playback Time	Up to 5 hours
Charging Port	Type-C
Charging Time	Approximately 2 hours for full charge

SUPPORT AND WARRANTY INFORMATION

For technical assistance, troubleshooting beyond this manual, or warranty inquiries, please contact innioasis customer support. Refer to the contact information provided with your purchase or visit the official innioasis website. Product protection plans are available for purchase separately. Please refer to your purchase documentation for details on

available plans and coverage.

Related Documents

	<p>Innioasis S1 MP3 Player User Manual</p> <p>User manual for the Innioasis S1 MP3 Player, covering features like music playback, video, e-books, FM radio, file management, and device settings. Includes specifications and warranty information.</p>
<p>Hello!</p> <p>Y1_V5.1</p>	<p>INNIOASIS Y1 MP3 Music Player User Manual and Guide</p> <p>Comprehensive user manual for the INNIOASIS Y1 MP3 Music Player, covering features like music playback, audiobooks, photos, FM radio, Bluetooth, settings, and troubleshooting. Learn how to transfer music, manage playlists, and use all device functions.</p>
<p>Hello!</p> <p>Y1_V5.30</p>	<p>INNIOASIS Y1 MP3 Music Player User Manual</p> <p>This user manual provides comprehensive instructions for operating the INNIOASIS Y1 MP3 Music Player, covering features like music playback, audiobooks, FM radio, photo viewing, Bluetooth connectivity, and settings.</p>
<p>Hello!</p>	<p>Innioasis Y1 MP3 Music Player User Manual</p> <p>Comprehensive user manual for the Innioasis Y1 MP3 Music Player, covering features like music playback, audiobooks, FM radio, photo viewing, Bluetooth connectivity, and settings.</p>