



Manuals.plus /

› Marsflex /

› Marsflex Front Blower Motor 700191 User Manual for 2003-2011 Chevy, GMC, and Cadillac Vehicles

Marsflex 700191

Marsflex Front Blower Motor 700191 Instruction Manual

Model: 700191 | Brand: Marsflex

1. INTRODUCTION

This manual provides essential information for the installation, operation, and maintenance of your Marsflex Front Blower Motor 700191. Please read these instructions carefully before installation to ensure proper function and safety.

Product Overview

The Marsflex Front Blower Motor is a high-quality automotive replacement part designed to restore proper airflow to your vehicle's heating, ventilation, and air conditioning (HVAC) system. It features an energy-efficient motor and a balanced fan for quiet and durable operation.



Image 1.1: Marsflex Front Blower Motor 700191. This image shows the complete blower motor assembly with its fan cage.

Compatibility

This front blower motor is compatible with a range of Chevrolet, GMC, and Cadillac vehicles. Please verify your vehicle's make, model, and year against the list below and the OE part numbers before proceeding with installation. This is a front blower motor; it is not suitable for rear blower motor applications.

- **Chevrolet:** 2003, 2005-2006 Silverado 1500 HD; 2003-2005 Avalanche 1500; 2003-2005 Avalanche 2500; 2003-2006 Silverado 1500; 2003-2006 Silverado 2500; 2003-2006 Silverado 2500 HD; 2003-2006 Silverado 3500; 2003-2011 Suburban 1500; 2003-2011 Suburban 2500
- **GMC:** 2003, 2005-2007 Sierra 1500 HD; 2003-2007 Sierra 1500; 2003-2004 Sierra 2500; 2003-2007 Sierra 2500 HD; 2003-2006 Sierra 3500; 2003-2011 Yukon; 2003-2011 Yukon XL 1500; 2003-2011 Yukon XL 2500
- **Cadillac:** 2009-2013 Escalade; 2007-2013 Escalade ESV; 2003-2011 Escalade EXT

Replaces OE Numbers: 700191, 89019320, 88986838, 89023346, 89019301, PM2728, PM9201, 5169, 3010033, 15-80387, 15-81124.



FRONT BLOWER MOTOR

APPLICATION

2009-2013	CADILLAC ESCALADE
2007-2013	CADILLAC ESCALADE ESV
2003-2011	CADILLAC ESCALADE EXT
2003-2005	CHEVROLET AVALANCHE 1500
2003-2005	CHEVROLET AVALANCHE 2500
2003-2006	CHEVROLET SILVERADO 1500
2003,2005-2006	CHEVROLET SILVERADO 1500 HD
2003-2006	CHEVROLET SILVERADO 2500
2003-2006	CHEVROLET SILVERADO 2500 HD
2003-2006	CHEVROLET SILVERADO 3500
2003-2011	CHEVROLET SUBURBAN 1500
2003-2011	CHEVROLET SUBURBAN 2500
2003-2007	GMC SIERRA 1500
2003,2005-2007	GMC SIERRA 1500 HD
2003-2004	GMC SIERRA 2500
2003-2007	GMC SIERRA 2500 HD
2003-2006	GMC SIERRA 3500
2003-2011	GMC YUKON
2003-2011	GMC YUKON XL 1500
2003-2011	GMC YUKON XL 2500

REPLACE PART NUMBER

89019320	700191	5169
88986838	PM2728	15-80387
89023346	PM9201	15-81124
89019301	3010033	



Image 1.2: Vehicle application list and OE part numbers for the Marsflex Front Blower Motor.

2. SAFETY INFORMATION

Always disconnect the vehicle's battery before performing any electrical work. Wear appropriate personal protective equipment (PPE) such as gloves and eye protection. If you are unsure about any step, consult a qualified automotive technician.

3. PACKAGE CONTENTS

- 1 x Marsflex Front Blower Motor with Fan Cage

4. SETUP AND INSTALLATION

The blower motor is typically located under the dashboard on the passenger side of the vehicle. Installation generally involves a few screws and an electrical connector. Refer to your vehicle's specific service manual for precise instructions.

Installation Steps:

1. **Detach the Cover:** Locate and detach the cover under the dashboard on the passenger side. This is

usually held in place by screws.

2. **Locate and Disconnect:** Find the old blower motor and disconnect its electrical connector.
3. **Remove Old Motor:** Unscrew or unclip the old blower motor from its housing and carefully remove it.
4. **Install New Motor:** Re-install the new Marsflex blower motor into the housing and secure it. Connect the blower motor electrical connector.
5. **Test Functionality:** Turn on the engine and the HVAC system. Verify that the blower motor operates correctly at all speeds and produces hot or cold air as expected.
6. **Reattach Cover:** Once confirmed working, reattach the dashboard cover.



Image 4.1: The blower motor is typically located under the dashboard on the passenger side.

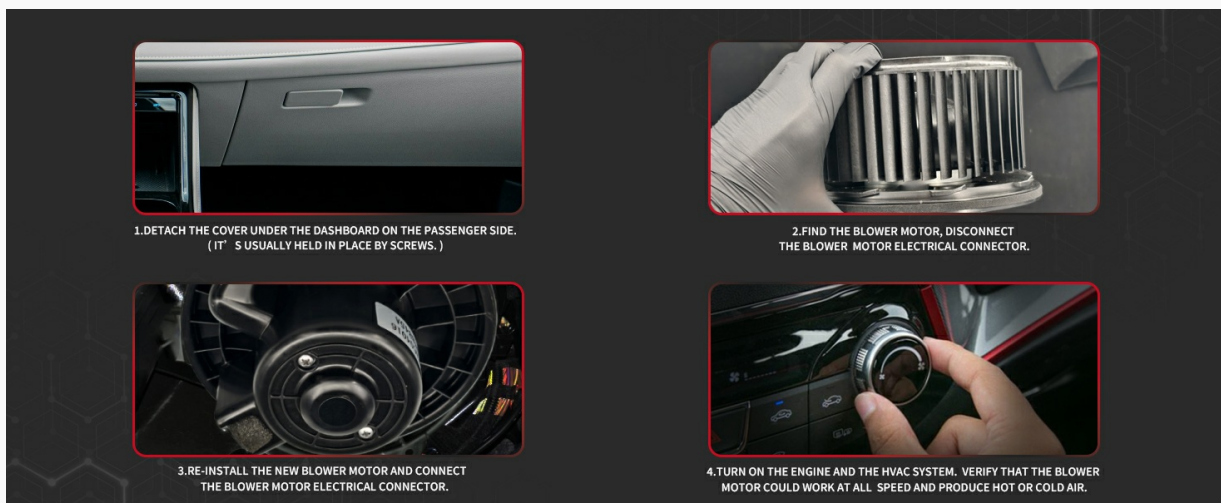


Image 4.2: Visual guide for detaching the cover, locating the motor, re-installing, and testing.

Installation Videos:

Video 4.1: *Installation of a Front Blower Motor for Chevy GMC Cadillac. This video demonstrates the process of replacing a front blower motor in compatible vehicles.*

Video 4.2: *General Blower Motor Installation Method. This video provides a general overview of how to install a blower motor.*

Video 4.3: *AC Heater Blower Motor Installation for GM Trucks and SUVs. This video shows the installation process for a blower motor in various GM vehicles.*

5. OPERATING INSTRUCTIONS

The blower motor operates automatically as part of your vehicle's HVAC system. Once installed, it will function when you select fan speeds for heating, ventilation, or air conditioning. Ensure all controls are set

to your desired comfort level.

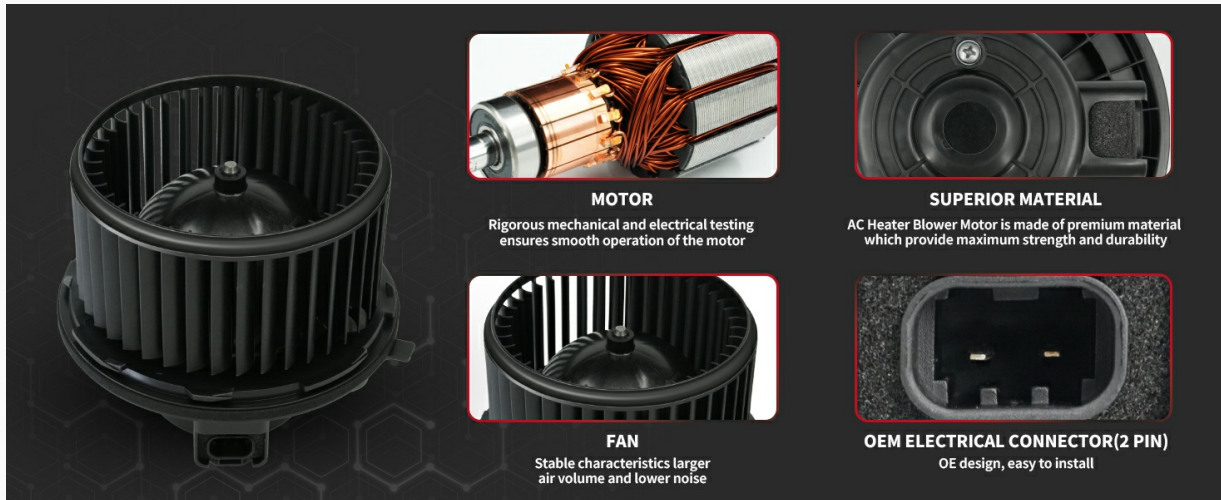


Image 5.1: Illustration of how the HVAC blower motor functions to circulate air through the vehicle's cabin.

6. MAINTENANCE

To ensure optimal performance and longevity of your blower motor, it is recommended to regularly check and replace your cabin air filter. A clogged filter can restrict airflow, causing the blower motor to work harder and potentially shorten its lifespan.

7. TROUBLESHOOTING

If you experience issues with your HVAC system after installation or during normal operation, refer to the common problems and solutions below:

- **Weak or Absent Airflow:** This is the most obvious sign of a malfunctioning blower motor. If the motor does not rotate or rotates very slowly, the blower motor may be broken.
- **Abnormal Fan Speed:** If the blower motor rotates at high speed regardless of the selected setting, or if the fan speed remains the same despite gear changes, the blower motor resistor may be faulty. A reliably operating blower motor should be able to operate at many different speeds to efficiently send air into your cabin.
- **Strange Noise:** Rattling, squealing, screeching, or noises that change or get louder with increased fan speed can indicate an issue with the blower motor or debris in the system.
- **Smoke or Burning Smell:** If you notice smoke or smells of burning while driving, pull over immediately and have the system inspected by a professional. This could indicate an electrical issue or motor overheating.

APPLICATION

2009-2013 CADILLAC ESCALADE
 2007-2013 CADILLAC ESCALADE ESV
 2003-2011 CADILLAC ESCALADE EXT
 2003-2005 CHEVROLET AVALANCHE 1500
 2003-2005 CHEVROLET AVALANCHE 2500
 2003-2006 CHEVROLET SILVERADO 1500
 2003,2005-2006 CHEVROLET SILVERADO 1500 HD
 2003-2006 CHEVROLET SILVERADO 2500
 2003-2006 CHEVROLET SILVERADO 2500 HD
 2003-2006 CHEVROLET SILVERADO 3500
 2003-2011 CHEVROLET SUBURBAN 1500
 2003-2011 CHEVROLET SUBURBAN 2500
 2003-2007 GMC SIERRA 1500

2003,2005-2007 GMC SIERRA 1500 HD
 2003-2004 GMC SIERRA 2500
 2003-2007 GMC SIERRA 2500 HD
 2003-2006 GMC SIERRA 3500
 2003-2011 GMC YUKON
 2003-2011 GMC YUKON XL 1500
 2003-2011 GMC YUKON XL 2500

REPLACE PART NUMBER

89019320 89019301 700191 5169
 88986838 PM2728 15-80387 3010033
 89023346 PM9201 15-81124

Image 7.1: Visual guide for diagnosing weak or absent airflow.

HOW TO JUDGE WHETHER THE BLOWER MOTOR IS BROKEN OR THE RESISTOR IS BROKEN?

THE BLOWER MOTOR IS BROKEN

The blower motor will not rotate
The blower motor rotates very slowly

THE RESISTOR IS BROKEN

The blower motor rotates at high speed
The gear changes but the blower motor speed remains the same





Image 7.2: Visual guide for diagnosing abnormal fan speed.



WEAK OR ABSENT AIRFLOW

WEAK OR NO AIRFLOW FROM AIR VENTS IS THE MOST OBVIOUS SIGN OF A BAD BLOWER MOTOR

Image 7.3: Visual guide for diagnosing strange noises from the HVAC system.

ABNORMAL FAN SPEED

A RELIABLY OPERATING BLOWER MOTOR SHOULD BE ABLE TO OPERATE AT MANY DIFFERENT SPEEDS TO MOST EFFICIENTLY SEND AIR INTO YOUR CABIN






Image 7.4: Visual guide for diagnosing smoke or burning smells from the HVAC system.

8. SPECIFICATIONS

Brand	Marsflex
Model Name	APAC04016-MM
Speed	2800 RPM
Voltage	12 Volts
Horsepower	150 Watts
Product Dimensions	6.5"W x 6.18"H
Material	Metal
Item Weight	3.36 Pounds

Marsflex 

HOW DOES THE HVAC BLOWER MOTOR WORK?



The blower motor is made of a motor that is powered by electricity, and a fan that pushes the air around. It is responsible for sending the cold and hot air generated by the air conditioner to the car through the air outlet through the rotation of the HVAC blower motor.

Image 8.1: Detailed dimensions of the Marsflex Front Blower Motor.

9. WARRANTY AND SUPPORT

The Marsflex Front Blower Motor comes with a 1-year warranty. If you have any questions, doubts, or queries regarding the product, installation, or performance, please do not hesitate to contact Marsflex customer support for assistance.

