

## Manuals+

[Q & A](#) | [Deep Search](#) | [Upload](#)

manuals.plus /

- › [Autel](#) /
- › [Autel EVO II Dual 640T Enterprise V3 Drone Instruction Manual](#)

## Autel EVO II Dual 640T

# Autel EVO II Dual 640T Enterprise V3 Drone Instruction Manual

Model: EVO II Dual 640T | Brand: Autel

## INTRODUCTION

---

This manual provides essential information for the safe and effective operation of your Autel EVO II Dual 640T Enterprise V3 drone. Please read this guide thoroughly before operating the aircraft.

# AUTEL ROBOTICS EVO II DUAL 640T ENTERPRISE V3

Experience the power of infrared Technology



**Dual Camera**  
Thermal + 8K  
Visual Camera



**1" CMOS**  
S-only



**Carbon**  
Fiber Arms



**42 Minutes**  
Flight Time



**Thermal Camera 640\*512 Resolution**



**10 Thermal Color Palettes**



**50MP Picture**



**F/1.9 Aperture**



**Moonlight Algorithm 2.0**



**16x digital zoom**



**Speaker/Spotlight/Strobe**



**360° Obstacle Avoidance**



**Autel Smart Controller V3**



**Autel SkyLink 2.0**



**15 KM Transmission**

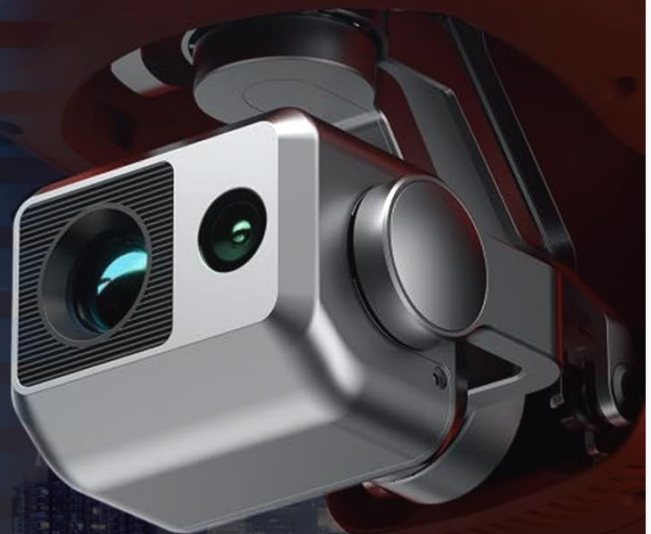


Image: The Autel EVO II Dual 640T Enterprise V3 drone, showcasing its compact, foldable design and dual camera system.

## SETUP

### Unboxing and Initial Preparation

Carefully remove all components from the packaging. Ensure all items listed in the combo are present.

- 1x Autel EVO 2 Dual 640T Enterprise V3 Aircraft (with 1x Battery, 2x Pair Propellers, 1x Gimbal Holder)
- 1x Smart Controller V3
- 2x Extra Batteries
- 2x Extra Pair Propellers
- 1x Gimbal Cover
- 1 Pair x Spare Control Sticks
- 1x Battery Charger & Power Cable
- 1x Car Charger
- 1x Multi-Charger

- 1x RC Charger & RC Charging Cable
- 1x Loudspeaker
- 1x Spotlight
- 1x Strobe
- 1x RC Protective Case
- 1x RC Lanyard
- 1x Extended Port Cover
- 1x Protector Case

## Battery Charging

Fully charge all aircraft batteries and the Smart Controller V3 before first use. Use the provided chargers and cables. The Smart Controller V3 features a built-in display and integrated true tone technology for optimal viewing.

## Aircraft Assembly

1. **Unfold Aircraft Arms:** Gently unfold the drone's carbon fiber arms until they lock into place.
2. **Attach Propellers:** Ensure propellers are securely attached. The Enterprise V3 features specialized low-noise propellers.
3. **Install Battery:** Insert a fully charged flight battery into the aircraft until it clicks securely.
4. **Remove Gimbal Cover:** Carefully remove the gimbal cover from the camera.
5. **Insert SD Card:** Insert a compatible microSD card into the designated slot for recording footage.

## Controller Setup

The Smart Controller V3 is ready for use out of the box. Ensure it is fully charged. It offers a 7.9" Ultra-HD (2048x1536) touch screen with 2000 nits brightness for clear visibility in direct sunlight.

# AUTEL SKYLINK 2.0

- 9 Miles (15KM)
- 2.7K Transmission Quality
- 2.4GHz / 5.8GHz / 900MHz



## AUTEL SMART CONTROLLER V3

- 7.9-Inch HD Touch Screen
- 4 °F to 104 °F Temperature Range
- 2000 nits Maximum Brightness
- IP43 Resistance

Image: The Autel Smart Controller V3, featuring a bright, high-resolution display for enhanced outdoor visibility.

## Firmware Updates

Always ensure your drone and controller firmware are up to date for optimal performance and access to the latest features. Refer to the Autel SkyLink 2.0 app for update notifications.

## OPERATING INSTRUCTIONS

### Powering On/Off

- Aircraft:** Press and hold the power button on the top of the aircraft for 3 seconds until the indicator lights illuminate.
- Controller:** Press and hold the power button on the Smart Controller V3 for 3 seconds. The controller will boot up and automatically connect to the drone.
- Power Off:** Repeat the process for both the aircraft and controller to power them off.

### Takeoff and Landing

Ensure you are in an open area, clear of obstacles. The drone features a robust 360-degree obstacle avoidance system for



enhanced safety.

- **Takeoff:** On the controller, use the one-key takeoff function or manually push both joysticks down and outwards to start the motors, then push the left joystick up to ascend.
- **Landing:** Use the one-key landing function or manually pull the left joystick down to descend slowly.

## Flight Controls

The Smart Controller V3 provides precise control over the aircraft. Familiarize yourself with joystick movements for ascent/descent, rotation, and horizontal movement.

## Camera Operation

The EVO II Dual 640T Enterprise V3 is equipped with a 640x512 30Hz thermal imaging sensor and a 50MP RYYB CMOS sensor. It supports 4X lossless zoom and 10+ temperature measurement modes.

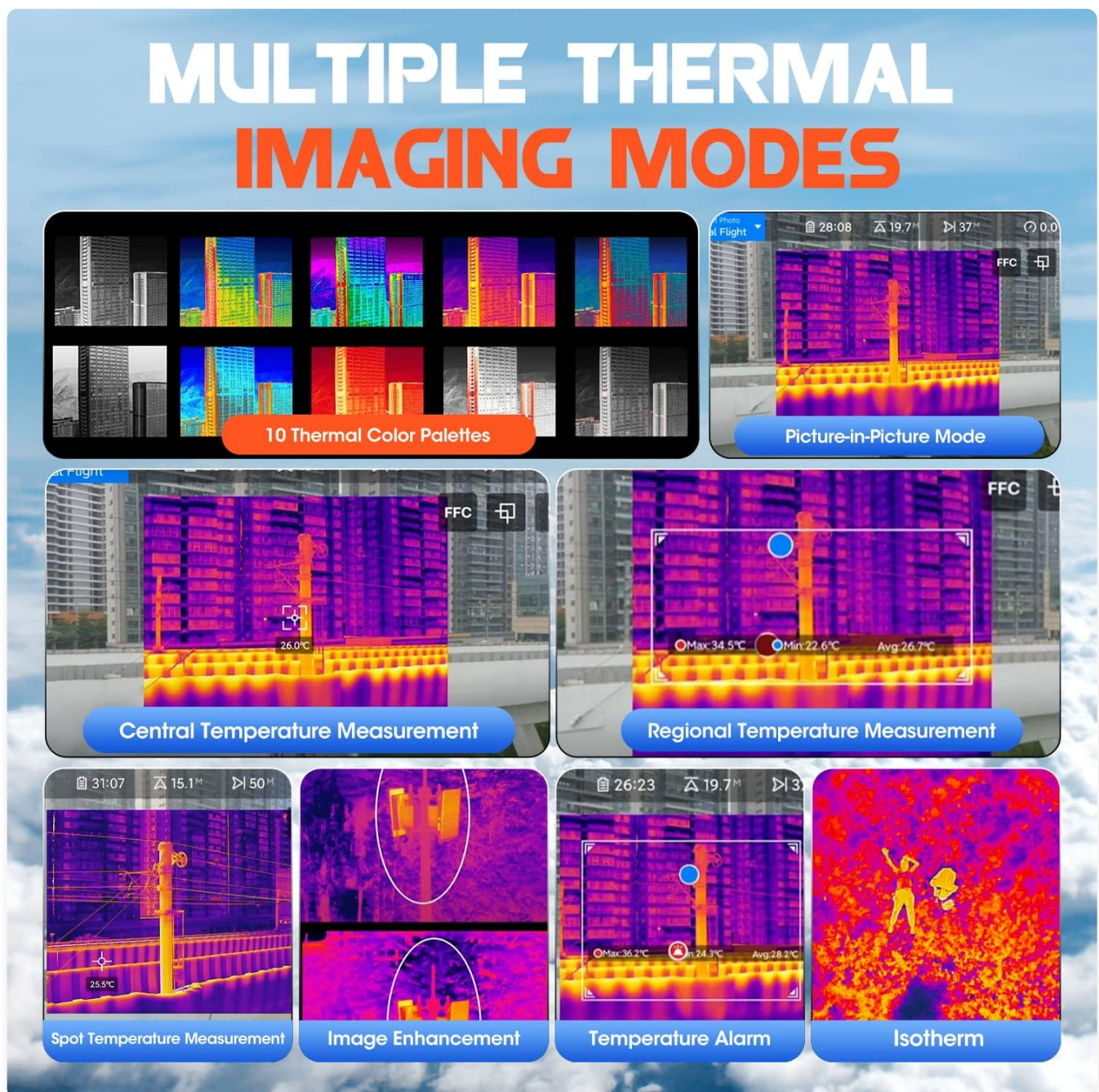


Image: Display of various thermal imaging modes and color palettes available on the drone.

- **Thermal Imaging:** Access 10+ temperature measurement modes including Central/Spot/Regional/Temperature Alarm/Isotherm/Image Enhancement/Picture-in-Picture Display Mode.



- **Visual Camera:** Capture 50-megapixel stills and 8K Ultra HD video. The Moonlight Algorithm 2.0 enhances low-light performance.
- **Zoom:** Utilize 4X lossless digital zoom for detailed inspection.

## Mission Versatility with Accessories

The drone supports various accessories to adapt to different scenarios:

- **Strobe:** For night operations and increased visibility.
- **Spotlight:** Aids in searches and illumination during low-light conditions.
- **Loudspeaker:** Enables effective on-site communication.

# MISSION VERSATILITY WITH ENTERPRISE ACCESSORIES

Equipped with these accessories, drones can be more widely used in various fields



 **Spotlight**



 **Speaker**



 **Strobe**



 **RTK**

 A-RTK Base Station
  RTK / PPK
  No Need for Ground Control Points
  Centimeter-Level Positioning

**NOTE:** The RTK module is not included in this package.

Image: The drone equipped with various accessories like a spotlight, speaker, and strobe, demonstrating its adaptability for different missions.

## Official Product Videos

Video: This video provides a detailed comparison of the upgrades in the V3 series compared to the V2, highlighting key improvements in features and performance.

Video: This video demonstrates the versatile capabilities of the Autel EVO II Dual 640T, showcasing its potential in various applications.

Video: A demonstration of the thermal imaging capabilities of the Autel EVO II Dual 640T V3, highlighting its advanced features.

Video: Footage captured by the EVO II Dual 640T Enterprise V3, demonstrating its thermal imaging capabilities in real-world scenarios, such as tracking deer.

## MAINTENANCE

---

### Cleaning and Care

- Regularly clean the camera lenses and sensors with a soft, dry cloth.
- Wipe down the drone body with a damp cloth to remove dust and debris.
- Avoid exposing the drone to extreme temperatures or direct sunlight for prolonged periods.

### Propeller Inspection

Inspect propellers for any signs of damage (cracks, bends, chips) before each flight. Replace damaged propellers immediately using the provided spare pairs.

### Battery Storage

Store batteries in a cool, dry place away from direct sunlight. Do not store fully charged batteries for extended periods; discharge them to around 50-60% for long-term storage.

### Firmware Updates

Periodically check for and install firmware updates for both the drone and the Smart Controller V3 to ensure optimal performance, new features, and bug fixes.

## TROUBLESHOOTING

---

### Common Issues and Solutions

- **Drone not powering on:** Ensure the battery is fully charged and correctly inserted.
- **Controller not connecting:** Verify both drone and controller are powered on. Check for interference and ensure they are within range. The SkyLink 2.0 system supports 2.4G/5.8G/900MHz tri-band communication for maximum anti-interference.
- **Poor image quality:** Clean camera lenses. Check for proper lighting conditions. Ensure correct camera settings are applied.
- **Unstable flight:** Perform IMU and compass calibrations. Check propellers for damage.
- **Obstacle avoidance not working:** Ensure sensors are clean and unobstructed. Check settings in the app.

For persistent issues, refer to the detailed troubleshooting guide on the Autel Robotics official website or contact customer support.

## SPECIFICATIONS

---

- **Brand:** Autel
- **Model Name:** Autel EVO II Dual 640T Enterprise V3
- **Special Feature:** Support Remote ID, 640\*512 Thermal Imaging, 50MP 0.8" CMOS Sensor
- **Color:** Orange
- **Video Capture Resolution:** 640x512 (Thermal)
- **Effective Still Resolution:** 50 MP
- **Connectivity Technology:** Electric

- **Item Weight:** 2.4 Pounds
- **Battery Capacity:** 6175 Milliamp Hours
- **Video Capture Format:** MP4
- **Remote Control Technology:** Proprietary (SkyLink 2.0)
- **Control Type:** Remote Control
- **Wireless Communication Technology:** Proprietary (SkyLink 2.0), RF
- **Battery Cell Composition:** Lithium Polymer
- **Product Dimensions:** 9.64"L x 5.1"W x 4.37"H
- **UPC:** 762917123035

## WARRANTY

---

The Autel EVO II Dual 640T Enterprise V3 is backed by a 30-day replacement or full refund policy and 12 months of services free from defects. This includes a U.S.-based warranty for timely and dedicated support.

## SUPPORT

---

For any issues or technical assistance, please contact AutelStoreOnline @ outlook . com. You can also visit the official Autel Robotics website for additional resources, FAQs, and the latest firmware updates.