

## Manuals+

[Q & A](#) | [Deep Search](#) | [Upload](#)

[manuals.plus](#) /

› [B BraiNice](#) /

› [B BraiNice Smart Remote for Samsung TVs - Instruction Manual](#)

## B BraiNice Sam1

# B BraiNice Smart Remote Instruction Manual

Model: Sam1

## PRODUCT OVERVIEW

---

The B BraiNice Smart Remote (Model Sam1) is designed as a compatible replacement for Samsung Smart TVs manufactured between 2018 and 2025, including Neo QLED, QLED, OLED, Crystal UHD, and Frame TV series. This remote features advanced dual charging capabilities (solar and USB-C), Bluetooth 5.1 connectivity for quick response, voice control, and dedicated shortcut buttons for popular streaming services.



Image: Front and back view of the B BraiNice Smart Remote, alongside its USB-C charging cable.

## SETUP

---

### 1. Charging the Remote

The B BraiNice Smart Remote utilizes a supercapacitor, eliminating the need for disposable batteries. It can be charged via two methods:

- **Solar Charging:** The remote features a built-in solar panel. Place the remote with the solar panel facing up in any indoor or outdoor light. Under optimal sunlight, the remote can be fully charged in approximately 5 hours. This allows for convenient, cord-free charging anytime, anywhere.

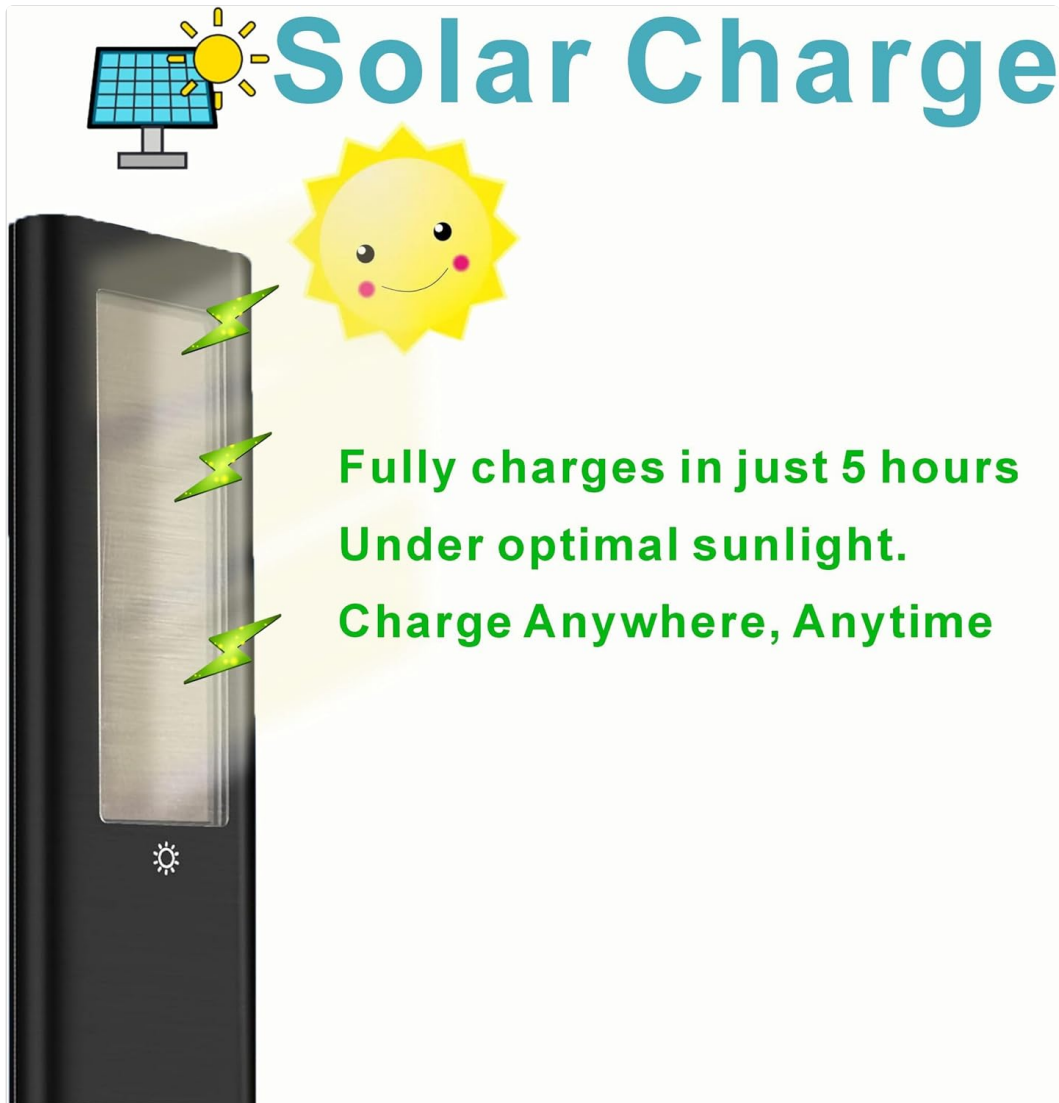


Image: The remote's side profile highlighting the integrated solar charging panel.



- **USB-C Charging:** For rapid charging, connect the remote to a power source using the provided USB-C cable. A full charge can be achieved in as little as 8 minutes, providing over 180 days (approximately 6 months) of power.



Image: The remote connected via USB-C cable for charging.

## 2. Pairing with Your Samsung TV

The remote pairs seamlessly with compatible Samsung TVs via Bluetooth. Follow these steps to pair your remote:

1. Ensure your Samsung TV is turned on.
2. Point the remote towards the TV.
3. Press and hold the **Back** button (  ) and the **Play/Pause** button (  ) simultaneously for approximately 6 seconds.
4. A pairing message will appear on your TV screen, indicating that the remote is connecting. Once connected, the message "Pairing complete" will be displayed.

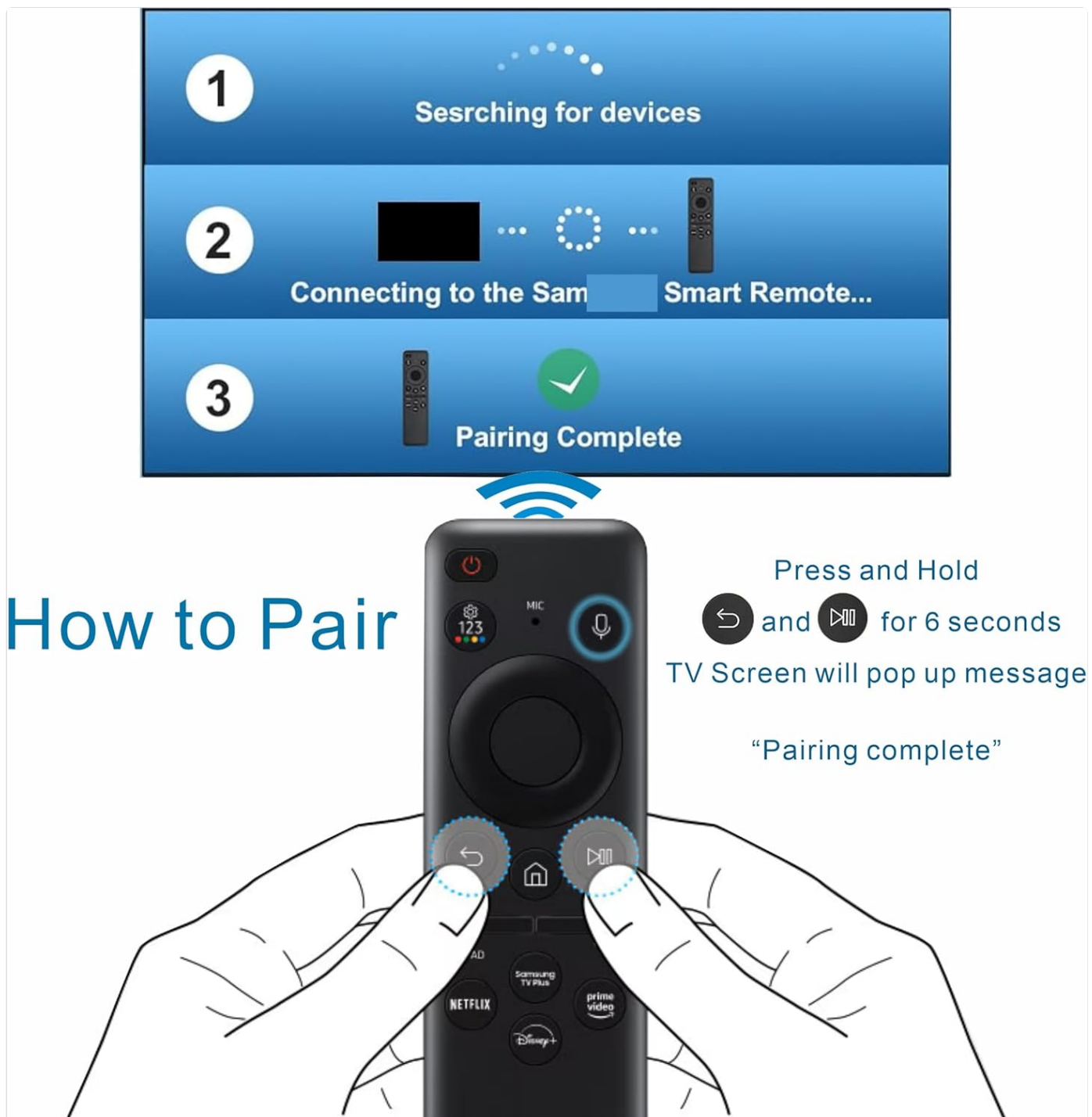


Image: Visual guide for the remote pairing process.

## OPERATING INSTRUCTIONS

### Basic Functions

The remote provides standard controls for your Samsung TV, including power on/off, volume adjustment, channel navigation, and menu access. The intuitive button layout ensures ease of use.

### Voice Control

After successful pairing, you can utilize the voice control feature for hands-free operation. Press the dedicated microphone button and speak your commands clearly. This allows you to search for content, control playback, adjust volume, and more.

# Compatible with all Samsung Smart TVs Made from 2018-2025



QLED/ Neo QLED series

Crystal UHD series

Frame TV series

OLED series

Terrace, Sero, Serif

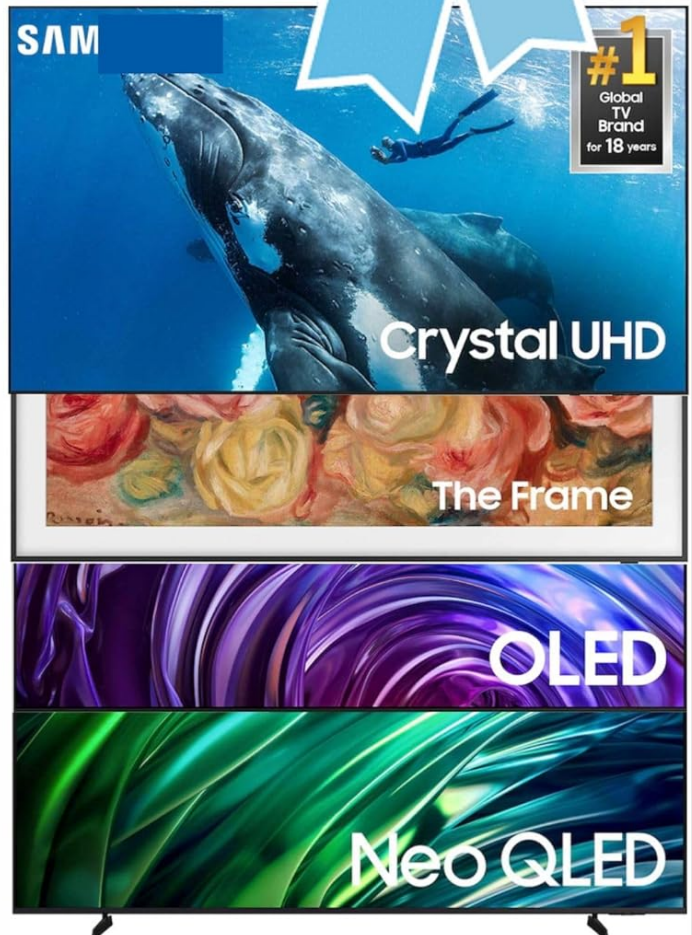


Image: Demonstrating the voice search capability of the remote.

## Streaming Service Shortcuts

The remote includes dedicated shortcut buttons for popular streaming services such as Netflix, Prime Video, and YouTube. Pressing these buttons provides instant access to the respective applications. Ensure the applications are installed on your Samsung TV for these shortcuts to function.

## Compatibility

This remote is designed to be compatible with a wide range of Samsung Smart TVs from 2018 to 2025. This includes, but is not limited to, the following series:

- QLED / Neo QLED series
- Crystal UHD series
- Frame TV series
- OLED series
- Terrace, Sero, Serif models

# Voice Search

## Need Paring

Show me the cartoon

Turn up the volume.

What's the weather today?



Image: Visual representation of compatible Samsung TV models.

It serves as an effective substitute for many original Samsung remote models released within the 2018-2025 timeframe.

## Compatible with Samsung Remotes made from 2018-2025



Image: The B BraiNice remote positioned as a substitute among various Samsung remote designs.

### Operating Range

The remote operates effectively up to 20 meters (approximately 65 feet) through walls, providing whole-home control for your Samsung TV.

### MAINTENANCE

The B BraiNice Smart Remote is designed for durability and minimal maintenance. Its supercapacitor technology means you will never need to replace batteries.

- **Cleaning:** To clean the remote, gently wipe it with a soft, dry cloth. Avoid using abrasive cleaners or solvents, as these may damage the surface or internal components.
- **Charging:** Regularly expose the remote to light for solar charging, or use the USB-C port for quick recharges to ensure continuous operation.
- **Durability:** The remote is designed to be chew-resistant and shockproof, making it suitable for households with pets or children.



## Why choose **This Remote**

Good Reputation

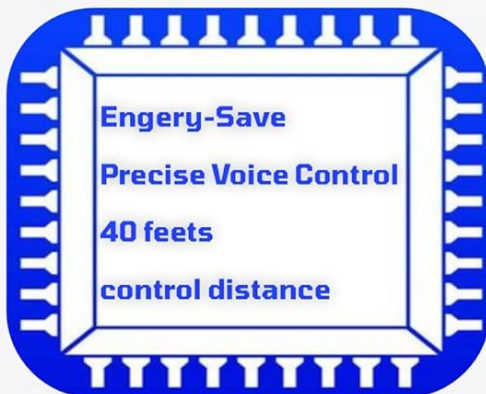


High Quality



120,000 clicks  
Fast response in 0.2s

Advanced CHIP



Passed drop test



Image: Features highlighting the remote's robust construction and advanced technology.

## TROUBLESHOOTING

### • Remote Not Responding:

- Ensure the remote is sufficiently charged. Try charging it via USB-C for 5-10 minutes.
- Re-attempt the pairing process (refer to 'Setup' section).
- Ensure there are no obstructions between the remote and the TV.

### • Voice Control Not Working:

- Confirm the remote is successfully paired via Bluetooth. Voice control requires a Bluetooth connection.
- Speak clearly and directly into the microphone.
- Check your TV's settings to ensure voice control is enabled.

### • Streaming Shortcut Buttons Not Working:

- Verify that the respective streaming applications (Netflix, Prime Video, YouTube) are installed on your Samsung TV.
- Ensure your TV has an active internet connection.

## SPECIFICATIONS

---

Feature	Detail
Brand	B BraiNice
Model	Sam1
Compatible Devices	Samsung TVs (2018-2025 models: Neo QLED, QLED, OLED, Crystal UHD, Frame TVs)
Special Features	Samsung TV Control, Universal, Solar/USB-C Rechargeable, Voice Control, Streaming Shortcuts
Battery Type	Supercapacitor (No disposable batteries required)
Charging Time (Solar)	Approx. 5 hours (optimal sunlight)
Charging Time (USB-C)	Approx. 8 minutes
Power Duration (Full Charge)	180+ days
Connectivity	Bluetooth 5.1
Operating Range	Up to 20 meters (through walls)
Dimensions (L x W x H)	14 x 4 x 0.6 cm
Weight	80 g

## WARRANTY AND SUPPORT

---

The B BraiNice Smart Remote comes with a **1-Year Service+** warranty, providing 365-day coverage from the date of purchase. For any replacements, troubleshooting assistance, or general inquiries, please contact our Canada-based support team. We are committed to providing hassle-free assistance to ensure your satisfaction.

Contact information for support can typically be found on the product packaging or the retailer's website where the product was purchased.