

manuals.plus /

› [Phomemo](#) /

› [Phomemo D530 Pro Thermal Label Printer User Manual](#)

## Phomemo D530 Pro

# Phomemo D530 Pro Thermal Label Printer User Manual

Model: D530 Pro

## 1. INTRODUCTION

This user manual provides comprehensive instructions for the setup, operation, maintenance, and troubleshooting of your Phomemo D530 Pro Thermal Label Printer. Please read this manual carefully before using the printer to ensure optimal performance and longevity.



The Phomemo D530 Pro Thermal Label Printer, shown here actively printing a label, highlights its compact design and integrated label output.

## 2. PRODUCT OVERVIEW

The Phomemo D530 Pro is a high-resolution 300DPI thermal label printer designed for efficiency and versatility. It supports various label sizes from 1 to 4.6 inches in width and offers multiple connectivity options to suit diverse operating environments.

### Key Features:

- **Wireless Bluetooth Fast Connection:** High-speed Bluetooth connectivity for printing from mobile devices (Android/iOS) and computers (Windows/macOS/Linux/ChromeOS) within 10 meters.
- **300DPI Fast Ultra HD Printing:** Equipped with a high-precision print head, offering 300DPI clarity and print speeds up to 150mm/s, capable of printing approximately 72 4x6 inch labels per minute.
- **Built-in Paper Slot:** Features an integrated paper slot and label holder that can accommodate up to 500pcs of 4x6 inch label paper rolls, reducing desktop clutter and eliminating the need for external holders.

- **Powerful Platform Compatibility:** Compatible with major shipping and sales platforms including USPS, UPS, FedEx, DHL, Amazon, eBay, Shopify, Etsy, PayPal, and Poshmark.
- **Versatile Label Support:** Supports various label types and shapes, including shipping labels (4x6 inches), rectangular, circular, and special-shaped labels.
- **Ethernet/USB Connectivity:** In addition to Bluetooth, the printer supports Ethernet and USB cable connections for enhanced flexibility with computers.



This image illustrates the multiple connectivity options of the Phomemo D530 Pro, including Bluetooth for mobile devices, USB for computers, and Ethernet for network printing.

# Supports printing all - shaped labels,

## width 1" - 4.6"



The printer supports a wide range of label widths from 1 to 4.6 inches, accommodating various label shapes and sizes for diverse applications.

### 3. SETUP

#### 3.1 Unboxing and Package Contents

Carefully remove all components from the packaging. Verify that all items listed below are present:

- Phomemo D530 Pro Thermal Label Printer



- Power Adapter
- Power Cord
- USB Cable
- Type-C Adapter
- Label Roll (test)
- Quick Start Guide / User Guide

## What's included in the package?



300 DPI Bluetooth Label Printer



Power Cord



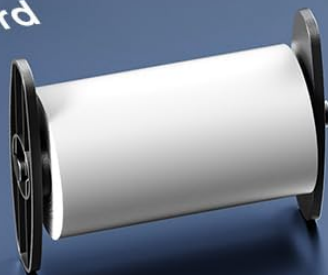
Type-C Adapter



USB-Cable



Power Adapter



Label Roll (test)



User Guide

An overview of the items included in the Phomemo D530 Pro printer package, ensuring you have all necessary components for setup.

## 3.2 Loading Labels

1. Open the top cover of the printer.
2. Place the label roll into the built-in paper slot, ensuring the labels feed from the bottom of the roll and the printable side faces upwards.
3. Adjust the movable baffle to fit the width of your labels snugly, preventing misalignment during printing.
4. Feed the leading edge of the labels through the printer's output slot until it extends slightly outside.
5. Close the top cover. The printer will automatically detect and calibrate the label size.



The Phomemo D530 Pro is designed to support both roll and fanfold thermal labels, offering flexibility in media choice.

## 3.3 Connecting the Printer

The D530 Pro offers multiple connection methods:

### 3.3.1 USB Connection

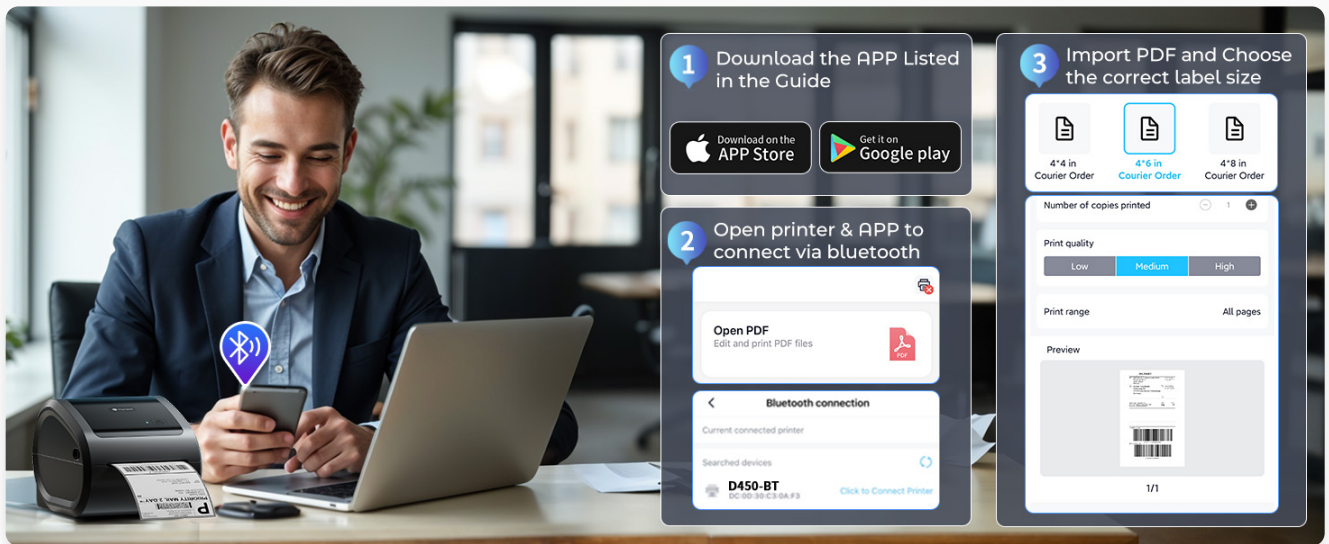
- Connect one end of the USB cable to the printer's USB port and the other end to your computer (Windows/macOS/ChromeOS/Linux).
- Install the necessary drivers from the official Phomemo website or the provided software.

### 3.3.2 Bluetooth Connection

- Ensure Bluetooth is enabled on your mobile device (Android/iOS) or computer.
- Download and install the "Labelife" app from your device's app store.
- Open the app and follow the on-screen instructions to search for and connect to your D530 Pro printer via Bluetooth.

### 3.3.3 Ethernet (LAN) Connection

- Connect an Ethernet cable from your router or network switch to the printer's Ethernet port.
- Ensure your computer is on the same local area network (LAN) as the printer.
- Refer to the printer's network settings or the Labelife software for network configuration if needed.



This image demonstrates the process of connecting the printer via Bluetooth using the Labelife app, including downloading the app and importing PDF files for printing.

## 4. OPERATING THE PRINTER

### 4.1 Printing from the Labelife App (Mobile)

1. Ensure your printer is connected via Bluetooth to your mobile device.
2. Open the Labelife app.
3. Select or create your label design. The app allows for customization, PDF imports, DIY label creation, and generating 1D/QR codes.
4. Confirm print settings such as label size, quantity, and print quality.
5. Tap the print button to send the job to the printer.

### 4.2 Printing from Computer (USB/Ethernet)

1. Ensure the printer is connected to your computer via USB or Ethernet and drivers are installed.
2. Open the document or application from which you wish to print (e.g., shipping platform, PDF viewer).
3. Select "Print" from the application's menu.
4. Choose "Phomemo D530 Pro" as your printer.
5. Adjust print preferences such as paper size (e.g., 4x6 inches), orientation, and copies.
6. Click "Print" to initiate the printing process.



# For shipping labels



The Phomemo D530 Pro is an ideal tool for efficiently printing shipping labels, streamlining the packaging process for businesses.



## For business labels



Beyond shipping, the printer is also suitable for creating various business labels, such as product labels for a bakery.

## 5. MAINTENANCE

### 5.1 Cleaning the Print Head

To maintain optimal print quality, regularly clean the print head. Use a lint-free cloth lightly dampened with isopropyl alcohol. Gently wipe the print head surface. Ensure the printer is turned off and unplugged before cleaning.

## 5.2 General Care

- Keep the printer in a clean, dust-free environment.
- Avoid exposing the printer to direct sunlight or extreme temperatures.
- Do not use abrasive cleaners or solvents on the printer's exterior.
- Only use high-quality thermal labels to prevent damage to the print head.

## 6. TROUBLESHOOTING

### 6.1 Common Issues and Solutions

Problem	Possible Cause	Solution
No Power	Power cable disconnected; Power adapter faulty	Check power connections; Try a different outlet; Contact support if adapter is faulty.
Poor Print Quality (Faint/Streaky)	Dirty print head; Low-quality labels; Incorrect print density settings	Clean the print head; Use recommended thermal labels; Adjust print density in software.
Labels Not Feeding Correctly	Labels loaded incorrectly; Baffle not adjusted; Paper jam	Reload labels correctly; Adjust baffle to fit label width; Clear any paper jams.
Bluetooth Connection Issues	Bluetooth off; Printer not paired; App issues	Ensure Bluetooth is on; Re-pair the device; Restart app/printer; Update app.
Cannot Print from Mac (Specific Issue)	Driver/software compatibility; Incorrect COM port mapping	Ensure correct drivers are installed from <a href="https://d530.labelife.cc">d530.labelife.cc</a> ; Verify COM port mapping for Bluetooth connection (as per user reviews). Consider using USB or Ethernet if Bluetooth remains problematic.

## 7. SPECIFICATIONS

Feature	Detail
Model Name	D530 Pro
Printing Technology	Thermal
Maximum Print Resolution	300 DPI
Maximum Print Speed	150mm/s (approx. 72 4x6 labels/min)
Connectivity Technology	Bluetooth, USB, LAN (Ethernet)
Compatible Devices	Smartphones (iOS, Android), PC (Windows, macOS, Linux, ChromeOS), Tablets
Maximum Media Size	4x6 inches

Feature	Detail
Print Media Type	Labels (Roll and Fanfold)
Max Input Sheet Capacity	500 (for 4x6 inch label rolls)
Product Dimensions	6.88"D x 6.18"W x 8.6"H
Item Weight	5.22 pounds
Printer Ink Type	No Ink (Thermal Printer)

## 8. WARRANTY AND SUPPORT

### 8.1 Warranty Information

The Phomemo D530 Pro Thermal Label Printer comes with a limited warranty. Please refer to the warranty card included in your package or visit the official Phomemo website for detailed terms and conditions.

### 8.2 Customer Support

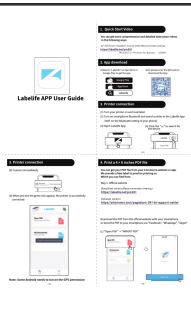

For technical assistance, troubleshooting, or any inquiries regarding your Phomemo D530 Pro printer, please contact Phomemo customer support. You can find contact information on the official Phomemo website or through the retailer where you purchased the product.

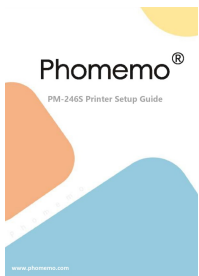

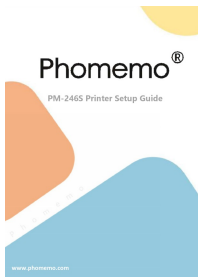

Visit the official Phomemo Store for more information and support:[Phomemo Store on Amazon](#)



© 2025 Phomemo. All rights reserved.

### Related Documents - D530 Pro

	<p><a href="#">Phomemo 241-BT Bluetooth Thermal Label Printer: Installation and User Resources</a></p> <p>Find installation tutorials, user guides, and support resources for the Phomemo 241-BT Bluetooth Thermal Label Printer, a wireless solution for small businesses and shipping.</p>
	<p><a href="#">Phomemo PM-241 Printer Setup Guide: Comprehensive Instructions and Troubleshooting</a></p> <p>A complete guide to setting up and using the Phomemo PM-241 label printer. This manual covers driver installation for Mac and Windows, troubleshooting common issues, and configuring the printer with various e-commerce and shipping platforms.</p>

	<p><a href="#">Phomemo PM-246S Printer Setup Guide</a></p> <p>This comprehensive setup guide provides detailed instructions for installing and configuring the Phomemo PM-246S label printer. It covers essential topics such as adjusting label margins, creating custom label sizes, and integrating the printer with popular e-commerce and shipping platforms like Amazon FBA, UPS, Shopify, Etsy, and more. Users will find valuable troubleshooting tips and support resources to ensure optimal performance of their Phomemo PM-246S.</p>
	<p><a href="#">Phomemo PM-246S Label Printer Setup Guide and Troubleshooting</a></p> <p>This comprehensive guide provides detailed instructions for setting up the Phomemo PM-246S label printer on Mac and Windows, including driver installation, troubleshooting common issues, and configuring settings for various e-commerce platforms.</p>
	<p><a href="#">Phomemo PM-246S Label Printer Setup and Troubleshooting Guide</a></p> <p>Comprehensive setup guide and troubleshooting manual for the Phomemo PM-246S label printer, covering driver installation for Mac and Windows, label adjustments, and platform-specific printing instructions.</p>
	<p><a href="#">Phomemo PM-246S Logistics Label Printer Quick Start Guide</a></p> <p>This quick start guide provides comprehensive instructions for setting up and using the Phomemo PM-246S Logistics Label Printer. Learn about printer components, label loading, driver installation for macOS and Windows, printer settings, status light indicators, feed button functions, maintenance, and safety notices for optimal performance and longevity.</p>