

[Manuals.plus](#) /

› [LICAEVEY](#) /

› LICAEVEY HW-425 Wireless Audio Module Instruction Manual

## LICAEVEY HW-425

# LICAEVEY HW-425 Wireless Audio Module Instruction Manual

Model: HW-425

## INTRODUCTION

This manual provides detailed instructions for the installation, operation, and maintenance of the LICAEVEY HW-425 Wireless Audio Module. This module is designed for DIY audio projects, offering 4.2 stereo wireless audio with lossless playback capabilities.

Please read this manual thoroughly before using the product to ensure proper functionality and to prevent damage.

## PRODUCT FEATURES

- Supports 4.2 wireless connectivity with a connection distance of up to 20 meters in open environments.
- Dual channel stereo lossless playback for high-fidelity audio.
- Designed with precise cuts and interfaces for easy integration into various speaker DIY modifications.
- Constructed from durable materials to resist corrosion and wear.
- Utilizes a professional chipset for stable and superior system performance.

## PACKAGE CONTENTS

Verify that all items listed below are present in the package:

- HW-425 Wireless Audio Module x 1

# Adopting professional chipset

Ensure superior performance in the system.

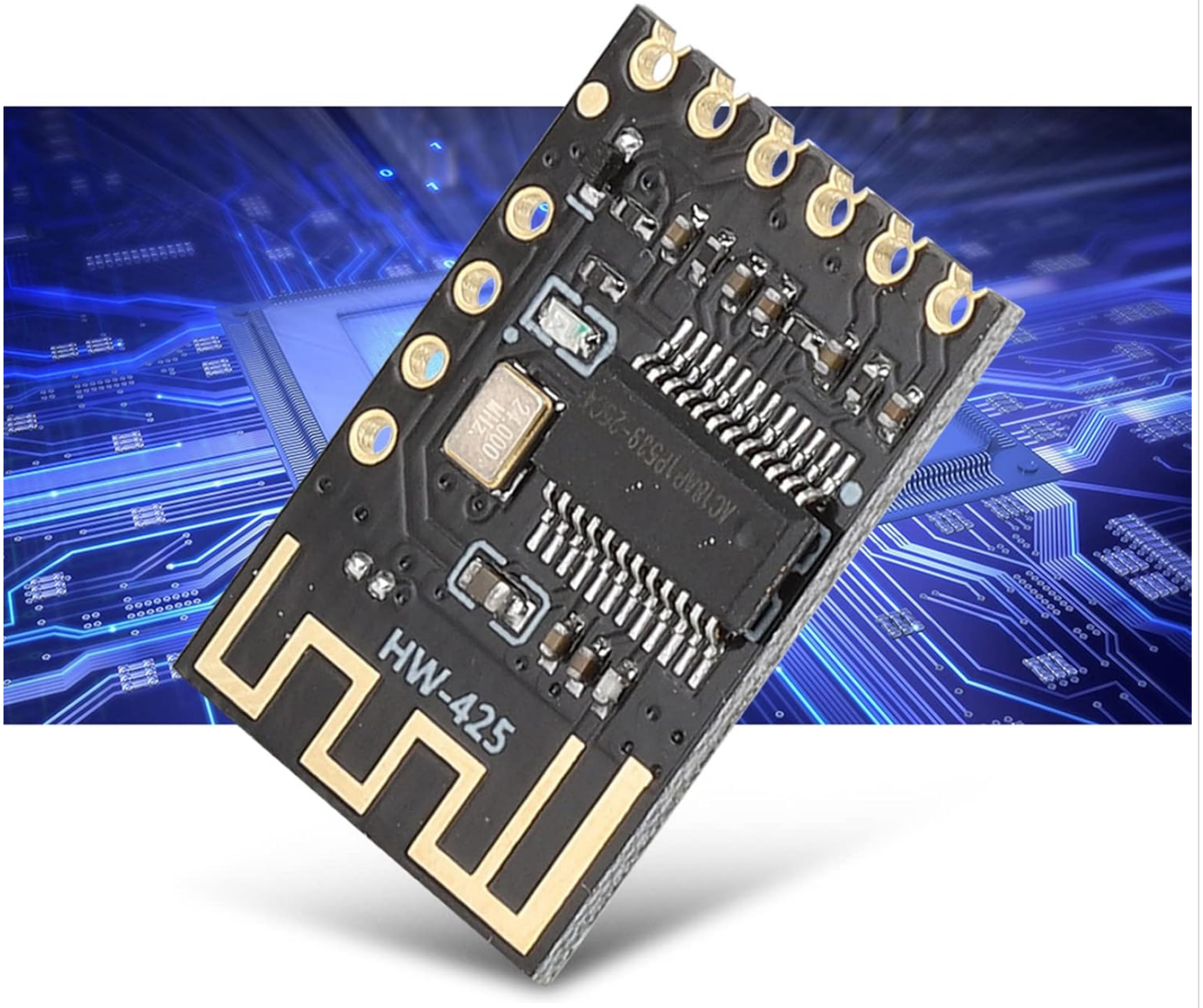


Image: The HW-425 Wireless Audio Module, showing its compact design and integrated components.

## SPECIFICATIONS

| Parameter           | Value                                 |
|---------------------|---------------------------------------|
| Item Type           | Module                                |
| Model               | HW-425                                |
| Name                | Wireless Audio Module 4.2 Stereo      |
| Power Supply        | Default 5V                            |
| Connection Distance | Approx. 20M / 66ft (open environment) |
| Dimensions          | 2.36 x 2.36 x 0.39 inches (Package)   |
| Item Weight         | 0.071 ounces                          |

## SETUP AND INSTALLATION

The HW-425 module is designed for integration into existing audio systems or DIY projects. Follow these steps for proper setup:

1. **Power Connection:** Connect a stable 5V DC power supply to the VCC and GND pins of the module. Ensure correct polarity to prevent damage.
2. **Audio Output:** Connect the L (Left) and R (Right) pins to your amplifier or audio input of your speakers. The GND pin should also be connected to the audio ground.
3. **Control Pins (Optional):** The module includes MUTE and KEY pins for advanced control. Refer to your project's specific requirements for their use. The MUTE pin can be used to mute the audio output, and the KEY pin can be used for control inputs (e.g., play/pause, next track).

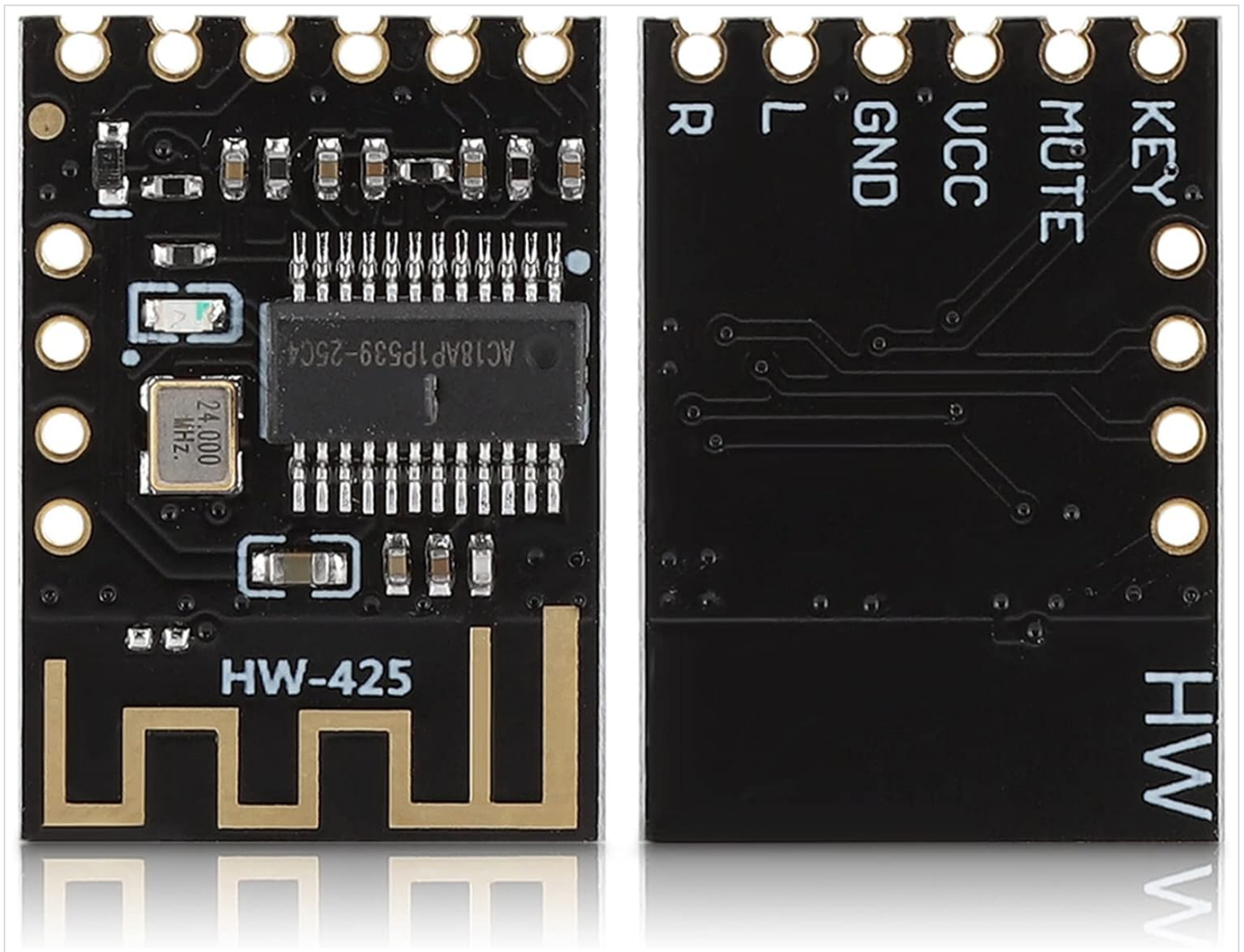


Image: Top and bottom view of the HW-425 module, illustrating the pinout for connections including R, L, GND, VCC, MUTE, and KEY.

**Mounting:** The module features precise cuts and interfaces for easy mounting. Secure the module in a suitable position within your enclosure, ensuring it is protected from environmental factors and physical stress.

# PRECISE CUTS AND INTERFACES

Ensure perfect fit, suitable for mounting positions and easy to install.

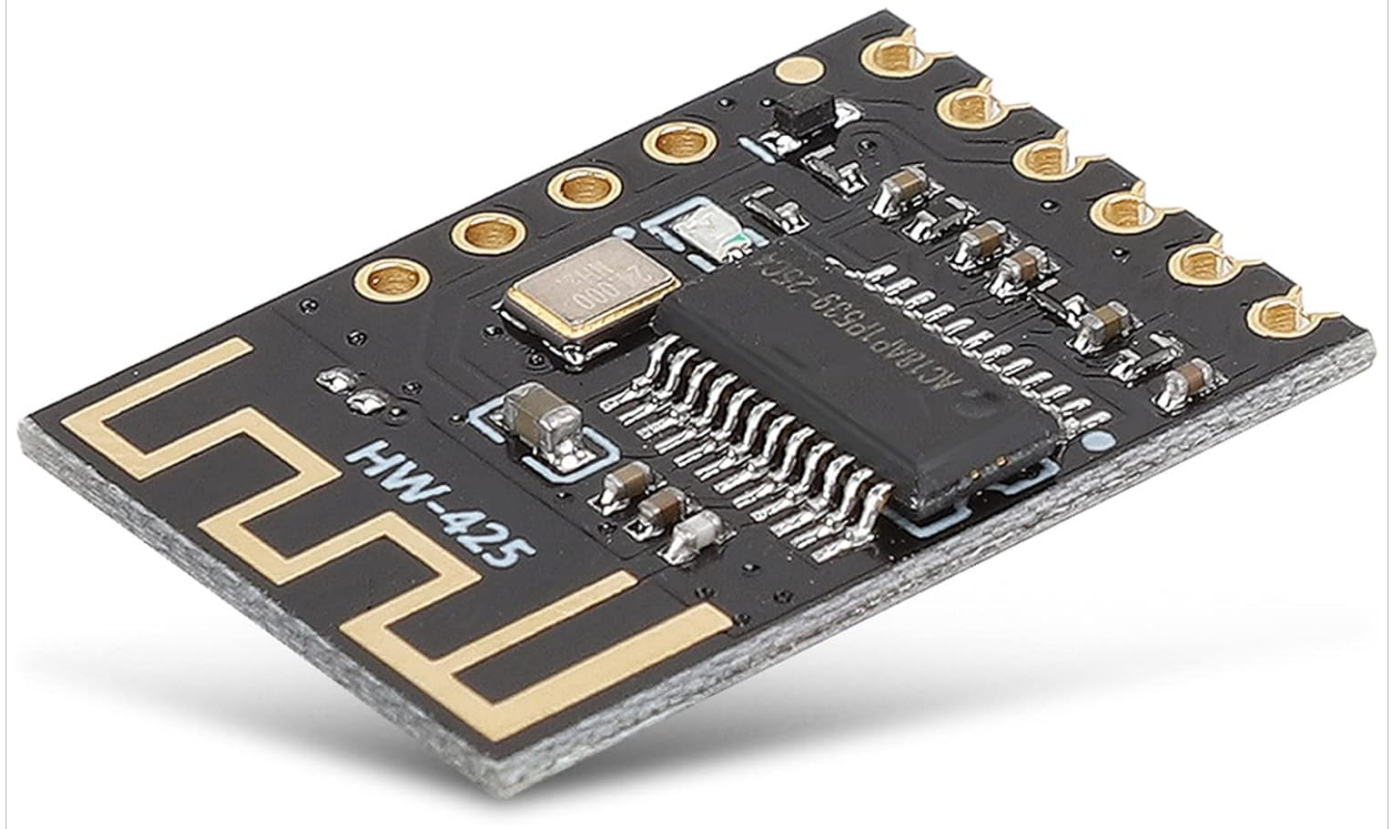


Image: Close-up of the HW-425 module, highlighting its precise cuts and interfaces for integration.

## OPERATING INSTRUCTIONS

1. **Power On:** Once the module is correctly wired and powered, it will automatically enter pairing mode.
2. **Pairing:** On your device (e.g., smartphone, tablet), search for available wireless devices. The module will typically appear as "HW-425" or a similar identifier. Select it to pair.
3. **Audio Playback:** After successful pairing, any audio played on your connected device will be transmitted wirelessly to the HW-425 module and output through its audio pins.
4. **Connection Range:** Maintain the connected device within approximately 20 meters (66 feet) of the module for optimal performance, especially in open environments. Obstacles may reduce this range.

# DUAL CHANNEL STEREO LOSSLESS PLAYBACK

Widely used in a variety of speakers DIY modification.

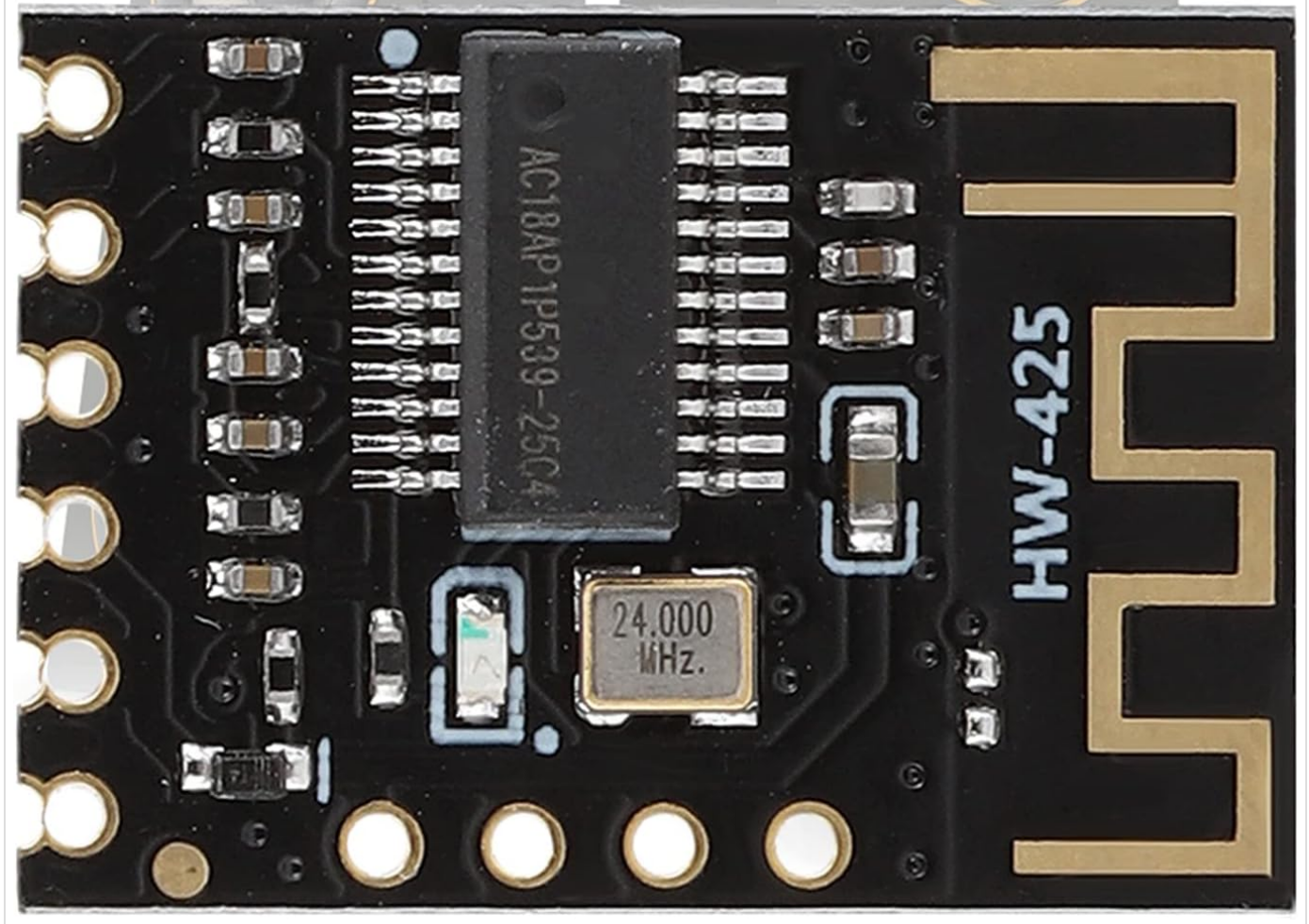


Image: The HW-425 module shown in context with speakers, illustrating its application in dual-channel stereo lossless playback.

## MAINTENANCE

The HW-425 Wireless Audio Module requires minimal maintenance. Follow these guidelines to ensure longevity:

- **Cleaning:** Use a dry, soft cloth to gently clean the module if necessary. Avoid using liquids or abrasive cleaners.
- **Environment:** Operate the module in a dry environment, away from extreme temperatures, humidity, and direct sunlight.
- **Physical Protection:** Ensure the module is securely mounted and protected from physical impact or excessive vibration.

# HIGH QUALITY MATERIALS

Effectively avoid corrosion and wear and durable use.

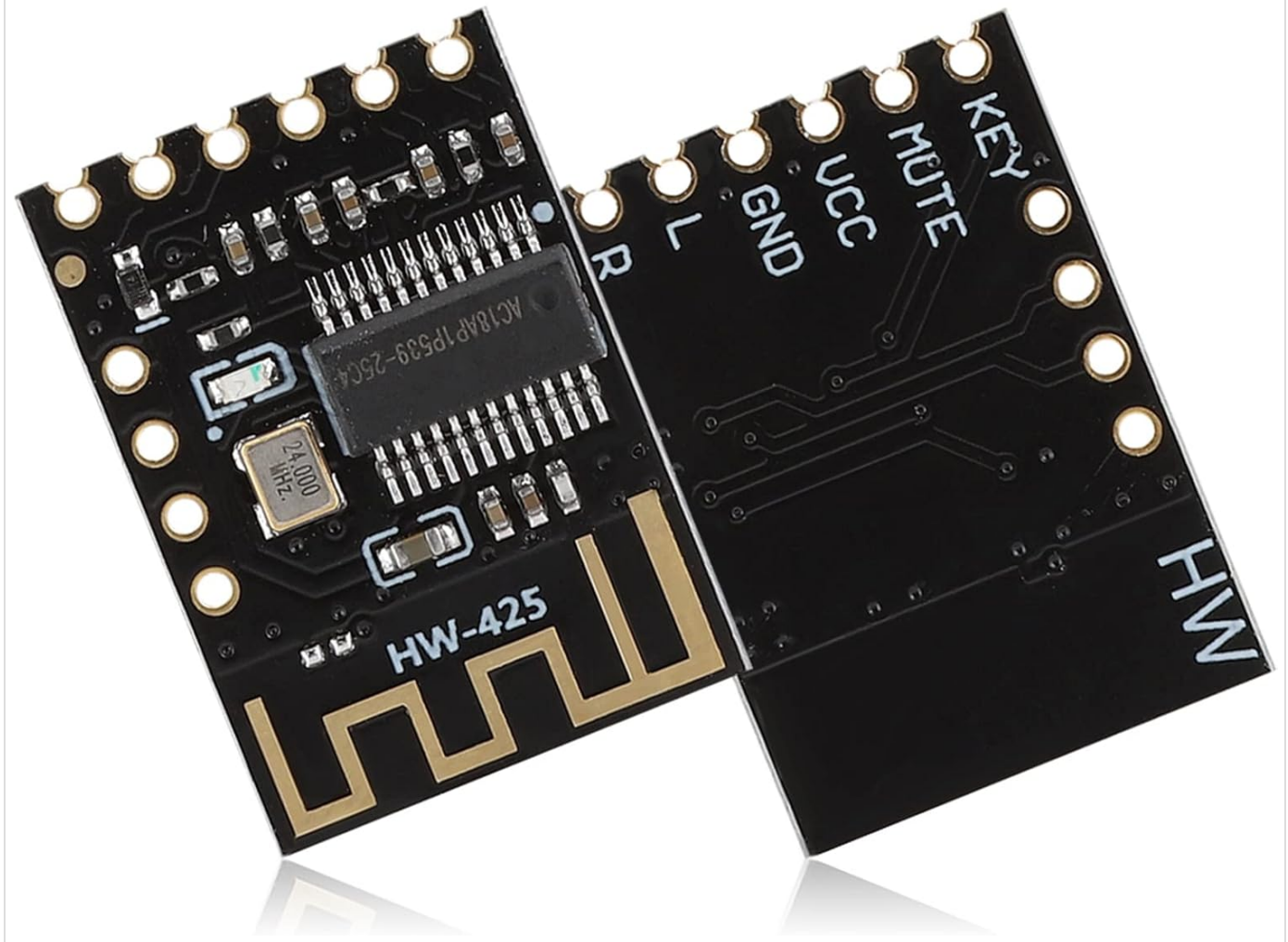


Image: A close-up of the HW-425 module, emphasizing its construction from high-quality materials designed for durability.

## TROUBLESHOOTING

| Problem                 | Possible Cause  | Solution  |
|-------------------------|---|---|
| No power                | Incorrect power supply voltage or polarity; loose connection.           | Verify 5V DC power supply. Check VCC and GND connections for correct polarity and secure fit.   |
| Cannot pair with device | Module not in pairing mode; device too far; interference.               | Ensure module is powered on. Bring device closer to the module. Restart both the module and the device. Check for other wireless devices causing interference.      |
| No audio output         | Incorrect audio wiring; amplifier/speaker issue; device volume too low. | Check L, R, and GND audio connections to the amplifier/speakers. Ensure amplifier/speakers are powered on and functioning. Increase volume on the connected device. |

|                                      |  |  |
|--------------------------------------|--|--|
| Poor audio quality or disconnections | Device too far; obstacles between device and module; interference. | Reduce distance between device and module. Remove obstacles. Minimize other wireless activity in the area. |
|--------------------------------------|--|--|

## WARRANTY AND SUPPORT

---

For warranty information or technical support, please contact LICAEVEY customer service through the retailer where the product was purchased. Please have your model number (HW-425) and purchase date available when contacting support.

**Manufacturer:** LICAEVEY

**Model Number:** LICAEVEYvbo76ygsrq (Internal reference)