

ATUMTEK ATYK199

ATUMTEK Wireless Camera Remote Shutter

MODEL: ATYK199

Introduction

Thank you for choosing the ATUMTEK Wireless Camera Remote Shutter. This device is designed to provide a convenient and hands-free way to capture photos and videos with your iPhone or Android smartphone. Featuring advanced Bluetooth 5.2 technology, it ensures a stable connection and quick response for all your photography needs. Please read this manual carefully to ensure proper use and optimal performance.

Product Overview

The ATUMTEK Wireless Camera Remote Shutter is a compact and portable device that enhances your mobile photography experience. It allows you to trigger your smartphone's camera from a distance, perfect for selfies, group photos, and stable video recording.

Compact and Portable



Weight: **0.5oz / 14g**

Image: Two ATUMTEK Wireless Camera Remote Shutters, one black and one white, with wrist straps.

Key Features:

- **Advanced Bluetooth 5.2 Technology:** Ensures a fast, stable, and zero-delay connection up to 10 meters (33 feet).
- **Extended Compatibility:** Works with most Android and Apple smartphones.
- **Long-Life Button Battery:** Powered by a CR2032 battery (210mAh) capable of capturing over 20,000 photos.
- **Compact and Portable Design:** Small dimensions (48.5mm x 33.7mm x 12.5mm) and lightweight (1.44 ounces) for easy carrying.
- **Detachable Wrist Strap:** Provides added security and prevents loss.

Package Contents

Your ATUMTEK Wireless Camera Remote Shutter package includes the following items:

Liberate Your Hands with the Bluetooth Remote Control



Before use



After use

Image: The package includes two remote shutters (black and white), two wrist straps, and a user manual.

- 2 x ATUMTEK Wireless Camera Remote Shutters (one black, one white)
- 2 x Detachable Wrist Straps
- 1 x User Manual

Setup and Pairing

Follow these steps to pair your ATUMTEK Wireless Camera Remote Shutter with your smartphone:

1. **Power On:** Locate the ON/OFF switch on the side of the remote control. Slide the switch to the "ON" position. The indicator light on the remote will flash, indicating it is in pairing mode.
2. **Enable Bluetooth:** On your smartphone, go to your device's "Settings" and enable Bluetooth.
3. **Search for Device:** In the Bluetooth settings, your phone will search for available devices. Look for "ATUMTEK" in the list.
4. **Connect:** Tap on "ATUMTEK" to connect. Once connected, the indicator light on the remote will turn off, and your phone will show "Connected" next to the device name.

Works Seamlessly with Almost All Android and iOS Devices



Image: A three-step visual guide showing how to turn on the remote, enable Bluetooth on an iPhone, and connect to "ATUMTEK".

Note for Android Users: Some Android phones may require an additional setting adjustment. If the remote does not function correctly after pairing, open your camera app, go to "Camera settings," find "Shooting methods," and then select "Press Volume buttons to" and choose "Take picture or record video."



Image: A four-step visual guide for Samsung phone users to adjust camera settings for remote shutter functionality.

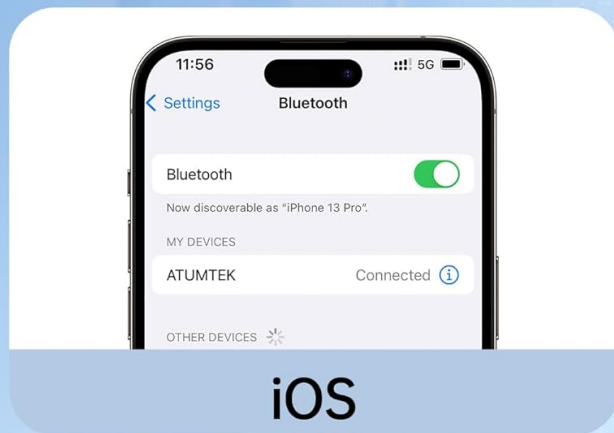
If a pop-up appears asking to "Allow access to your contacts and call history" during Bluetooth connection, you can ignore this checkbox and directly select "PAIR." The photo-taking function will work normally.

Operating Instructions

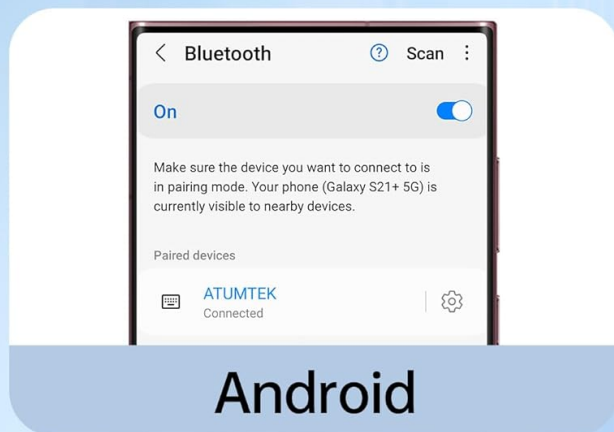
Once paired, using your ATUMTEK Wireless Camera Remote Shutter is straightforward:

1. Open your smartphone's camera application.
2. Position your phone as desired (e.g., on a tripod, selfie stick).
3. Press the large "CAMERA" button on the remote control to capture a photo or start/stop video recording.

Wide Compatibility



iOS



Android



Simply push the switch button on the side of the remote control to activate the Bluetooth function. Then, turn on your phone's Bluetooth, locate the "ATUMTEK" signal, click on it, and pair.

Image: A black ATUMTEK remote shutter with a blue indicator light, positioned next to a smartphone on a tripod, illustrating its use for remote photography.

Demonstration Videos:

Your browser does not support the video tag.

Video: A demonstration of the ATUMTEK Bluetooth Camera Remote Selfie Button in action, showcasing its ease of use for capturing photos and videos remotely.

Your browser does not support the video tag.

Video: A comprehensive review and demonstration of the ATUMTEK Camera Remote Shutter, highlighting its compatibility and functionality with both iPhone and Android phones.

Battery Information

The ATUMTEK Wireless Camera Remote Shutter is powered by a single CR2032 button battery, which is included. The battery has a capacity of 210mAh and can support over 20,000 photos.

Long-lasting Button Battery



CR2032



210mAh



20,000+ Photos

Image: A close-up of a CR2032 lithium button battery, indicating its 210mAh capacity and ability to take over 20,000 photos.

Battery Status Indicator:

Extremely Simple and User-friendly Operations

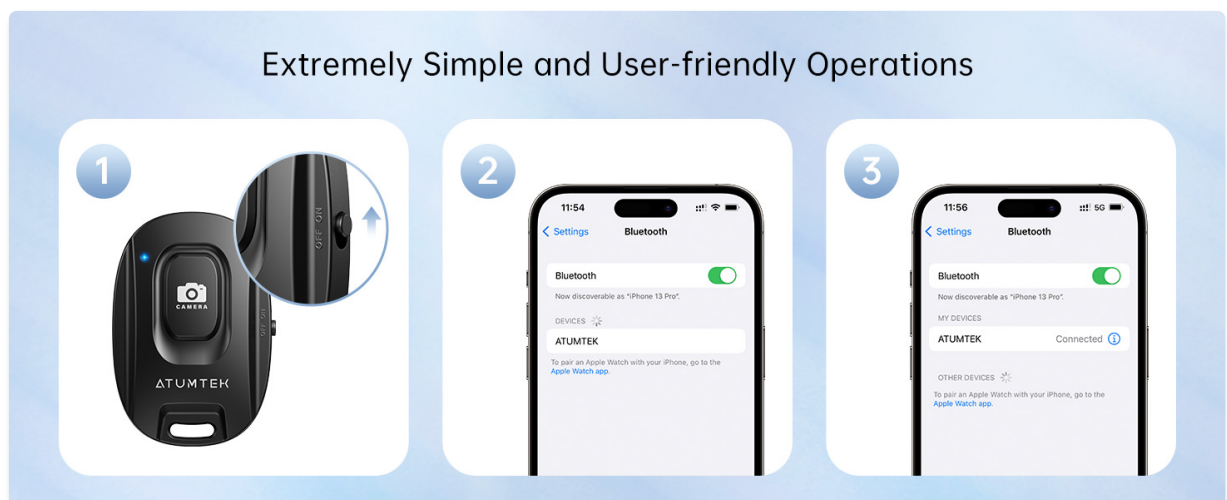


Image: Visual explanation of the remote's indicator light behavior: flashing in standby, off when connected, off after 5 minutes of no pairing (sleep mode), and off with connection loss in low battery mode.

- **Standby State:** The indicator light flashes.

- **Connection State:** The indicator light goes off.
- **Sleep Mode:** After 5 minutes of no pairing, the device enters sleep mode, and the indicator light goes off.
- **Low Battery Mode:** The indicator light turns off, and the connection is lost.

Battery Replacement:

To replace the battery, gently open the battery compartment on the back of the remote. Insert a new CR2032 battery with the positive (+) side facing up, then close the compartment securely.

Compatibility

The ATUMTEK Wireless Camera Remote Shutter is compatible with a wide range of smartphones and tablets, including:

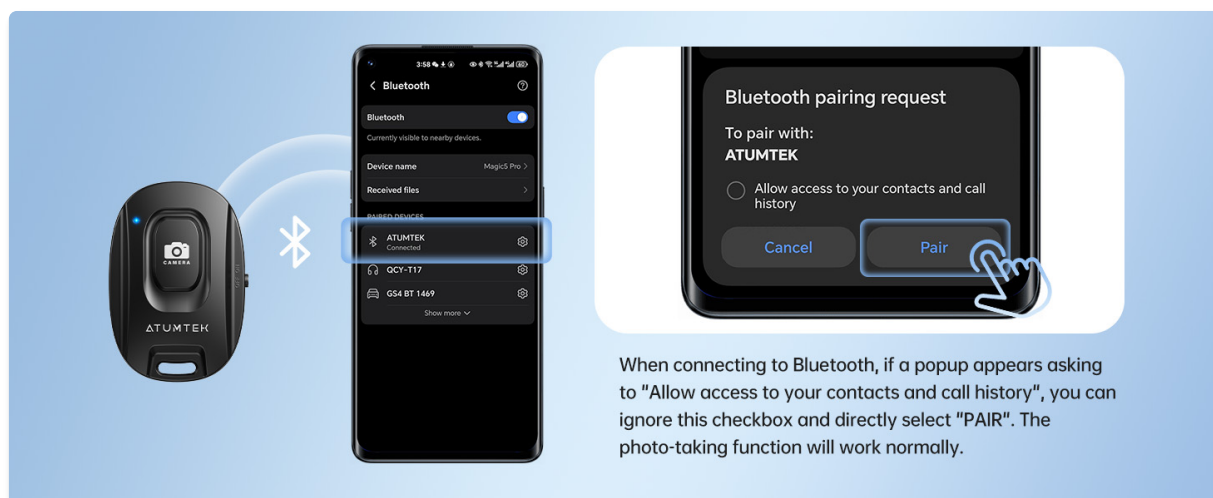


Image: The ATUMTEK remote shutter shown alongside a variety of smartphones and tablets, illustrating its broad compatibility with Android and iOS devices.

- **Apple Devices:** iPhone 6/6 Plus, 6s/6s Plus, 7/7 Plus, 8/8 Plus, X/XS/XS Max/XR, 11/11 Pro/11 Pro Max, 12/12 mini/12 Pro/12 Pro Max, 13/13 mini/13 Pro/13 Pro Max, 14/14 Plus/14 Pro/14 Pro Max, 15/15 Plus/15 Pro/15 Pro Max, 16/16 Plus/16 Pro/16 Pro Max, 17/17 Pro/17 Air/17 Pro Max, iPhone SE (2020), iPad.
- **Android Devices:** Samsung Galaxy S8/S8+, S9/S9+, S10, S20/S20+/S20 Ultra, S21/S21+/S21 Ultra, S22/S22+/S22 Ultra, S23/S23+/S23 Ultra, S24/S24+/S24 Ultra, S25/S25+/S25 Ultra, Z Flip4/Z Flip5/Z Flip6/Z Flip7, Z Fold4/Z Fold5/Z Fold6/Z Fold7, Note10, Note20. Google Pixel 6/6 Pro, 7/7 Pro, 8/8 Pro, 9/9 Pro/9 Pro XL/9 Pro Fold, 10/10 Pro/10 Pro XL/10 Pro Fold. Sony Xperia 1 II/1 III/1 IV/1 V/1 VI/1 VII, 10 II/10 III/10 IV/10 V/10 VI/10 VII, 5 III/5 IV/5 V. Motorola Edge 40/40 Pro, 50/50 Pro/50 Ultra, 60/60 Pro, 70. Razr 40/40 Ultra, 50/50 Ultra, 60/60 Ultra. OnePlus 7/7 Pro, 8/8 Pro, 9/9 Pro, 10 Pro, 11, 12, 13/13s, 15. Huawei P30/P30 Pro, P40/P40 Pro/P40 Pro+, P50/P50 Pro, P60/P60 Pro, Pura 70/Pura 70 Pro/Pura 70 Pro+/Pura 70 Ultra, Pura 80/Pura 80 Pro/Pura 80 Pro+/Pura 80 Ultra. Mate 20/Mate 20 Pro, Mate 30/Mate 30 Pro, Mate 40/Mate 40 Pro/Mate 40 Pro+, Mate 50/Mate 50 Pro, Mate 60/Mate 60 Pro/Mate 60 Pro+, Mate 70/Mate 70 Pro/Mate 70 Pro+. And other Android tablets.

Specifications

Feature	Detail
---------	--------

Brand	ATUMTEK
Model Number	ATYK199
Connectivity Technology	Bluetooth 5.2
Wireless Range	Up to 10 meters (33 feet)
Battery Type	CR2032 Button Battery (included)
Battery Capacity	210mAh (20,000+ photos)
Dimensions	48.5mm x 33.7mm x 12.5mm (1.91 x 1.33 x 0.49 inches)
Item Weight	1.44 ounces (approx. 40.8 grams)
Color	Black & White (2-pack)

Troubleshooting

- **Remote not pairing:**
 - Ensure the remote is turned ON and the indicator light is flashing.
 - Make sure Bluetooth is enabled on your smartphone and it is discoverable.
 - Try turning the remote OFF and ON again, then re-attempt pairing.
 - Check if the battery needs replacement.
- **Remote paired but not taking photos/videos:**
 - For Android devices, verify the camera settings as described in the "Setup and Pairing" section (Volume button function).
 - Ensure your camera app is open and active.
 - Some third-party camera apps may not fully support external Bluetooth shutters. Try with your phone's native camera app.
- **Connection drops frequently:**
 - Ensure the remote is within the 10-meter (33 feet) operating range.
 - Check for obstacles or interference between the remote and your phone.
 - Replace the battery if it's low.

Warranty and Support

ATUMTEK products are designed for reliability and performance. For any questions, technical support, or warranty inquiries, please refer to the contact information provided in your product packaging or visit the official ATUMTEK website. Please retain your proof of purchase for warranty claims.