

JBL JBL Vibe Beam

# JBL Vibe Beam True Wireless Earbuds Instruction Manual

Model: JBL Vibe Beam

[Overview](#) [What's in the](#)

[Box](#)

[Setup](#)

[Operating](#)

[Maintenance](#)

[Troubleshooting](#)

[Specifications](#)

[Warranty & Support](#)

## PRODUCT OVERVIEW

The JBL Vibe Beam true wireless earbuds deliver JBL Deep Bass Sound through Bluetooth 5.2 connectivity. Designed for durability, they feature an IP54 water and dust resistance rating for the earbuds and an IPX2 rating for the charging case. Enjoy clear hands-free calls with VoiceAware technology and extended listening with up to 32 hours of total battery life, including the charging case.

- **JBL Deep Bass Sound:** Experience high-quality audio with powerful bass from 8mm drivers.
- **Comfortable Fit:** Ergonomic, stick-closed design ensures a secure and comfortable fit, enhancing bass performance by excluding external sounds.
- **Extended Battery Life:** Up to 32 hours total (8 hours in earbuds + 24 hours in charging case). Speed charge provides 2 extra hours of playtime with just a 10-minute charge.
- **Hands-free Calls with VoiceAware:** Manage stereo calls on the go, with VoiceAware allowing you to control how much of your own voice you hear.
- **Water and Dust Resistant:** IP54-certified earbuds and IPX2 charging case offer protection against water and dust for various environments.



Image: JBL Vibe Beam True Wireless Earbuds in blue, showcasing their sleek design.

## WHAT'S IN THE BOX

---

The JBL Vibe Beam package includes the following items:

- 1 x JBL Vibe Beam earbuds
- 1 x Charging case
- 1 x Type-C to Type-A charging cable
- 1 x 3 sizes of eartips (S, M, L)
- 1 x Warranty / Warning document
- 1 x Quick Start Guide / Safety Sheet

## SETUP

---

## 1. Charging the Earbuds and Case

Before first use, fully charge your JBL Vibe Beam earbuds and charging case. The charging case provides additional battery life for your earbuds.

- Place the earbuds into the charging case.
- Connect the Type-C to Type-A charging cable to the charging case and a power source.
- The LED indicator on the case will show charging status (Red for low, Orange for medium, Green for high).
- A 10-minute speed charge provides approximately 2 hours of playtime.
- The case with earbuds will be fully charged in approximately 2 hours.



Image: JBL Vibe Beam earbuds in their charging case, illustrating the 32-hour battery life and speed charging capability.

## 2. Initial Pairing with a Device

To connect your JBL Vibe Beam earbuds to a new Bluetooth device:

1. Ensure the earbuds are charged and placed inside the charging case.
2. Open the charging case. The earbuds will automatically enter pairing mode, indicated by a flashing blue LED on the earbuds.
3. On your device (smartphone, tablet, etc.), go to Bluetooth settings and enable Bluetooth.

4. Select "JBL Vibe Beam" from the list of available devices.
5. Once connected, the LED indicator on the earbuds will turn solid blue.

**Your browser does not support the video tag.**

Video: This video demonstrates the setup, pairing, and device switching process for JBL Vibe Flex earbuds, which is similar to the JBL Vibe Beam model. It also covers troubleshooting common connection issues.

## OPERATING YOUR EARBUDS

---

### Touch Controls

The JBL Vibe Beam earbuds feature intuitive touch controls on each earbud. These controls allow you to manage various functions without needing to access your connected device.

- **Play/Pause:** Single tap on either earbud.
- **Next Track:** Double tap on the right earbud.
- **Previous Track:** Triple tap on the right earbud.
- **Volume Up:** Single tap on the left earbud.
- **Volume Down:** Double tap on the left earbud.
- **Answer/End Call:** Single tap on either earbud.
- **Reject Call:** Press and hold on either earbud.
- **Activate Voice Assistant (Siri, Google Assistant, Bixby):** Triple tap on the left earbud.

### JBL Headphones App

Enhance your listening experience by downloading the JBL Headphones App. The app allows for advanced customization:

- **Equalizer (EQ) Settings:** Adjust audio frequencies to your preference or choose from preset modes (e.g., Jazz, Vocal, Bass, Extreme Bass).
- **Custom Touch Controls:** Personalize the touch functions of your earbuds.
- **Ambient Sound Control:** Toggle between Active Noise Cancelling (ANC) and Ambient Aware/TalkThru modes.
- **VoiceAware:** Adjust the level of your own voice heard during calls.

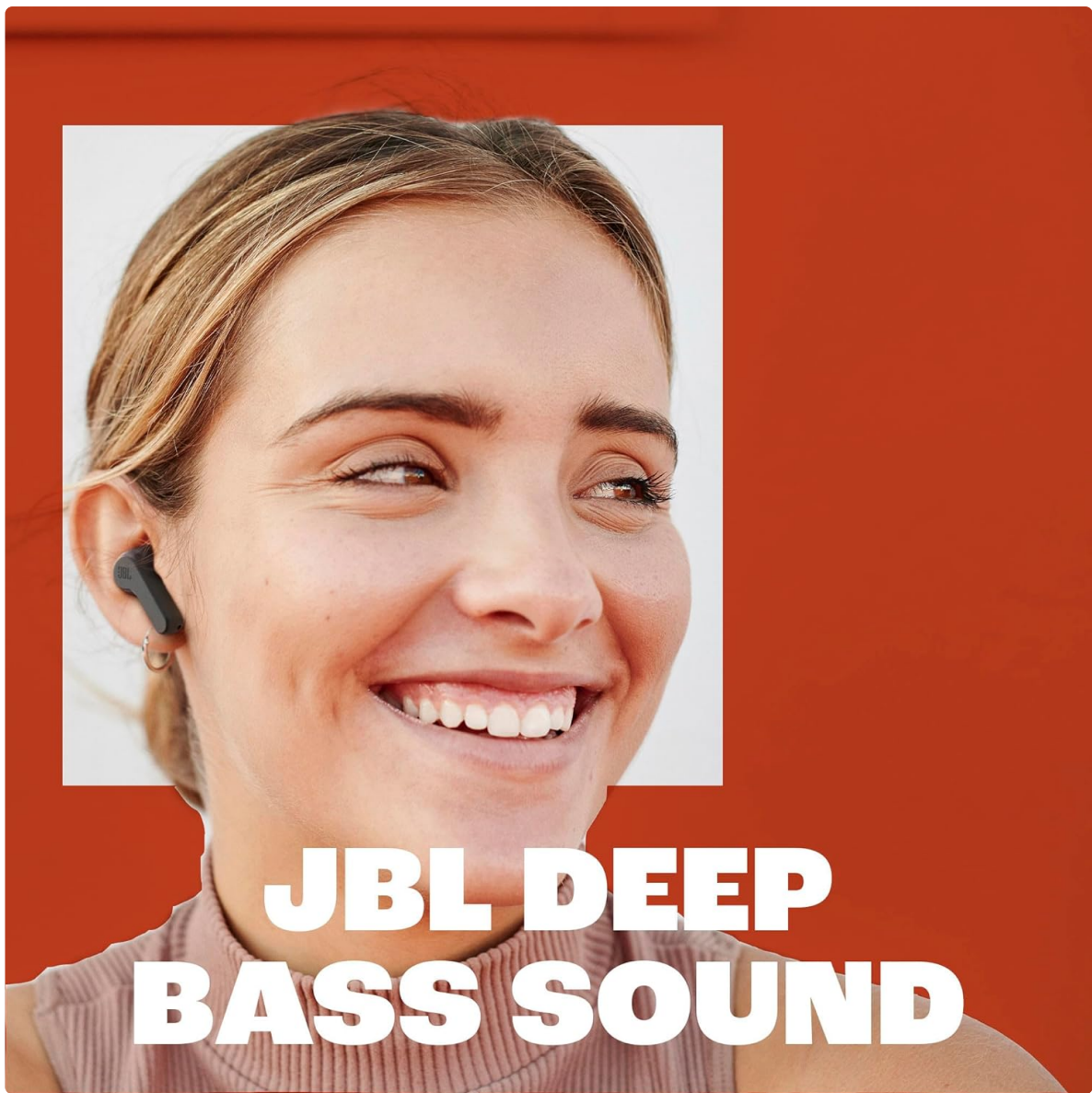


Image: Graphic highlighting JBL Deep Bass Sound, a core feature of the earbuds.

### **Ambient Sound Control and VoiceAware**

- **Active Noise Cancelling (ANC):** Reduces external noise for an immersive audio experience.
- **Ambient Aware:** Allows you to hear your surroundings while still enjoying your music, useful for safety in busy environments.
- **TalkThru:** Lowers music volume and amplifies speech, enabling quick conversations without removing earbuds.
- **VoiceAware:** During hands-free calls, this feature lets you control the amount of your own voice that is fed back into the earbuds, improving call clarity and comfort.



Image: JBL Vibe Beam earbuds emphasizing their comfortable fit for all-day wear.

## MAINTENANCE

---

Proper maintenance ensures the longevity and optimal performance of your JBL Vibe Beam earbuds.

- **Cleaning:** Regularly clean the charging contacts on both the earbuds and inside the charging case using a dry, soft cotton swab to ensure proper charging.
- **Eartips:** Remove and clean the silicone eartips with water and mild soap. Ensure they are completely dry before reattaching.
- **Storage:** When not in use, always store the earbuds in their charging case to protect them from dust, moisture, and physical damage.
- **Water and Dust Resistance:** While the earbuds are IP54-rated and the case is IPX2-rated, they are not waterproof. Avoid submerging them in water or exposing them to heavy rain. Dry them thoroughly if they get wet.

## TROUBLESHOOTING

If you encounter issues with your JBL Vibe Beam earbuds, try the following steps:

- **No Sound/Intermittent Audio:**
  - Ensure earbuds are charged.
  - Check Bluetooth connection on your device. Try disconnecting and reconnecting.
  - Move closer to your device to avoid interference.
  - Try playing audio from a different app or source.
- **Pairing Issues:**
  - Ensure Bluetooth is enabled on your device and the earbuds are in pairing mode (flashing blue LED).
  - Forget "JBL Vibe Beam" from your device's Bluetooth list and try pairing again.
  - If connecting to a new device, ensure the earbuds are disconnected from any previous devices.
- **Factory Reset:**

If other troubleshooting steps fail, you can perform a factory reset:

  1. Place both earbuds back into the charging case.
  2. Open the charging case.
  3. On one earbud, tap 3 times and then press and hold on the third tap for 5 seconds. You should hear a power off sound and see a light flashing.
  4. Repeat for the other earbud.
  5. Place both earbuds back into the case and close it.
  6. Open the case again and try to pair them with your device.

Your browser does not support the video tag.

Video: This video provides detailed instructions on how to set up, pair, switch devices, operate, and troubleshoot common issues with JBL Vibe Flex earbuds, applicable to the JBL Vibe Beam model.

## SPECIFICATIONS

Model Name	JBL Vibe Beam
Brand	JBL
Connectivity Technology	Bluetooth 5.2
Audio Driver Type	Dynamic Driver (8mm)
Battery Life	Up to 32 Hours (8h earbuds + 24h case)
Charging Time	10 minutes for 2 hours playtime (speed charge)
Water Resistance (Earbuds)	IP54

<b>Water Resistance (Charging Case)</b>	IPX2
<b>Control Method</b>	Touch
<b>Special Features</b>	True Wireless, Long Battery Life, VoiceAware, JBL Deep Bass Sound
<b>Item Weight</b>	2.89 ounces

## WARRANTY & SUPPORT

---

Your JBL Vibe Beam earbuds come with a manufacturer's warranty. Please refer to the "Warranty / Warning" document included in your package for detailed terms and conditions.

For further support, product registration, or to download the JBL Headphones App, please visit the official JBL website or contact their customer service.

You can also find additional information and support through the JBL Headphones App, available on Google Play and the App Store.