

JLDP.15.008.102 CONTROL UNIT CU358-4

User Manual for Replacement Adjustable Bed Remote Control

Model: JLDP.15.008.102 CONTROL UNIT CU358-4

1. INTRODUCTION

This manual provides essential information for the proper setup, operation, and troubleshooting of your replacement remote control for adjustable bed bases. This remote is specifically designed for use with the OKIN JLDP.15.008.102 Control Unit CU358-4. Please ensure your existing control unit matches this model for proper functionality.



Figure 1: Front view of the replacement remote control, showing various buttons for bed adjustments and massage functions.

2. COMPATIBILITY AND PRE-PURCHASE VERIFICATION

It is critical to verify compatibility before using this replacement remote. This remote is only suitable for the OKIN JLDP.15.008.102 Control Unit CU358-4. If your control unit or old remote does not match, this remote will not function correctly.

Before purchasing or attempting to pair, please troubleshoot your control box and verify the product number of your old remote control. This number is often found in the battery compartment of the old remote or on the control box itself.

Important Note:

Before placing your order please provide us with clear pictures of your control box and old remote (front & back) in order to match the correct remote to your bed, like this:

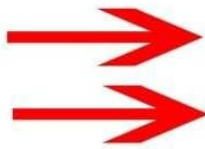


Figure 2: Visual guide for identifying your control box and old remote for compatibility verification. Ensure your control box model matches JLDP.15.008.102 CU358-4.

3. SETUP AND PAIRING INSTRUCTIONS

This section details the steps required to install batteries and pair your new remote control with your adjustable bed base.

3.1 Battery Installation

The remote requires 2 AAA batteries (not included). To install:

1. Locate the battery compartment on the back of the remote control.
2. Slide the battery cover off.
3. Insert 2 AAA batteries, ensuring correct polarity (+/-).
4. Replace the battery cover securely.

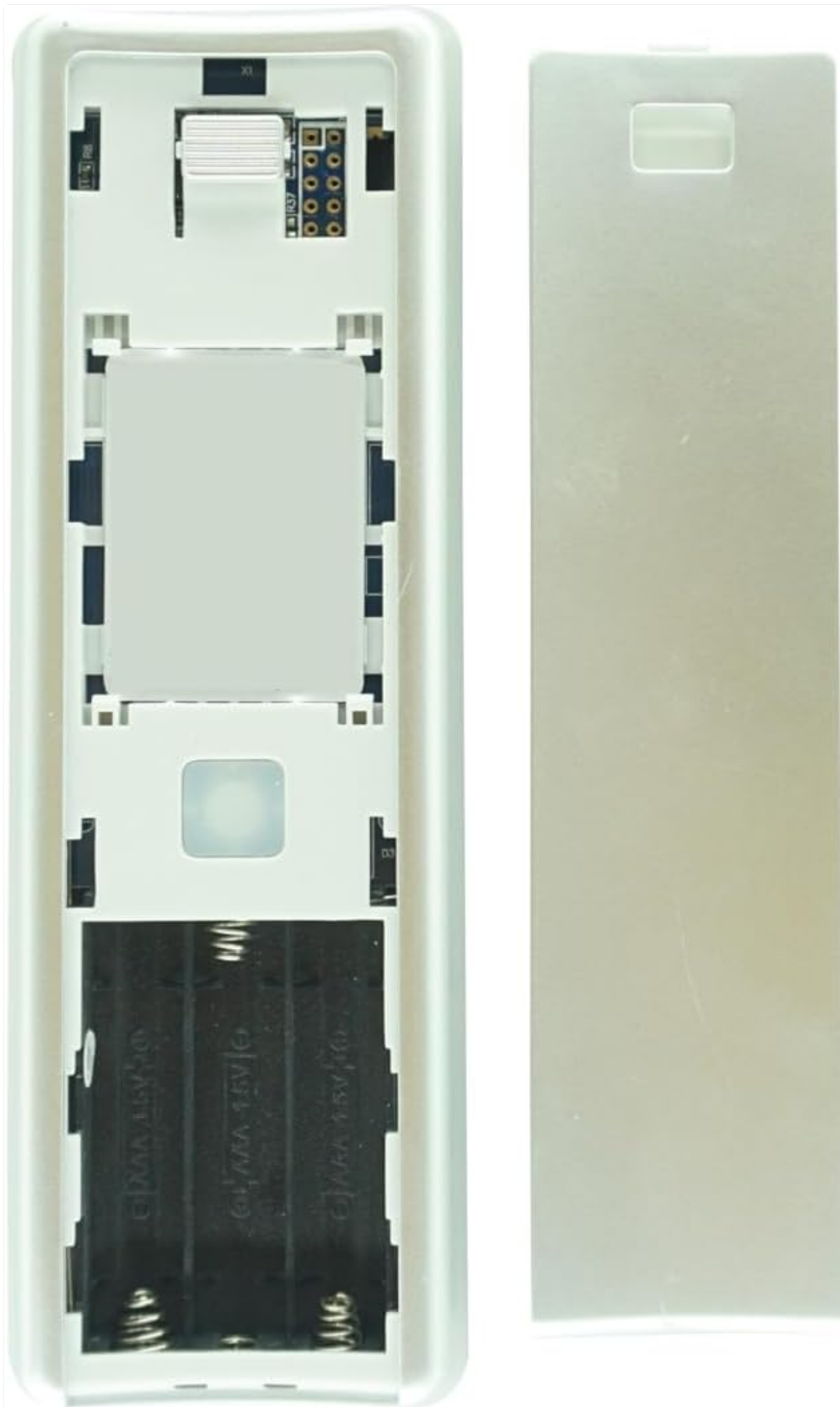


Figure 3: Rear view of the remote control with the battery cover removed, illustrating the battery compartment for AAA battery insertion.

3.2 Pairing Method

Follow these steps carefully to pair your remote control with the adjustable bed base. The original remote that came with the box is already paired. If you are using a replacement, follow these steps:

1. **Step 1:** Unplug the power cord of the adjustable bed base from the electrical outlet.
2. **Step 2:** Wait approximately 5 seconds, then plug the power cord back into the outlet.
3. **Step 3:** Within 10 seconds of plugging the power cord back in, locate the PAIR button on the back of

the remote control.

- Step 4:** Press and hold the PAIR button on the remote. The PAIR button will illuminate blue and begin flashing.
- Step 5:** Continue holding the PAIR button until the LED light on the control box goes out.
- Step 6:** Release the PAIR button. The remote is now paired to the adjustable base.
- Step 7:** Test all remote functions to ensure successful pairing.

Note: Some bed bases may have an alternative pairing process involving a "Power Down Box" or a "Reset/Pairing" button on the control box. Refer to your bed base's specific manual for additional pairing instructions if the above method is unsuccessful.

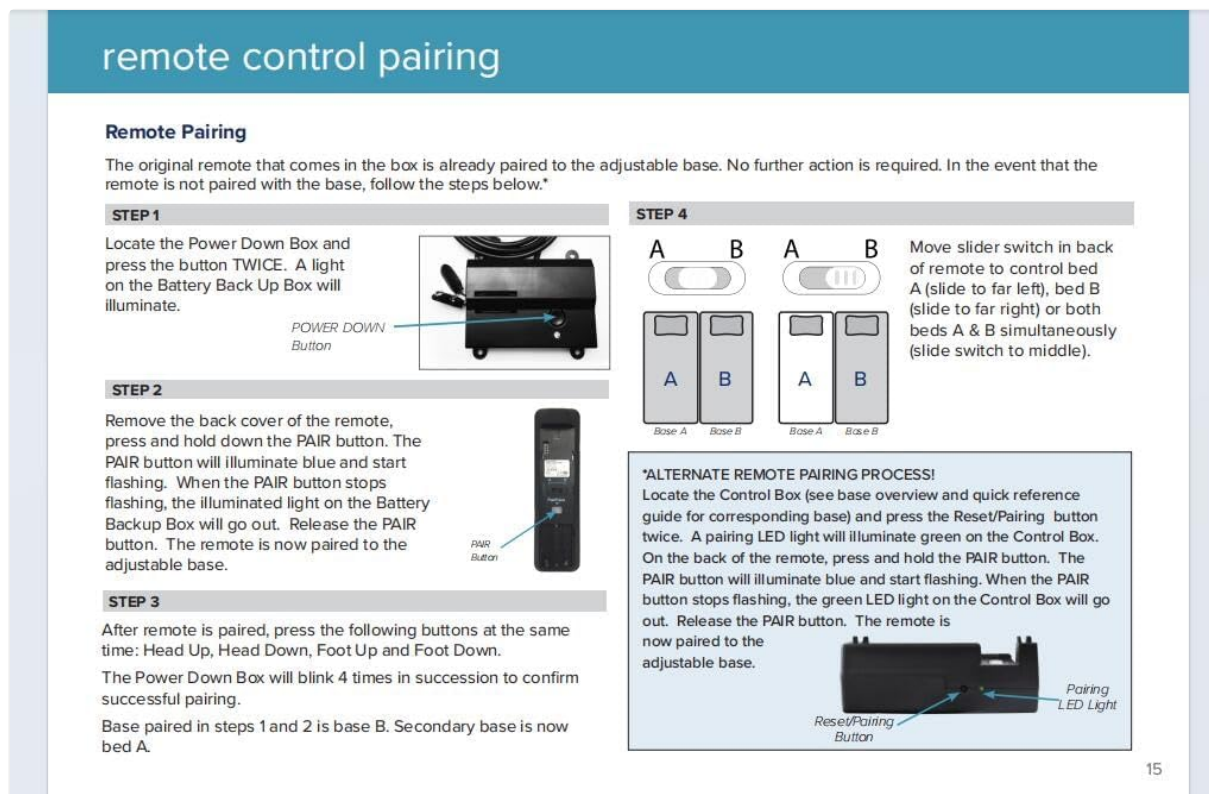


Figure 4: Visual guide for remote control pairing, including alternative methods involving the power down box and reset/pairing button on the control unit.

4. OPERATING THE REMOTE CONTROL

Once paired, the remote control allows you to adjust your adjustable bed base. The buttons on the remote typically include:

- **Head Up/Down:** Adjusts the head section of the bed.
- **Foot Up/Down:** Adjusts the foot section of the bed.
- **Flat:** Returns the bed to a flat position.
- **Zero G:** Activates the "Zero Gravity" preset position.
- **Massage (if applicable):** Controls massage functions, including intensity and timer settings (e.g., 10 min, 20 min, 30 min).
- **Light (if applicable):** Controls under-bed lighting.

Press the desired button to activate the corresponding function. Release the button when the bed reaches the desired position.

5. MAINTENANCE

5.1 Battery Replacement

Replace batteries when the remote's indicator light (if present) dims or when the remote becomes unresponsive. Always use new AAA batteries and dispose of old batteries responsibly.

5.2 Cleaning

Wipe the remote control with a soft, dry cloth. Do not use liquid cleaners or abrasive materials, as they may damage the remote's surface or internal components.

6. TROUBLESHOOTING

Problem	Possible Cause	Solution
Remote not responding.	Low or dead batteries.	Replace batteries with new AAA batteries.
Remote not responding.	Remote is not paired with the bed base.	Refer to Section 3.2 "Pairing Method" and re-attempt pairing.
Remote not responding.	Incorrect control unit model.	Verify your bed's control unit is JLDP.15.008.102 CU358-4. This remote is not universal.
Bed functions intermittently.	Loose power connection to the bed base.	Ensure the power cord is securely plugged into the outlet and the bed base.

7. SPECIFICATIONS

- **Model Number:** JLDP.15.008.102 CONTROL UNIT CU358-4
- **Compatible Devices:** Adjustable bed base with OKIN JLDP.15.008.102 Control Unit CU358-4
- **Power Source:** 2 x AAA Batteries (not included)
- **Color:** Black
- **Special Feature:** Not a universal remote
- **Manufacturer:** SZHKHXD
- **Country of Origin:** China

8. WARRANTY AND SUPPORT

For any issues not covered in this manual, or for warranty inquiries, please contact the seller or manufacturer directly. Provide your product model number and a detailed description of the issue for efficient support.

Manufacturer: SZHKHXD