

CREWORKS B0CZNX678Q

CREWORKS 2L Ultrasonic Cleaner Instruction Manual

Model: B0CZNX678Q

1. INTRODUCTION

Thank you for choosing the CREWORKS 2L Ultrasonic Cleaner. This device is designed to provide efficient and thorough cleaning for a wide range of items, including jewelry, glasses, watches, and various small parts. Utilizing ultrasonic waves, it offers a superior cleaning experience compared to traditional methods, reaching intricate surfaces and tight corners. This manual will guide you through the setup, operation, maintenance, and troubleshooting of your new ultrasonic cleaner.

NO MORE CLEANING HEADACHES

Your Expert Solution to Stubborn Grime



Harmful Chemicals



Endless Scrubbing



Scratched Surfaces



Tight Corners

Image: The CREWORKS 2L Ultrasonic Cleaner, highlighting its ability to eliminate cleaning difficulties for various items.

2. SAFETY INSTRUCTIONS

Please read all safety instructions carefully before operating the unit.

- **Do not disassemble** the unit. Unauthorized disassembly may lead to electric shock or damage to the device.
- **Do not use unattended.** Always supervise the cleaner during operation.
- Ensure there is **sufficient fluid** in the tank before operation. Operating without adequate fluid can damage the ultrasonic transducer.
- **Unplug the unit before filling or draining** the tank to prevent electrical hazards.

- Keep the unit away from water sources and do not immerse the main body in water.
- Do not touch the power plug with wet hands.
- Keep out of reach of children.
- Use only appropriate cleaning solutions. Do not use flammable, corrosive, or abrasive liquids.
- Ensure proper ventilation during use, especially if using specialized cleaning solutions.



Image: The ultrasonic cleaner showing the warning label on the lid, emphasizing critical safety precautions.

3. PRODUCT OVERVIEW

The CREWORKS 2L Ultrasonic Cleaner features a durable stainless steel tank and an intuitive control panel. Familiarize yourself with the components:

- **Stainless Steel Tank:** The main reservoir for cleaning solution and items.
- **Control Panel:** Features knobs for temperature and time settings, and toggle switches for cleaning modes.
- **Temperature Control Knob:** Adjusts heating temperature from 70°F to 210°F.
- **Time Control Knob:** Sets cleaning duration from 1 to 30 minutes.

- **Mode Switches:** Select between 'Semi-Wave' (Gentle) and 'Full Wave' (Standard) ultrasonic cleaning, and 'Degas' function.
- **Digital Display:** Shows current temperature or remaining time.
- **Handles:** Integrated handles for easy portability.
- **Lid:** Helps contain splashes and reduce noise during operation.
- **Cleaning Basket:** A removable basket for holding items during cleaning, preventing them from resting directly on the tank bottom.

CONVENIENT & EFFICIENT

Easily Adjust the Time & Temperature with Just a Quick Twist of the Knobs



Temperature Control
70–210°F



Timer Control
1–30 min.



Image: The ultrasonic cleaner positioned on a kitchen counter, highlighting its user-friendly control knobs for time and temperature.

4. SETUP

1. **Unpack:** Carefully remove the ultrasonic cleaner and all accessories from the packaging.
2. **Placement:** Place the unit on a stable, flat, and dry surface, ensuring adequate ventilation around the machine.
3. **Fill Tank:** Ensure the unit is unplugged. Fill the stainless steel tank with an appropriate cleaning solution. Do not exceed the maximum fill line. The fluid level should be sufficient to cover the items to be cleaned.
4. **Insert Basket:** Place the cleaning basket into the tank.
5. **Connect Power:** Plug the power cord into a grounded electrical outlet.

5. OPERATING INSTRUCTIONS

Follow these steps to operate your ultrasonic cleaner:

1. **Prepare Items:** Place the items to be cleaned into the cleaning basket. Ensure items are not overcrowded and are fully submerged in the cleaning solution.
2. **Close Lid:** Securely close the lid of the ultrasonic cleaner.
3. **Set Temperature (Optional):** Turn the Temperature Control Knob to your desired temperature (70-210°F). The built-in heater will begin warming the solution. Heating speeds up the cleaning process for certain contaminants.
4. **Select Mode:**
 - **Degas Mode:** Toggle the 'Degas' switch to ON. This mode quickly removes dissolved gases from the cleaning solution, enhancing cavitation efficiency and preventing oxidation of cleaned objects. Run for 1-2 minutes before cleaning, especially with fresh solution.
 - **Gentle Mode (Semi-Wave):** For delicate items like circuit boards, certain jewelry, or fragile surfaces, toggle the 'Semi-Wave' switch to ON. This halves the ultrasonic power, providing a gentler cleaning action.
 - **Standard Mode (Full Wave):** For general cleaning and stubborn grime, ensure the 'Full Wave' switch is ON (and 'Semi-Wave' is OFF). This utilizes the full ultrasonic power.

TWO CLEANING MODES

DEGASSING MODE

Easily Removes Gases from the Tank
& Prevents Oxidation of Cleaned Objects



GENTLE MODE

Effectively Reduces the Cleaning Intensity
& Protects the Surface of Valuable Items

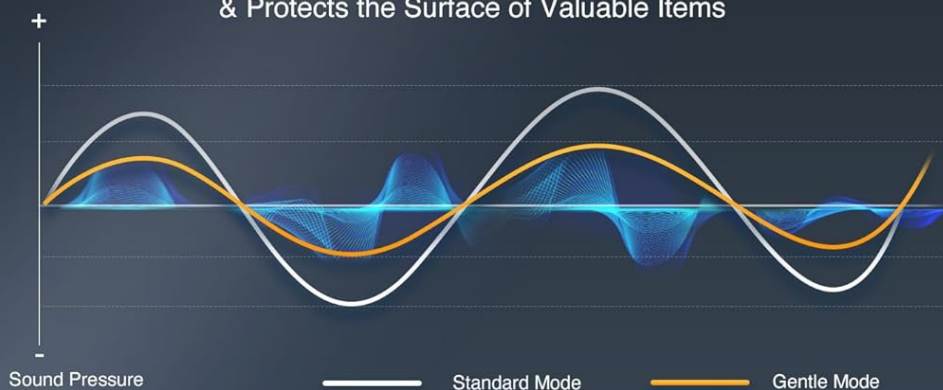


Image: Visual explanation of the Degassing Mode, which removes gases for better cavitation, and the Gentle Mode, which reduces cleaning intensity for delicate items.

5. **Set Time:** Turn the Time Control Knob to your desired cleaning duration (1-30 minutes). The digital display will show the countdown.
6. **Start Cleaning:** The unit will automatically start the cleaning process once the time is set. Ultrasonic waves will generate cavitation bubbles that dislodge dirt and grime.
7. **Finish:** Once the timer reaches zero, the cleaning cycle will stop. Unplug the unit before removing items.
8. **Rinse Items:** Carefully remove the basket and rinse the cleaned items under clean water to remove any remaining solution or loosened debris. Dry thoroughly.

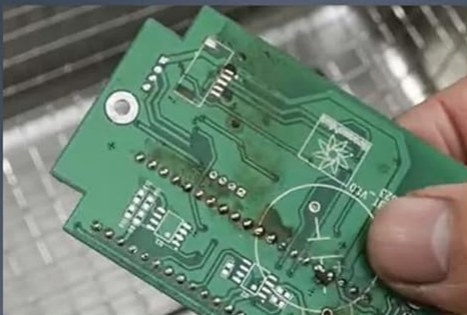
VISIBLE CLEANING EFFECT

✓ Faster Heating

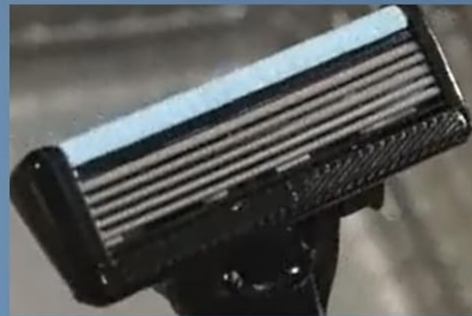
✓ Easier to Use

✓ Deeper Cleaning

BEFORE



AFTER



Note: Unauthorized use of CREWORKS' pictures will lead to legal action.

Image: Demonstrates the visible cleaning effect with before-and-after comparisons of eyeglasses, a razor, and a circuit board.

6. MAINTENANCE

Proper maintenance ensures the longevity and optimal performance of your ultrasonic cleaner:

- **Draining:** After each use, especially if the solution is dirty, unplug the unit and carefully drain the cleaning solution.
- **Cleaning the Tank:** Wipe the inside of the stainless steel tank with a soft cloth. For stubborn residue, use a mild, non-abrasive cleaner. Rinse thoroughly with clean water and dry completely.
- **Exterior Cleaning:** Wipe the exterior of the unit with a damp cloth. Do not use harsh chemicals or

immerse the unit in water.

- **Storage:** Store the cleaner in a cool, dry place away from direct sunlight and moisture when not in use. Ensure the tank is empty and dry.
- **Regular Inspection:** Periodically check the power cord for any signs of damage. If damaged, discontinue use and contact customer support.

7. TROUBLESHOOTING

If you encounter issues with your CREWORKS Ultrasonic Cleaner, refer to the following common problems and solutions:

Problem	Possible Cause	Solution
Unit does not turn on.	No power supply; Power cord not properly connected; Unit malfunction.	Check power outlet and cord connection. Ensure the power switch is ON. If problem persists, contact customer support.
Cleaning effect is poor.	Insufficient cleaning solution; Incorrect cleaning solution; Overcrowded items; Degas mode not used; Too short cleaning time.	Ensure items are fully submerged. Use appropriate solution for items. Do not overcrowd. Use Degas mode for new solutions. Increase cleaning time.
Unusual noise during operation.	Unit not on a stable surface; Tank empty or insufficient fluid; Foreign object in tank.	Place on a stable surface. Ensure sufficient fluid. Check for and remove any foreign objects.
Heating function not working.	Temperature knob not set; Heater malfunction.	Ensure temperature knob is set to a desired temperature. If problem persists, contact customer support.

If the issue persists after trying these solutions, please contact CREWORKS customer support for further assistance.

8. SPECIFICATIONS

Feature	Specification
Model	B0CZNX678Q
Brand	CREWORKS
Tank Volume	2 Liters (0.5 Gallons)
Ultrasonic Power	60W
Heating Power	100W

Feature	Specification
Ultrasonic Frequency	40 kHz
Timer Range	1-30 minutes
Temperature Range	70-210°F (20-99°C)
Tank Material	304 Stainless Steel
Overall Dimensions	6.9 x 6.5 x 8.1 inches (approx.)
Tank Dimensions	5.9 x 5.3 x 3.9 inches (approx.)
Weight	5.4 Pounds (approx.)

SPECIFICATIONS

2 L (0.5 gal.) Tank Volume

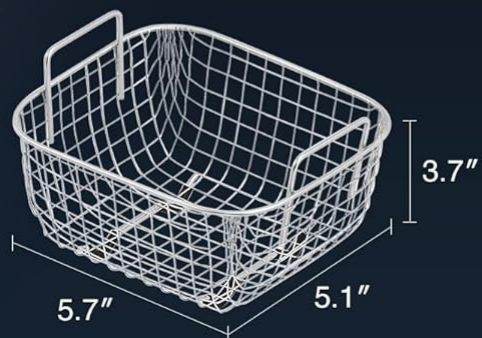
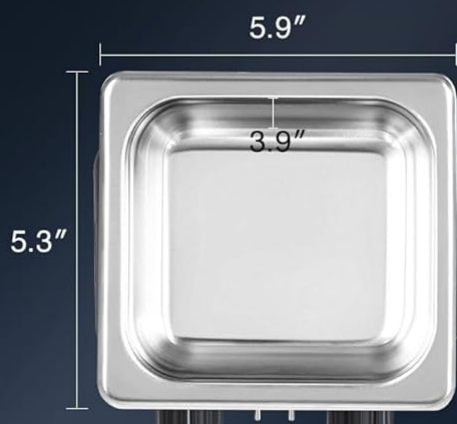


Image: Detailed specifications including the dimensions of the ultrasonic cleaner unit, its internal tank, and the cleaning basket.

9. WARRANTY AND SUPPORT

CREWORKS products are manufactured to high-quality standards. For warranty information or technical support, please refer to the warranty card included with your product or visit the official CREWORKS website. You may also contact customer service via the contact information provided on your purchase receipt or the product packaging.

Manufacturer: CREWORKS

Date First Available: June 6, 2024