

KOORUI 27N5CA

KOORUI 27N5CA 27 Inch Curved FHD Monitor User Manual

Model: 27N5CA

[Safety Information](#)

[Package Contents](#)

[Setup](#)

[Operation](#)

[Maintenance](#)

[Troubleshooting](#)

[Specifications](#)

[Warranty & Support](#)

1. PRODUCT OVERVIEW

The KOORUI 27N5CA is a 27-inch curved Full HD (1080P) monitor designed for an immersive viewing experience. Featuring a VA panel with a 1500R curvature and a 75Hz refresh rate, it delivers vibrant visuals and smooth performance. This monitor includes eye care technology to reduce eye strain and offers versatile connectivity options.

MULTIPLE CONNECTION

With both HDMI VGA and DC ports, devices like PC, Xbox, CCTV, iPad and laptop can be plugged into your monitor for complete flexibility.



Notebook



PS3/PS4



Xbox



PC



CCTV



HDMI1.4



VGA



DC

Image: KOORUI 27N5CA monitor highlighting its 27-inch size, FHD 1920x1080 resolution, 99% sRGB color gamut, 75Hz refresh rate, and VA panel.

2. SAFETY INFORMATION

Please read all safety instructions carefully before using this product. Failure to follow these instructions may result in electric shock, fire, or damage to the device.

- **Power Source:** Use only the provided power adapter. Ensure the power outlet meets the monitor's voltage requirements.
- **Ventilation:** Do not block ventilation openings. Allow adequate space around the monitor for proper airflow to prevent overheating.
- **Placement:** Place the monitor on a stable, flat surface to prevent it from falling. Avoid placing it near heat sources, direct sunlight, or in environments with high humidity or dust.
- **Cleaning:** Disconnect the power cable before cleaning. Use a soft, dry cloth. Do not use liquid cleaners or aerosol sprays.
- **Liquid Contact:** Keep the monitor away from liquids. If liquid enters the monitor, disconnect it immediately and contact support.
- **Servicing:** Do not attempt to service the monitor yourself. Refer all servicing to qualified service personnel.

3. PACKAGE CONTENTS

Verify that all items are present in your package. If any items are missing or damaged, please contact your retailer or KOORUI support.

- KOORUI 27N5CA Monitor Unit
- Monitor Stand (Base and Neck)
- Power Adapter
- HDMI 1.4 Cable
- User Manual (this document)

4. SETUP

4.1 Assembling the Stand

1. Carefully remove the monitor from its packaging, keeping it protected on a soft surface.
2. Attach the stand neck to the back of the monitor. Ensure it clicks securely into place.
3. Attach the stand base to the bottom of the stand neck. Tighten any screws if necessary to secure the base.

4.2 Connecting the Monitor

The KOORUI 27N5CA monitor supports HDMI and VGA connections.

1. **Power Connection:** Connect the power adapter to the monitor's DC input port, then plug the other end into a power outlet.
2. **Video Connection:**
 - For HDMI: Connect one end of the provided HDMI 1.4 cable to the monitor's HDMI port and the other end to the HDMI output port on your computer or device.
 - For VGA: Connect a VGA cable (not included) to the monitor's VGA port and the other end to the VGA output port on your computer or device.



Image: Rear view of the monitor illustrating the HDMI, VGA, and DC power input ports.

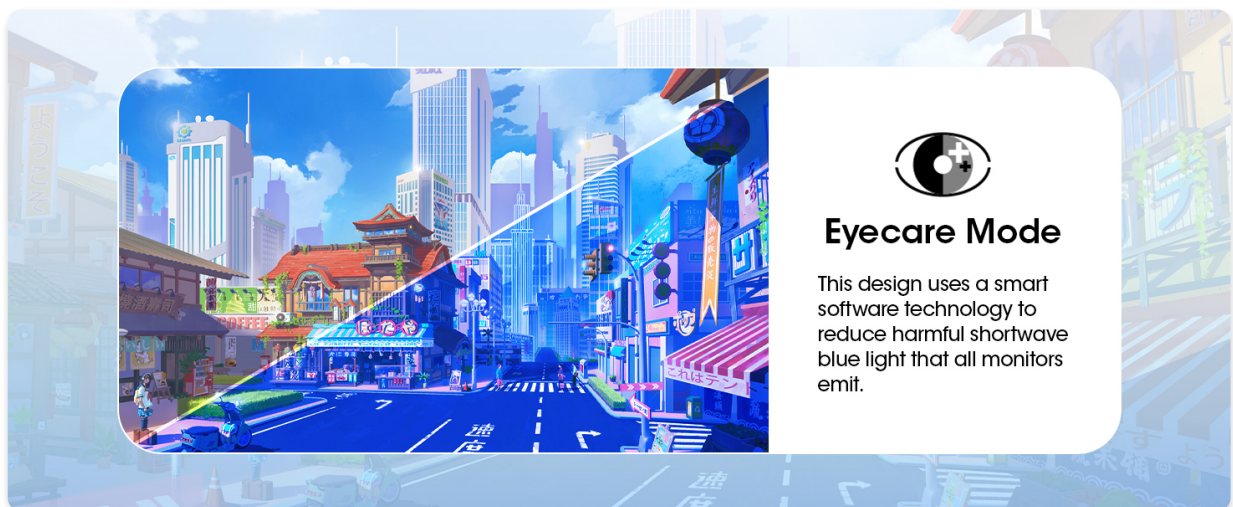


Image: Diagram demonstrating various devices such as laptops, gaming consoles (PS3/PS4, Xbox), PCs, and CCTV systems connecting to the monitor via HDMI and VGA ports.

5. OPERATION

5.1 Power On/Off

Press the power button located on the monitor to turn it on or off. The power indicator light will illuminate when the monitor is on.

5.2 On-Screen Display (OSD) Menu

The monitor features a row of buttons for navigating the OSD menu. These buttons allow you to adjust various display settings.

- **Menu Button:** Press to open the OSD menu.
- **Navigation Buttons:** Use these buttons to move through menu options.
- **Select/Enter Button:** Confirm your selection or enter a sub-menu.
- **Exit Button:** Exit the OSD menu.

5.3 Input Selection

To switch between HDMI and VGA inputs, navigate to the 'Input Source' option in the OSD menu and select your desired input.

5.4 Display Settings

Adjust the following settings via the OSD menu for optimal viewing:

- **Brightness:** Adjust the overall luminance of the screen. The monitor has a typical brightness of 250 cd/m².
- **Contrast:** Modify the difference between the brightest and darkest areas of the image. The monitor features a 3000:1 dynamic contrast ratio.
- **Color Settings:** Fine-tune color temperature, hue, and saturation. The monitor supports 16.7 million display colors and 99% sRGB color gamut.
- **Resolution:** Ensure your device is set to the monitor's native resolution of 1920 x 1080 for the clearest image.
- **Refresh Rate:** The monitor operates at a 75Hz refresh rate for smooth visuals.



Image: A close-up of the monitor screen showcasing vibrant colors, with overlays indicating 99% sRGB Color Gamut, 16.7M Display Color, and 3000:1 Contrast Ratio.

5.5 Eye Care Mode

The monitor incorporates low blue mode and flicker-free technology to reduce harmful blue light emissions and alleviate eye fatigue during prolonged use.



Image: An illustration depicting the effect of Eyecare Mode, showing a split screen where one side has a normal blue tint and the other side has reduced blue light for eye comfort.

5.6 Tilt Adjustment

The monitor stand allows for tilt adjustment from -5 degrees (forward) to 20 degrees (backward). Gently adjust the monitor panel to your preferred viewing angle.

HDMI & VGA Port Support



Image: Side view of the KOORUI monitor demonstrating its adjustable tilt feature, allowing the screen to be angled up or down.

6. MAINTENANCE

6.1 Cleaning the Screen

To clean the screen, gently wipe it with a soft, lint-free cloth. For stubborn marks, lightly dampen the cloth with water or a specialized screen cleaner. Never spray liquid directly onto the screen.

6.2 Cleaning the Casing

Wipe the monitor casing with a soft, dry cloth. Avoid using abrasive cleaners or solvents that could damage the finish.

7. TROUBLESHOOTING

If you encounter issues with your monitor, refer to the following common problems and solutions:

Problem	Possible Cause	Solution
No image on screen	Power cable disconnected; Video cable disconnected; Incorrect input source selected; Monitor is off.	Ensure power and video cables are securely connected. Press the power button. Select the correct input source via the OSD menu.
Image is flickering	Loose video cable; Interference; Graphics card issue.	Check video cable connections. Ensure no strong electromagnetic devices are nearby. Update graphics card drivers.
Colors appear incorrect	Color settings in OSD are incorrect; Graphics card settings.	Adjust color settings in the OSD menu. Check your computer's display settings.
Buttons not responding	Monitor is locked; Temporary software glitch.	Unplug the monitor from power for 30 seconds, then plug it back in.

8. SPECIFICATIONS

Feature	Detail
Model Number	27N5CA
Screen Size	27 inches
Panel Type	VA
Curvature	1500R
Resolution	1920 x 1080 (FHD)
Refresh Rate	75Hz
Aspect Ratio	16:9
Brightness	250 cd/m ²
Contrast Ratio	3000:1
Display Colors	16.7 Million
Color Gamut	99% sRGB
Viewing Angles	178° (Horizontal/Vertical)
Connectivity	1x HDMI 1.4, 1x VGA
Tilt Adjustment	-5° to 20°
Product Dimensions	21 x 9 x 14 inches (53.34 x 22.86 x 35.56 cm)
Item Weight	11.38 pounds (5.16 kg)

DESIGNED FOR OFFICE



Image: The monitor placed on a desk, illustrating its approximate width of 24.13 inches and the recommended desk space of 60 inches.

9. WARRANTY & SUPPORT

9.1 Warranty Information

The KOORUI 27N5CA monitor display screen is backed by a **1-year warranty**. Other accessories included with the monitor are covered by a **3-year warranty**.

This warranty covers manufacturing defects and malfunctions under normal use. It does not cover damage caused by misuse, accidents, unauthorized modifications, or external factors.

9.2 Customer Support

For any queries, technical assistance, or warranty claims, please contact KOORUI customer support. Refer to the contact information provided on the KOORUI official website or your purchase documentation.

When contacting support, please have your monitor's model number (27N5CA) and purchase date readily available.