

[Manuals.plus](#) /

› [Seasonic](#) /

› Seasonic Focus GX 750W Power Supply ATX 3.1 PCIe 5.1 Instruction Manual

Seasonic Focus GX-750

Seasonic Focus GX 750W Power Supply ATX 3.1 PCIe 5.1 Instruction Manual

Model: Focus GX-750 White ATX 3.1

1. PRODUCT OVERVIEW

The Seasonic Focus GX 750W Power Supply is a high-performance, fully modular unit designed to meet the demands of modern computing systems. It features ATX 3.1 and PCIe 5.1 readiness, including a native 12V-2x6 connector, making it suitable for the latest GPUs like the NVIDIA RTX 5070 Ti and AMD RX 9000 series. With 80 PLUS Gold and Cybenetics Platinum certifications, it ensures high efficiency and stable power delivery. The unit incorporates OptiSink Design for advanced heat dissipation and Hybrid Fan Control for quiet operation.



Image 1.1: Front view of the Seasonic Focus GX 750W Power Supply.

2. IMPORTANT SAFETY INFORMATION

WARNING: High voltage inside. Do not open the power supply unit. Servicing should only be performed by trained personnel.

- Ensure the power supply is correctly installed in a well-ventilated area.
- Use only the Seasonic AC power cord and modular cables provided with the unit.
- Make sure the AC input voltage is within the specified range (100-240V AC).
- Keep the power supply unit in a dry environment, away from humidity.
- This power supply unit is for integration into a computer system and not intended for external or industrial usage.

3. INSTALLATION GUIDE

Follow these steps to properly install your Seasonic Focus GX 750W Power Supply:

1. **Prepare your system:** Disconnect the AC power cord from the wall socket and the back of your old power supply. Disconnect all DC cable connectors and remove all mounting screws. Carefully remove your old PSU.
2. **Test your Seasonic PSU before installation:**
 - Plug the AC power cord into the PSU. Make sure that the AC power is coming directly from the wall outlet.
 - Connect both the 18-pin and 10-pin connectors of the motherboard cable to the PSU.
 - If your power supply features a fan control switch, set it to "Normal" Mode.

- Attach the 24-pin connector to the provided PSU Tester.
 - Turn on the power supply by setting the I/O switch to the "I" (ON) position. If the power supply fan starts spinning (or the externally attached LED light turns on), then your PSU is working.
3. **Position your PSU:** Mount the power supply with its ventilation top cover facing UPWARD. If there is enough space (at least 5 cm / 2 inches) available between the PSU ventilation top cover and the metal plate of the case, this will ensure natural heat dissipation.
 4. **Install your Seasonic PSU:** Secure all 4 mounting screws. Make sure the PSU power switch is in the "O" (OFF) position. Connect all necessary system DC cables (Motherboard, CPU, VGA, HDD, Optical Drives, etc.).

PREMIUM COMPONENTS

Japanese Capacitors

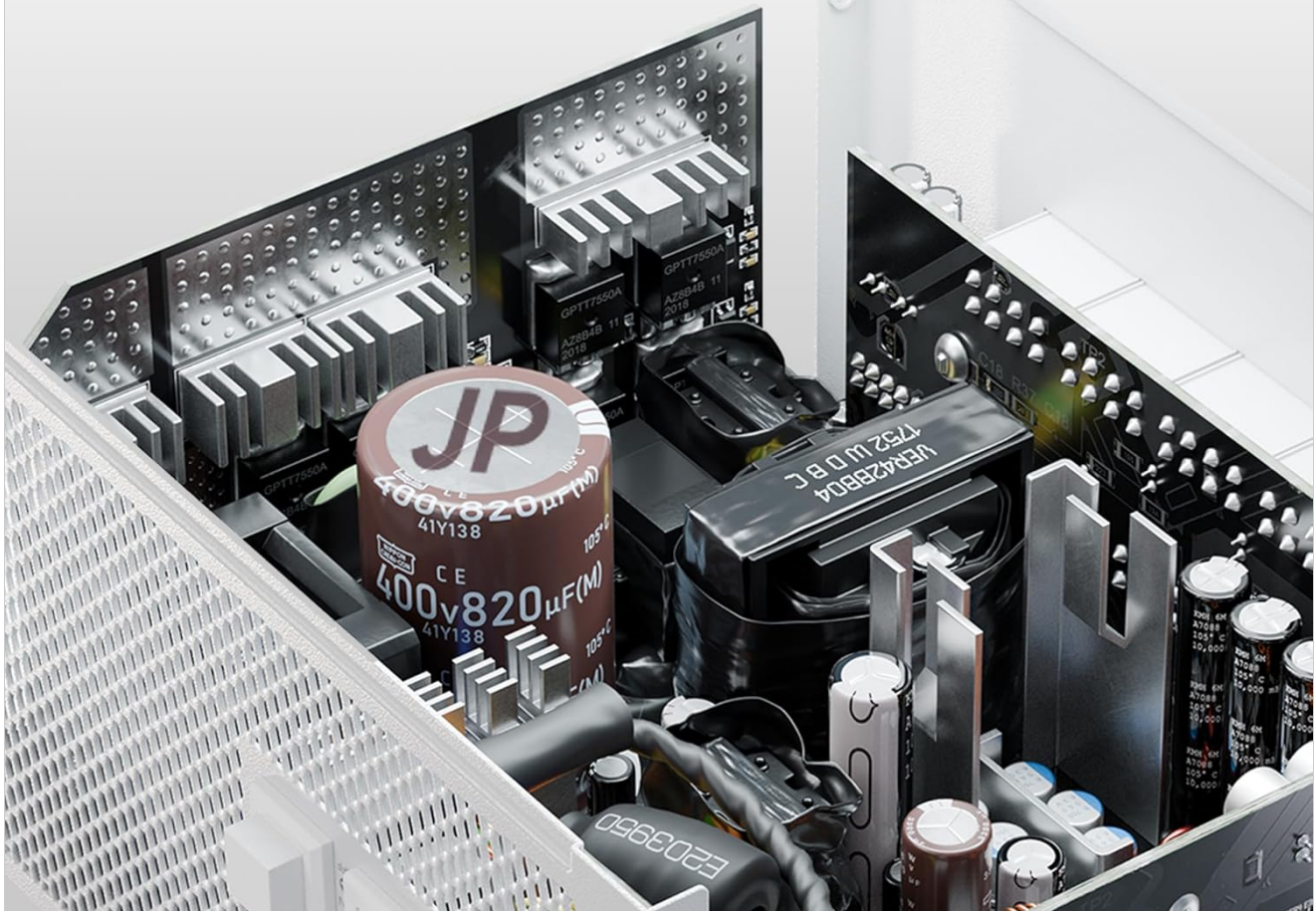


Image 3.1: Modular connector panel for the Seasonic Focus GX 750W, showing clearly labeled ports for PCIe, CPU/PCIe, MB, and Peripheral/SATA/Molex connections.

HYBRID FAN CONTROL

Intelligent Thermal Control Switch



Button Released
Fan stops at low loads



Button Pressed
Fan always on

Image 3.2: Diagram illustrating the fully modular cables included with the Focus GX 750W, including lengths for M/B 24-pin ATX, CPU 4+4-pin, PCI-E 6+2-pin, SATA, MOLEX, and 12V-2x6 12+4-pin cables.

Included Cables:

- 1x 24-pin ATX Motherboard Cable (700mm)
- 2x CPU 4+4-pin Cables (750mm)
- 2x PCI-E 6+2-pin Cables (750mm)
- 2x SATA Cables with 4 connectors each (500/150/150/150mm)
- 1x MOLEX Cable with 3 connectors (450/120/120mm)
- 1x Native 12V-2x6 12+4-pin Cable (700mm)

4. OPERATING INSTRUCTIONS

The Seasonic Focus GX 750W features Hybrid Fan Control, which intelligently manages fan speed based on system load and temperature. This ensures optimal cooling while minimizing noise.

PREMIUM-QUALITY MATERIALS

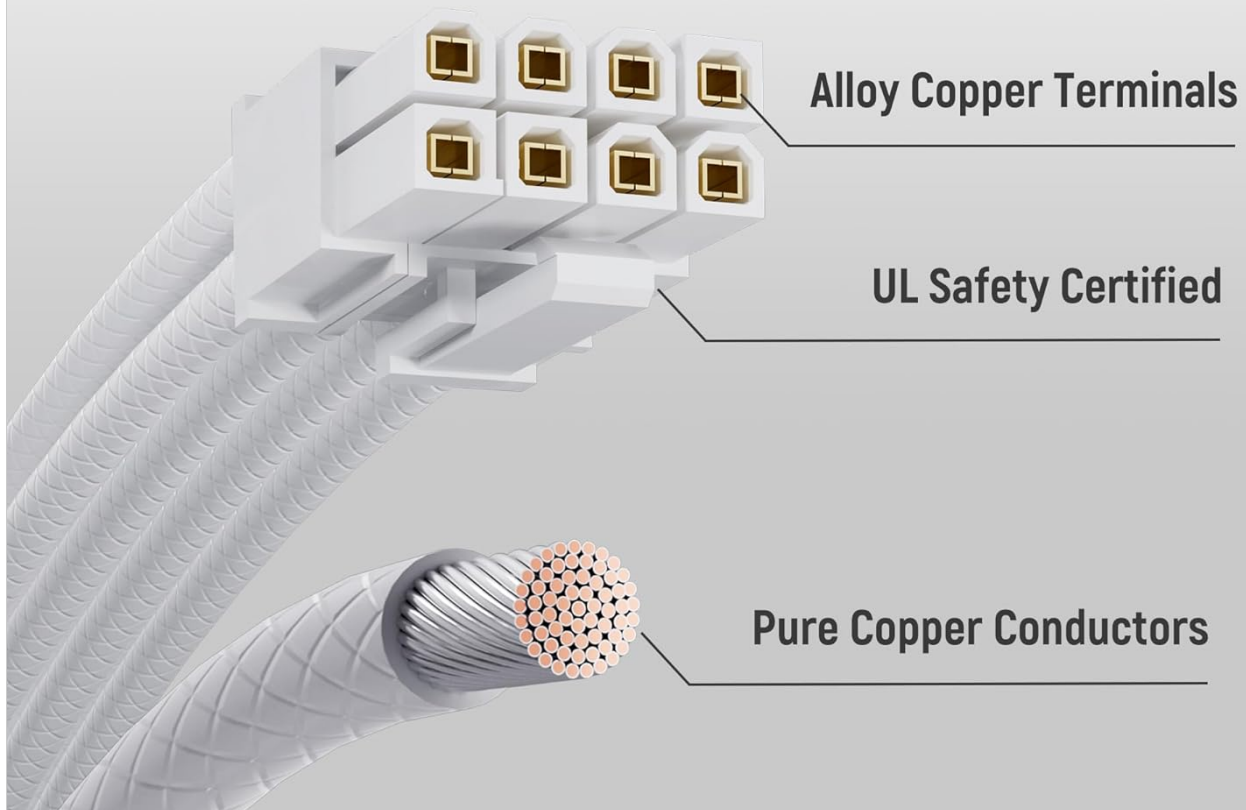


Image 4.1: Hybrid Fan Control switch on the power supply, allowing selection between Fanless Mode (button released) and Always On (button pressed).

Fan Control Modes:

- **Fanless Mode (Button Released):** At low loads (up to approximately 30% of rated load), the fan does not spin, resulting in zero noise and vibration. Your PC operates on passive cooling from the PSU.
- **Silent Mode:** As the load increases, the fan slowly ramps up at very low RPM. During gaming or moderate workloads, the fan spins quietly, providing excellent airflow while remaining inaudible inside a normal case.
- **Cooling Mode (Button Pressed):** When the system is under heavy load (e.g., high-end gaming or workstation rendering), the fan ramps up for maximum cooling. This ensures stable power delivery, safe operating temperatures, and long-term reliability.

5. MAINTENANCE

To ensure the longevity and optimal performance of your power supply, follow these maintenance guidelines:

- **Keep it Clean:** Regularly clean the exterior of the power supply and the fan grille to prevent dust buildup, which can impede airflow and reduce cooling efficiency. Use compressed air for best results.
- **Check Connections:** Periodically inspect all modular cable connections to ensure they are secure and free from damage.
- **Ensure Proper Ventilation:** Make sure your PC case has adequate airflow and that the power supply's ventilation is not obstructed.

6. TROUBLESHOOTING

If you encounter issues with your power supply, refer to the following common troubleshooting steps:

- **No Power:** Ensure the AC power cord is securely plugged into both the wall outlet and the PSU. Check the I/O switch on the PSU is in the "I" (ON) position. Test the wall outlet with another device.
- **System Instability/Crashes:** Verify all modular cables are correctly and securely connected. Ensure your system's power requirements do not exceed the PSU's capacity.
- **Fan Not Spinning (Fanless Mode):** If the Hybrid Fan Control is enabled (button released), the fan will not spin at low loads. This is normal operation. If the system is under load and the fan still doesn't spin, check the fan control switch position.
- **Unusual Noises:** If you hear abnormal noises, ensure the fan is not obstructed. If the noise persists, contact customer support.

For further assistance, please visit the [Seasonic website](#) or contact their customer support.

7. TECHNICAL SPECIFICATIONS

Feature	Specification
Model Name	Focus GX-750 White ATX 3.1
Brand	Seasonic
Output Wattage	750W
Form Factor	ATX
Efficiency	80 PLUS Gold, Cybernetics Platinum
Cooling Method	Air (135mm FDB fan with Hybrid Fan Control)
Dimensions (L x W x H)	5.5 x 5.9 x 3.4 inches (140 x 150 x 86 mm)
Item Weight	3.48 Pounds
AC Input Range	100-240V AC, 12A-6A, 50-60Hz
DC Output (+12V Rail)	70A (840W)
Protection Features	Over-power, Over-voltage, Under-voltage, Over-current, Over-temperature, Short-circuit
Certifications	cTUVus, TUV, CB, CCC, BSMI, EAC, CE, Energy Star, RoHS, WEEE, REACH, ErP Lot 6

8. PRODUCT MEDIA

Product Images:

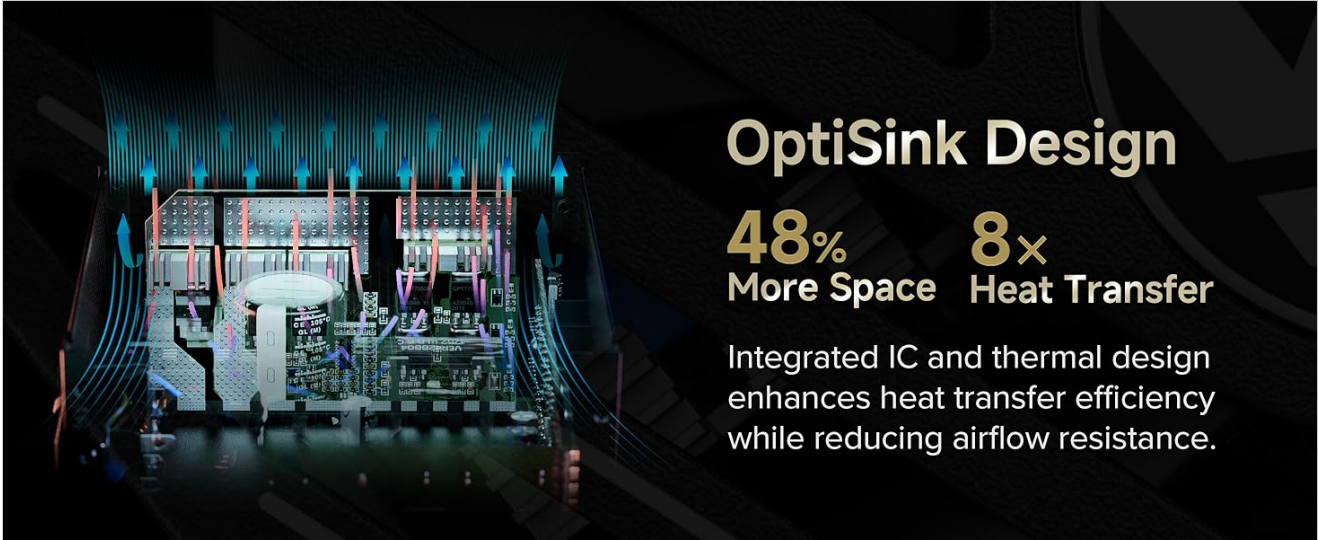


Image 8.1: Diagram illustrating the Seasonic OptiSink Design, highlighting the optimized production process and 8x increase in thermal conductivity for improved thermal performance. Heatsinks are designed to dissipate heat in any orientation.

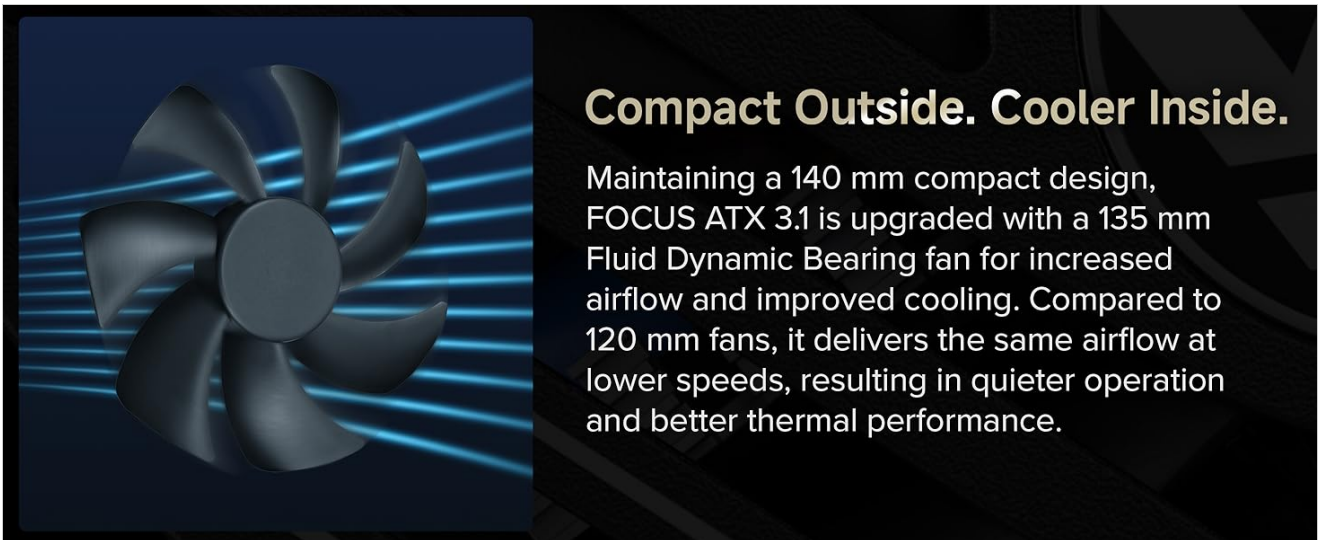


Image 8.2: Diagram showing the 135mm Fluid Dynamic Bearing fan, emphasizing its compact design for increased airflow and improved cooling, resulting in quieter operation and better thermal performance compared to 120mm fans.

FLUID DYNAMIC BEARING FAN

Smooth rotation. Lower noise. Longer life.



Image 8.3: Close-up view of the internal components, highlighting the use of premium Japanese Capacitors for enhanced stability and reliability under extreme conditions.

OPTISINK DESIGN

Advanced Heat Dissipation

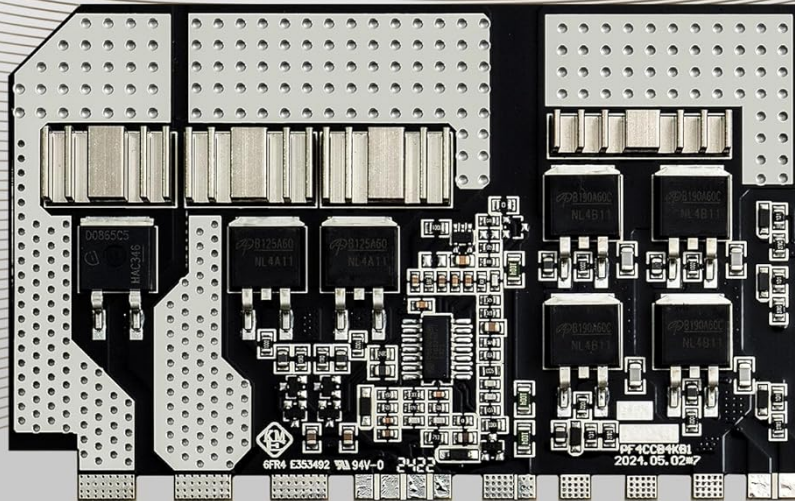


Image 8.4: Detailed view of the Fluid Dynamic Bearing (FDB) fan, which ensures smooth rotation, lower noise, and longer life for the power supply.

PSU TESTER INCLUDED

Instant Power Status Check



Image 8.5: Illustration of the premium-quality materials used in the cables, including alloy copper terminals, UL Safety Certified connectors, and pure copper conductors for reliable power delivery.

Official Product Videos:

Your browser does not support the video tag.

Video 8.1: An overview of the Seasonic FOCUS GX Power Supply, highlighting its features and design. This video is provided by MA Labs.

Your browser does not support the video tag.

Video 8.2: A detailed look at the Seasonic Focus GX-750 White ATX3 power supply, showcasing its design and components. This video is provided by MA Labs.

9. WARRANTY AND SUPPORT

The Seasonic Focus GX 750W Power Supply comes with a **10-year warranty**, reflecting Seasonic's commitment to quality and reliability. For warranty claims, technical support, or any product-related inquiries, please visit the official

Seasonic website or contact their customer service department.

Official Website: www.seasonic.com
