

[Manuals.plus](#) /

> [KOSERNT](#) /

> KOSERNT AI Language Translation Earbuds Real-Time, 144 Languages & Accents, Compatible with iOS & Android, Model Q16S AI User Manual

## KOSERNT Q16S AI

# KOSERNT AI Language Translation Earbuds

MODEL: Q16S AI - USER MANUAL

## 1. INTRODUCTION

Thank you for choosing the KOSERNT AI Language Translation Earbuds, Model Q16S AI. These earbuds are designed to provide real-time language translation across 144 languages and accents, enhancing communication for travel, business, and learning. They feature advanced AI technology for superior audio quality, noise cancellation, and seamless translation experiences. This manual provides detailed instructions for setup, operation, maintenance, and troubleshooting to ensure optimal performance of your device.

## 2. WHAT'S IN THE BOX

- 2 x Translation Earbuds
- 1 x Charging Case
- 1 x Charging Cable
- 1 x User Manual (This document)
- 1 x Box

## 3. PRODUCT FEATURES

The KOSERNT Q16S AI earbuds offer a range of advanced features:

- **AI-Powered Real-Time Translation:** Supports 144 languages and accents for instant, natural communication.
- **Superior Audio & Call Quality:** AI-optimized audio and noise-canceling for clear calls and immersive music.
- **Instant & Smooth Interpretation:** Natural interpretation technology processes voice in real-time without

pauses.

- **Extended Battery Life:** Up to 80 hours total with charging case, 6 hours per charge. Fast Type-C charging.
- **Bluetooth 5.4 Connectivity:** Ensures stable, low-latency connection with efficient energy consumption.
- **Ergonomic Open-Ear Design:** Comfortable for extended wear, reducing ear canal pressure.
- **IP68 Waterproof Protection:** Provides durability against water and dust.
- **Advanced Air Conduction Technology:** Delivers rich, leak-free sound.



Image: KOSERNT Q16S AI Translation Earbuds in their charging case, showcasing the design and digital display.

## AI Assiant

Over 200 AI Small Application

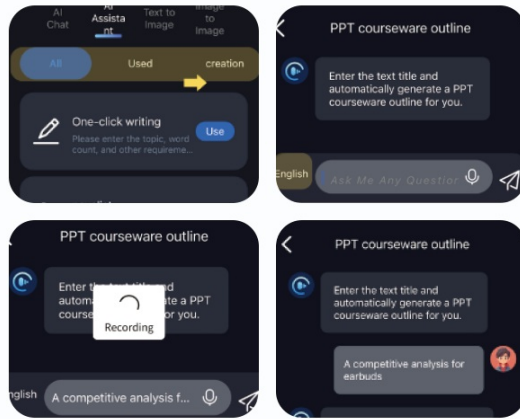


Image: Overview of key features including sound quality, air conduction, battery life, safety, comfort, and waterproofing.

## 4. SETUP GUIDE

### 4.1 Charging the Earbuds and Case

Before first use, fully charge the earbuds and the charging case. Connect the provided USB Type-C charging cable to the charging case and a compatible power source. The LED indicator on the case will show charging status. A full charge for the case and earbuds typically takes approximately 1.5 hours.

# 1.5H Fast Charging with Type-C

 **80 H**ours  
Total with Case

 **6 H**ours  
Single Playtime



Image: Battery life and charging details for the earbuds and case.

## 4.2 App Installation and Connection

The KOSERNT Q16S AI earbuds require the "NebulaBuds" application for full functionality, especially for translation features. Follow these steps to connect:

1. **Download the "NebulaBuds" App:** Scan the QR code found in the charging case or the physical user manual, or search for "NebulaBuds" in your device's app store (iOS/Android).

2. **Enable Bluetooth:** Turn on Bluetooth on your smartphone or tablet.
3. **Open the App:** Launch the "NebulaBuds" app. It will prompt you to allow Bluetooth access and discover devices. Grant the necessary permissions.
4. **Connect Earbuds:** The app will automatically detect the "YYK-Q16S AI" earbuds. Select them from the list and confirm the connection.

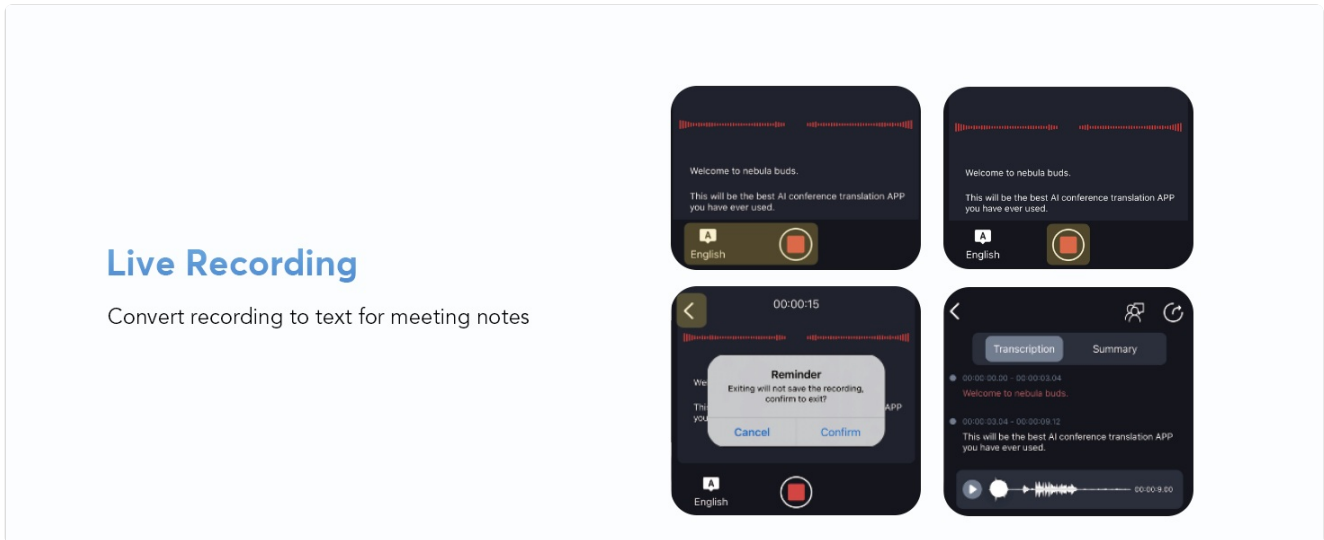


Image: Step-by-step guide for connecting the earbuds to the "NebulaBuds" app.

## 5. OPERATING INSTRUCTIONS

The KOSERNT Q16S AI earbuds offer various modes and functions for translation and audio playback.

### 5.1 Translation Modes

The earbuds support multiple translation modes via the "NebulaBuds" app:

- **Touch Mode:** Tap the earbud to initiate translation.
- **Offline Mode:** Supports translation without an internet connection in most regions (requires pre-downloaded language packs).
- **Speaker Mode:** Your speech is translated and played through your phone's speaker, while the other person's speech is translated and played in your earbud.
- **Free-Speech Mode:** Continuous, natural interpretation without manual input, ideal for conversations.

## 4 Modes

# Translation Instructions

Support Offline

Translation in Most Parts of the World

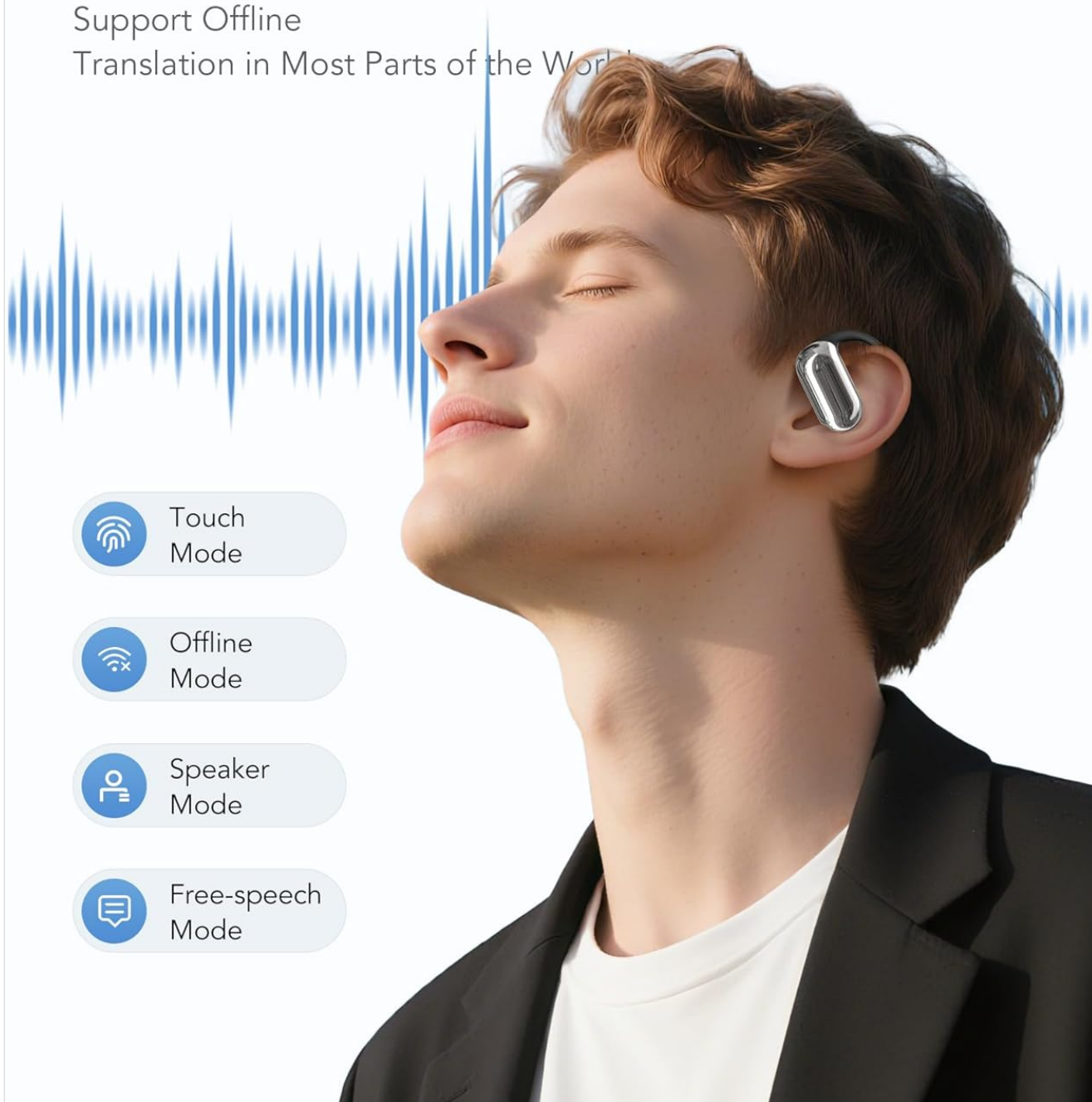


Image: Visual representation of the four primary translation modes.

## 5.2 Real-Time Translation and Interpretation

The earbuds facilitate various real-time translation scenarios:

- **Real-Time Translation:** The app offers Free Talk Mode, Touch mode, Speaker Mode, Audio Transcription, and Photo Translation.
- **Simultaneous Interpretation:** Designed for international conferences, providing real-time voice translation.
- **Face-to-Face Translation (Earphones + Mobile Phone):** Two-way translation where one person uses the earbud and the other uses the mobile phone.
- **Face-to-Face Translation (Dual-Ear Mode):** Share earbuds with another person for simultaneous two-way

conversation.

## Text-to-Image

Generates images based on provided text descriptions.  
You can choose the size and save the image.

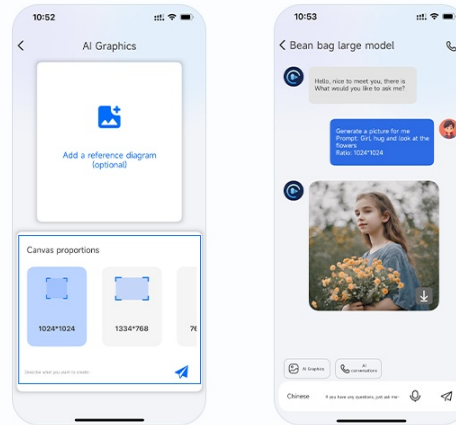


Image: Real-time translation interface within the app.

# AI Intelligent Optimization Upgraded Call Experience

Dual-channel transmission creates an unbreakable connection,  
improves stability, and lowers power consumption.



Image: Examples of simultaneous interpretation and face-to-face translation in a business setting.

## Image-to-Image

Generates images based on a reference image and text description, with fixed image size.

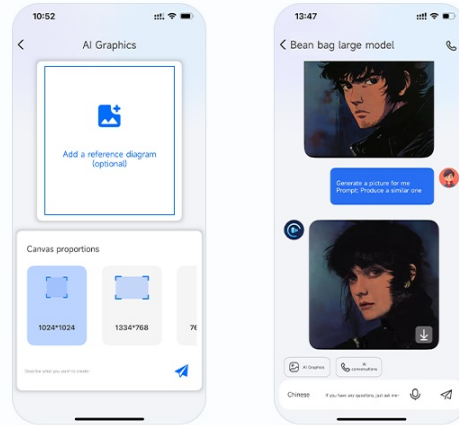


Image: App interface for simultaneous interpretation.

## Audio and Video Call

Online calls with real-time translation.  
No app needed for the other party, chat effortlessly.

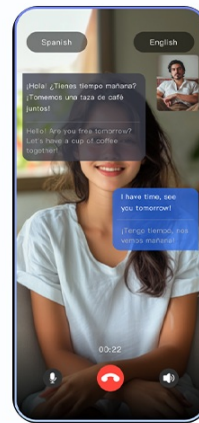


Image: App interface for face-to-face translation using one earbud and a phone.

## Audio and Video History

Easily view call records and support redial

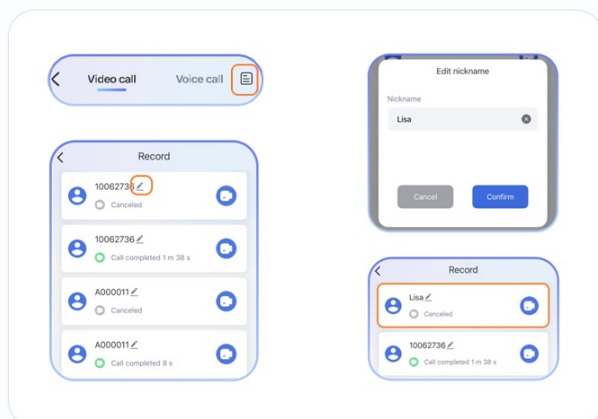


Image: Diagram showing dual-ear mode for face-to-face translation.

## 5.3 AI Smart Functions

The "NebulaBuds" app integrates several AI-powered smart features:

- **Live Recording:** Convert spoken recordings to text for meeting notes, with summary and speaker

identification.

- **AI Voice Smart Dialogue:** Interact with the AI assistant "Nebula" using real-time voice.
- **AI Chat:** Ask "Nebula" questions via text input.
- **AI Assistant:** Access over 200 AI small applications for various tasks.
- **Text-to-Image & Image-to-Image:** Generate images based on text descriptions or reference images.

## Face-to-Face Translation. Dual-Ear Mode

Share earbuds with the other, then you can both speak at the same time



Image: App interface for live recording and transcription.

## How to Connect the AI Earbuds to the "NebulaBuds"?

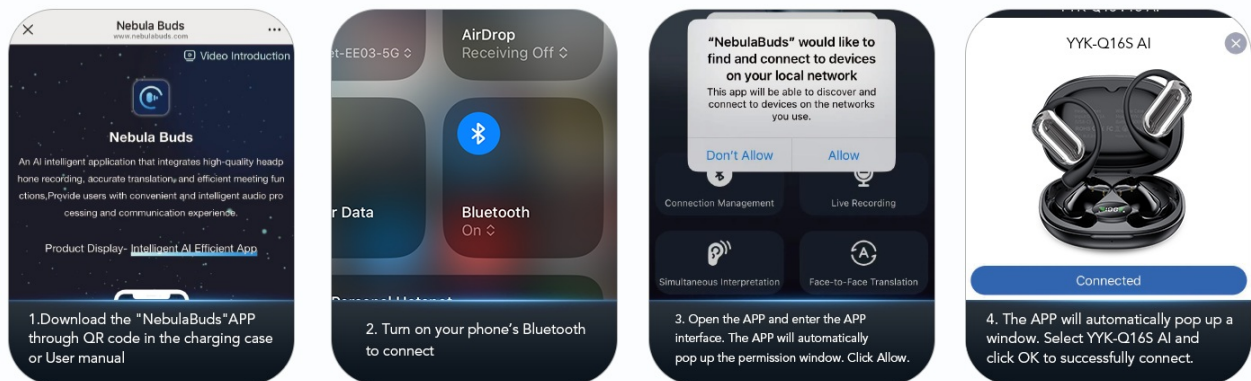


Image: App interface for reviewing and summarizing past recordings.

## Simultaneous Interpretation

Real-time translation with voice, for international conferences

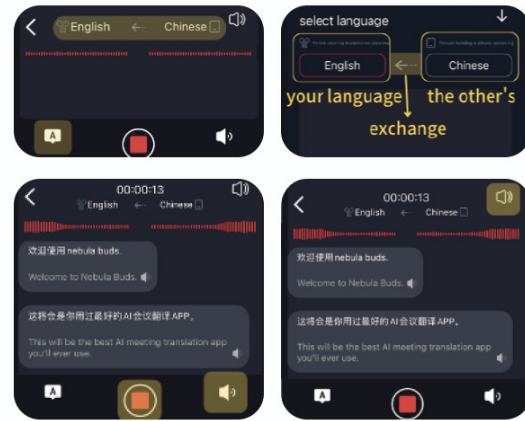


Image: App interface for AI voice smart dialogue.

## Face-to-Face Translation-Earphones+Mobile Phone

Two-way translation with voice for global negotiations or travel



Image: App interface for AI chat functionality.

## Summary & Playback

Historical recordings AI Summary&Speaker Identification

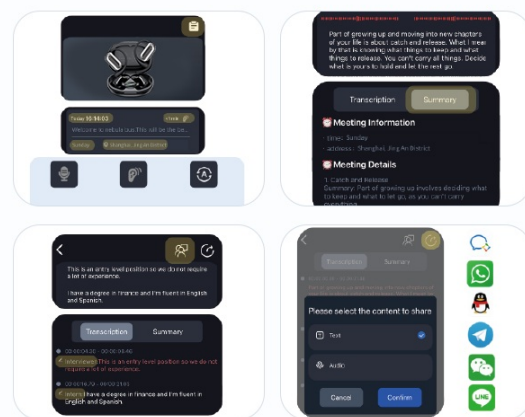


Image: App interface for the AI Assistant with various small applications.

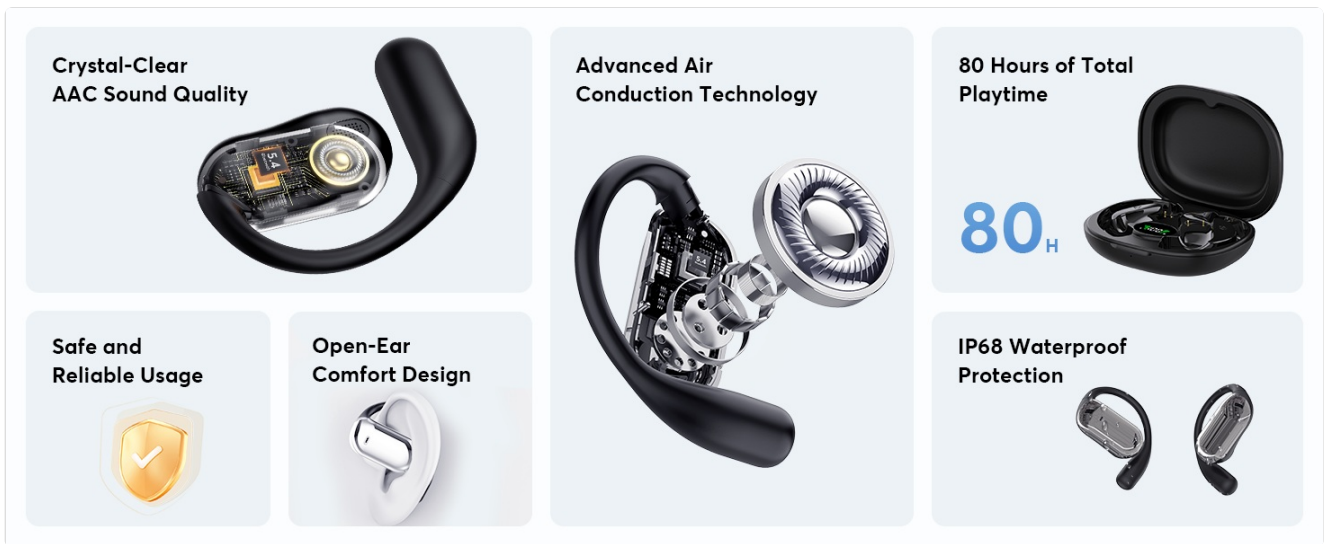


Image: App interface for Text-to-Image generation.

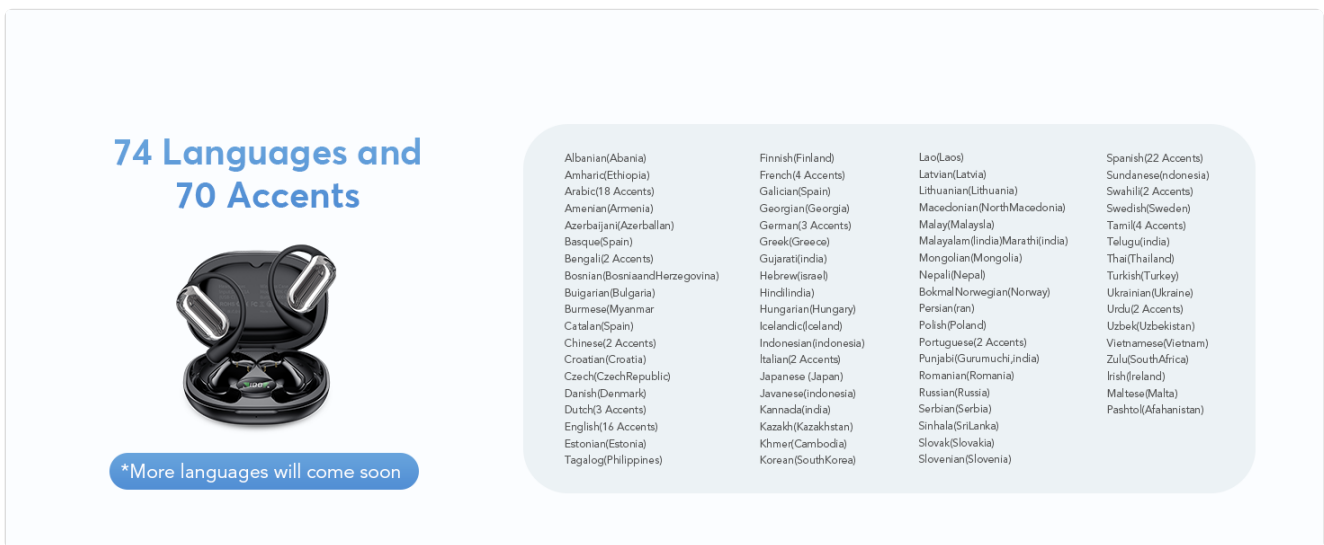


Image: App interface for Image-to-Image generation.

## 5.4 Audio and Video Calls

The earbuds support online audio and video calls with real-time translation. No special app is required for the other party, allowing for effortless communication.



Image: App interface for audio and video calls with translation.

You can easily view call records and redial directly from the app's call history.

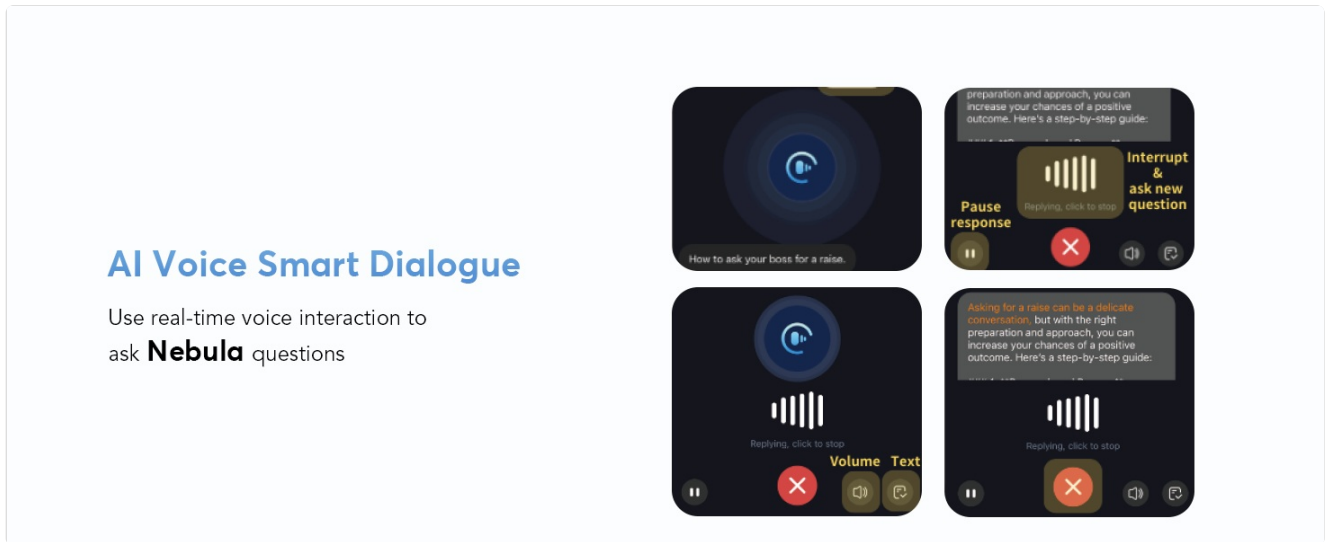


Image: App interface for audio and video call history.

### 5.5 Basic Earbud Controls

The earbuds feature intuitive touch controls for managing calls, music playback, and translation functions. Refer to the "NebulaBuds" app for a detailed guide on specific touch gestures and their corresponding actions.

## 6. MAINTENANCE

- **Cleaning:** Regularly wipe the earbuds and charging case with a soft, dry, lint-free cloth. Avoid using abrasive materials or harsh chemicals.
- **Storage:** Store the earbuds in their charging case when not in use to protect them from dust and damage. Keep them in a cool, dry place away from direct sunlight and extreme temperatures.
- **Water Resistance:** While the earbuds are IP68 waterproof, avoid prolonged submersion in water. Ensure they are dry before placing them back in the charging case.

## 7. TROUBLESHOOTING

Problem	Possible Cause	Solution
Earbuds not connecting to phone/app.	Bluetooth is off; earbuds are out of range; app permissions not granted; earbuds not in pairing mode.	<ul style="list-style-type: none"> <li>◦ Ensure Bluetooth is enabled on your device.</li> <li>◦ Make sure earbuds are charged and within Bluetooth range (approx. 10 meters).</li> <li>◦ Restart the "NebulaBuds" app and grant all requested permissions.</li> <li>◦ Place earbuds back in the case, close, then reopen to re-enter pairing mode.</li> </ul>

Problem	Possible Cause	Solution
Translation is inaccurate or delayed.	Poor internet connection; background noise; speaking too fast/unclearly; incorrect language selection.	<ul style="list-style-type: none"> <li>◦ Ensure a stable internet connection (for online translation).</li> <li>◦ Speak clearly and at a moderate pace.</li> <li>◦ Minimize background noise.</li> <li>◦ Verify that the correct source and target languages are selected in the app.</li> <li>◦ For offline translation, ensure language packs are downloaded.</li> </ul>
Earbuds not charging.	Charging cable/adaptor faulty; charging port dirty; earbuds not seated correctly in case.	<ul style="list-style-type: none"> <li>◦ Try a different USB Type-C cable and power adapter.</li> <li>◦ Clean the charging contacts on the earbuds and in the case with a dry cotton swab.</li> <li>◦ Ensure earbuds are properly seated in the charging case.</li> </ul>
Audio quality is poor.	Earbuds dirty; poor Bluetooth connection; audio source issue.	<ul style="list-style-type: none"> <li>◦ Clean the earbud speakers.</li> <li>◦ Ensure earbuds are within range of your device.</li> <li>◦ Test with a different audio source or application.</li> </ul>

## 8. SPECIFICATIONS

Feature	Detail
Model Number	Q16S AI
Brand	KOSERNT
Translation Languages	144 Languages & Accents
Connectivity	Bluetooth 5.4
Compatibility	iOS & Android
Battery Life (Single Playtime)	Up to 6 hours
Battery Life (Total with Case)	Up to 80 hours
Charging Time	Approx. 1.5 hours (for case and earbuds)

Feature	Detail
Charging Interface	USB Type-C
Water Resistance	IP68
Item Weight	3.2 ounces
Package Dimensions	4.96 x 3.74 x 1.22 inches
Batteries	2 x 9V batteries (included) <i>(Note: This might be a typo in source data, typically earbuds use smaller Li-ion batteries.)</i>

## 9. WARRANTY AND SUPPORT

---

KOSERNT products are designed for reliability and performance. For warranty information, technical support, or customer service inquiries, please refer to the contact details provided on the product packaging or the official KOSERNT website. Please retain your proof of purchase for warranty claims.

---