

Manuals+

[Q & A](#) | [Deep Search](#) | [Upload](#)

manuals.plus /

› [Shelly](#) /

› [Shelly 3EM-63W Gen3 Energy Meter User Manual](#)

Shelly 3800235261958

Shelly 3EM-63W Gen3 Energy Meter User Manual

Model: 3800235261958



PRODUCT OVERVIEW

The Shelly 3EM-63W Gen3 is a compact and versatile Wi-Fi energy meter designed for precise 4-quadrant measurement across both three-phase systems and single-phase circuits. It offers flexible setup for standalone Wi-Fi use or integration with popular home automation platforms. Its compact design simplifies installation, and it is ready for photovoltaic system monitoring to track solar energy production alongside grid usage.

Key Features

- Accurate 4-quadrant measurement for comprehensive energy reporting.
- Supports multiple connection types: three-phase or single-phase installations.
- Non-contact current measurements via current transformers.
- Phase sequence error detection (optional).
- No load threshold for precise monitoring.
- Optical pulse indication of energy usage.
- Real-time clock ensures correct timestamps for stored data, even without internet.
- On-device data logs for up to 7 days at 1-minute intervals.
- Accuracy Class B (IEC 62053-21).
- Photovoltaic ready for solar energy monitoring.
- Wi-Fi operated (2.4 GHz) for seamless smart home control.
- Bluetooth included for simplified connection and inclusion.
- Flexible installation options: wire terminals for easy loop-through wiring, placement above or below DIN-rail circuit breakers.
- Matter Version 1.2 support.
- Equipped with ESP-Shelly-C38F chip with 8 MB Memory.
- Virtual Components for integration with non-Shelly devices.



The Shelly 3EM-63W Gen3 device, shown alongside its product packaging, highlights its compact design and readiness for installation.

SETUP AND INSTALLATION

Safety Information

Always ensure power is disconnected before performing any electrical installation. Installation should be performed by a qualified electrician in accordance with local electrical codes and regulations. Do not expose the device to water or moisture. Use only in dry environments.

Physical Installation

The Shelly 3EM-63W Gen3 is designed for DIN-rail mounting. Its compact size allows for flexible placement. Connect the device using the provided color-coded wires for easy loop-through wiring. Ensure all connections are secure.



ENERGY METERING TAILORED TO YOUR NEEDS

DIN-rail mountable, this energy meter is designed to monitor either three-phase or three independent single-phase circuits, delivering real-time insights in Shelly Smart Control App.



This image illustrates the Shelly 3EM-63W Gen3 energy meter mounted on a DIN-rail within an electrical panel, showcasing its integration and wiring for energy monitoring.

Initial Configuration

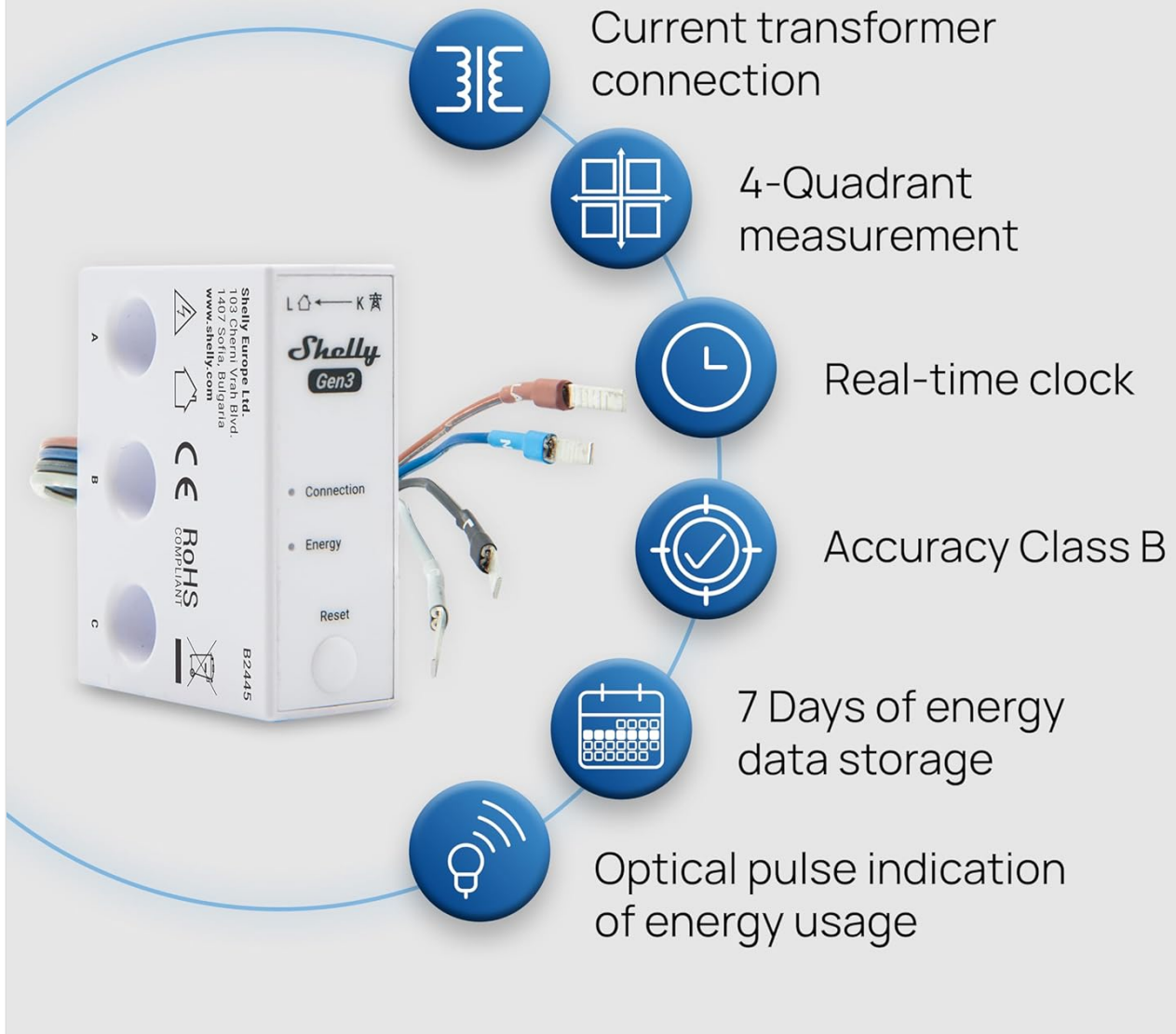
Once physically installed and powered, the device can be configured via Wi-Fi. Use the Shelly Smart Control App for simplified connection, leveraging Bluetooth for initial inclusion. Follow the in-app instructions to connect the device to your Wi-Fi network and begin monitoring.

OPERATION

Energy Monitoring

The Shelly 3EM-63W Gen3 provides accurate energy reporting through its 4-quadrant measurement capability. It reports accumulated energy, instantaneous voltage, current, active, and apparent power for each phase or channel. This allows for detailed analysis of energy consumption and production.

Shelly



A visual summary of the Shelly 3EM-63W Gen3's core functionalities, detailing its measurement capabilities, data handling, and operational features.

Data Logging and Real-time Clock

The device includes a real-time clock to ensure all recorded data has correct timestamps, even if the internet connection is temporarily interrupted. It stores up to 7 days of energy data directly on the device at 1-minute intervals, which can be retrieved later for analysis.

Photovoltaic System Monitoring

For users with solar panels, the Shelly 3EM-63W Gen3 is photovoltaic ready, enabling monitoring of both solar energy production and overall consumption. This feature helps optimize energy usage and reduce dependency on the grid.

Shelly

SOLAR ENERGY MONITORING

Make sure your solar panels are functioning at peak performance by monitoring both energy production and consumption. Minimize your dependency on the grid by making smarter choices.



This image highlights the Shelly 3EM-63W Gen3's application in solar energy systems, allowing users to monitor their solar production and consumption for optimized energy management.

MAINTENANCE

Cleaning

To maintain optimal performance, periodically clean the exterior of the device with a soft, dry cloth. Do not use abrasive cleaners or solvents.

Firmware Updates

Ensure your device's firmware is up to date to benefit from the latest features, improvements, and security enhancements. Firmware updates can typically be performed through the Shelly Smart Control App or web interface.

TROUBLESHOOTING

Common Issues and Solutions

Problem	Possible Cause / Solution
Device not connecting to Wi-Fi	Ensure the device is within Wi-Fi range. Check Wi-Fi credentials. Try restarting your router. Use Bluetooth for initial setup if available.
Inaccurate energy readings	Verify current transformer connections and ensure they are correctly installed and oriented. Check wiring for loose connections.
Device unresponsive	Check power supply to the device. Perform a hard reset if necessary (refer to reset instructions below).

Resetting the Device

If the device is unresponsive or you need to restore factory settings, locate the reset button on the device. Press and hold the reset button for 10 seconds to perform a factory reset. Refer to the device diagram for the exact location of the reset button.

TECHNICAL SPECIFICATIONS

Feature	Specification
Manufacturer	Shelly Europe
Model Number	3800235261958
Product Dimensions	4.2 x 5.4 x 2.1 cm
Item Weight	58 g
Colour	White
Wattage	15120 watts
Current Rating	63 Amps
Measurement System	Metric
Mounting Type	DIN Rail Mount
Connector Type	Screw
Included Components	1x Shelly 3EM-63W Gen3
Batteries Required	No
First Available Date	4 Feb. 2025

Shelly



Up to 30 m indoors
and 50 m outdoors

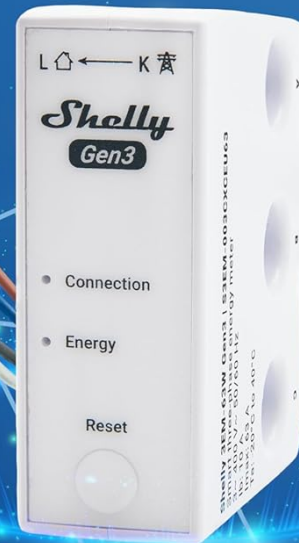


Up to 10 m indoors
and 30 m outdoors

* Bluetooth is used for inclusion purposes at Shelly Smart Control app and acting as a gateway for the Shelly BLU series.

This image provides a detailed view of the Shelly 3EM-63W Gen3's physical dimensions and its wireless communication ranges for both Wi-Fi and Bluetooth.

Shelly



GEN3 SERIES FEATURES



Matter
Version 1.2



ESP-Shelly-C38F chip
with 8 MB Memory



Virtual Components for integration
with non-Shelly devices

An infographic detailing the advanced features of the Gen3 series, including Matter protocol support, the powerful ESP-Shelly-C38F chip, and virtual components for broader compatibility.



	Shelly 3EM-63T Gen3	Shelly 3EM-63W Gen3
Size (without wires)	31x54x42 mm	21x54x42 mm
Wiring	Flat terminals	Color-coded wires
Mounting	Above and Below the circuit breaker	Below the circuit breaker

This table provides a clear comparison between the Shelly 3EM-63T Gen3 and 3EM-63W Gen3 models, outlining their distinct characteristics regarding size, wiring, and mounting options.

WARRANTY AND SUPPORT

Specific warranty details are not provided in this manual. For warranty information, please refer to the official Shelly website or contact your point of purchase. For technical support, product inquiries, or further assistance, please visit the official Shelly support portal or contact their customer service.

You can find more information and support resources on the official Shelly website: shelly.cloud

