

CALEX 4301003400-4

Calex Volterra Rechargeable Cube Wall Light

Instruction Manual

1. PRODUCT OVERVIEW

The Calex Volterra Rechargeable Cube Wall Light is a versatile lighting solution designed for both indoor and outdoor environments. Featuring a modern cubic design, it provides warm white (2700K) up and down lighting. Its wireless, battery-operated nature, combined with a motion sensor and IP44 waterproof rating, offers flexible placement and energy-efficient operation.



Image: Four Calex Volterra cube wall lights demonstrating their up and down lighting effect on a wall.

Key Features:

- **Modern Design:** Sleek cubic form with warm white (2700K) up and down illumination.
- **Wireless & Rechargeable:** Equipped with a 2000 mAh battery, rechargeable via USB-C (1.5m cable included). Provides up to 8 hours of light on a 6-hour charge.
- **Smart Motion Sensor:** Detects movement within 2-5 meters at a 90° angle, activating automatically and turning off after 30 seconds.
- **Durable & Waterproof:** IP44 rating ensures reliable performance in various weather conditions, resistant to rain and humidity.
- **Easy Installation:** Magnetic mounting plate and accessories included for quick, tool-free installation without drilling.

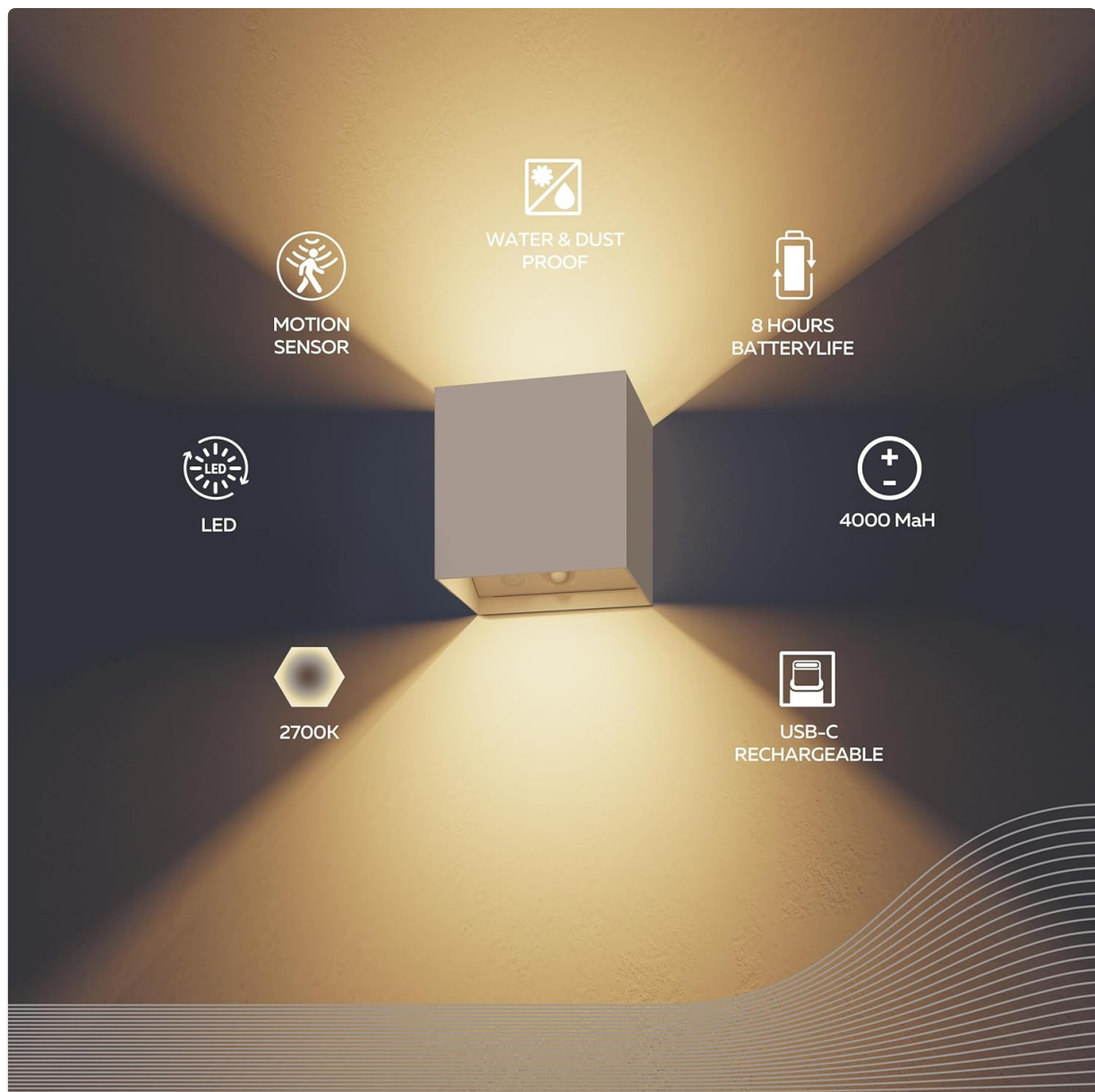


Image: Visual representation of the light's features including motion sensor, LED, warm light (2700K), water and dust proofing, battery life, and USB-C charging.

2. SAFETY INFORMATION

Please read all safety instructions before using the Calex Volterra Rechargeable Cube Wall Light. Retain this manual for future reference.

- Do not attempt to disassemble, repair, or modify the product. This will void the warranty and may cause damage or injury.
- Keep the product away from extreme temperatures, direct sunlight, and open flames.
- Although the product is IP44 rated for water resistance, ensure the USB-C charging port is dry before charging. Do not charge in wet conditions.
- This product is not a toy. Keep out of reach of children and pets.
- Use only the provided USB-C cable or a certified equivalent for charging.
- Dispose of the product and its battery responsibly according to local regulations. Do not dispose of batteries in household waste.

3. PACKAGE CONTENTS

Verify that all items are present in the package:

- 4x Calex Volterra Rechargeable Cube Wall Light
- 4x Magnetic Mounting Plate
- 1x USB-C Charging Cable (1.5m)
- Installation Accessories (screws, wall plugs)
- Instruction Manual (this document)

4. SETUP

4.1 Initial Charging

1. Locate the USB-C charging port on the light unit.
2. Connect the provided USB-C cable to the light and to a standard USB power adapter (not included).
3. Allow approximately 6 hours for a full charge. The indicator light (if present, not specified but common) will change to indicate charging status.
4. A full charge provides up to 8 hours of operation.

4.2 Mounting the Light

The Calex Volterra light features a magnetic mounting system for easy installation without drilling. For permanent or more secure installation, screws and wall plugs are provided.

1. **Choose Location:** Select a suitable location on a wall, fence, or other flat surface. Ensure the surface is clean and dry.
2. **Magnetic Mounting (Temporary/Non-Drill):**
 - Peel off the protective film from the adhesive backing of the magnetic mounting plate.
 - Press the magnetic plate firmly onto the desired surface. Hold for 30 seconds to ensure strong adhesion.
 - Align the back of the Calex Volterra light with the mounted magnetic plate. The light will snap into place securely.
3. **Screw Mounting (Permanent/Secure):**
 - Hold the magnetic mounting plate against the wall at the desired installation point.
 - Mark the positions for the screw holes through the plate.
 - Drill pilot holes at the marked positions. Insert wall plugs if necessary (for masonry/drywall).
 - Secure the magnetic plate to the wall using the provided screws.
 - Attach the Calex Volterra light to the secured magnetic plate.



Image: A person's hands attaching the Calex Volterra light to a wall, illustrating the ease of installation.

5. OPERATING INSTRUCTIONS

5.1 Motion Sensor Functionality

The Calex Volterra light is equipped with an intelligent motion sensor for automatic operation.

- The motion sensor detects movement within a range of 2 to 5 meters.
- It has a detection angle of 90 degrees.
- When motion is detected, the light will automatically turn on.
- After approximately 30 seconds of no further motion detection, the light will automatically turn off to conserve battery power.

For optimal performance, ensure the motion sensor is not obstructed and is positioned to cover the desired detection area.



Image: The Calex Volterra light installed on an outdoor wooden fence, demonstrating its illumination at night.

6. MAINTENANCE

6.1 Cleaning

- To clean the light, gently wipe the exterior with a soft, damp cloth.
- Do not use abrasive cleaners, solvents, or harsh chemicals, as these may damage the finish.
- Ensure the light is turned off and disconnected from any charging source before cleaning.

6.2 Battery Care

- Recharge the battery regularly, especially if the light is not used for extended periods, to maintain battery health.
- Avoid fully discharging the battery frequently, as this can reduce its lifespan.
- Store the light in a cool, dry place when not in use for long durations.

WATER AND DUST-PROOF

IP44



Image: The Calex Volterra light shown in a rainy environment, highlighting its IP44 water and dust resistance.

7. TROUBLESHOOTING

- **Light does not turn on:**

- Ensure the battery is fully charged. Connect to USB-C charger for 6 hours.
- Check if the motion sensor is obstructed or dirty. Clean the sensor area.
- Verify that there is sufficient ambient darkness for the sensor to activate (if it has a daylight sensor, which is common for motion lights, though not explicitly stated).

- **Short battery life:**

- Ensure the light is fully charged for the recommended 6 hours.
- Frequent activation of the motion sensor (e.g., in high-traffic areas) will reduce battery life.
- Extreme cold temperatures can affect battery performance.

- **Motion sensor not detecting:**

- Check the detection range (2-5 meters) and angle (90 degrees). Adjust the light's position if necessary.

- Ensure there are no obstructions blocking the sensor's field of view.
- Clean the sensor lens if it appears dirty.

8. SPECIFICATIONS

Brand	CALEX
Model Number	4301003400-4
Dimensions (L x W x H)	10 x 10.3 x 10 cm
Weight	631 g
Material	Aluminum
Color	Sand
Power Source	Battery Powered
Battery Capacity	2000 mAh
Charging Time	Approx. 6 hours
Operating Time	Up to 8 hours
Voltage	5 Volts (DC)
Wattage	1 Watt
Luminous Flux	170 lm
Color Temperature	2700 Kelvin (Warm White)
Ingress Protection (IP) Rating	IP44 (Water and Dust Resistant)
Motion Sensor Range	2-5 meters
Motion Sensor Angle	90 degrees
Auto-off Timer	30 seconds (after no motion)
Usage	Indoor / Outdoor

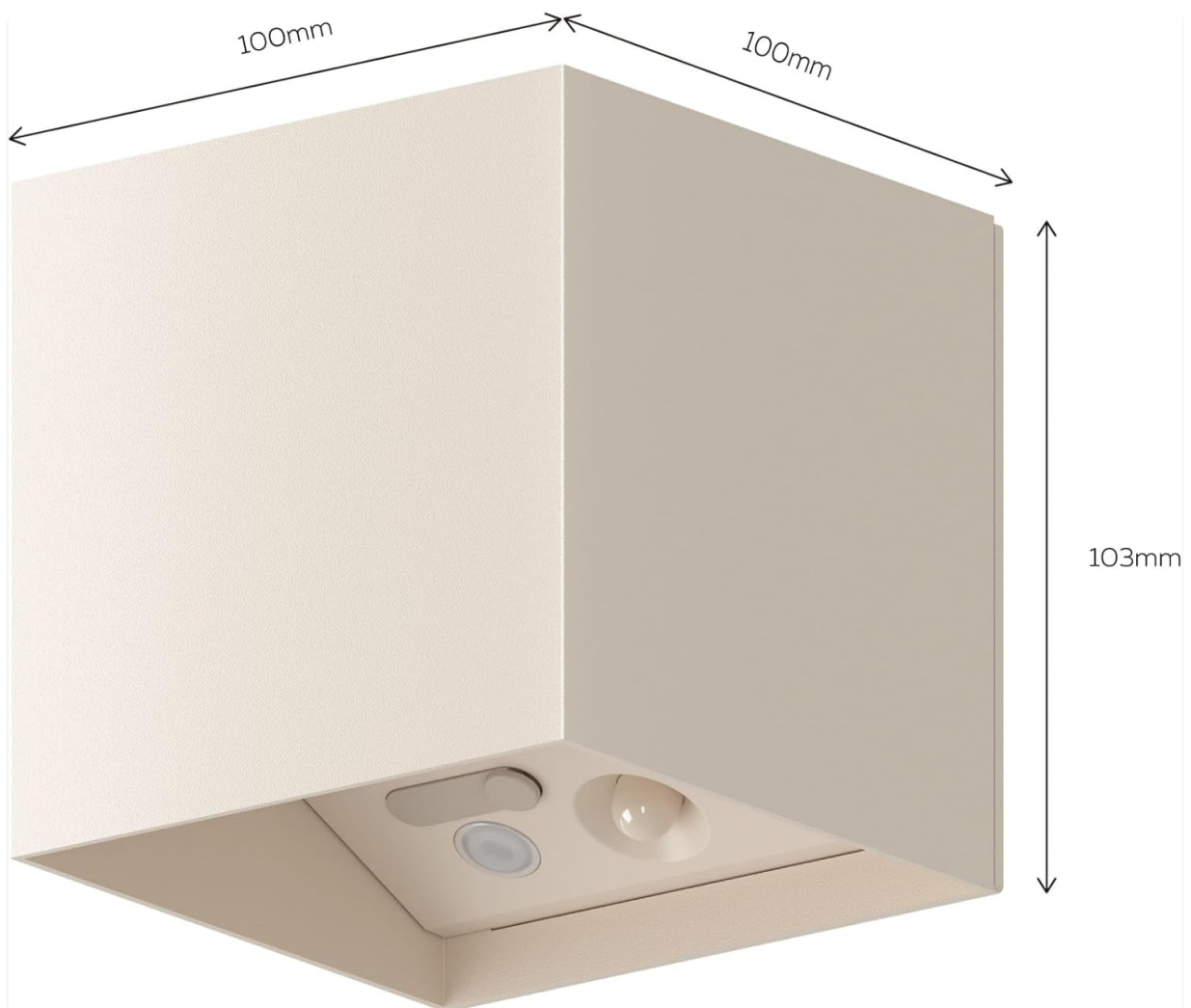


Image: Technical drawing illustrating the dimensions of the Calex Volterra light.

9. WARRANTY AND SUPPORT

Calex products are manufactured to high-quality standards. For warranty information, technical support, or any questions regarding your Calex Volterra Rechargeable Cube Wall Light, please refer to the warranty card included with your purchase or visit the official Calex website.

You may also contact your retailer for assistance.

© 2025 CALEX. All rights reserved.



[Calex Smart Outdoor Spotlights: Assembly and Installation Guide](#)

This guide provides step-by-step instructions for assembling and installing Calex Smart Outdoor spotlights, including setup with the Calex Smart app and network requirements.



[CALEX® Extraction Device: Direct Sampling Guide](#)

Instructions for using the CALEX® Extraction Device for direct faecal sample collection for an elastase test. Includes a checklist, intended use, sample requirements, and step-by-step collection guidance.

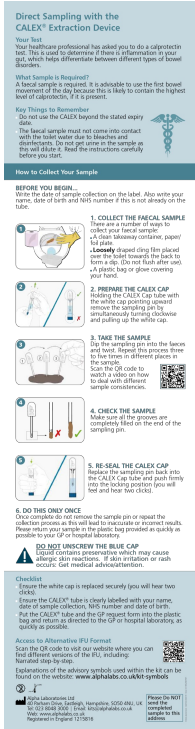


[Calex C4 Smart Camera User Manual and Setup Guide](#)

Comprehensive guide for setting up and using the Calex C4 Smart Camera, including installation, features, troubleshooting, and compliance information.



Please check out our Smartplaylist on YouTube
for more information and updates for this product.



[CALEX Extraction Device: Direct Sampling Instructions for Calprotectin Test](#)

A comprehensive guide for patients on using the CALEX Extraction Device to collect a faecal sample for calprotectin testing. Learn how to properly collect, prepare, and return your sample for accurate results.

LEDFYR



[LEDFYR LED Lighting Chain - IKEA | Battery Operated Indoor Lights](#)

Discover the IKEA LEDFYR LED lighting chain. This battery-operated indoor light features 12 lights and is designed for safe and decorative use. Includes assembly instructions and safety warnings.

CALEX
SOLUTIONS
SMART



Please check out our Smart playlist on Youtube for more help and inspiration for this product.

[Caalex Smart Video Doorbell: Installation and User Guide](#)

Comprehensive guide to installing and setting up your Caalex Smart Video Doorbell, including package contents, product description, app integration, chime pairing, and safety information.