

avedio links 4K HDMI Audio Extractor (HDMI 1.4b) and 8K HDMI Audio Extractor (HDMI 2.1)

avedio links 4K and 8K HDMI Audio Extractor Splitter User Manual

Brand: avedio links

INTRODUCTION

This manual provides detailed instructions for the avedio links 4K and 8K HDMI Audio Extractor Splitters. These devices are designed to extract digital audio from an HDMI source and output it via optical SPDIF, coaxial, or L/R stereo audio, while simultaneously passing the original video/audio signal through to an HDMI output. This allows for flexible audio integration with various sound systems such as amplifiers, AV receivers, or soundbars.

KEY FEATURES

- **4K HDMI Audio Extractor:** Extracts audio from HDMI 1.4b sources up to 4K@30Hz, supporting HDCP 1.4, Full HD 1080P, 3D, and 36-bit deep color. Audio formats include DTS-HD, Dolby TrueHD, LPCM7.1, DTS, Dolby-AC3, and DSD.
- **8K HDMI Audio Extractor:** Extracts audio from HDMI 2.1 sources up to 8K@60Hz, 4K@120Hz, 2K@144Hz, and 1080P@240Hz. Supports HDCP 2.3, 4K HDR ULTRAHD, VRR, and Chroma 4:2:0 / 4:2:2 / 4:4:4 with a max bandwidth of 48Gbps.
- **Multiple Audio Outputs:** Provides optical SPDIF, coaxial, and 3.5mm audio jack outputs for versatile connectivity to external audio devices.
- **Audio Output Modes:** Features PASS, 2.0CH, and 5.1CH modes for EDID switching, allowing selection of the desired audio output configuration.
- **Supported Digital Audio Formats:** Compatible with LPCM5.1/2.0, DTS-HD, Dolby-Digital, and Dolby-trueHD.

PRODUCT OVERVIEW

4K HDMI Audio Extractor (HDMI 1.4b)



Image: Front and rear view of the avedio links 4K HDMI Audio Extractor. The top unit shows the DC 5V power input, PWR indicator, HDMI IN port, and audio mode switches (PASS, 2CH, 5.1CH). The bottom unit shows the HDMI OUT port, SPDIF optical output, Coaxial output, and L/R RCA audio outputs.

8K HDMI Audio Extractor (HDMI 2.1)



Image: Front and rear view of the avedio links 8K HDMI Audio Extractor. Similar to the 4K model, the top unit features DC 5V power, PWR indicator, HDMI IN, and audio mode switches. The bottom unit includes HDMI OUT, SPDIF optical, Coaxial, and L/R RCA audio outputs.

SETUP AND CONNECTION

Follow these steps to connect your HDMI Audio Extractor:

1. Connect your HDMI source device (e.g., TV Box, DVD Player, Game Console) to the HDMI IN port of the extractor using an HDMI cable.
2. Connect the HDMI OUT port of the extractor to your display device (e.g., HDTV, Projector) using an HDMI cable.
3. Connect your desired audio output (SPDIF, Coaxial, or L/R RCA) from the extractor to your audio receiving device (e.g., amplifier, soundbar, headphones).
4. Connect the provided USB power cable to the DC 5V port on the extractor and to a USB power source.
5. Ensure the ON/OFF switch is in the 'ON' position.

4K HD|3D **Picture Makes More Realistic**

Via optical/RCA L/R port add external speaker, amplifiers, soundbars to your flim/game system with ease



Image: A setup diagram illustrating the 4K HDMI Audio Extractor connected to a TV for video output and to external speakers for audio output, enhancing the sound experience for gaming or movies.

Important Note: ARC Function Not Supported

ARC Function Not Supported

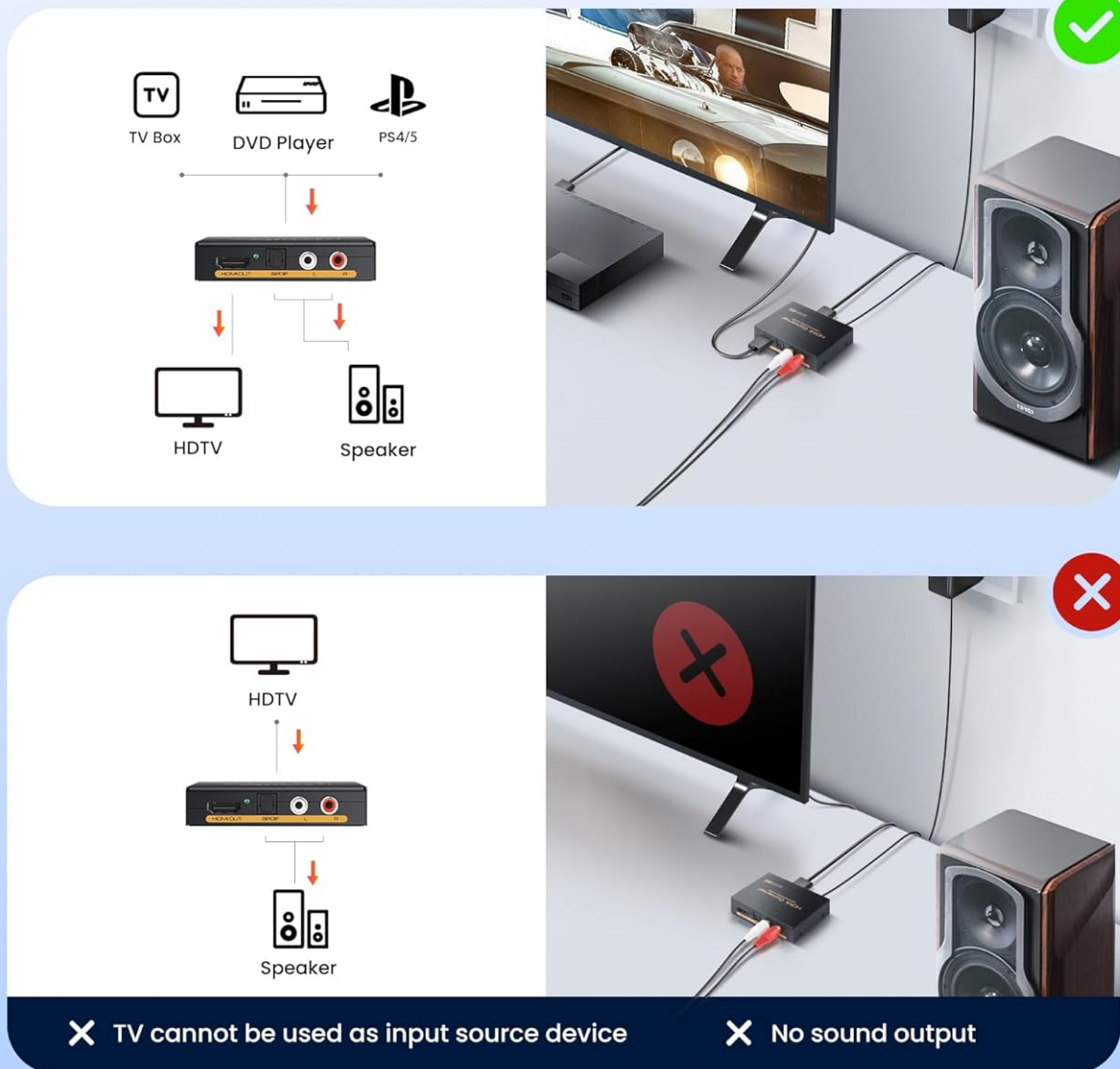


Image: A diagram showing correct and incorrect usage scenarios. The top part shows a TV Box, DVD Player, or PS4/5 connected to the extractor, which then connects to an HDTV and speakers, indicating proper functionality. The bottom part shows an HDTV connected as an input source to the extractor, resulting in no sound output, clearly stating that the ARC function is not supported and a TV cannot be used as an input source device for audio extraction.

These HDMI Audio Extractor Splitters do not support the Audio Return Channel (ARC) function. Therefore, the TV cannot be used as an input source device for audio extraction. Ensure your source device is connected to the HDMI IN port.

OPERATING INSTRUCTIONS

Audio Output Modes

The extractor features a switch to select between three audio output modes:

3 Audio Output Modes

Note: When switching to the "2CH / 5.1CH" position, please set the audio output format of the input source to LPCM/PCM



Image: A visual representation of the three audio output modes. 'PASS Mode' sends audio directly to HDTVs or projectors. '2CH' mode is for stereo speakers or headphones. '5.1CH' mode is for amplifiers or surround sound systems, with a note to set the input source audio format to LPCM/PCM when switching to 2CH/5.1CH.

- **PASS Mode:** The audio signal is passed through directly to the HDMI output without modification. This is suitable when your display device handles the audio.
- **2.0CH Mode:** The audio is converted to 2-channel stereo output via SPDIF, Coaxial, or L/R RCA. Ideal for stereo speakers or headphones.
- **5.1CH Mode:** The audio is output as 5.1 channel surround sound via SPDIF or Coaxial. This mode is suitable for compatible amplifiers or surround sound systems. Ensure the source audio is 5.1CH for optimal performance.

Note: When switching to the "2CH" or "5.1CH" position, please set the audio output format of the input source to LPCM/PCM for proper functionality.

SPDIF and 3.5mmjack audio output simultaneously.



Support extract audio signal from HDMI source to optical



Support extract audio signal from HDMI source to RCL L/R



Image: Two illustrations demonstrating the audio extraction capabilities. The top image shows the extractor supporting audio signal extraction from an HDMI source to an optical output, connected to a multi-speaker home theater system. The bottom image shows the extractor supporting audio signal extraction from an HDMI source to an RCA L/R output, connected to headphones for personal listening.

The extractor supports simultaneous audio output through SPDIF, Coaxial, and L/R RCA ports, allowing connection to multiple audio devices if needed.

5.1CH Dolby Digital Support



Support 5.1CH Dobby Digital

Enjoy the ultimate in immersive sound for your games, music and movies (the source audio must be 5.1CH).

Image: A graphic emphasizing support for 5.1CH Dolby Digital, with sound waves emanating from a soundbar and surrounding speakers, indicating an immersive audio experience for games, music, and movies. A note specifies that the source audio must be 5.1CH.

For an immersive audio experience, the 8K model supports 5.1CH Dolby Digital. Ensure your audio source is providing a 5.1CH signal for this feature to function correctly.

SPECIFICATIONS

Feature	4K HDMI Audio Extractor (HDMI 1.4b)	8K HDMI Audio Extractor (HDMI 2.1)
HDMI Version	HDMI 1.4b	HDMI 2.1
HDCP Version	HDCP 1.4	HDCP 2.3

Feature	4K HDMI Audio Extractor (HDMI 1.4b)	8K HDMI Audio Extractor (HDMI 2.1)
Max Resolution	4K@30Hz, 1080P, 3D	8K@60Hz, 4K@120Hz, 2K@144Hz, 1080P@240Hz
Color Depth	36-bit Deep Color	Chroma 4:2:0 / 4:2:2 / 4:4:4
Max Bandwidth	Not specified (typical for HDMI 1.4b)	48Gbps
Supported Audio Formats	DTS-HD, Dolby TrueHD, LPCM7.1, DTS, Dolby-AC3, DSD	LPCM5.1/2.0, DTS-HD, Dolby-Digital, Dolby-trueHD
Other Features		HDR ULTRAHD, VRR
Power Supply	DC 5V	

Note: To achieve 8K resolution, an HDMI 2.1 cable within 10 feet is required.

TROUBLESHOOTING

- **No Audio Output:**
 - Ensure all cables are securely connected.
 - Verify the power adapter is connected and the unit is powered on.
 - Check the audio output mode switch (PASS, 2.0CH, 5.1CH) and ensure it matches your audio setup.
 - Confirm the audio format setting on your source device is compatible with the selected output mode (e.g., LPCM/PCM for 2.0CH/5.1CH).
 - Ensure your audio receiving device (amplifier, soundbar) is correctly configured and powered on.
- **No Video Output:**
 - Check all HDMI cable connections.
 - Ensure the HDMI cables used are of sufficient quality and support the desired resolution (e.g., HDMI 2.1 for 8K).
 - Try connecting the HDMI source directly to the display to rule out cable or source issues.
- **Poor Audio Quality:**
 - Ensure high-quality audio cables are used.
 - Check for any interference from other electronic devices.
 - Verify the audio settings on your source device and audio receiving device.

VIDEO DEMONSTRATION



Video: A demonstration of the HDMI ARC Audio Extractor, showcasing its features and connectivity options for RCA output. This video provides a visual guide to understanding the product's functionality.

WARRANTY AND SUPPORT

For warranty information or technical support, please refer to the product packaging or contact avedio links

customer service directly. Keep your purchase receipt for warranty claims.