

Manuals+

[Q & A](#) | [Deep Search](#) | [Upload](#)

[manuals.plus](#) /

› [Sorbus](#) /

› [Sorbus 35-Inch Floating Wall Shelves \(Grey, 3-Pack\) - Instruction Manual](#)

Sorbus 35 Inch Floating Shelves

Sorbus 35-Inch Floating Wall Shelves (Grey, 3-Pack) - Instruction Manual

Model: 35 Inch Floating Shelves (3 Pack)

INTRODUCTION

This manual provides detailed instructions for the installation, use, and maintenance of your Sorbus 35-Inch Floating Wall Shelves. These shelves are designed to offer functional storage and display space, enhancing the decor of various rooms such as bedrooms, kitchens, and living rooms. Each shelf measures approximately 35 inches in length, 9 inches in depth, and 1.5 inches in height, and is capable of holding up to 22 lbs.



Image: Sorbus brand logo displayed above a modern living room featuring floating shelves on the wall.

PACKAGE CONTENTS

Before beginning installation, please verify that all components are present:

- 3 x Floating Shelf Boards (Grey, 35 inches long)
- 3 x Metal Mounting Brackets
- Mounting Hardware (screws, wall anchors, wood textured screw hole covers)
- Instruction Manual



Image: A set of three grey floating shelves. The bottom shelf is partially pulled away to reveal the hidden metal mounting bracket that slides into the shelf.

INSTALLATION INSTRUCTIONS

Minor assembly is required. All necessary installation parts are included. For optimal stability, it is recommended to mount the brackets into wall studs where possible. If mounting into drywall, use appropriate wall anchors.

1. **Step 1: Mark Placement and Attach Bracket to Wall.**

Determine the desired location for your shelf. Use a level to ensure the bracket is straight. Mark the drilling points for the screws. Drill pilot holes, then secure the metal mounting bracket to the wall using the provided screws and wall anchors (if not drilling into a stud).

Installation is a Breeze

All installation parts
are included in the box



Image: A hand holding a drill, attaching a black metal bracket to a wall. Screws and wall anchors are shown below.

2. **Step 2: Slide Shelf onto Bracket.**

Carefully slide the floating shelf board onto the installed metal bracket. Ensure the shelf is fully seated and flush against the wall.

3. **Step 3: Secure Shelf to Bracket.**

Once the shelf is in place, use the smaller screws to secure the shelf to the bracket from underneath. Cover the screw holes with the provided wood-textured covers for a finished look.



Image: A visual guide showing three steps: 1. Attaching the bracket to the wall with a drill. 2. Sliding the shelf onto the bracket. 3. Securing the shelf to the bracket with a drill.

Repeat these steps for each shelf. Ensure all shelves are securely fastened before placing items on them.

OPERATING (USAGE) GUIDELINES

Your Sorbus floating shelves are designed for versatile display and storage. Each shelf has a maximum weight capacity of 22 lbs. Distribute weight evenly to maintain stability.

- **Display Items:** Use the shelves to showcase decorative items, photo frames, small plants, collectibles, or trophies.
- **Storage:** Ideal for organizing books, kitchen essentials, bathroom toiletries, or office supplies.
- **Placement:** Install in various rooms such as living rooms, bedrooms, kitchens, bathrooms, or entryways to maximize vertical space.



Image: Three grey floating shelves installed in a kitchen

above a countertop, holding bowls, plates, and small potted plants.



Image: Two grey floating shelves mounted on a white wall in a living room, displaying decorative vases and small potted plants.



Image: Two grey floating shelves mounted above a desk in a home office, displaying books and decorative items.

Multifunctional Floating Shelves



Plants

Trophies

Candles



Frames

Scented Sticks

Security Cameras

Image: A graphic illustrating various items that can be displayed on floating shelves, such as plants, trophies, candles, picture frames, scented diffusers, and small security cameras.

MAINTENANCE

To ensure the longevity and appearance of your Sorbus floating shelves, follow these simple maintenance guidelines:

- **Cleaning:** Wipe the shelves with a soft, damp cloth. Avoid abrasive cleaners or harsh chemicals, as these can damage the matte finish.
- **Dusting:** Regularly dust the shelves to prevent buildup.
- **Weight Limit:** Do not exceed the maximum weight capacity of 22 lbs per shelf. Overloading can cause damage to the shelf or mounting hardware.
- **Inspection:** Periodically check the mounting hardware to ensure it remains secure. Tighten screws if necessary.

TROUBLESHOOTING

If you encounter any issues during or after installation, consider the following common solutions:

- **Shelf feels unstable:**
 - Ensure the mounting bracket is securely fastened to the wall. If not in a stud, verify that appropriate wall anchors were used and installed correctly.
 - Check that the shelf is fully seated onto the bracket and secured from underneath with the small screws.
 - Verify that the weight on the shelf does not exceed 22 lbs and is evenly distributed.
- **Difficulty sliding shelf onto bracket:**
 - Ensure the bracket is installed perfectly level and straight. Any misalignment can hinder the shelf from sliding on smoothly.
 - Inspect the inside of the shelf and the bracket for any obstructions or manufacturing imperfections.

- **Missing or damaged parts:**

If any parts are missing or damaged upon arrival, please contact Sorbus customer support for assistance.

SPECIFICATIONS

Brand	Sorbus
Model	35 Inch Floating Shelves (3 Pack)
Color	Grey
Product Dimensions (each shelf)	35"W x 9"D x 1.5"H
Number of Shelves	3

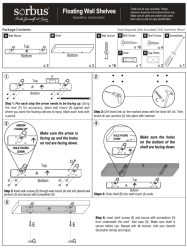
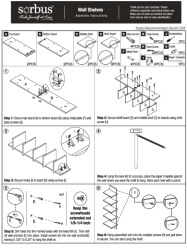
Material	Engineered faux wood with matte finish
Weight Limit (per shelf)	22 lbs
Installation Type	Wall-mounted
Assembly Required	Yes
Included Components	Hardware
Item Weight (total package)	14.43 pounds
UPC	192405409639
ASIN	B0DVB9D732

WARRANTY AND SUPPORT

For warranty information or technical support, please contact Sorbus customer service. Refer to the product packaging or the official Sorbus website for contact details.

You can also visit the [Sorbus Store on Amazon](#) for additional product information and support resources.

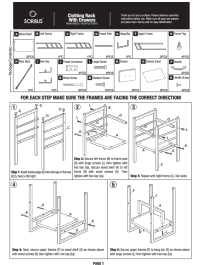
Related Documents - 35 Inch Floating Shelves

	<p>Sorbus Floating Wall Shelves Assembly Instructions</p> <p>Step-by-step guide to assembling and installing Sorbus Floating Wall Shelves, including package contents and required tools.</p>
	<p>Sorbus Wall Shelves Assembly Instructions - DIY Home Decor</p> <p>Step-by-step guide for assembling Sorbus Wall Shelves. Includes parts list, tools, and detailed instructions for easy installation of your new home decor shelving unit.</p>



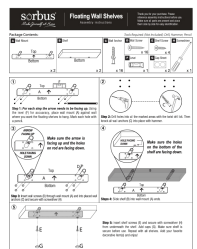
[Sorbus Modern Tree Book Shelf - Stylish Home Storage Solution](#)

Discover the Sorbus Modern Tree Bookshelf, a sleek and functional statement piece designed to elevate your storage and display options in any contemporary space. This unique tree-shaped bookshelf offers a stylish way to organize books and decor.



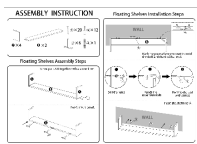
[SORBUS Clothing Rack With Drawers: Assembly Instructions & Guide](#)

Comprehensive assembly instructions for the SORBUS Clothing Rack With Drawers (Model DRW-CR-PI). Includes parts list, step-by-step assembly, and wall mounting guide for safe installation.



[Sorbus Floating Wall Shelves Assembly Instructions](#)

Step-by-step guide to assembling and installing Sorbus Floating Wall Shelves, including package contents and required tools.



[ENPKLUTE Floating Shelves Assembly Instructions](#)

Step-by-step guide for assembling and installing ENPKLUTE floating wall shelves. Includes parts list and installation procedures for a secure and stylish wall-mounted storage solution.