

Braun BRAS420E

Braun AS4.2 Hot Air Styler Instruction Manual

Model: BRAS420E

1. INTRODUCTION

This manual provides essential information for the safe and effective use of your Braun AS4.2 Hot Air Styler. Please read these instructions carefully before using the appliance and retain them for future reference.

The Braun AS4.2 Hot Air Styler is designed for drying, controlling, and shaping hair. It features a 1000W HTDC motor for fast drying at lower temperatures, IONTEC technology for smooth and shiny results, and three styling modes including a cool shot function. Two precision-designed attachments are included: an ergonomic drying nozzle and a thermal round brush.

2. IMPORTANT SAFETY INFORMATION

To reduce the risk of electric shock, burns, fire, or injury, always follow these basic safety precautions:

- Do not use this appliance near water, such as in a bathtub, shower, or washbasin.
- Always unplug the appliance immediately after use and before cleaning.
- Do not use while sleeping.
- Avoid using near flammable materials.
- Allow the appliance to cool completely before storing.
- Keep out of reach of children.
- Do not operate any appliance with a damaged cord or plug, or if the appliance malfunctions or has been dropped or damaged in any manner.
- Do not block the air openings or place the appliance on a soft surface, such as a bed or couch, where the air openings may be blocked.
- Do not use an extension cord with this appliance.

3. PRODUCT COMPONENTS AND FEATURES



Image 3.1: Braun AS4.2 Hot Air Styler with its two main attachments.



Image 3.2: Detail of the temperature and speed settings switch.

3.1 Main Unit

- **Power Switch / Temperature & Speed Settings:** Controls the appliance and selects desired heat and airflow.
- **Cool Shot Button:** Provides a burst of cool air to set your style.
- **Attachment Release Button:** For easily changing accessories.
- **Removable Air Filter:** Located at the back of the unit for easy cleaning and maintenance.
- **Swivel Cord:** For flexible use and tangle-free operation.

3.2 Attachments

- **Ergonomic Drying Nozzle:** Designed for fast and easy drying in all directions.
- **Thermal Round Brush:** Helps to lift roots, add volume, and shape hair.



Image 3.3: The ergonomic drying nozzle attached to the styler.

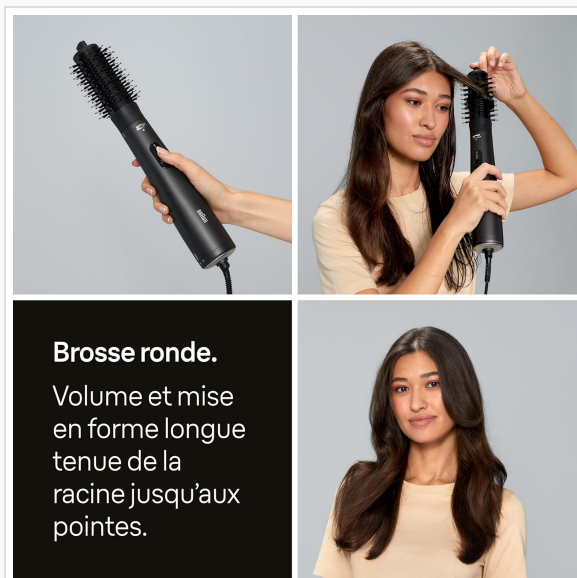


Image 3.4: The thermal round brush attached to the styler.

3.3 IONTEC Technology

The IONTEC feature releases millions of active ions to neutralize static electricity and reduce frizz, resulting in smoother, shinier, and healthier-looking hair.



Image 3.5: Hair styled with IONTEC technology, appearing smooth and shiny.

4. SETUP

4.1 Attaching and Detaching Accessories

1. To attach an accessory, align the desired attachment (drying nozzle or thermal round brush) with the main unit and push it firmly until it clicks into place.
2. To detach an accessory, press the attachment release button and pull the accessory away from the main unit.

Chaque détail compte.

Les accessoires conçus avec précision sont facilement interchangeables et sécurisés avec un mécanisme de verrouillage.

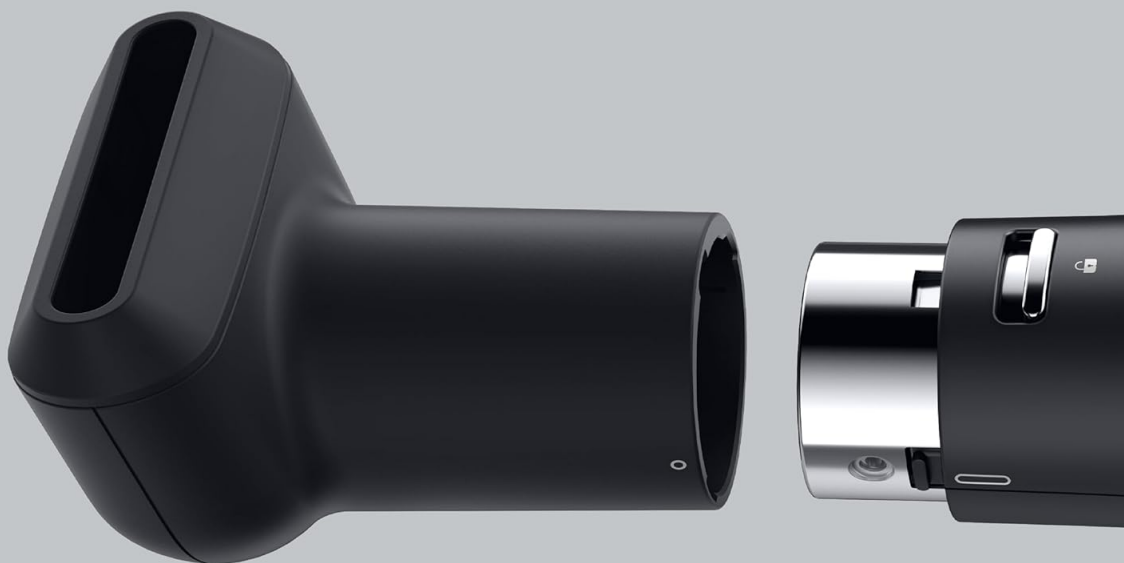


Image 4.1: The locking mechanism for attaching accessories.

4.2 Power Connection

Ensure the appliance is switched off before plugging it into a suitable electrical outlet. The voltage rating of your appliance must correspond to your mains voltage.

5. OPERATING INSTRUCTIONS

5.1 Powering On and Selecting Settings

1. Plug the appliance into an electrical outlet.
2. Slide the power switch to select your desired temperature and speed setting:
 - **Setting 0:** Off
 - **Setting *:** Cool shot (no heat, high airflow)
 - **Setting I:** Low heat, low airflow
 - **Setting II:** High heat, high airflow
3. For best results, start with towel-dried hair.

5.2 Using the Drying Nozzle

Attach the ergonomic drying nozzle for quick and efficient initial drying. Direct the airflow over sections of your hair, moving the styler continuously to avoid concentrating heat in one area.

5.3 Using the Thermal Round Brush

Once your hair is partially dry, attach the thermal round brush. This attachment is ideal for adding volume, creating soft curls, or shaping the ends of your hair.

1. Take a section of hair and place the brush underneath, close to the roots.
2. Gently pull the brush through the hair section, rotating it as you go to create tension and shape.
3. For added volume at the roots, lift the section upwards and hold the brush at the root area for a few seconds before slowly pulling it through.
4. Repeat for all sections of hair until desired style is achieved.

5.4 Cool Shot Function

After styling a section of hair with heat, press and hold the cool shot button to deliver a burst of cool air. This helps to set the style and provide longer-lasting results.

6. MAINTENANCE

6.1 Cleaning the Air Filter

Regular cleaning of the air filter is crucial for maintaining optimal performance and preventing overheating.

1. Ensure the appliance is unplugged and completely cool.
2. Locate the removable air filter at the rear of the styler.
3. Gently twist or pull to remove the filter cover.
4. Brush away any accumulated dust, lint, or hair from the filter using a soft brush or cloth.
5. Replace the filter cover, ensuring it is securely reattached.

Performances longue durée.

Filtre à air amovible pour
un nettoyage facile.
Évite la surchauffe pour
une plus grande longévité.



Image 6.1: The removable air filter for easy cleaning.

6.2 General Cleaning and Storage

- Wipe the exterior of the appliance with a soft, damp cloth. Do not use abrasive cleaners or solvents.
- Ensure the appliance is completely dry before storing.
- Store the styler and its attachments in a cool, dry place, away from direct sunlight and moisture.
- Do not wrap the power cord around the appliance, as this can damage the cord.

7. TROUBLESHOOTING

Problem	Possible Cause	Solution
Appliance does not turn on.	Not plugged in correctly; no power from outlet.	Check power cord connection; test outlet with another device.
Appliance overheats or shuts off.	Blocked air filter; prolonged use.	Unplug and allow to cool. Clean the air filter (refer to Section 6.1). Ensure air vents are not blocked during use.

Problem	Possible Cause	Solution
Attachments are difficult to remove or attach.	Attachment not aligned correctly; release button not fully pressed.	Ensure correct alignment and firmly press the release button.

8. SPECIFICATIONS

Feature	Detail
Model Number	BRAS420E
Power	1000 Watts
Voltage	230 Volts (AC)
Number of Speeds/Settings	3 (including Cool Shot)
Dimensions (L x W x H)	31 x 5.5 x 5 cm (approx.)
Weight	598 grams (approx.)
Cord Length	195 cm
Technology	IONTEC, HTDC Motor
Included Accessories	Ergonomic Drying Nozzle, Thermal Round Brush

9. WARRANTY AND SUPPORT

For warranty information or if you encounter any issues not covered in this manual, please contact Braun customer support or visit the official Braun website. Keep your proof of purchase for warranty claims.

For further assistance, please refer to the contact information provided with your product packaging or visit www.braun.com.