

GroWell B0DV19V3KX

GroWell Red Light Therapy Hair Growth Cap Instruction Manual

Model: B0DV19V3KX

1. PRODUCT OVERVIEW

The GroWell Red Light Therapy Hair Growth Cap is an FDA-cleared device designed to promote hair regrowth and reduce shedding using advanced red light therapy. This manual provides essential information for the safe and effective use of your device.

2. SAFETY INFORMATION

WARNING: Laser Radiation. Avoid Direct Eye Exposure.

- This is a Class 3R Laser Product.
- Maximum output: 5mW cw @ 655nm.
- Do not look directly into the laser apertures.
- Keep out of reach of children.
- Consult a healthcare professional before use if you have any pre-existing medical conditions, are pregnant, or are taking photosensitizing medications.
- Do not use on broken or irritated skin.

3. WHAT'S INCLUDED

- GroWell Red Light Therapy Flexible Panel
- Baseball Cap (Black)
- Rechargeable Battery Pack
- USB Charging Cable
- User Manual



Image: The complete GroWell Hair Growth Cap kit, showing the baseball cap, the internal red light panel, battery pack, and charging cables.

4. SETUP

1. **Charge the Battery Pack:** Before first use, fully charge the included battery pack using the USB charging cable. The indicator lights on the battery pack will show charging status and turn solid when fully charged. This may take 2 to 2.5 hours if starting from a low charge.
2. **Insert the Flexible Panel:** Carefully place the flexible red light therapy panel inside the baseball cap. Ensure it is positioned comfortably and securely against your scalp. The panel is designed to fit snugly.
3. **Connect the Power:** Connect the cable from the flexible panel to the charged battery pack.

THE EASIEST STEP TOWARD THICKER HAIR



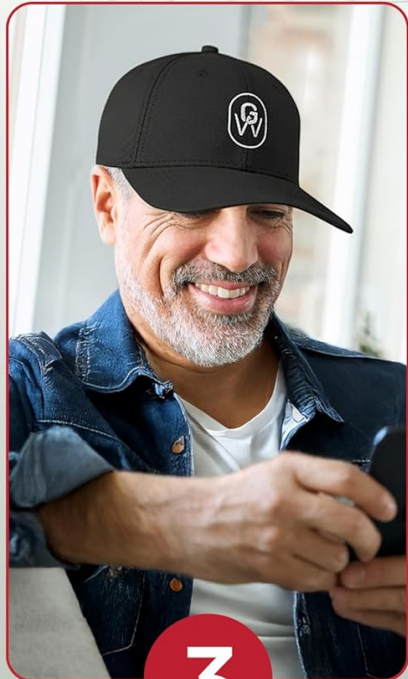
1

Plug the power
cord into
the cap



2

Press the power
button to begin
treatment



3

Auto Shut-off
after 25 Minute
Session

Image: Visual guide for connecting the power cord to the cap and initiating a treatment session.

5. OPERATING INSTRUCTIONS

1. **Wear the Cap:** Place the baseball cap with the inserted flexible panel on your head, ensuring the red light emitters are facing your scalp.
2. **Power On:** Long press the power button on the battery pack to turn on the device. The red lights will illuminate when the cap is properly worn on your head. If removed, the lights will automatically shut off as a safety feature.
3. **Session Duration:** The default session duration is 12 minutes. The device is designed for optimal results with consistent use.
4. **Frequency:** Use the device as recommended by your healthcare professional or as per the product guidelines for optimal hair regrowth.
5. **Auto Shut-off:** The device will automatically turn off after the programmed session duration.

Your browser does not support the video tag.

Video: Official GroWell demonstration of the Red Light Therapy Hair Regrowth Cap, showing how to wear and activate the device. This video is provided by the seller, Apira Science, Inc.

6. MAINTENANCE

- **Cleaning:** Gently wipe the flexible panel with a soft, dry cloth. Do not use abrasive cleaners or immerse the device in water.
- **Storage:** Store the cap and components in a cool, dry place away from direct sunlight and extreme temperatures.
- **Battery Care:** To prolong battery life, avoid fully discharging the battery frequently. Charge it regularly, even if not in use for extended periods.

7. TROUBLESHOOTING

Problem	Possible Cause	Solution
Device does not turn on.	Battery is not charged or not connected properly. Safety sensor not activated.	Ensure battery pack is fully charged and securely connected. Make sure the cap is worn correctly on your head to activate the sensor.
Lights flicker or are dim.	Low battery charge. Loose connection.	Recharge the battery pack. Check all cable connections.
Device turns off unexpectedly.	Session completed. Low battery. Cap shifted position.	This is normal if the session duration is complete. Recharge battery. Adjust cap position to ensure sensor contact.

8. SPECIFICATIONS

- **Model:** B0DV19V3KX
- **Brand:** GroWell
- **UPC:** 860013346409
- **Batteries:** 1 Lithium Polymer battery (included)
- **Light Wavelength:** 655nm (Red Light)
- **FDA Clearance:** Yes

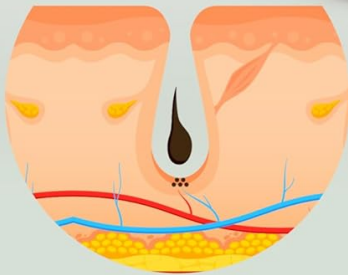
9. WARRANTY AND SUPPORT

For warranty information, product support, or to purchase replacement parts, please visit the official GroWell website or contact customer service through your retailer. Keep your proof of purchase for warranty claims. Manufacturer: GroWell (Apira Science, Inc)

10. ADDITIONAL INFORMATION

HOW GROWELL WORKS

CLINICALLY TESTED
RED LIGHT THERAPY
FOR 100% EFFECTIVE
HAIR REGROWTH



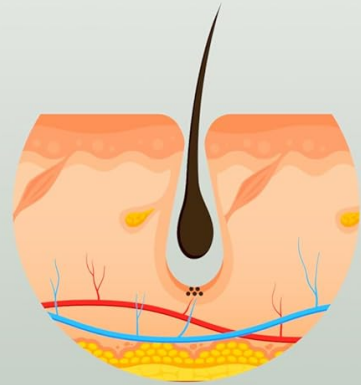
1

Laser light
energizes
follicles



2

Boosts
circulation and
nutrient delivery



3

Revitalizes
dormant follicles
for new, thicker,
healthier hair

Image: Clinical study results demonstrating hair regrowth and increased density after using GroWell devices.

RESULTS YOU CAN SEE

100% OF USERS SAW UP TO 93% HAIR GROWTH**

BEFORE



AFTER



**FDA
APPROVED**



**CLINICALLY
PROVEN**



**FULL SCALP
COVERAGE**

**The Growth of Human Scalp Hair in Males Using Visible Red Light Laser and LED Sources, Lasers in Surgery and Medicine. 46:601-607

Image: Infographic explaining the mechanism of action for GroWell Red Light Therapy, from energizing follicles to promoting thicker hair.