

Manuals+

[Q & A](#) | [Deep Search](#) | [Upload](#)

[manuals.plus](#) /

› [Simplicity](#) /

› [Simplicity SS3108U5 Misses' Semi-Fitted Unlined Vest, Flared Skirt and Wide Leg Pants Sewing Pattern Instruction Manual](#)

Simplicity SS3108U5

Simplicity SS3108U5 Misses' Semi-Fitted Unlined Vest, Flared Skirt and Wide Leg Pants Sewing Pattern Instruction Manual

Model: SS3108U5

INTRODUCTION

This instruction manual provides detailed guidance for creating the Simplicity SS3108U5 sewing pattern, which includes a semi-fitted unlined vest, a flared gored skirt, and wide-leg pants. This pattern is designed for misses' sizes 16-18-20-22-24 and is suitable for various fabric types such as boucle, cotton twill, denim, and linen blends.

S3108

Simplicity®



A



B



C

American
Sewing
Guild



Designed and
printed in USA.



A,B

Figure 1: Simplicity S3108 Pattern Envelope. This image displays the complete pattern envelope, featuring a model wearing the vest and skirt, alongside technical illustrations of all three garments included in the pattern.

SETUP AND PREPARATION

Before beginning your sewing project, careful preparation is essential. This section outlines the necessary steps to ensure a smooth and successful sewing experience.

1. Fabric and Notions Selection

Refer to the pattern envelope back for specific fabric recommendations and required notions. The pattern suggests fabrics such as boucle, cotton twill, denim, and linen blends. Lightweight fusible interfacing is also required.

S3108

Average

Moins Facile

MISSES' VEST, SKIRT AND PANTS

Suggested Fabrics: Boucle, Cotton Twill, Denim, Linen Blends. **Interfacing:** Lightweight Fusible.

Notions: A: Five ¾" (2.2cm) buttons. B,C: One 7" (18cm) invisible zipper.

Sizes	6	8	10	12	14	16	18	20	22	24
European	32	34	36	38	40	42	44	46	48	50

BODY MEASUREMENTS: Select pattern size based on body measurements

Bust	30½	31½	32½	34	36	38	40	42	44	46	Ins.
Waist	23	24	25	26½	28	30	32	34	37	39	"
Hip-9" below waist	32½	33½	34½	36	38	40	42	44	46	48	"
Back-neck to waist	15½	15¾	16	16¼	16½	16¾	17	17¼	17½	17¾	"

Vest A	45**	1¼	1¼	1¼	1¼	1¼	2	2	2	2	2¼	Yds.
	60**	1¼	1¼	1¼	1¼	1¼	1¼	1¼	1¼	1¼	1¼	"

Interfacing 20" - 2¼ yds.

Skirt B	45**	3¼	3¼	3¼	3¼	3¼	3¼	4	4	4¼	Yds.
	60**	2¼	2¼	2¼	2¼	2¼	2¼	2¼	2¼	2¼	"

Interfacing B,C

20" - ¾ yd.

Pants C	45**	2¼	2¼	2¼	2¼	2¼	2¼	2¼	2¼	2¼	Yds.
	60**	1¼	1¼	1¼	1¼	1¼	2¼	2¼	2¼	2¼	"

NOTE: Please refer to the sewing instructions for **FINISHED GARMENT MEASUREMENTS**.

*with nap **without nap

GILET, JUPE ET PANTALON POUR JEUNES FEMMES

Tissus Conseillés: Bouclé, Twill de coton, Denim, Lin mélangés. **Entoilage:** Thermocollant léger.

Mercerie: A: 5 boutons de 2.2cm. B,C: 1 fermeture à glissière invisible de 18cm.

Tailles	6	8	10	12	14	16	18	20	22	24
Françaises	34	36	38	40	42	44	46	48	50	52
Européen	32	34	36	38	40	42	44	46	48	50

MESURES DU CORPS: Choisissez la taille du patron basée sur les mesures du corps

Poitrine	78	80	83	87	92	97	102	107	112	117	cm
Taille	58	61	64	67	71	76	81	87	94	99	"

Hanches (23cm au-dessous de la taille)

	83	85	88	92	97	102	107	112	117	122	cm
Dos du cou à la taille	39.5	40	40.5	41.5	42	42.5	43	44	44	44.5	"

Gilet A	115cm*	1.7	1.7	1.7	1.7	1.7	1.8	1.8	1.8	1.8	1.8	m
	150cm*	1.6	1.6	1.6	1.6	1.6	1.6	1.6	1.6	1.6	1.7	"

Entoilage 51cm - 2.0m

Jupe B	115cm*	2.7	2.9	2.9	3.0	3.2	3.3	3.4	3.5	3.7	3.8	m
	150cm*	2.1	2.1	2.1	2.1	2.2	2.2	2.2	2.2	2.2	2.2	"

Entoilage B,C

51cm - 0.7m

Pantalon C	115cm*	2.1	2.1	2.2	2.5	2.5	2.5	2.5	2.6	2.6	2.6	m
	150cm*	1.5	1.5	1.6	1.6	1.6	1.9	1.9	2.1	2.1	2.2	"

NOTE: S'il vous plaît, reportez-vous aux instructions de couture pour les **MESURES DU VÊTEMENT FINI**.

*avec sens **sans sens



A



B



C

Figure 2: Pattern Back Details. This image shows the reverse side of the pattern envelope, detailing fabric suggestions, required notions, body measurements, and finished garment measurements for all sizes.

2. Sizing and Pattern Piece Selection

Carefully select your size based on your body measurements, not just your ready-to-wear size. The pattern includes sizes 16-18-20-22-24. Identify and cut out the correct pattern pieces for your chosen garment and size.

- **Vest (View A):** Semi-fitted, unlined, with princess seams, front button opening, and flaps.
- **Flared Skirt (View B & C):** Gored skirt with stitched hem. Views B and C feature a contoured waistband and invisible side zipper.
- **Wide Leg Pants (View C):** Fitted through the hip with side front pockets.

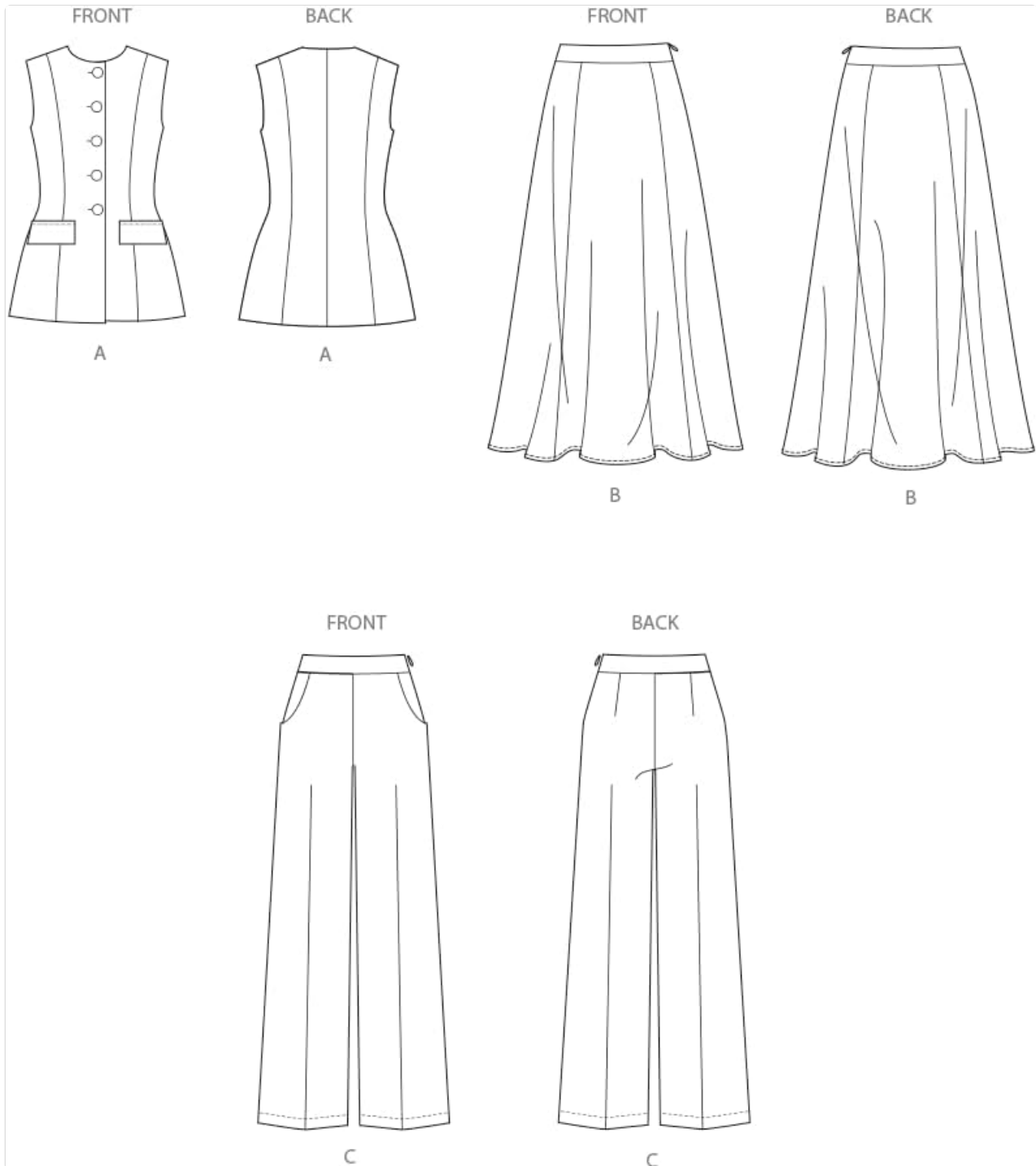


Figure 3: Garment Line Drawings. This image provides clear line drawings of the front and back views for the vest (A), skirt (B), and wide-leg pants (C), illustrating their design details.

OPERATING (SEWING INSTRUCTIONS)

Follow these step-by-step instructions for assembling each garment. Always refer to the detailed instructions provided within your

physical pattern packet for specific seam allowances and construction techniques.

1. Vest Construction (View A)

The vest features a semi-fitted silhouette with princess seams for shaping. It includes a front button opening and functional flaps.

1. Prepare all pattern pieces, applying interfacing where indicated.
2. Stitch princess seams on the front and back vest pieces.
3. Assemble the front and back sections at the shoulder and side seams.
4. Construct and attach the front flaps.
5. Finish the neckline and armholes according to pattern instructions.
6. Create buttonholes and attach buttons to the front opening.
7. Hem the lower edge of the vest.





Figure 4: Vest Illustration. This image provides a detailed illustration of the vest, highlighting its semi-fitted design, princess seams, and front button closure with flaps.





Figure 5: Model Wearing Vest (Close-up). A close-up view of the model wearing the vest, showcasing the fabric texture, button details, and the fit of the garment.

2. Flared Skirt Construction (Views B & C)

The skirt is a flared, gored design with a stitched hem. Views B and C include a contoured waistband and an invisible side zipper.

1. Assemble the gored skirt panels.
2. Install the invisible side zipper.
3. Attach the contoured waistband.
4. Finish the hem with a stitched finish.





Figure 6: Flared Skirt Illustration. This image illustrates the full, flared silhouette of the gored skirt, demonstrating its flow and design.

3. Wide Leg Pants Construction (View C)

These wide-leg pants are fitted through the hip and feature practical side front pockets.

1. Construct and attach the side front pockets.
2. Sew the inner leg and outer leg seams.

3. Join the front and back sections at the crotch seam.
4. Install the waistband.
5. Hem the wide leg openings.



Figure 7: Wide Leg Pants Illustration. This image provides an illustration of the wide-leg pants, showcasing their relaxed fit and the placement of the side front pockets.



Figure 8: Model Wearing Vest and Skirt (Back View). This image shows the model from the back, wearing the vest and skirt, providing a view of the garment's drape and fit from behind.

Maintenance of Finished Garments

Proper care will extend the life of your handmade garments. Always refer to the care instructions for the specific fabric you used.

- Washing:** Follow the care instructions for your chosen fabric. Most cottons and linens can be machine washed on a gentle cycle with cold water. Boucle may require dry cleaning or hand washing.
- Drying:** Air dry or tumble dry on low, depending on fabric type. Avoid high heat to prevent shrinkage or damage.
- Ironing:** Iron on the appropriate temperature setting for your fabric. Use a pressing cloth if necessary.
- Storage:** Store garments on hangers to maintain their shape, especially the vest and skirt.

Troubleshooting Common Sewing Issues

Even experienced sewers encounter challenges. Here are some common issues and potential solutions:

Issue	Possible Cause	Solution
Fabric puckering	Incorrect tension, dull needle, wrong stitch length	Adjust tension, change needle, increase stitch length
Uneven seams	Inconsistent seam allowance, fabric stretching	Use a seam guide, pin frequently, avoid pulling fabric
Zipper sticking	Fabric caught, zipper not aligned	Check for trapped fabric, re-align zipper, apply zipper lubricant
Garment fit issues	Incorrect size selection, inaccurate measurements	Double-check measurements, make a muslin (test garment), adjust pattern pieces

Specifications

Key details and specifications for the Simplicity SS3108U5 sewing pattern.

Product Name: Simplicity SS3108U5 Misses' Semi-Fitted Unlined Vest, Flared Skirt and Wide Leg Pants Sewing Pattern

Brand: Simplicity

Model Number: SS3108U5

Design Code: S3108

Sizes Included: Misses' 16-18-20-22-24

Garment Types: Semi-fitted unlined vest, flared gored skirt, wide leg pants

Recommended Fabrics: Boucle, cotton twill, denim, linen blends

Required Notions: Buttons (for vest), invisible zipper (for skirt), lightweight fusible interfacing

Country of Origin: USA (Designed and Printed)




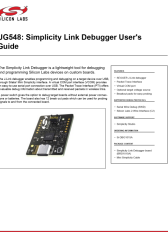


Product Dimensions: 0.36 x 6 x 8.5 inches (Packet)

Item Weight: 4.8 ounces



Figure 9: Model Wearing Vest and Skirt (Front View). This image presents the model from the front, showcasing the complete ensemble of the vest and skirt, illustrating the overall look and fit.

Related Documents - SS3108U5

	<p>Crathco Simplicity Bubbler Cold Beverage Dispensers Operator Manual</p> <p>This operator manual provides comprehensive instructions for the installation, operation, cleaning, and troubleshooting of Crathco Simplicity Bubbler Cold Beverage Dispensers. It covers various models including CS-2E, CS-1D, CS-3L, CS-4E, CS-2D, and CS-3D series, detailing their specifications, parts, and maintenance procedures to ensure safe and efficient use.</p>
	<p>Crathco Simplicity Bubbler Cold Beverage Dispenser Operator Manual</p> <p>Operator manual for Crathco Simplicity Bubbler Cold Beverage Dispensers by Grindmaster, covering safety information, specifications, installation, product preparation and use, daily and weekly cleaning, troubleshooting, and basic machine parts.</p>
	<p>Crathco Simplicity™ Bubbler Cold Beverage Dispensers Operator Manual</p> <p>Operator manual for Crathco Simplicity™ Bubbler Cold Beverage Dispensers, covering safety, specifications, installation, operation, cleaning, troubleshooting, and parts lists. Includes models CS-2E, CS-1D, CS-3L, CS-4E, CS-2D, CS-3D.</p>
	<p>UG548: Simplicity Link Debugger User's Guide</p> <p>User's guide for the Silicon Labs Simplicity Link Debugger (UG548), a lightweight tool for debugging and programming Silicon Labs devices. It features J-Link debugging, a virtual COM port, Packet Trace Interface, and supports SWD and C2 protocols. Includes hardware overview, specifications, power supply modes, and configuration details.</p>
	<p>Silicon Labs RAIL SDK 2.18.3.0 GA Release Notes</p> <p>Release notes for the Silicon Labs RAIL SDK 2.18.3.0 GA, part of the Simplicity SDK Suite 2024.12.3. This document details new features, improvements, fixed issues, known issues, deprecated items, and removed items for the RAIL SDK.</p>
	<p>Weil-McLain Simplicity High-Efficiency Gas Boiler Limited Residential Warranty</p> <p>Details the limited warranty terms and conditions for the Weil-McLain Simplicity High-Efficiency Gas Boiler for residential use, including coverage, duration, exclusions, and claim procedures.</p>

