

PawHut D51-479V00BK

PawHut Guinea Pig Cage and Small Animal Playpen Instruction Manual

Model: D51-479V00BK

1. INTRODUCTION

This manual provides instructions for the assembly, operation, and maintenance of your PawHut Guinea Pig Cage and Small Animal Playpen, model D51-479V00BK. Please read these instructions carefully before use and retain them for future reference. This product is designed for indoor use only.

2. SAFETY INFORMATION

No specific safety warnings are applicable beyond general pet care guidelines. Always ensure the cage is securely assembled and placed on a stable, level surface. Regularly inspect the cage for any damage or loose parts that could harm your pet. Keep small children and other pets supervised around the enclosure.

3. PACKAGE CONTENTS

Verify that all components are present before beginning assembly. The package should contain all necessary panels, connectors, the waterproof bottom liner, ramp, and perch. If any parts are missing or damaged, please contact customer support.



Image 3.1: Overview of the PawHut Guinea Pig Cage and Playpen.

4. SETUP AND ASSEMBLY

Assembly is required for this product. Follow the steps below to set up your cage.

1. **Unpack Components:** Carefully remove all parts from the packaging and lay them out on a clean, flat surface.
2. **Assemble Wire Panels:** Connect the wire panels to form the main structure of the cage. Ensure all latches and connectors are securely fastened.
3. **Install Bottom Liner:** Place the waterproof Oxford fabric bottom liner into the base of the assembled wire structure. Ensure it fits snugly to prevent leaks.
4. **Attach Ramp and Perch:** Secure the ramp and perch within the cage as desired. These accessories provide enrichment and exercise for your pets.



Image 4.1: Diagram showing the overall dimensions of the cage (121L x 61W x 61H cm).



Image 4.2: Close-up view of the cage latches, ensuring secure closure.

MORE DETAILS



Latch



Door



Ramp



Perch



Image 4.3: Detailed view of the latch, door, ramp, and perch components.

5. OPERATING INSTRUCTIONS

5.1 Convertible Design: Cage to Playpen

The cage features a versatile 2-in-1 design. To convert the cage into a playpen, simply remove the top wire section. This provides an open-top enclosure for your small animals to explore.

CONVERTIBLE DESIGN

Remove the top
and get a playpen

Pet Playpen

Small Animal Cage

Image 5.1: Illustration of the cage in both its enclosed and open-top playpen configurations.

5.2 Separate Areas

The cage includes separated spaces, allowing for cohabitation or temporary separation of pets. A middle door can be opened to connect these areas, providing a larger shared space for interaction.



Image 5.2: View of the internal divider and the door that connects the separate areas within the cage.

5.3 Ramp and Perch Usage

The included ramp and perch are designed to encourage activity and provide different levels for your pets. Ensure they are stable and accessible for your specific animal.



Image 5.3: Close-up of the ramp leading to an elevated perch area inside the cage.

6. MAINTENANCE

6.1 Cleaning the Waterproof Bottom Liner

The Oxford fabric bottom liner is waterproof, making cleanup easy. Regularly remove bedding and waste. The liner can be wiped clean with a damp cloth and mild, pet-safe detergent. Ensure it is completely dry before replacing bedding.

WATERPROOF BOTTOM LINER

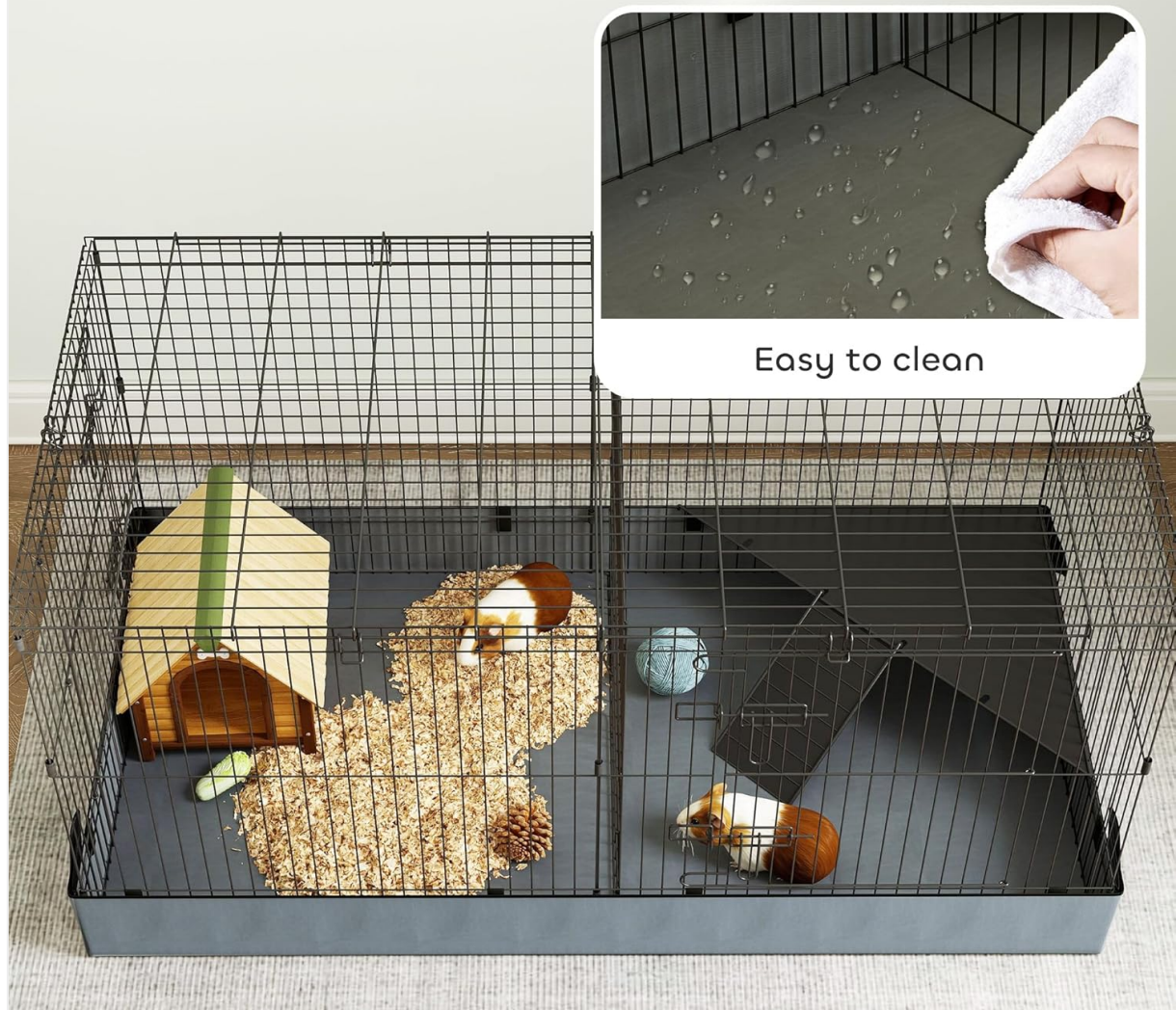


Image 6.1: Illustration highlighting the waterproof bottom liner and its ease of cleaning.

6.2 General Cage Cleaning

Periodically clean the entire wire structure with a pet-safe disinfectant. Ensure all surfaces are rinsed thoroughly and dried before returning your pets to the cage.

7. TROUBLESHOOTING

If you encounter any issues with your PawHut cage, consider the following:

- **Stability Issues:** Ensure all wire panels are correctly interlocked and latches are secured. Place the cage on a flat, stable surface.
- **Liner Fit:** If the bottom liner does not fit correctly, re-check the assembly of the wire frame to ensure it is square.
- **Pet Behavior:** If pets are chewing on parts of the cage, ensure they have adequate chew toys and enrichment items.

8. SPECIFICATIONS

Model Number	D51-479V00BK
Overall Dimensions	121L x 61W x 61H cm (47.6"L x 24"W x 24"H)
Material	Alloy Steel, Polyester (Oxford fabric liner)
Product Weight	8.62 kg
Special Features	Removable Top (2-in-1 design), Waterproof Bottom Liner, Separate Areas, Ramp, Perch
Intended Use	Indoor

9. WARRANTY AND SUPPORT

For warranty information or customer support, please refer to the documentation included with your purchase or contact the retailer where the product was acquired. You may also visit the official PawHut website for further assistance.

10. OFFICIAL PRODUCT VIDEOS

No official product videos from the seller were found that meet the specified criteria for embedding (m3u8 format with 'Seller' creator type).