

Manuals+

[Q & A](#) | [Deep Search](#) | [Upload](#)

manuals.plus /

› [NEEWER](#) /

› [NEEWER Q6 600Ws 2.4G TTL Outdoor Studio Flash User Manual](#)

NEEWER Q6

NEEWER Q6 600Ws 2.4G TTL Outdoor Studio Flash User Manual

Model: Q6

INTRODUCTION

This manual provides detailed instructions for the safe and effective use of your NEEWER Q6 600Ws 2.4G TTL Outdoor Studio Flash. The Q6 is a high-performance outdoor strobe light designed for professional photography, featuring 600Ws power output, advanced app control, and versatile flash modes. Please read this manual thoroughly before operating the device to ensure optimal performance and longevity.

WHAT'S IN THE BOX

Carefully unpack your NEEWER Q6 flash and verify that all the following items are included:

- 1 x Q6 Flash Strobe
- 1 x Standard Reflector
- 1 x Lithium Battery
- 1 x Reflector Cap
- 1 x Handle
- 1 x Power Cord (US Plug)
- 1 x Power Adapter
- 1 x Carrying Case

PACKAGE CONTENTS



1 x Q6 Flash Strobe



1 x Carrying Case



1 x Standard Reflector



1 x Handle



1 x Lithium Battery



1 x Reflector Cap



1 x Power Adapter



1 x Power Cord

Image: The NEEWER Q6 package contents, including the flash unit, standard reflector, lithium battery, reflector cap, handle, power cord, power adapter, and carrying case.

KEY FEATURES

- **600Ws Powerful Output:** Provides substantial light output for various photographic scenarios.
- **App Control & Enhanced UI:** Control flash modes, menu functions, and firmware updates via a smartphone app. Features dual TFT color screens and color groupings for intuitive operation.
- **Constant Color Temperature:** Maintains a stable 5700K ($\pm 100K$) color temperature across the entire power range, ensuring consistent color reproduction.
- **Precise Flash Power Control:** Adjustable from 1/512 to full power (1/1) in 0.1 increments.
- **Versatile Flash Modes:** Supports TTL, Manual, and Multi (Stroboscopic) flash modes, along with HSS (up to 1/8000s), S1/S2 optical slave modes, C.Fn custom settings, Burst Mode, and time-lapse photography.
- **Expanded 2.4G Wireless System:** Offers wireless control for five groups (A/B/C/D/E), 32 channels, and 99 IDs up to 100m (328'). Compatible with NEEWER QZ/QPRO triggers and Godox 2.4G X system (as a slave).
- **High-Capacity Lithium Battery:** A 28.8V/3000mAh battery delivers approximately 400 full power flashes with

a rapid recycling time of 0.01-0.9s.

- **Ultra Short Flash Durations:** Capable of flash durations from 1/209s to 1/10989s for freezing fast-moving subjects.
- **30W Bi-Color LED Modeling Lamp:** Functions as a continuous light source with adjustable color temperature (2700K-6500K) and brightness levels.



600Ws POWERFUL OUTPUT

Constant color temperature 5700K±100K

Image: The NEEWER Q6 studio flash in an outdoor setting, illustrating its powerful 600Ws output and constant color temperature of 5700K.



1/10989s
FLASH DURATION UP TO

Ultra fast recharge in **0.01-0.9s**,
no waiting required to capture every breathtaking moment precisely.

Image: A dancer captured in motion, demonstrating the NEEWER Q6's ability to achieve flash durations up to 1/10989s for freezing action.

SETUP

1. Battery Installation

Insert the provided 28.8V/3000mAh lithium battery into the battery compartment on the side of the Q6 flash unit. Ensure it clicks securely into place. The battery features indicator lights to show its charge level.

28.8V/3000mAh LITHIUM BATTERY

Can provide 400 full power flashes.



Image: A close-up view of the NEEWER Q6 flash, showing the removable 28.8V/3000mAh lithium battery and its DC charging port.

2. Attaching the Handle and Reflector

- Attach the handle to the designated mounting point on the flash unit for handheld use or for mounting on a light stand.
- Mount the standard reflector onto the Bowens mount at the front of the flash by aligning the three pins and twisting clockwise until it locks.

3. Powering On/Off

Press and hold the power button located on the unit to turn the flash on or off. The TFT color screens will illuminate upon startup.

OPERATING INSTRUCTIONS

1. User Interface and Navigation

The Q6 features two TFT color screens for clear display of settings. Use the control dial and buttons to navigate

through menus and adjust parameters. The color grouping feature (A-E) allows for distinct identification and management of multiple flash units.



Image: A close-up of the NEEWER Q6's dual color TFT screens, showing group settings (A, B, C, D, E) for distinct display and management.

2. Flash Modes

The Q6 supports the following flash modes:

- **TTL (Through-The-Lens):** Automatic flash exposure compatible with Canon E-TTL II, Nikon i-TTL, Sony TTL, and Fujifilm TTL systems.
- **Manual (M):** Allows precise manual control over flash power output from 1/512 to 1/1 in 0.1-stop increments.
- **Multi (Stroboscopic):** Fires a series of rapid flashes during a single exposure, adjustable up to 100 times (100 Hz).
- **S1/S2 Optical Slave:** Triggers the flash optically from another flash unit.

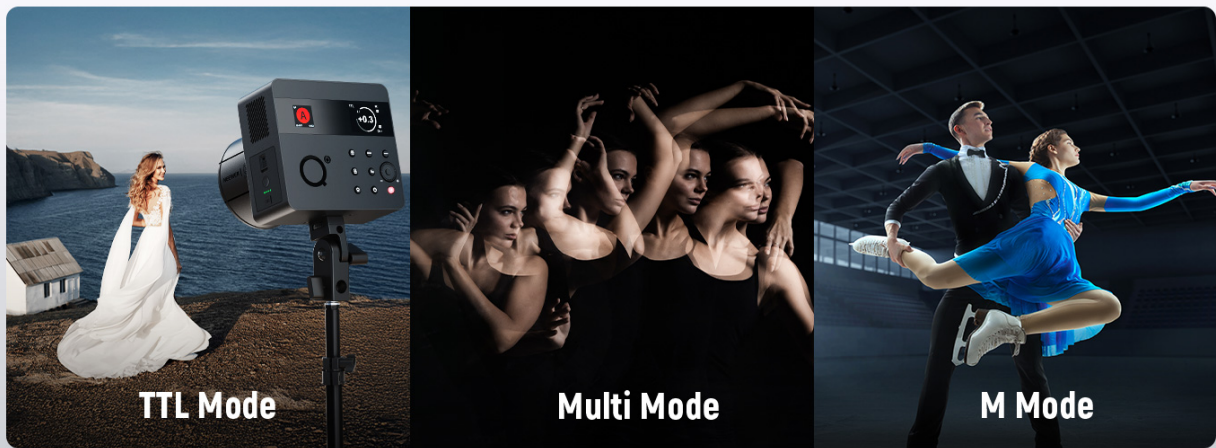


Image: Visual representation of the NEEWER Q6 operating in TTL, Multi, and Manual (M) flash modes, showcasing its versatility.

3. High-Speed Sync (HSS)

The Q6 supports High-Speed Sync (HSS) up to 1/8000s, allowing you to use wider apertures in bright conditions or freeze fast motion. It also supports front and rear curtain sync.

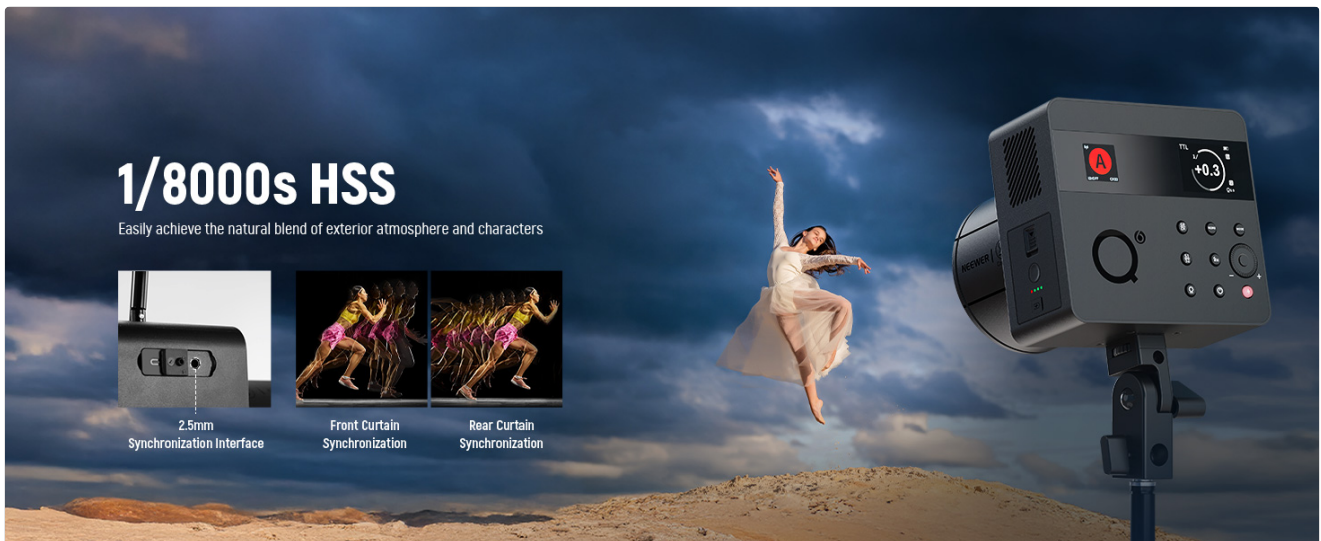


Image: The NEEWER Q6 flash highlighting its 1/8000s HSS capability and the 2.5mm synchronization interface, with examples of front and rear curtain synchronization.

4. 2.4G Wireless System & App Control

The Q6 integrates an expanded 2.4G wireless system for remote control. It can be controlled by NEEWER QZ or QPRO series triggers (sold separately) or function as a master/slave unit within the Q system. It is also compatible with Godox 2.4G X system (in RX COMPAT menu) and Sekonic L-858D light meter (with RT-GX module).

For advanced control, download the NEEWER app to your smartphone. The app allows for easy and quick parameter adjustments, group management, and firmware updates. Note that Q and X systems cannot be used simultaneously, and the latest firmware may be required for full compatibility.

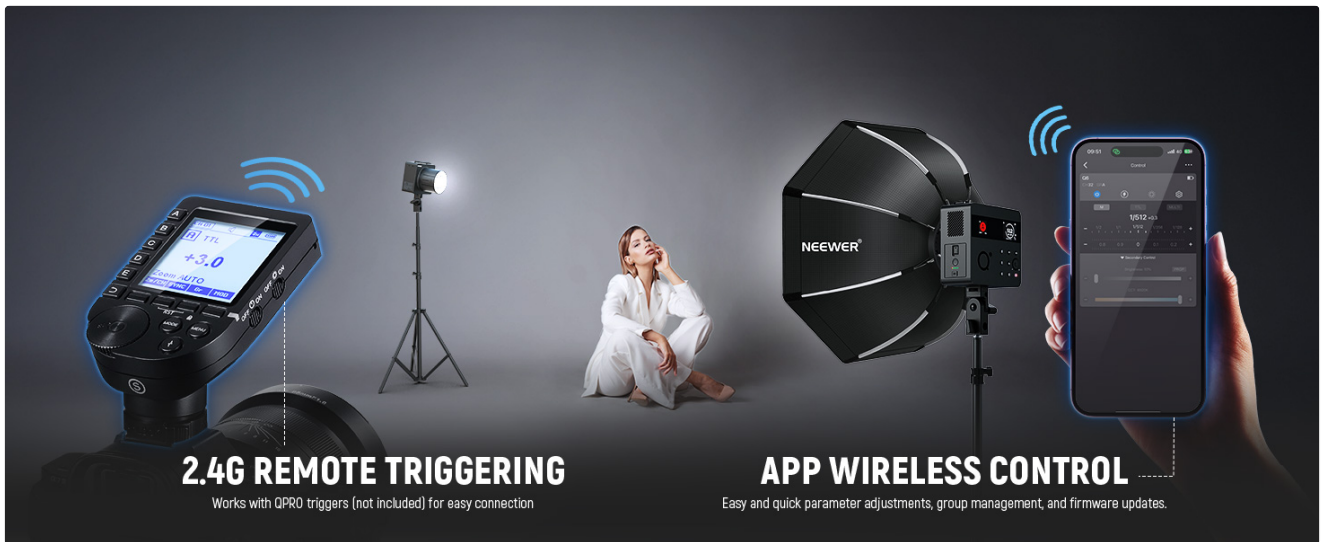


Image: The NEEWER Q6 flash demonstrating both 2.4G remote triggering via a dedicated trigger and wireless control through a smartphone application.

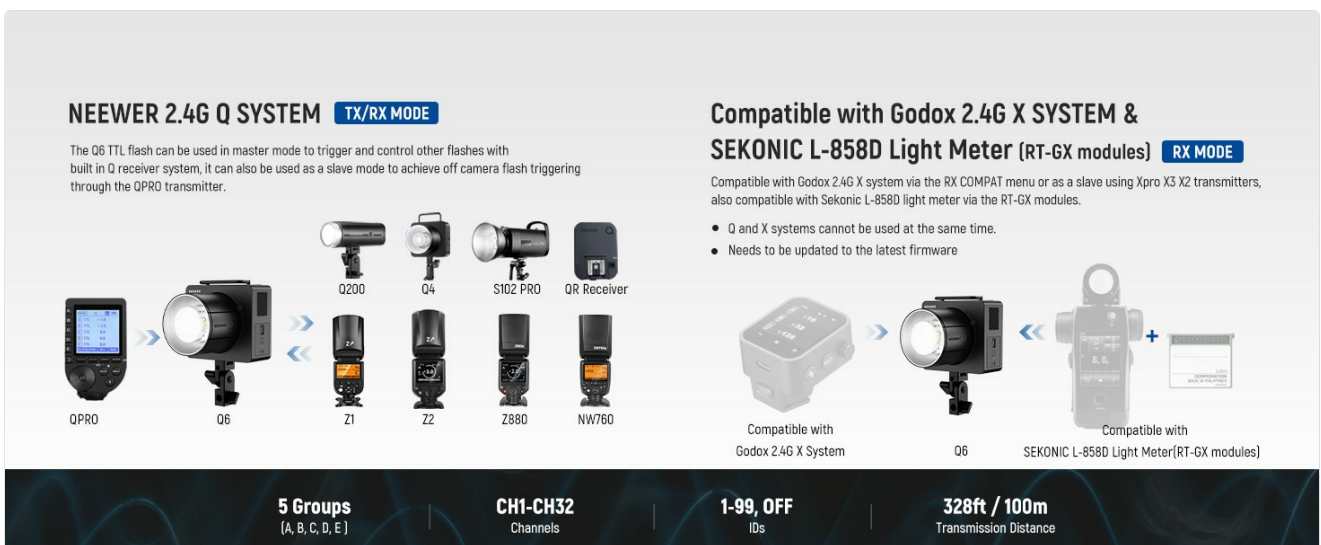


Image: A diagram illustrating the NEEWER Q6's compatibility within the NEEWER 2.4G Q System (TX/RX mode) and its RX compatibility with Godox 2.4G X System and Sekonic L-858D Light Meter (RT-GX modules).

5. 30W Bi-Color LED Modeling Lamp

The integrated 30W LED modeling lamp can be used as a continuous light source for video recording or to preview lighting effects. It offers adjustable color temperature from 2700K to 6500K and 10 levels of brightness.

30W MODELING LIGHT

Double as a continuous light with constant lighting for video recording.

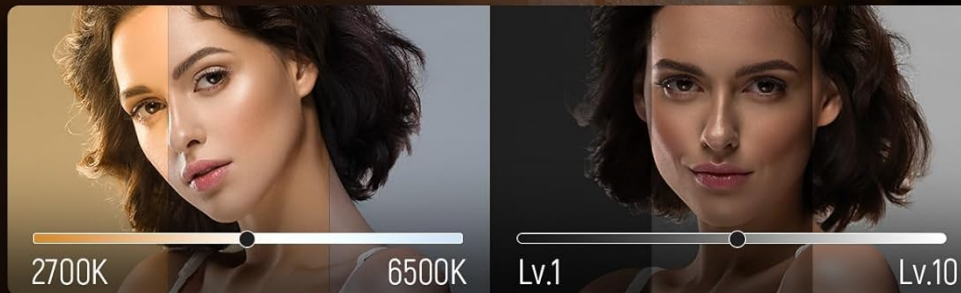


Image: The NEEWER Q6 flash showcasing its 30W bi-color LED modeling light, highlighting the Bowens mount and examples of color temperature adjustments from 2700K to 6500K.

MAINTENANCE

1. Battery Charging

Charge the lithium battery using only the included power adapter and power cord. Connect the adapter to the DC charging port on the battery. The battery indicator lights will show charging status. Do not use unauthorized chargers or power sources.

2. Cleaning

Wipe the flash unit with a soft, dry cloth. For stubborn dirt, a slightly damp cloth can be used, followed by immediate drying. Avoid using harsh chemicals or abrasive materials.

3. Storage

When not in use for extended periods, store the flash in its carrying case in a cool, dry place. Ensure the battery is

partially charged (around 50%) before long-term storage to preserve battery health.

TROUBLESHOOTING

- **Flash not firing:** Check battery level, ensure the flash is powered on, and verify trigger connection/settings.
- **Inconsistent exposure:** Review flash mode settings (TTL/Manual), check camera's exposure settings, and ensure proper trigger synchronization.
- **Wireless connection issues:** Confirm channel and group settings match between flash and trigger/app. Ensure no interference from other 2.4G devices. Update firmware if necessary.
- **Overheating warning:** Allow the unit to cool down. Avoid rapid, consecutive full-power flashes to prevent overheating.

If you encounter persistent issues, refer to the detailed user manual PDF or contact NEEWER customer support.

SPECIFICATIONS

The following image provides a detailed overview of the NEEWER Q6's technical specifications:

SPECIFICATIONS	
Product Model	Q6
Wireless Slave Unit Mode	Radio Mode (Compatible with Canon E-TTL II, Nikon I-TTL, Sony)
Flash Output Power	600Ws
Multi Flash Mode	TTL / M / MULTI
Stroboscopic Flash	Flash Frequency 1-100Hz, Flash Count 1-100 Times
Sync Method	Front Curtain Sync, Rear Curtain Sync, High-Speed Sync
Delay Triggering	0.01-30s
Burst Mode	ON/OFF
Constant color temperature mode	5700K±100K
Mask	✓
Fan	✓
BEEP	✓
Flash Duration	Normal Flash: 1/209 to 1/10989 seconds Constant Color Temperature: 1/181 to 1/5263 seconds
Display Screen	Two Color Screens
Model Lamp (LED)	
CCT	2700K-6500K
CRI	95+
TLCI	98+
Trigger Method	Optical Trigger/3.5mm Sync Trigger/2.4G Wireless Trigger
Control method	Panel Control/APP Control /2.4G Control
Power Supply	Lithium Battery, AC Dummy Battery(Sold Separately)
Battery	Capacity 86.4Wh, Rated Voltage 28.8V, Current: 3000mAh
Recycle Time	0.01-0.9s
2.4G Wireless System	
Wireless Function	Slave Unit, Off
Subordinate Groups	A\B\C\D\E
Wireless Triggering Distance	100 meters
Channel	CH1-CH32
Wireless ID	OFF, 1-99

Image: A comprehensive table detailing the specifications of the NEEWER Q6 flash, including product model, flash output, flash modes, sync methods, battery capacity, recycle time, wireless system details, and modeling lamp characteristics.

Key specifications include a flash output of 600Ws, TTL/M/Multi flash modes, 1/8000s HSS, a 28.8V/3000mAh lithium battery, and a 30W bi-color LED modeling lamp. The 2.4G wireless system offers a transmission distance of 100 meters across 32 channels and 5 groups.

WARRANTY & SUPPORT

For detailed warranty information and customer support, please refer to the official NEEWER website or the documentation included with your product. A comprehensive user manual in PDF format is also available for download:

[Download User Manual \(PDF\)](#)

For technical assistance or service inquiries, please contact NEEWER customer support through their official

channels.

© 2025 NEEWER. All rights reserved.