



Manuals.plus /

› AQUA TRU /

› Aqua TRU Carafe Countertop Water Purifier User Manual

AQUA TRU AquaTru Carafe

Aqua TRU Carafe Countertop Water Purifier User Manual

Model: AquaTru Carafe

Brand: AQUA TRU

1. PRODUCT OVERVIEW

The Aqua TRU Carafe is a countertop water purification system utilizing 4-stage Ultra Reverse Osmosis technology. It is designed to remove a wide range of contaminants from tap water without requiring plumbing or complex installation. This system provides purified water collected in a 64 oz glass carafe.



Image: Front view of the Aqua TRU Carafe water purifier with its glass carafe.

Key Features:

- 4-Stage Ultra Reverse Osmosis Purification.
- No plumbing or installation required.
- Includes a 64 oz glass carafe for purified water.
- Sleek control panel with filter change and maintenance alerts.
- Quick-change insert and snap filters.

Filtration Technology:

The Aqua TRU Carafe employs a 4-stage filtration process:

1. **Pre/Carbon Filter (Stages 1 & 2):** Removes larger particles like sediment and rust, and activated carbon removes chlorine.
2. **Reverse Osmosis (R.O.) Filter (Stage 3):** Filters out inorganic chemicals such as lead, chromium, arsenic, uranium, nitrates, and other heavy metals.
3. **VOC Carbon Filter (Stage 4):** Activated coconut block carbon filter removes organic compounds, including PFAS.

Tested, Tried and TRU

REMOVES
15X MORE
CONTAMINANTS
THAN TYPICAL
PITCHER FILTERS

Tested and Certified to NSF/ANSI Standards by IAPMO to remove 83 contaminants including Lead, Chlorine, Fluoride, Nitrates, PFAS and many more.



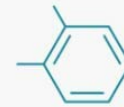
ARSENIC



LEAD



CHLORINE



PER- AND
POLYFLUOROALKYL
SUBSTANCES
(PFAS)

Image: Diagram of the 4-stage filtration process.

2. PACKAGE CONTENTS

Upon unpacking, ensure all items are present:

- Aqua TRU Carafe Water Purifier Unit
- Glass Carafe (64 oz)
- Pre/Carbon Filter (Stages 1 & 2)
- Reverse Osmosis (R.O.) Filter (Stage 3)
- VOC Carbon Filter (Stage 4)
- Power Adapter
- User Manual (this document)

3. SETUP AND INITIAL USE

3.1 Unboxing and Placement

1. Carefully remove all components from the packaging.

2. Place the Aqua TRU Carafe on a flat, stable surface near a power outlet. Ensure adequate space around the unit for ventilation and access.
3. Remove any protective films or packaging materials from the unit and carafe.

3.2 Filter Installation

The Aqua TRU Carafe uses quick-change filters. Follow these steps to install them:

1. Lift the top cover of the Aqua TRU unit to expose the filter compartments.
2. Insert the Pre/Carbon Filter (labeled 1&2) into the leftmost compartment. Align the filter with the slot and push down until it clicks into place.
3. Insert the Reverse Osmosis (R.O.) Filter (labeled 3) into the middle compartment, pushing down until it clicks.
4. Insert the VOC Carbon Filter (labeled 4) into the rightmost compartment, pushing down until it clicks.
5. Ensure all filters are securely seated.
6. Close the top cover.



Image: Filter compartments with filters installed.

3.3 Initial Flushing Procedure

Before consuming water, the system requires an initial flushing to prepare the filters:

1. Fill the rear tap water tank with regular tap water.
2. Place the empty glass carafe in the front collection area.
3. Plug in the power adapter. The unit will begin the purification cycle.
4. Allow the unit to complete four full purification cycles. Discard the purified water from each of these initial cycles. This primes the filters and removes any manufacturing residues.
5. After four cycles, the Aqua TRU Carafe is ready for regular use.

4. OPERATION

4.1 Filling the Tap Water Tank

1. Ensure the glass carafe is empty and placed in the front collection area.
2. Remove the rear tap water tank.
3. Fill the tank with tap water up to the MAX fill line.
4. Carefully place the filled tap water tank back into the unit.

4.2 Purification Process

Once the tap water tank is filled and the carafe is in place, the unit will automatically begin the purification process. The 'Purifying' indicator light will glow.



Image: Control panel indicators and functions.

- **Empty & Refill Tap Tank:** Illuminates when the waste water tank needs to be emptied and the tap tank refilled.
- **Purifying:** Glows to indicate the unit is actively purifying water.
- **Maintenance:** Alerts you if descaling maintenance is required due to reduced filtering time or flow rate.
- **Change Filter:** Indicates which filter needs replacement.
- **Reset:** Used to manually reset filter alerts after replacement.



Image: Aqua TRU Carafe during the purification process.

4.3 Dispensing Purified Water

Once the purification cycle is complete, the purified water will be in the glass carafe. Simply remove the carafe from the unit to pour and serve.



Image: Pouring purified water from the glass carafe.

5. MAINTENANCE

5.1 Filter Replacement

The lifespan of filters varies based on usage and water quality. The system's control panel will indicate when a filter needs replacement. Generally, filters last:

- Pre/Carbon Filter (Stages 1 & 2): Approximately 6 months.
- VOC Carbon Filter (Stage 4): Approximately 6 months.
- Reverse Osmosis (R.O.) Filter (Stage 3): Approximately 2 years.

To replace a filter:

1. Unplug the unit from the power outlet.
2. Lift the top cover.
3. Gently pull up on the tab of the filter to be replaced to remove it.
4. Insert the new filter into the corresponding compartment, aligning it and pushing down until it clicks.
5. Close the top cover.
6. Plug the unit back in. Press and hold the 'Reset' button until the filter alert light turns off, indicating

the filter timer has been reset.

Only use genuine Aqua TRU Carafe replacement filters. Filters for other AquaTru models (Classic, Connect, Under Sink) are not compatible.

5.2 Cleaning the Unit and Carafe

- Regularly clean the glass carafe with mild soap and water.
- Wipe the exterior of the Aqua TRU unit with a damp cloth. Do not immerse the unit in water.
- Empty and clean the waste water tank regularly to prevent mineral buildup.

5.3 Descaling

If the 'Maintenance' light illuminates, it indicates that descaling may be required due to mineral buildup affecting filtration efficiency. Refer to the Aqua TRU website or contact customer support for descaling instructions and recommended descaling kits.

6. TROUBLESHOOTING

If you encounter issues with your Aqua TRU Carafe, refer to the following common problems and solutions:

Problem	Possible Cause	Solution
Unit not purifying / No water dispensed	No power; Tap tank empty; Carafe not in place; Filters not installed correctly.	Check power connection; Refill tap tank; Ensure carafe is correctly seated; Reinstall filters securely.
'Change Filter' light on prematurely	Filter timer not reset; High water usage; Poor water quality.	Press and hold 'Reset' button after filter replacement; Replace filter if due; Consider water quality.
Slow purification process	Clogged filters; Mineral buildup (descaling needed).	Replace indicated filters; Perform descaling maintenance.
Unusual taste or odor in purified water	New filters (initial flushing needed); Expired filters; Contamination.	Ensure initial flushing was completed; Replace filters if expired; Contact support if issue persists.
Water leaking from unit	Improperly seated filters or tanks; Unit damage.	Check that all filters and tanks are correctly and securely in place; Inspect unit for visible damage. If damage is present, discontinue use and contact customer support.

If the problem persists after attempting these solutions, please contact Aqua TRU customer support.

7. SPECIFICATIONS

Feature	Detail
Model Name	AquaTru Carafe (AT100)
Product Dimensions	14"L x 7.5"W x 13"H
Weight	Approximately 14.5 Pounds
Installation Type	Countertop
Power Source	Corded Electric
Maximum Flow Rate	0.5 Gallons Per Minute
Supported Water TDS Level Maximum	1000 PPM
Special Feature	Heavy Duty, low maintenance, long-lasting filters, removes microplastics, PFAS

8. WARRANTY AND SUPPORT

8.1 Manufacturer's Warranty

The Aqua TRU Carafe is manufactured by AQUA TRU. For specific warranty details, including coverage duration and terms, please refer to the warranty card included with your product or visit the official AQUA TRU website. Keep your proof of purchase for warranty claims.

8.2 Customer Support

For technical assistance, replacement parts, or any questions regarding your Aqua TRU Carafe, please contact AQUA TRU customer support directly. Contact information can typically be found on the manufacturer's website or in the product packaging.

8.3 Return Policy

If purchased through Amazon, the standard return policy typically allows for returns within 30 days of receipt. Please refer to Amazon's return policy for the most current and detailed information.