

Kokido XTROVAC 320

KOKIDO XTROVAC 320 Cordless Pool Vacuum Instruction Manual

Model: XTROVAC 320 | Brand: Kokido

PRODUCT OVERVIEW

The KOKIDO XTROVAC 320 is a cordless, handheld pool vacuum designed for efficient spot cleaning and maintenance of small to medium-sized pools, spas, and hot tubs. It features optimized suction, dual interchangeable filters, and versatile cleaning heads to tackle various types of debris.

- **Designed for Pool Care:** This handheld vacuum is a complete set for keeping pools and spas clean. Ideal for spot cleaning above-ground pools, spas, and pools up to 20 feet. The nylon bristles on the vac head protect pool liners.
- **Dual Filtration System:** Offers two interchangeable filter modes. A 250µ durable steel filter captures gravel, sand, and leaves. A 106µ fine filter cone is available for cleaning fine sand and small particles. *Note: Not suitable for debris larger than 3 inches or very tiny particles like algae or silt.*
- **Optimized Suction:** Generates consistent suction at 16 gallons per minute (GPM) powered by rechargeable Lithium batteries. Provides approximately 50 minutes of run time and is IPX8 grade waterproof, suitable for both cold and warm water.
- **Cordless Versatility:** Includes two vacuum heads: an XL triangular pivoting head for general floor cleaning and a flat brush spot cleaner for hard-to-reach areas. Can be used in handheld mode for shallow areas, allowing access to every spot in the pool.
- **Lightweight & Maneuverable:** Weighs just 3.5 pounds and comes with a compact 72-inch sturdy aluminum pole, making it easy to navigate narrow spaces and corners, even with one hand. Compatible with standard pool poles for extended reach.

SETUP AND ASSEMBLY

Follow these steps to assemble and prepare your KOKIDO XTROVAC 320 for first use.

Package Contents

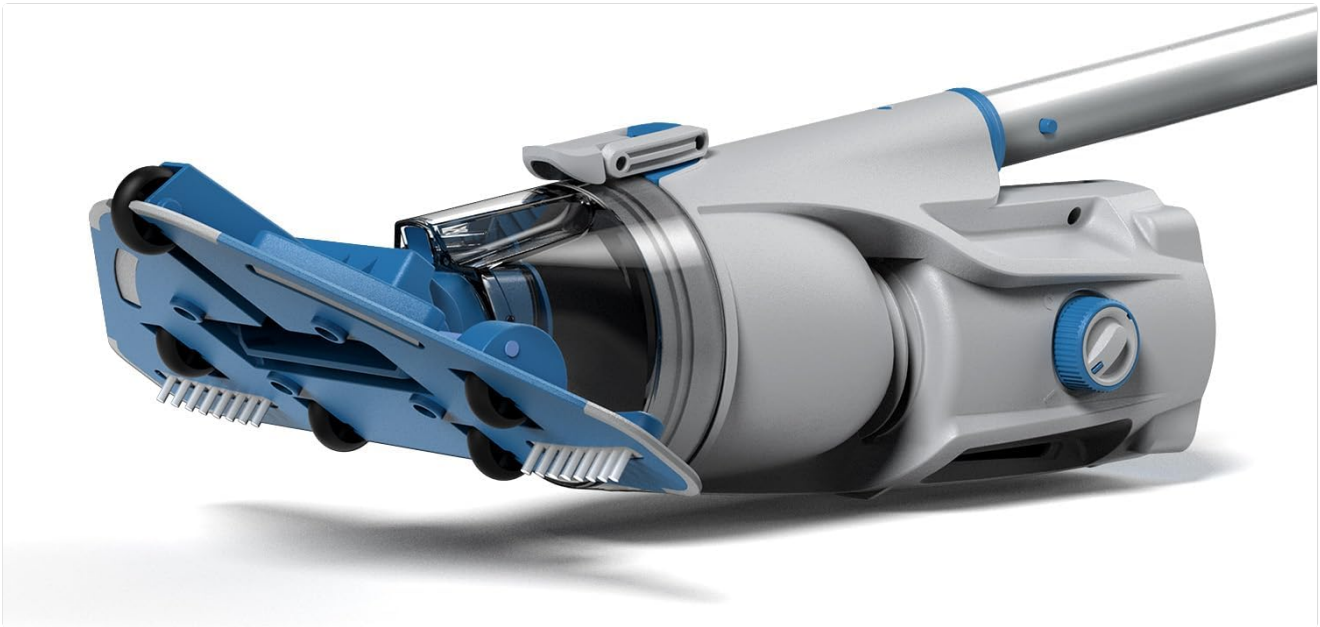
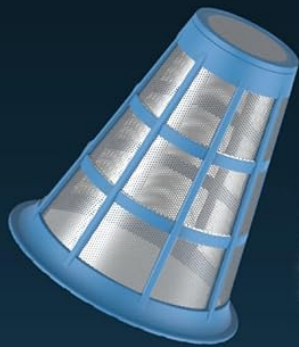


Figure 1: KOKIDO XTROVAC 320 Components. This image displays all parts included in the package, such as the main vacuum unit, the multi-section pole, two different cleaning heads, two types of filters, and the charging accessories.

Assembly Instructions

1. **Attach Vacuum Head:** Securely attach your preferred vacuum head (XL triangular pivoting head or flat brush) to the main vacuum unit.
2. **Insert Filter:** Choose either the 250 μ stainless steel filter for larger debris or the 106 μ fine filter for smaller particles. Insert it into the filter compartment of the main unit. Ensure it is seated correctly.
3. **Assemble Pole:** Connect the 5-section aluminum pole pieces together to achieve the desired length. Attach the assembled pole to the main vacuum unit. For extended reach, the unit is compatible with standard telescopic pool poles (not included) via the pole connector.

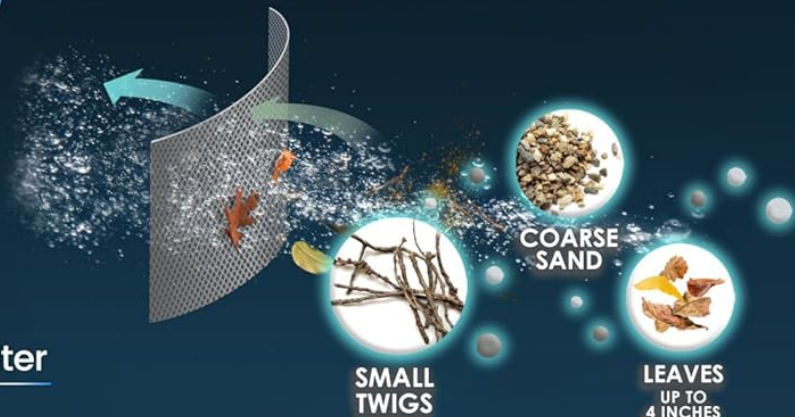
Two Filter Types



All-Purpose
Stainless Steel Filter



250 Micron
Filtration



SMALL
TWIGS

COARSE
SAND

LEAVES
UP TO
4 INCHES

***Tip: Fine Filter weakens suction power,
install only if needed.**



***Fine Filter**



106 Micron
Filtration



FINE
SAND



Not for Algae

Figure 2: Pole Assembly and Versatility. This image illustrates the modular 5-section pole and the adapter that allows the vacuum to connect to standard telescopic poles for greater reach.

Charging the Battery

Before first use, fully charge the vacuum's internal Lithium-Ion battery. A full charge provides approximately 50 minutes of cordless cleaning time.

- Locate the charging port on the main unit.
- Connect the charger adaptor to the vacuum and then plug the charger into a standard electrical outlet.

- The LED indicator on the charger will show red during charging and turn green when fully charged.
- Charging time is typically 4-6 hours.



Figure 3: Charging the Vacuum. This diagram details the charging process, including connecting the adaptor and interpreting the LED indicator lights (red for charging, green for full).

OPERATING INSTRUCTIONS

The KOKIDO XTROVAC 320 is designed for easy and effective pool cleaning.

Before You Begin

- Ensure the battery is fully charged.
- Select the appropriate vacuum head and filter for the type of debris you intend to clean.
- The vacuum is suitable for spas, hot tubs, above-ground pools, and small to medium in-ground pools (up to 30ft length, 600 sq ft area, and water depth between 14 inches and 9.8 feet).

Light Weight < 3.5lbs

5-Section Pole Included



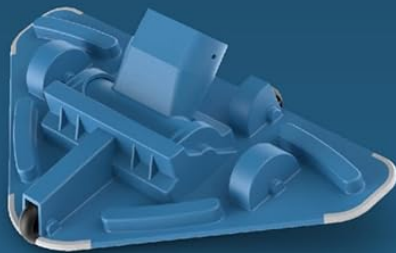
Pole Connector For Extended Reach



compatible with a
standard telescopic pole
(not included)

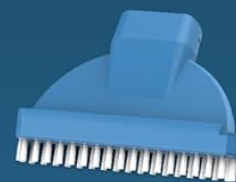
2 Vacuum Heads

For
General Cleaning



Oversized 50° Pivoting Head
(Underside brushes facilitate sand removal)

Focused Suction for
Hard-to-Reach Areas



Flat Brush

Figure 4: Compatible Pool Types. This image provides a visual guide to the types and sizes of pools, spas, and hot tubs for which the XTROVAC 320 is recommended.

Cleaning Your Pool

1. **Turn On:** Press the power button on the main unit to activate the vacuum.
2. **Submerge:** Slowly submerge the vacuum into the water. Ensure the vacuum head is fully immersed before beginning to clean.
3. **Vacuuming:** Guide the vacuum across the pool floor and walls. Use the XL triangular pivoting head for

general cleaning and the flat brush for corners, steps, and other hard-to-reach areas.

4. **Handheld Mode:** For shallow areas or quick spot cleaning, detach the pole and use the main unit in handheld mode.
5. **Debris Collection:** The vacuum effectively picks up sand, coarse sand, small twigs, and leaves up to 4 inches.



Medium Duty & Full-Spectrum Cleaning

Working Time
50
minutes

IPX8

Debris Capacity
0.15
Gal

Versatile Cordless Pool Cleaning

Streamlined Flow Technology

Figure 5: Vacuum in Operation. This image shows the vacuum actively cleaning the pool, highlighting its effective suction and streamlined water flow.

REACH ALL SPOTS



Figure 6: Reaching All Spots. This image demonstrates the versatility of the vacuum, showing its use with the extended pole for deep areas and in handheld mode for steps and shallow sections.

Regular maintenance ensures optimal performance and extends the lifespan of your KOKIDO XTROVAC 320.

Cleaning the Filters

After each use, or when suction power decreases, clean the filter to remove collected debris.

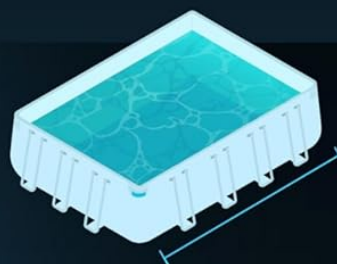
1. Turn off the vacuum and remove it from the water.
2. Detach the vacuum head and open the filter compartment.
3. Remove the filter (either stainless steel or fine filter bag).
4. Rinse the filter thoroughly with a garden hose until all debris is removed.
5. Allow the filter to dry completely before reinserting it into the vacuum unit.

Pool Types

Spas



Hot Tubs



Above-ground Pools



Small to Medium Inground Pools



Length < 30ft

Area < 600ft²

Water Depth
14 inches – 9.8ft

Spot Cleaning Larger Pools

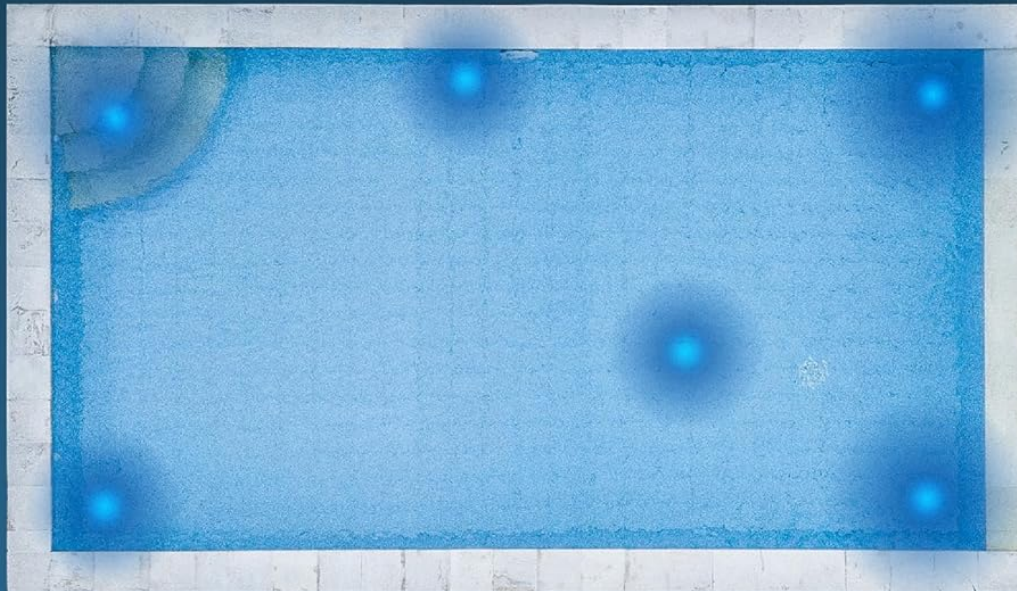


Figure 7: Dual Filter System. This image illustrates the two types of filters provided: the stainless steel filter for general debris and the fine filter for smaller particles like sand. Proper cleaning of these filters is crucial for maintaining suction.

Battery Care and Storage

- Always fully charge the battery before storing the vacuum for extended periods.
- Store the vacuum in a cool, dry place, away from direct sunlight and extreme temperatures.
- Do not attempt to disassemble the battery pack.

TROUBLESHOOTING

If you encounter issues with your KOKIDO XTROVAC 320, refer to the following common problems and solutions.

Problem	Possible Cause	Solution
Reduced Suction Power	Clogged filter; Low battery; Debris too large/small for filter.	Clean or replace filter; Recharge battery; Ensure debris type is suitable for the vacuum (not for leaves >3 inches or very fine silt/algae).
Vacuum Not Turning On	Battery not charged; Power button not fully engaged.	Charge battery fully; Press power button firmly.
Short Run Time	Battery not fully charged; Aging battery.	Ensure full charge (4-6 hours); Contact customer support if battery life significantly degrades.
Water Leaking from Unit	Improper assembly; Damaged seals.	Check all connections and ensure they are tight; Inspect seals for damage and contact support if necessary.

SPECIFICATIONS

Feature	Detail
Model Name	XTROVAC 320
Brand	Kokido
Product Dimensions	11.4"L x 7.3"W x 19.5"H
Item Weight	5.97 pounds
Power Source	Battery Powered
Battery Type	1 Lithium Ion battery required (included)
Battery Weight	95 Grams
Lithium Battery Energy Content	23.7 Watt Hours
Control Method	Touch
Suction Efficiency	16 Gallons Per Minute (GPM)
Waterproof Rating	IPX8

Feature	Detail
Debris Capacity	0.15 Gallons
Filter Types	250μ Stainless Steel, 106μ Fine Filter
Pole Length	72 inches (5-section aluminum pole)
Assembly Required	Yes
UPC	844268034014

WARRANTY AND SUPPORT

Your KOKIDO XTROVAC 320 Cordless Pool Vacuum comes with a **1-year warranty** from the date of purchase, ensuring peace of mind regarding manufacturing defects and performance issues.

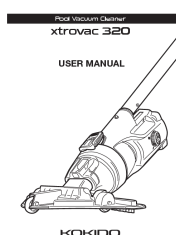
For any questions, technical assistance, or warranty claims, please refer to the contact information provided in your product packaging or visit the official Kokido support website. You can also scan the QR code below for direct access to user manuals and support videos.



Figure 8: Scan for Support. This image highlights the QR code located on the vacuum unit, which can be scanned to access additional user manuals and instructional videos online. [Access online resources here.](#)

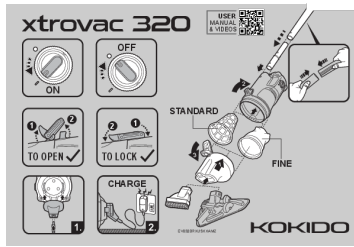
Kokido has 32 years of experience in pool supplies, committed to providing excellent customer service.

Related Documents - XTROVAC 320



[Kokido XTROVAC 320 Pool Vacuum Cleaner User Manual](#)

Comprehensive user manual for the Kokido XTROVAC 320 cordless pool vacuum cleaner, covering safety warnings, setup instructions, operation guidelines, maintenance tips, battery disposal, and troubleshooting.



[\[pdf\]](#) User Manual Warranty

EV032BRXUSXXAMZ xtrovac 320 quick start im website 250205 Quick Start Manual XTROVAC 2025

Upgrade Rechargeable Cordless Pool Vacuum kokidodirect v 1749634187 cdn shopify s files 1 0608

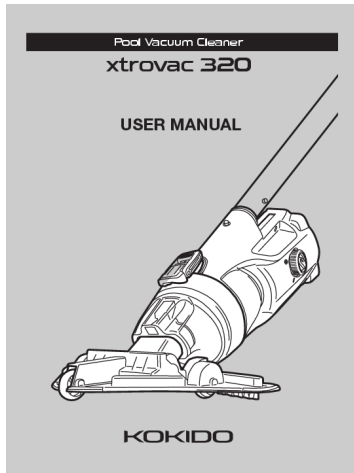
2795 9476 |||

xtrovac 320 USER MANUAL VIDEOS OFF ON 2 1 TO OPEN 2 1 2 STANDARD TO LOCK CHARGE 3 1 FINE 1. 2. EV032BRXUSXXAMZ Customer service info: Tel: 866

683-7672 E-mail: support kokido.com WARNINGS CAUTIONS 1. Keep the Pool

Vacuum Cleaner out of reach of children or persons with reduced phys...

lang:en **score:39** filesize: 559.52 K page_count: 2 document date: 2025-06-11



[Kokido XTROVAC 320 Pool Vacuum Cleaner User Manual](#)

Comprehensive user manual for the Kokido XTROVAC 320 cordless pool vacuum cleaner, covering safety warnings, setup instructions, operation guidelines, maintenance tips, battery disposal, and troubleshooting.

lang:en **score:32** filesize: 2.45 M page_count: 14 document date: 2025-02-05