

HOROW UG16R-GE

HOROW UG16R-GE Hanging Toilet with Bidet Function

Instruction Manual

PRODUCT OVERVIEW

This manual provides essential information for the safe installation, operation, and maintenance of your HOROW UG16R-GE hanging toilet with integrated bidet function. Please read these instructions carefully before installation and use to ensure proper function and longevity of the product.

IMPORTANT SAFETY INFORMATION

- Ensure all local plumbing and building codes are followed during installation.
- Installation should be performed by a qualified professional if you are unsure or lack experience.
- Do not use abrasive cleaners, harsh chemicals, or scouring pads on the toilet or bidet components, as these can damage the finish and internal mechanisms.
- This product is designed for domestic use only.
- The bidet function operates without electricity, relying solely on water pressure. No electrical connection is required or permitted for the bidet function.

PACKAGE CONTENTS

Verify that all components are present and undamaged before beginning installation.

WAS IST IN DER KASTEN



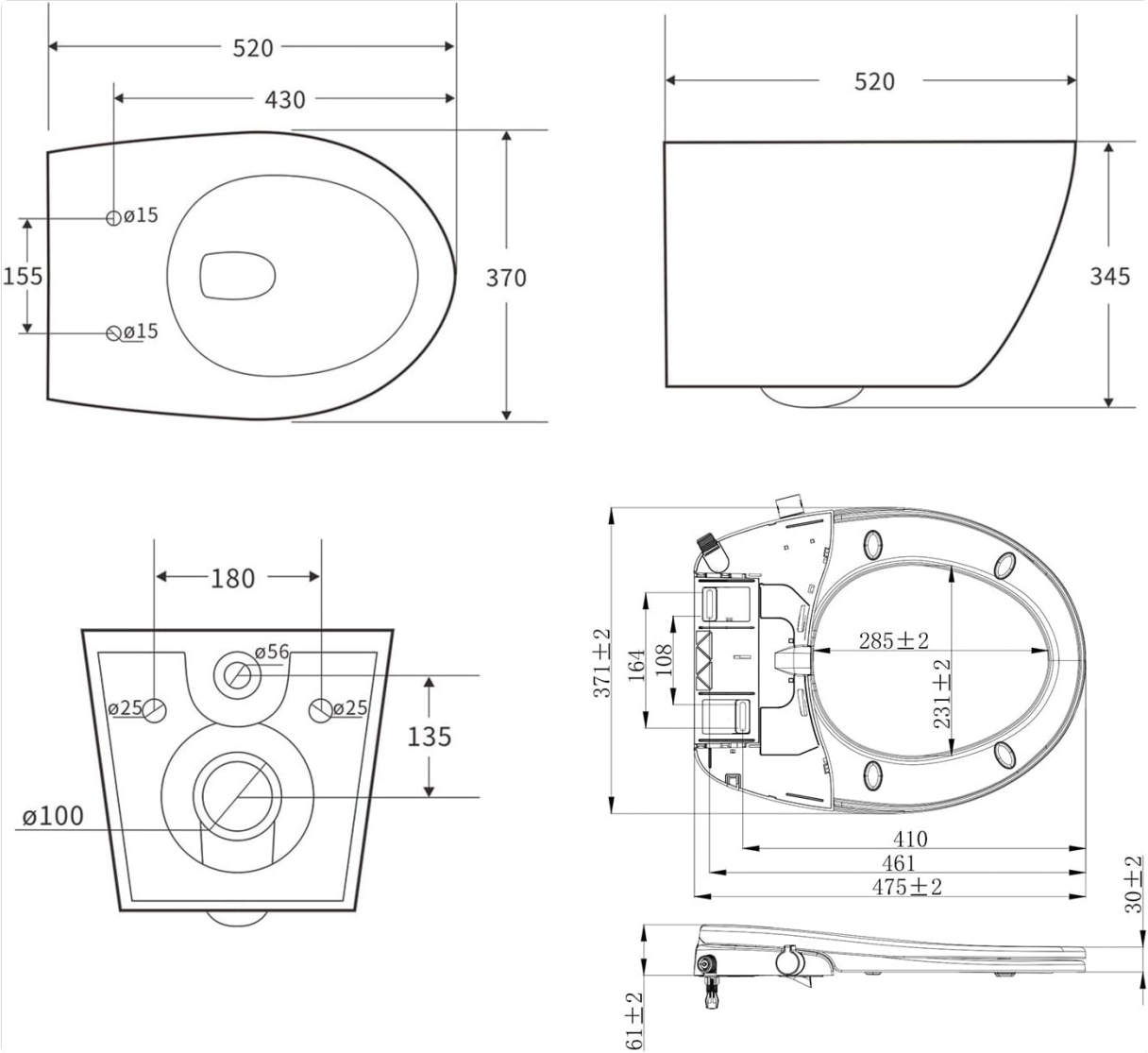
This image displays the complete set of items included in the box: the toilet bowl, shower toilet seat, wall mounting parts, installation instructions, and various connection accessories.

- 1 x HOROW Hanging Toilet Bowl
- 1 x Shower Toilet Seat with Integrated Bidet Function
- 1 x Wall Mounting Parts (brackets, screws, etc.)
- 1 x Installation Instructions (may be in multiple languages)
- Additional connection components (water supply hose, seals, etc.)

PRODUCT SPECIFICATIONS

Feature	Detail
Model Number	UG16R-GE
Brand	HOROW
Color	White
Material	Ceramic

Feature	Detail
Installation Type	Wall Mounted
Product Dimensions (D x W x H)	20.47" x 14.57" x 13.58" (520mm x 370mm x 345mm)
Bidet Function	Dual Nozzle (Buttock & Lady Wash), Non-electric
Toilet Seat	Soft-Close Mechanism, Quick Release
Water Usage	Water-saving flush (approx. 3/4.5L per flush)



This diagram provides precise measurements for the toilet bowl and seat, crucial for installation planning and ensuring compatibility with your bathroom space.

INSTALLATION GUIDE

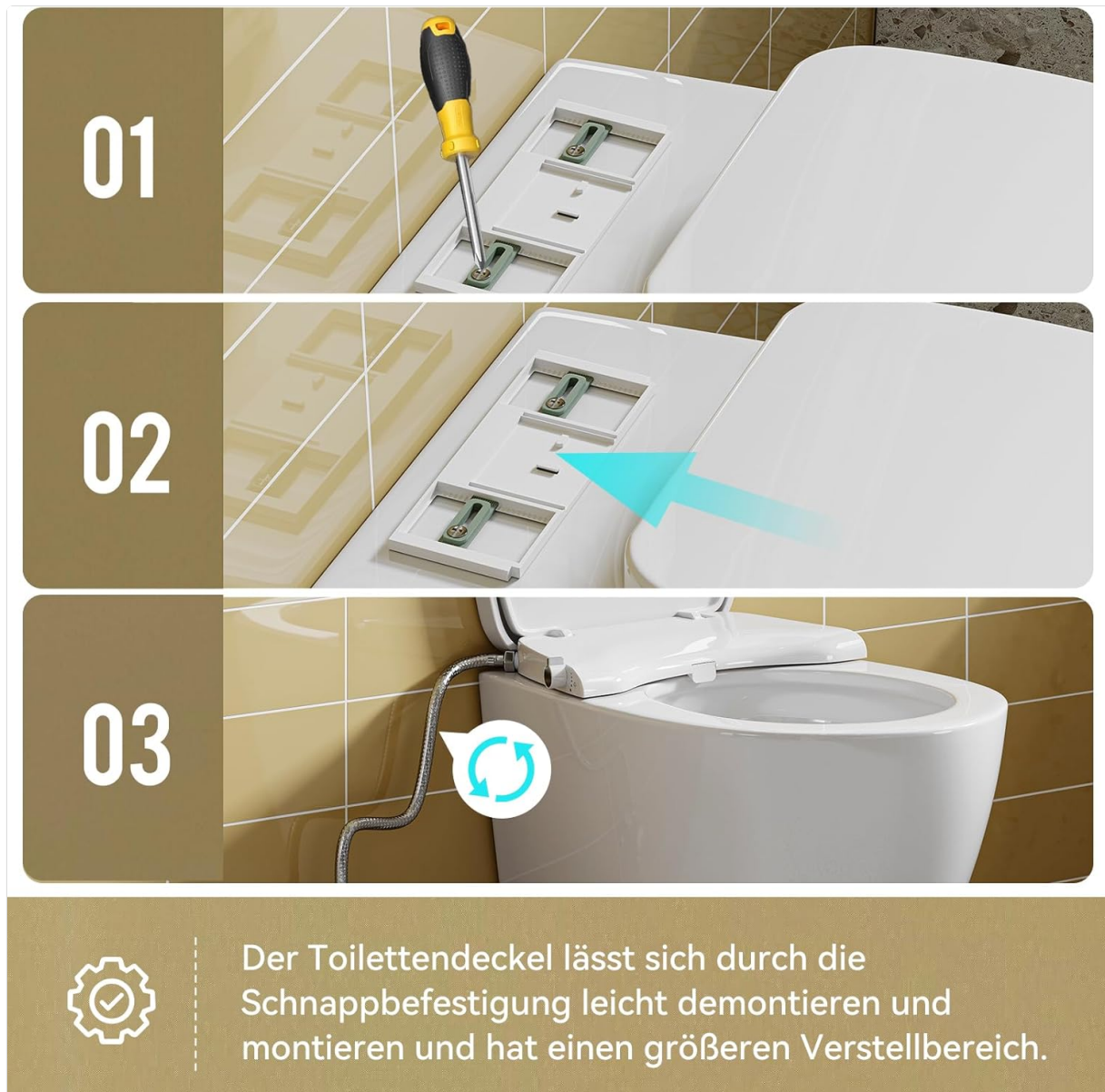
This section outlines the general steps for installing your wall-mounted toilet. Professional installation is highly recommended to ensure correct and safe setup.

Mounting the Toilet Bowl

1. Prepare the wall for mounting according to the provided dimensions and local building codes. Ensure the in-wall support frame (not included) is securely installed and capable of supporting the toilet's weight.
2. Connect the waste pipe to the toilet bowl outlet.

3. Mount the toilet bowl onto the wall studs/frame, ensuring it is level and securely fastened.
4. Tighten all connections and perform an initial check for leaks.

Attaching the Shower Toilet Seat



This image illustrates the simple snap-fastener system for attaching and detaching the toilet seat, allowing for easy installation, removal, and adjustment.

5. Position the mounting plates for the toilet seat onto the toilet bowl.
6. Secure the mounting plates using the provided screws and a screwdriver.
7. Align the shower toilet seat with the mounting plates and push down until it clicks into place. The snap assembly ensures a stable fit and prevents shaking.
8. Connect the bidet water supply hose to the toilet's water inlet. Ensure all connections are tight to prevent leaks.

OPERATING INSTRUCTIONS

Using the Bidet Function

The bidet function is entirely mechanical and requires no electrical connection, ensuring safety and simplicity.



This image shows the intuitive rotary knob control for selecting between the buttock wash and lady wash functions, as well as adjusting the water pressure.



These images illustrate the two distinct spray patterns provided by the dual nozzle system for comprehensive and hygienic cleaning.

1. Locate the control knob on the side of the shower toilet seat.
2. Rotate the knob to select either the "Buttock Wash" or "Lady Wash" function.
3. Continue rotating the knob in the selected direction to increase the water pressure and volume.
4. The nozzles will extend automatically when activated and retract when the water is turned off.

Soft-Close Toilet Seat



This image highlights the soft-close feature, which prevents the seat and lid from slamming, ensuring quiet operation and extending product lifespan. It also shows the non-slip buffers for stability.

The toilet seat is equipped with a soft-close mechanism. Gently push the seat or lid downwards, and it will close slowly and quietly on its own. This feature prevents slamming, reduces wear and tear, and extends the product's lifespan.

Water-Saving Flush



Wassersparende Spülung

Sparen 1 bis 1,5 Liter Wasser pro Spülung

This graphic demonstrates the water-saving capability of the HOROW toilet, showing a reduction of 1 to 1.5 liters of water per flush compared to general wall-mounted toilets.

This toilet features an efficient, water-saving flush system, designed to use approximately 3/4.5 liters per flush, contributing to reduced water consumption and environmental benefits.

Quiet Operation



This image illustrates the low noise level of the HOROW toilet's flush, making it significantly quieter than traditional toilets and comparable to ambient household sounds.

The HOROW toilet is engineered for quiet operation, with a flush noise level of approximately 50dB, comparable to a quiet conversation, ensuring minimal disturbance in your home.

CARE AND MAINTENANCE

Cleaning the Toilet Bowl

Clean the ceramic surface regularly with a soft cloth and a mild, non-abrasive bathroom cleaner. Avoid using harsh chemicals, acidic cleaners, or abrasive powders, as these can damage the glaze and finish.

Cleaning the Bidet Nozzles

The bidet nozzles are designed to be self-cleaning to some extent. For deeper cleaning, gently wipe the nozzles with a soft, damp cloth. Do not use strong detergents or tools that could scratch the nozzles.

Cleaning the Toilet Seat

The toilet seat can be easily removed for thorough cleaning using the quick-release mechanism. Use a soft cloth and mild soap or a specialized toilet seat cleaner. Avoid harsh chemicals that could discolor or damage the seat material.

TROUBLESHOOTING

Refer to this section for common issues and their solutions. If the problem persists, contact customer support.

Problem	Possible Cause	Solution
Water Leakage	Loose connections, damaged seals, improper installation.	Check all water connections and tighten if necessary. Replace any damaged seals. Ensure proper installation of the toilet bowl and seat.
Bidet Nozzles Not Extending/Retracting	Obstruction, low water pressure, control knob malfunction.	Check for any physical obstructions around the nozzles. Ensure adequate water pressure to the bidet. Verify the control knob moves freely.
Weak Bidet Spray	Low main water pressure, clogged nozzle, bidet water supply valve not fully open.	Check the main water supply pressure. Clean bidet nozzles. Ensure the bidet water supply valve is fully open.
Toilet Seat Does Not Soft-Close	Mechanism obstruction, damage to the soft-close hinges.	Ensure no debris is obstructing the soft-close mechanism. If the hinges are damaged, contact customer support for replacement parts.

WARRANTY AND CUSTOMER SUPPORT

For detailed warranty information, please refer to the documentation provided at the time of purchase or contact HOROW customer service directly.

If you encounter any issues not covered in this manual, require further assistance, or need to order replacement parts, please contact HOROW customer support through their official website or the retailer where the product was purchased.

[Visit the HOROW Store on Amazon](#)