

## Manuals+

[Q & A](#) | [Deep Search](#) | [Upload](#)

[manuals.plus](#) /

› [Maxxima](#) /

› [Maxxima 9-inch Hardwired LED Under Cabinet Light \(Model MSL-905005\) Instruction Manual](#)

## Maxxima MSL-905005

# Maxxima 9-inch Hardwired LED Under Cabinet Light (Model MSL-905005)

Instruction Manual

## INTRODUCTION

Thank you for choosing the Maxxima 9-inch Hardwired LED Under Cabinet Light. This manual provides essential information for the safe installation, operation, and maintenance of your new lighting fixture. Please read these instructions thoroughly before beginning installation and retain them for future reference.

## IMPORTANT SAFETY INFORMATION

**WARNING: RISK OF ELECTRIC SHOCK. Disconnect power at the fuse or circuit breaker before installing or servicing. All electrical connections must be in accordance with local and National Electrical Code (NEC) standards. If you are unfamiliar with proper electrical wiring connections, consult a qualified electrician.**

- This fixture is designed for 120VAC operation.
- Do not install this fixture with wet hands or while standing on a wet or damp surface.
- Ensure all connections are secure and properly insulated.
- This product is ETL listed, ensuring compliance with North American safety standards.

## PACKAGE CONTENTS

- Maxxima 9-inch Hardwired LED Under Cabinet Light Fixture
- Mounting Hardware (screws, wire nuts)
- Instruction Manual

## PRODUCT FEATURES

The Maxxima 9-inch LED Under Cabinet Light offers versatile illumination with advanced features:

- **5 CCT Selectable Color Temperatures:** Choose from 2700K (Soft White), 3000K (Warm White), 3500K (Bright White), 4000K (Neutral White), or 5000K (Daylight) using a convenient slide switch.
- **Integrated On/Off Switch:** A rocker switch on the fixture allows for direct control.
- **Hardwired Installation:** Designed for direct connection to your electrical system.

- **Energy Efficient:** 4.5 Watts, providing 270 lumens of light.
- **Durable and Long-lasting:** Damp rated with a 50,000-hour lifetime.
- **Compact Design:** Dimensions of 9"L x 3.58"W x 1.45"H.



Image: Close-up view of the fixture's On/Off switch and the 5 CCT color temperature selection switch.



Image: Visual representation of the five color temperature options available on the fixture.

## INSTALLATION INSTRUCTIONS

### 1. Preparation

1. **Turn off power:** Locate the circuit breaker or fuse box and turn off the power to the area where you will be installing the light fixture. Verify power is off using a voltage tester.
2. **Gather tools:** You will need a screwdriver, wire strippers, a drill, and possibly a pencil for marking.

### 2. Mounting the Fixture

3. Position the fixture under the cabinet in the desired location. Mark the two mounting screw locations (4" apart) on the mounting surface.
4. Drill pilot holes if necessary.
5. Secure the fixture to the mounting surface using the provided screws. Ensure the fixture is firmly attached.



Image: Underside of the fixture, highlighting the mounting points for installation.

### 3. Wiring Connections

6. Open the wiring compartment cover on the fixture.
7. Carefully strip approximately 3/8 inch of insulation from the ends of the house supply wires (black, white, and ground).
8. Connect the fixture's black wire to the house's black (hot) wire using a wire nut.
9. Connect the fixture's white wire to the house's white (neutral) wire using a wire nut.
10. Connect the fixture's green (ground) wire to the house's bare copper or green (ground) wire using a wire nut.
11. Ensure all wire nuts are securely tightened and no bare wire is exposed.
12. Carefully tuck all wires into the wiring compartment and close the cover.



Closed



Open

Image: The wiring compartment of the fixture, illustrating how wires are connected and secured.

## 4. Final Steps

13. Once wiring is complete and the compartment cover is closed, restore power at the circuit breaker or fuse box.
14. Test the light fixture using the On/Off switch.

## OPERATING INSTRUCTIONS

---

### 1. Power On/Off

Use the rocker switch located on the front of the fixture to turn the light **ON** or **OFF**. If the fixture is connected to a wall switch or timer, you can leave the rocker switch in the **ON** position and control the light from the external switch.

### 2. Color Temperature Selection (CCT)

The fixture features a slide switch for selecting one of five color temperatures. To change the CCT, simply slide the switch to your desired setting:

- **2700K:** Soft White
- **3000K:** Warm White
- **3500K:** Bright White
- **4000K:** Neutral White
- **5000K:** Daylight

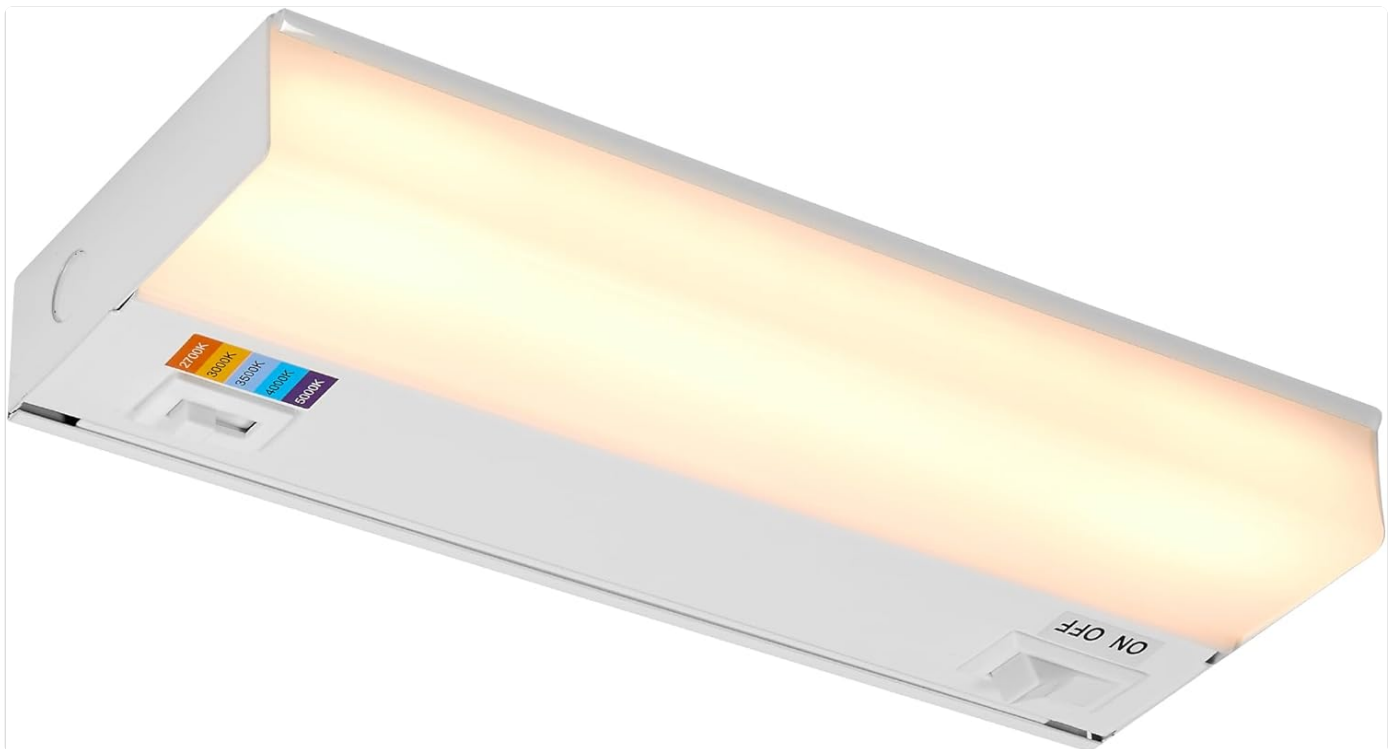


Image: The under cabinet light illuminated with a warm white color temperature (e.g., 2700K or 3000K).



Image: The under cabinet light illuminated with a neutral white color temperature (e.g., 4000K or 5000K).

MAINTENANCE

To maintain the appearance and performance of your Maxxima LED Under Cabinet Light:

- Ensure power is disconnected before cleaning.
- Wipe the fixture with a soft, damp cloth. Do not use abrasive cleaners or solvents, as these may damage the finish or electrical components.
- No user-serviceable parts are inside. Do not attempt to open or repair the fixture.

TROUBLESHOOTING

Problem	Possible Cause	Solution
Light does not turn on.	No power to the fixture.	Check circuit breaker/fuse. Ensure wall switch (if any) is ON. Verify all wiring connections are secure.
Light flickers or is dim.	Loose wiring connection.	Disconnect power and re-check all wiring connections.
Incorrect color temperature.	CCT slide switch set incorrectly.	Adjust the CCT slide switch to the desired setting.

SPECIFICATIONS

Attribute	Value
Model Number	MSL-905005
Size	9 Inch


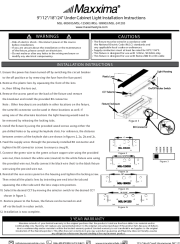
Attribute	Value
Wattage	4.5 Watts
Brightness	270 Lumens
Color Temperature (CCT)	2700K, 3000K, 3500K, 4000K, 5000K Selectable
Voltage	120 Volts (AC)
Product Dimensions	9"L x 3.58"W x 1.45"H
Item Weight	1 Pound
Material	Plastic
Light Source Type	LED
Lifetime	50,000 hours
Certifications	ETL Listed
Warranty	3 Years

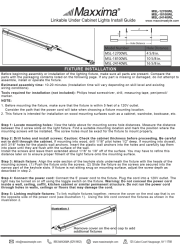
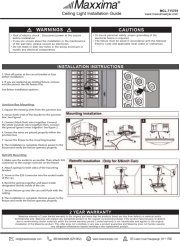
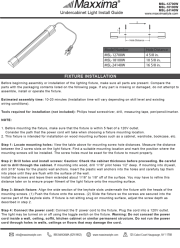
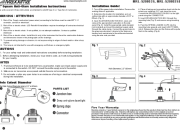
WARRANTY AND SUPPORT

This Maxxima LED Under Cabinet Light is covered by a **3-year warranty** from the date of purchase. This warranty covers defects in materials and workmanship under normal use.

For technical support, warranty claims, or further assistance, please contact Maxxima customer service. Refer to the product packaging or the official Maxxima website for current contact information.

Related Documents - MSL-905005

	<p><a href="#">Maxxima Ceiling Light Installation Guide MCL-3142300B/MCL-3142300SN</a></p> <p>A comprehensive installation guide for the Maxxima Ceiling Light, model numbers MCL-3142300B and MCL-3142300SN. This guide provides step-by-step instructions for wiring and mounting the fixture, along with important safety warnings and cautions. It also details the 3-year limited warranty offered by Maxxima.</p>
	<p><a href="#">Maxxima Under Cabinet Light Installation Instructions</a></p> <p>Step-by-step installation guide for Maxxima under cabinet lights, including safety warnings, cautions, and warranty information.</p>

	<p><a href="#">Maxxima Linkable Under Cabinet Lights Installation Guide (MSL-12700WL, MSL-18100WL, MSL-24140WL)</a></p> <p>Comprehensive installation guide for Maxxima's linkable under cabinet lights, including models MSL-12700WL, MSL-18100WL, and MSL-24140WL. Learn how to safely install and link your under cabinet lighting.</p>
	<p><a href="#">Maxxima MCL-715705 Ceiling Light Installation Guide and Warranty</a></p> <p>Comprehensive installation instructions and warranty information for the Maxxima MCL-715705 LED Round Ceiling Light. Covers junction box mounting and retrofit mounting, with safety warnings and cautions.</p>
	<p><a href="#">Maxxima Undercabinet Light Installation Guide (MSL-12700W, MSL-18100W, MSL-24140W)</a></p> <p>Comprehensive installation guide for Maxxima MSL-12700W, MSL-18100W, and MSL-24140W undercabinet LED lights. Includes step-by-step instructions, required tools, important warnings, warranty information, and a list of included parts.</p>
	<p><a href="#">Maxxima MRL-S20803S/SB 2 inch Square Anti-Glare LED Downlight Installation Guide</a></p> <p>Installation guide for Maxxima MRL-S20803S and MRL-S20803SB 2-inch square anti-glare LED downlights. Features include Canless IC rating, 450 lumens, and 3 CCT options (2700K-4000K). Includes safety warnings, parts list, and step-by-step installation procedures.</p>