

Philips TAM3505M2

Philips TAM3505M2 Micro HiFi System User Manual

Model: TAM3505M2

1. INTRODUCTION

Thank you for purchasing the Philips TAM3505M2 Micro HiFi System. This system offers powerful stereo sound and versatile music playback options, including CD, FM/DAB radio, Bluetooth, USB, and Audio In. This manual provides essential information for the safe and efficient use of your device. Please read it thoroughly before operating the system and retain it for future reference.

2. SAFETY INFORMATION

Always follow basic safety precautions when using this equipment to reduce the risk of fire, electric shock, and personal injury.

- **Power Source:** Ensure the power voltage matches the rating label on the back of the unit.
- **Ventilation:** Do not block any ventilation openings. Allow sufficient space around the unit for proper airflow.
- **Water and Moisture:** Do not expose the unit to rain or moisture. Do not place objects filled with liquids, such as vases, on the unit.
- **Heat:** Keep the unit away from heat sources such as radiators, heat registers, stoves, or other apparatus (including amplifiers) that produce heat.
- **Cleaning:** Unplug the unit from the wall outlet before cleaning. Use a soft, dry cloth only.
- **Servicing:** Do not attempt to service this product yourself. Refer all servicing to qualified service personnel.

3. PACKAGE CONTENTS

Please check that the following items are included in your package:

- Main Unit (Micro HiFi System)
- 2 x Bookshelf Speakers
- Remote Control (with 1 AAA battery)
- FM/DAB Antenna
- Power Cable
- User Manual (this document)

4. PRODUCT OVERVIEW

The Philips TAM3505M2 Micro HiFi System consists of a central unit and two separate bookshelf speakers, designed for optimal stereo sound reproduction. The central unit features a CD player, display, control buttons, and various input/output ports.



Image 4.1: The Philips TAM3505M2 Micro HiFi System, showing the central unit flanked by two black bookshelf speakers.

Compact en klassiek stereo-ontwerp

Met zijn subtiële centrale unit in twee kleuren en luidsprekerkasten, doet dit prachtige microstelsel denken aan het ontwerp van klassieke hi-fi-onderdelen. Door het compacte ontwerp kun je het stelsel eenvoudig in je huis plaatsen, en er zitten knoppen op de voorkant van de unit voor afspelen en selecteren van de afspeler.



Image 4.2: The Philips TAM3505M2 Micro HiFi System positioned on a wooden cabinet, illustrating its compact and classic stereo design. The image highlights the subtle two-tone central unit and the matching speakers.

5. SETUP

5.1 Connecting the Speakers

Connect the speaker wires from the bookshelf speakers to the corresponding speaker terminals on the back of the main unit. Ensure correct polarity (red to red, black to black) for optimal sound quality.

5.2 Power Connection

Plug the power cable into the AC IN socket on the main unit, then plug the other end into a wall power outlet.

5.3 Antenna Connection

Connect the supplied FM/DAB antenna to the appropriate antenna input on the rear of the main unit. Extend the antenna fully for best reception.

5.4 Initial Power On

Press the power button on the front panel or remote control to turn on the system. The display will illuminate, and the system will be ready for use.

6. OPERATING INSTRUCTIONS

6.1 Basic Controls

The system can be controlled using the buttons on the front panel or the included remote control. Common controls include Power, Volume Up/Down, Source Selection, Play/Pause, Skip, and Stop.

6.2 Source Selection

Press the 'Source' button on the unit or remote to cycle through available input sources: CD, FM, DAB, Bluetooth, USB, and Audio In.

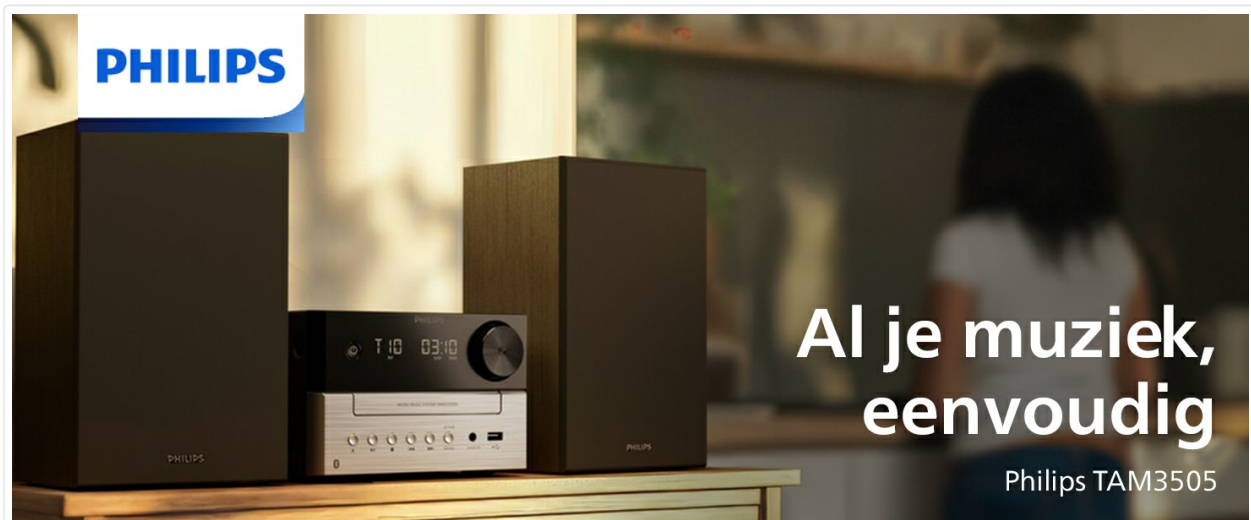


Image 6.1: The Philips TAM3505M2 Micro HiFi System in a living space, emphasizing its ability to play 'All your music, simply'.

6.3 CD Playback

1. Select the 'CD' source.
2. Press the 'Open/Close' button to open the CD tray.
3. Place a CD (audio CD or MP3 CD) with the label side up into the tray.
4. Press the 'Open/Close' button again to close the tray.
5. Playback will start automatically or by pressing the 'Play' button.



Speelt al je muziek

Muziek, podcasts, nieuws, hoorspelen, sport - de lijst is eindeloos! Je kunt afstemmen op kristalheldere DAB+/FM-radio, je geluiden streamen via Bluetooth, of verbinding maken met andere bronnen als flash drives via USB of draaitafels via audio-in. De digitale radiotuner met 20 instellingen biedt kristalheldere ontvangst en de CD-speler kan MP3-CD's en opgenomen CD's lezen.

Image 6.2: A close-up of the Philips TAM3505M2 Micro HiFi System with its CD tray open, illustrating its capability to 'Play all your music' from physical media.

6.4 Radio Operation (FM/DAB)

1. Select 'FM' or 'DAB' source.
2. For FM, use the tuning buttons to manually tune or auto-scan for stations.
3. For DAB, the system will automatically scan for available stations upon first use.
4. To save a station as a preset, press and hold the 'Preset' button, then use the navigation buttons to select a preset number and confirm. The system supports 20 presets.

6.5 Bluetooth Pairing and Streaming

The system features Bluetooth 5.4 with LE Audio and Auracast for enhanced streaming.

1. Select the 'Bluetooth' source. The system will enter pairing mode automatically or by pressing and holding the Bluetooth button.
2. On your mobile device, enable Bluetooth and select 'Philips TAM3505M2' from the list of available devices.
3. Once paired, you can stream audio from your device to the HiFi system.
4. **Auracast:** For multi-speaker streaming, ensure other compatible Auracast speakers are within range and follow their instructions to connect to the TAM3505M2's Auracast broadcast.

Bluetooth 5.4 voor beter geluid en Auracast streaming

Bluetooth LE en de LC3-codec worden ondersteund voor opmerkelijk beter geluid tijdens het streamen. Auracast wordt ook ondersteund, dus je kunt muziek uitzenden vanaf dit microstelsel naar meerdere voor Auracast geschikte luidsprekers in je huis. Of je kunt naar het microstelsel en andere voor Auracast geschikte luidsprekers streamen vanaf een compatibel smart device.



Image 6.3: The Philips TAM3505M2 Micro HiFi System alongside a smartphone displaying the Philips Entertainment app interface, highlighting 'Bluetooth 5.4 for better sound and Auracast streaming'. This image demonstrates the system's

6.6 USB Playback

Insert a USB flash drive containing audio files into the USB port on the front of the unit. Select the 'USB' source, and the system will begin playing compatible audio files.

6.7 Audio In Connection

Connect an external audio device (e.g., turntable, MP3 player) to the 'Audio In' jack on the front of the unit using a 3.5mm audio cable. Select the 'Audio In' source to listen to audio from the connected device.

6.8 Digital Sound Control

Use the Digital Sound Control feature to adjust the sound profile to your preference. This allows you to optimize audio for different types of content like music, podcasts, or radio plays.

Geweldig stereogeluid voor al je favorieten

Je geniet van helder stereogeluid met diepe bass omdat de luidsprekers in de vorm van een boekensteun het allerbeste halen uit de krachtige 20 W (RMS)-uitgang, 3" woofers en bass-reflex-poorten van je systeem. Met Digital Sound Control kun je uit vooraf ingestelde geluidsstijlen kiezen - van muziek tot radiohoorspelen, je geniet altijd van het beste geluid voor wat je luistert.



Image 6.4: The Philips TAM3505M2 Micro HiFi System with abstract sound wave graphics, illustrating its 'Great stereo sound for all your favorites' feature, emphasizing its powerful audio output.

6.9 Using the Philips Entertainment App

Download the Philips Entertainment app to your smartphone to conveniently control your micro HiFi system. The app allows you to customize audio styles, change audio sources, and manage settings remotely.

7. MAINTENANCE

7.1 Cleaning

To clean the unit, unplug it from the power outlet. Use a soft, dry, lint-free cloth. Do not use cleaning agents containing alcohol, ammonia, abrasives, or benzene as these may damage the finish.

7.2 Care for CDs

Handle CDs by their edges. Keep them clean and free from scratches. Store them in their cases when not in use.

7.3 Environmental Considerations

The Philips TAM3505M2 is designed with sustainability in mind, utilizing 85% Post-Consumer Recycled (PCR) plastic in its construction. The packaging is plastic-free and made from FSC-certified recycled cardboard. Please dispose of the product and its packaging responsibly according to local regulations.



Gemaakt van gerecycled plastic. Verantwoorde verpakking

Al het plastic dat gebruikt is voor dit microstelsel is gerecycled en onze verpakking is plasticvrij. Inlegvellen zijn gedrukt op gerecycled papier met inkt op sojabasis, en voor de verpakking zelf is FSC-gecertificeerd gerecycled karton gebruikt.

Image 7.1: The Philips TAM3505M2 Micro HiFi System in a room, highlighting its construction from recycled plastic and responsible packaging. This image emphasizes the product's eco-friendly design.

8. TROUBLESHOOTING

If you encounter issues with your Philips TAM3505M2, refer to the following common problems and solutions:

Problem	Possible Cause	Solution
No power	Power cable not connected securely.	Check power cable connection to the unit and wall outlet.
No sound	Volume too low; incorrect source selected; speaker wires loose.	Increase volume; select correct source; check speaker wire connections.
CD not playing	CD inserted incorrectly; CD is dirty or scratched; unsupported disc format.	Reinsert CD correctly; clean or replace CD; ensure it's an audio CD or MP3 CD.
Bluetooth pairing fails	Device too far; Bluetooth not enabled on source device; system not in pairing mode.	Move device closer; enable Bluetooth; put system into pairing mode.
Poor radio reception	Antenna not properly positioned or connected.	Adjust antenna position; ensure antenna is fully extended and connected.

9. SPECIFICATIONS


Feature	Specification
Brand	PHILIPS
Model Number	TAM3505M2
Color	Black
Output Power	20 Watts (RMS)

Feature	Specification
Speaker Type	Stereo Bookshelf Speakers with 3" Woofers and Bass-Reflex Ports
Connectivity	Bluetooth 5.4 (LE Audio, Auracast), USB, Audio In (3.5mm)
Radio Tuner	DAB+, FM Digital Tuner (20 Presets)
CD Player	Compatible with Audio CD, CD-R/RW, MP3-CD
Compatible Devices	Personal Computer, Smartphone, Tablet, Television
Power Source	AC Power Cable
Dimensions (L x W x H)	23.8 x 48 x 24.7 cm
Item Weight	3.36 Kilograms
Remote Control Battery	1 x AAA (Alkaline, included)
Material	85% Post-Consumer Recycled (PCR) Plastic
Packaging	Plastic-free, FSC-certified recycled cardboard
Manufacturer	TP Vision
Country of Origin	China

10. WARRANTY AND SUPPORT

For warranty information and customer support, please refer to the warranty card included with your product or visit the official Philips website for your region. You may also find additional support resources, FAQs, and contact details there.







Related Documents - TAM3505M2



دليل المستخدم
Philips TAM3505M2

[Philips TAM3505M2 Micro Music System User Manual](#)

Comprehensive user manual for the Philips TAM3505M2 Micro Music System, covering setup, operation, features like Bluetooth and Auracast, radio, CD, USB playback, and troubleshooting.

<p>PHILIPS Mikro Muzik Sistemi TAM4505M2</p>  <p>Kullanıcı el kitabı Dokümanları indirin ve sorularınızı sorabilirsiniz www.philips.com/support</p>	<p>Philips TAM4505M2 Mikro Muzik Sistemi Kullanım Kılavuzu</p> <p>Kapsamlı kullanım kılavuzu, Philips TAM4505M2 Mikro Muzik Sistemi'ni kurma, kullanma ve sorun giderme hakkında ayrıntılı bilgiler sunar. Bluetooth, Auracast, DAB/FM radyo, CD, USB oynatma ve Philips Entertainment uygulaması entegrasyonu gibi özelliklerini detaylandırır.</p>
<p>PHILIPS Mini Stereoanlage TAM4205M2</p>  <p>Bedienungsanleitung Registrieren Sie Ihr Produkt und erhalten Sie Unterstützung online www.philips.com/support</p>	<p>Philips TAM4205M2 Mini Stereoanlage Bedienungsanleitung</p> <p>Umfassende Bedienungsanleitung für die Philips TAM4205M2 Mini Stereoanlage, die detaillierte Anweisungen zur Einrichtung, Bedienung, Nutzung von Funktionen wie Auracast und Bluetooth, der Philips Entertainment App sowie zur Fehlerbehebung bietet.</p>
<p>PHILIPS Micro Music System TAM3505M2</p>   <p>www.philips.com/welcome</p>	<p>Philips TAM3505M2 Micro Music System Quick Start Guide</p> <p>A comprehensive guide to setting up and operating the Philips TAM3505M2 Micro Music System, covering features like DAB/FM radio, CD playback, Bluetooth connectivity, and sleep timer functions.</p>
<p>PHILIPS Micro impianto musicale TAM4505M2</p>  <p>Istruzioni per l'uso Registrazione il prodotto e richiesta assistenza all'indirizzo: www.philips.com/support</p>	<p>Philips TAM4505M2 Micro Music System User Manual</p> <p>This user manual provides comprehensive instructions for the Philips TAM4505M2 micro music system, covering setup, operation, features like Bluetooth and Auracast, radio playback, app integration, troubleshooting, and technical specifications.</p>
<p>PHILIPS Sistemi Mikro Muzikor TAM4505M2</p>  <p>Manuali i Përdoruesit Regjistroni produktin tuaj dhe përfitoni mbështetje në: www.philips.com/support</p>	<p>Philips TAM4505M2 Sistemi Mikro Muzikor - Manuali i Përdoruesit</p> <p>Manuali i përdoruesit për Philips TAM4505M2 Sistemi Mikro Muzikor, duke ofruar udhëzime të hollësishme për instalimin, përdorimin, veçoritë, lidhjen me pajisje të tjera, përdorimin e aplikacionit Philips Entertainment, zgjidhjen e problemeve dhe specifikimet teknike.</p>