

[Manuals.plus](#) /

> [Smartinnov](#) /

> Smartinnov 26 Inch #1B Body Wave I-Tip Microlink Human Hair Extensions User Manual

## Smartinnov B0DTHZ8GTL

# Smartinnov 26 Inch #1B Body Wave I-Tip Microlink Human Hair Extensions User Manual

Model: B0DTHZ8GTL

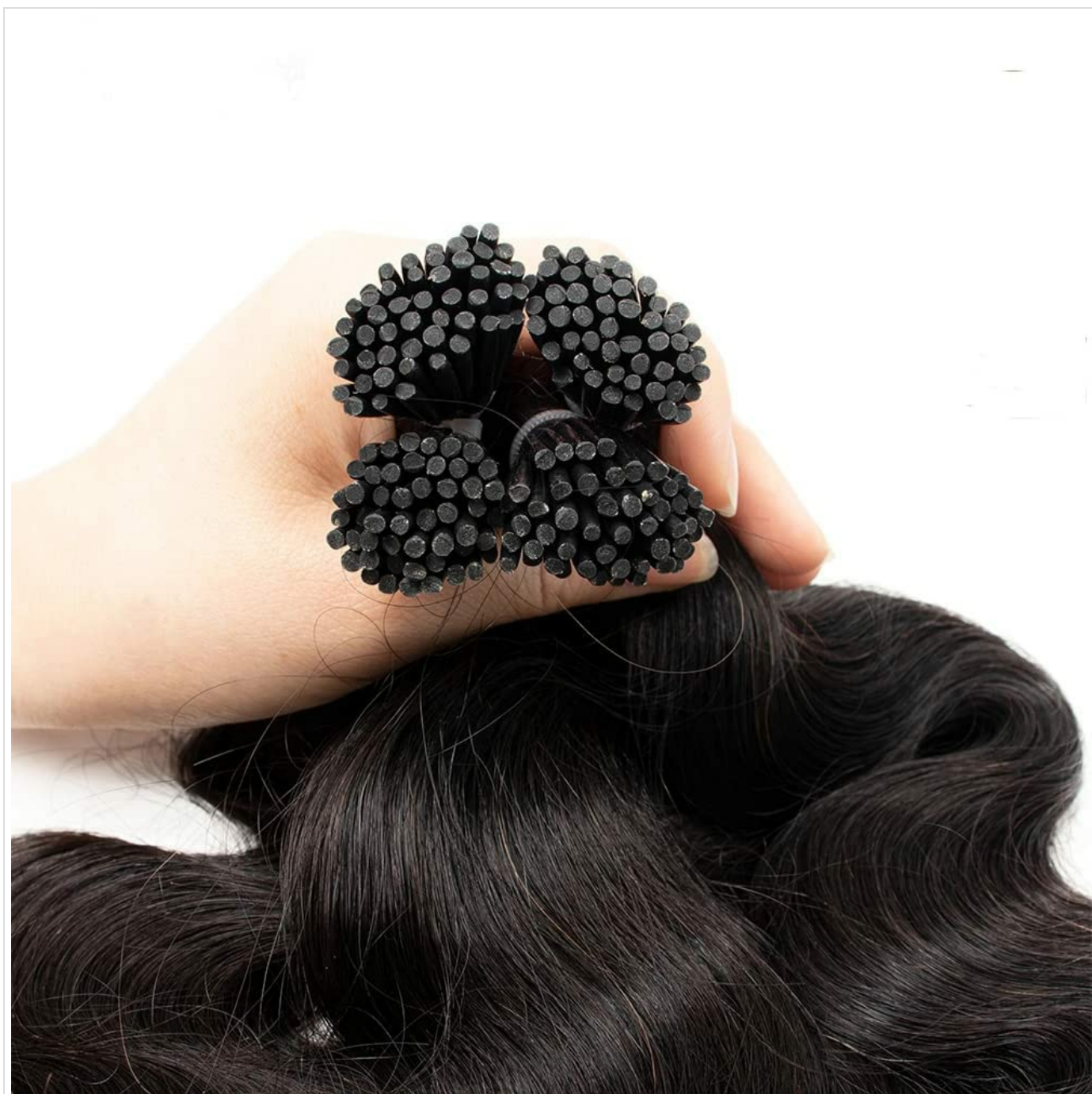
## INTRODUCTION

This manual provides detailed instructions for the installation, care, and maintenance of your Smartinnov 26 Inch #1B Body Wave I-Tip Microlink Human Hair Extensions. Please read this guide thoroughly to ensure proper application and to maximize the lifespan and appearance of your extensions.

## PRODUCT OVERVIEW

Smartinnov I-Tip Human Hair Extensions are made from 100% Remy human hair, designed for a natural look and feel. They are known for minimal shedding and tangling, offering a premium salon-quality experience.

- **Hair Quality:** 100% Remy human hair, no shedding, no tangles.
- **Texture:** Body Wave (other textures available include Straight, Yaki Straight, Deep Wave, Kinky Curly, Kinky Straight).
- **Color:** Natural black (#1B). These extensions can be professionally colored, permed, curled, or straightened to blend seamlessly with your natural hair.
- **Weight & Strands:** Each pack contains 50g. For 14-16 inch lengths, there are 100 strands (0.5g/strand). For 18-24 inch lengths, there are 50 strands (1g/strand).
- **Recommended Quantity:** 1-2 packs are suggested for adding volume, while 3-4 packs are typically needed for a full head application. Note that longer lengths may require more packs due to the consistent 50g weight per pack.



*Image: Bundles of I-Tip hair extensions with keratin tips.*

# Keratin Stick Tipped Hair Extensions

**14inch-16inch 100 strands/pack,0.5g/strands**

**18inch-20inch 50 strands/pack, 1g/strands**

- ▶ For a full head we suggest 2 packs or more (100-200 Gram)
- ▶ For a half head we suggest 1 pack or more (50-100 Gram)
- ▶ For adding volume and stretching length we suggest 3-4 packs (200-250 Gram)

Each length is 50 Gram,so the longer the thinner, more packs needed for long length.



*Image: Detailed information on keratin stick tipped hair extensions, including strand count and weight recommendations.*

## SAFETY INFORMATION

To ensure safety and prevent damage to the product and your hair, keep the hair extensions away from naked flames or direct heat sources when not in use or during styling.

## SETUP AND INSTALLATION

Smartinnov I-Tip extensions utilize a cold fusion method, which means no heat is required for application, minimizing potential damage to your natural hair and scalp. They are applied using micro beads, rings, or links.

### Recommended Application Method:

1. **Prepare Hair:** Ensure your natural hair is clean, dry, and detangled before beginning the installation process.
2. **Section Hair:** Create clean, horizontal sections of your natural hair where the extensions will be applied.

3. **Attach Micro Bead:** Thread a micro bead (recommended size: 5mm x 3mm x 3mm) onto a small section of your natural hair using a looping tool.
4. **Insert I-Tip:** Insert the keratin-tipped end of the extension strand into the micro bead, ensuring it sits securely with your natural hair.
5. **Secure Bead:** Using a pair of pliers specifically designed for hair extensions, gently but firmly clamp the micro bead flat to secure the I-tip extension to your natural hair. Ensure the bead is flat and comfortable against the scalp.
6. **Repeat:** Continue this process section by section until the desired volume and length are achieved.

Silicone micro beads are recommended for their non-slip properties, firmer hold, and comfort, which also helps prevent damage to your natural hair.

## PRE BONDED FUSION HAIR EXTENSIONS



Image: Illustration of I-Tip dimensions and micro bead size for installation.

Your browser does not support the video tag.

Video: This video demonstrates the application process of Smartinnov Microlinks Hair Extensions (I-tips), showing before and after results.

## OPERATING INSTRUCTIONS (STYLING)

---

Your Smartinnov I-Tip extensions are made from 100% human hair, allowing for versatile styling options similar to your natural hair.

- **Heat Styling:** The extensions can be flat ironed straight or curled using heat styling tools. Always use a heat protectant spray to prevent damage.
- **Coloring:** While the hair can be colored, it is highly recommended to consult with a professional stylist for any chemical treatments to ensure optimal results and prevent damage.
- **Perming:** The extensions can be permed, but professional assistance is advised.



*Image: Example of Smartinnov I-Tip extensions styled with a natural body wave.*

## MAINTENANCE

---

Proper maintenance is crucial for extending the life and maintaining the quality of your Smartinnov I-Tip extensions.

- **Washing:** Gently wash your hair and extensions with a sulfate-free shampoo and conditioner. Avoid scrubbing vigorously at the roots where the beads are attached. Rinse thoroughly.
- **Drying:** Pat hair gently with a towel to remove excess water. Air drying is recommended, or use a low heat setting on a blow dryer with a heat protectant.
- **Brushing:** Use a wide-tooth comb or a brush specifically designed for extensions. Start brushing from the ends and work your way up to the roots, holding the roots to prevent tension on the beads.
- **Re-flattening Beads:** After a week of wear, or due to daily activities like combing and sleeping, the micro beads may become loose. It is recommended to re-flatten the beads every 2-3 weeks to ensure a secure hold and extend the wear time of your extensions.
- **Sleeping:** Braid your hair loosely or tie it in a silk scarf or bonnet before sleeping to prevent tangling.

## TROUBLESHOOTING

Issue	Possible Cause	Solution
Extensions feel loose	Micro beads have loosened over time due to daily activities.	Re-flatten the micro beads using extension pliers. This should be done every 2-3 weeks as part of regular maintenance.
Tangles or matting	Improper brushing, lack of conditioning, or sleeping without securing hair.	Gently detangle with a wide-tooth comb, starting from the ends. Apply a leave-in conditioner. Ensure hair is secured before sleeping.
Excessive shedding	Rough handling during washing or brushing, or improper installation.	Handle extensions gently. Ensure micro beads are clamped correctly without damaging the hair shaft.

## SPECIFICATIONS

- **Product Dimensions:** 8 x 1 x 1 inches
- **Item Weight:** 3.53 ounces (100 grams)
- **Brand:** Smartinnov
- **Material:** 100% Human Hair
- **Extension Length:** 26 Inches
- **Style:** Body Wave
- **Color:** #1B (Natural Black)
- **ASIN:** B0DTHZ8GTL
- **Manufacturer:** Smartinnov

## WARRANTY INFORMATION

Warranty information for this product is not explicitly specified in the provided documentation. Please refer to the retailer's return policy or contact Smartinnov customer support for details regarding product guarantees.

## CUSTOMER SUPPORT

For further assistance, inquiries, or to view more product information, please visit the [Smartinnov Store on Amazon](#) or contact Smartinnov customer service directly.

