

AMBITFUL GC30R

Ambitful GC30R 30W RGB Inflatable LED Tube Light User Manual

Model: GC30R

[Instructions](#) [Overview](#) [What's in the Box](#) [Setup](#) [Operating](#)
[Maintenance](#) [Troubleshooting](#) [Specifications](#) [Warranty & Support](#)

1. PRODUCT OVERVIEW

The Ambitful GC30R is a 30W RGB full-color inflatable LED tube light designed for photography and videography. It offers a wide color temperature range from 2500K to 10000K, high color rendering (CRI 95+, TLCI 96+), and various special lighting effects. Its inflatable design makes it lightweight and portable, while built-in magnets provide versatile mounting options. The device is also waterproof and dustproof (IP6X), suitable for diverse shooting environments.

Key Features:

- **90cm Inflated Illumination Surface:** Features 624 full-spectrum LED beads for broad and even illumination.
- **HSI Full-Color Mode:** Offers 36,000 precise color options for creative lighting.
- **Type-C Power Compatibility:** Supports PD protocol (30W max) and universal 5V (10W) power supplies.
- **16 Built-in Lighting Effects:** Includes lightning, police lights, strobe, hue shifts, and color loops.
- **Cinematic Soft Lighting:** White TPU back panel enhances brightness and provides a soft, natural glow.
- **Multi-Function Air Valve:** Allows for easy electric or manual inflation and quick deflation for storage.
- **Built-in N52 Magnets:** Enables firm attachment to metallic surfaces for flexible setup.
- **IP6X Protection:** Professional waterproof and dustproof rating for use in various conditions.

Ambitful

GCA30R

Full color lithium electric column lamp



Waterproof
and Dustproof



Built-in Battery



Magnetic
Back Design

CRI≥95
TLCI≥96

High Color
Fidelity



Lightweight
& Portable

2000K~
10000K

Bi-color

HSI

RGB Full
Color Mode

FX

Light Effect



Image: The Ambitful GC30R features a built-in 36Wh Lithium Battery, providing approximately 70 minutes of battery life and supporting 30W fast charging, with a full charge achieved in about 90 minutes.

2. WHAT'S IN THE BOX

- Ambitful GC30R Inflatable LED Tube Light
- (Additional accessories such as charging cable, pump, or mounting accessories may be included depending on the package. Please refer to your product packaging for a complete list.)

3. SETUP INSTRUCTIONS

3.1 Inflation

1. Unfold the Ambitful GC30R tube light from its compact state.
2. Locate the multi-function air valve, typically positioned at the rear of the light.
3. Open the valve cap.
4. Inflate the tube light using either the provided manual pump or an electric pump. Ensure the light is fully inflated to achieve its optimal 90cm illumination surface.
5. Close the valve cap securely to prevent air leakage.

Your browser does not support the video tag.

Video: This video demonstrates the inflation process of the Ambitful GC30R 30W RGB Inflatable Tube Light, showing how to prepare it for use.

SUPER LIGHTWEIGHT

The GC30R Inflatable Tube Light series is lightweight and convenient, with a length of only 900mm and a weight of only about 370g, so you can move around and fill in the light as you go.

900mm
Length

125mm
Diameter

370g
Net Weight



Image: The fully inflated Ambientful GC30R provides an extra-long 90cm luminous surface, ideal for creating broad and even lighting effects.

3.2 Powering On/Charging

- The GC30R has a built-in lithium battery. To power on, press and hold the power button located on the control panel.
- To charge the device, connect a compatible Type-C power source (supporting PD protocol up to 30W or universal 5V/10W) to the Type-C port.
- A full charge typically takes about 90 minutes and provides approximately 70-75 minutes of continuous use at full power.

4. OPERATING INSTRUCTIONS

4.1 Control Panel Overview

The control panel features a display screen and navigation buttons (up, down, left, right, and a central selection button) for adjusting settings.

Built-in 36wh Lithium Battery

Battery life is about 70 minutes, supports 30W fast charging and discharging, and takes about 90 minutes to fully charge.



Image: Close-up view of the Ambitful GC30R's control panel, showing the display screen and navigation buttons for adjusting light settings.

4.2 Adjusting Brightness (Stepless Dimming)

- From the main display, use the Up/Down navigation buttons to adjust the brightness level from 0% to 100%.



Image: Illustration of the stepless dimming feature on the Ambitful GC30R, allowing for 0-100% brightness adjustment.

4.3 Color Temperature Adjustment (CCT Mode)

- Navigate to the CCT mode on the display.
- Use the navigation buttons to adjust the color temperature between 2500K (warm) and 10000K (cool).

IP6X PROTECTION

The light body reaches IP6X level of professional waterproof and dustproof, can be used in different scenarios such as outdoor, rainy days, all-weather use, even in harsh environments, can still add light and color to the creation.



Image: Visual representation of the Ambitful GC30R's wide color temperature range, adjustable from 2000K to 10000K.

4.4 HSI Full-Color Mode

- Select HSI mode from the control panel.
- Adjust Hue (H), Saturation (S), and Intensity (I) to achieve over 36,000 color combinations.

2000K~10000K Color Temperature

With a wide color temperature range of 2000K~10000K, the adjustment process is natural and smooth, convenient and quick, to meet the creative expression of different themes and styles.



2000K

10000K

Image: The Ambitful GC30R in HSI Full Color Mode, demonstrating the vast range of 36,000 adjustable colors for creative lighting.

4.5 Special Lighting Effects (FX Mode)

- Enter FX mode to access 16 built-in special effects.
- Use the navigation buttons to select and customize effects such as lightning, police lights, strobe, hue shifts, and color loops.

Your browser does not support the video tag.

Video: This video demonstrates the various lighting effects and color adjustments possible with the Ambitful GC30R Inflatable Tube Light.

4.6 Mounting Options

- **Magnetic Attachment:** Utilize the three built-in N52 magnets to firmly attach the light to any metallic surface.
- **Handheld Use:** The lightweight design (approx. 370g) allows for comfortable handheld operation.
- **Stand Mounting:** The light can be attached to compatible light stands or tripods using appropriate adapters (not included).

STEPLESS DIMMING

0-100% stepless brightness adjustment, light intensity changes with your heart, photography lighting more flexible.

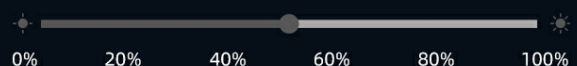
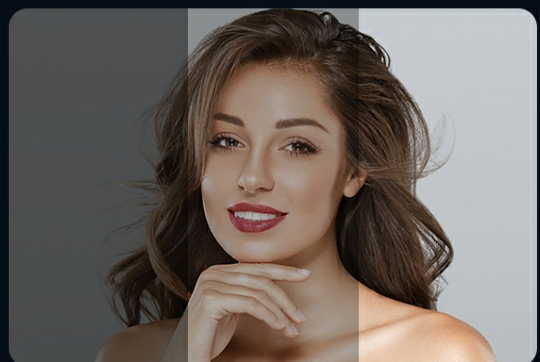


Image: The Ambitful GC30R demonstrating its N52 magnetic attachment capability, allowing it to be firmly adsorbed onto metallic surfaces.

5. MAINTENANCE

5.1 Cleaning

- Wipe the exterior of the light with a soft, damp cloth. Avoid using harsh chemicals or abrasive materials.
- Ensure the Type-C port and air valve are free from dust and debris.

5.2 Storage

- To deflate, open the multi-function air valve and gently press the light to release air.
- Once deflated, fold the light compactly for storage in its original packaging or a protective case.
- Store in a cool, dry place away from direct sunlight and extreme temperatures.

5.3 Battery Care

- For optimal battery life, fully charge the device before long-term storage and recharge every 3-6 months.
- Avoid completely draining the battery frequently.

6. TROUBLESHOOTING

Problem	Possible Cause	Solution
Light does not turn on.	Low battery or power button not pressed correctly.	Charge the device using a compatible Type-C cable. Press and hold the power button for a few seconds.
Light does not inflate properly.	Air valve not sealed, or insufficient inflation.	Ensure the air valve cap is open during inflation and securely closed afterward. Use the pump to fully inflate. Check for any punctures.
Inconsistent light output or flickering.	Low battery or internal connection issue.	Charge the device fully. If the problem persists, contact customer support.
Magnetic attachment is weak.	Surface is not metallic or too thin.	Ensure the surface is made of a ferrous metal. The strength of the magnetic hold depends on the thickness and material of the metallic surface.

7. SPECIFICATIONS

Feature	Detail
Model	GC30R
Power Output	30W
Color Temperature Range	2500K-10000K
Color Rendering Index (CRI)	95+
Television Lighting Consistency Index (TLCI)	96+
LED Beads	624 (Full-spectrum)
Battery Type	Built-in 36Wh Lithium Battery (7.2V/5000mAh)
Battery Life (Full Power)	Approx. 70-75 minutes
Charging Time	Approx. 90 minutes (with 30W fast charging)

Feature	Detail
Charging Port	USB Type-C (PD protocol compatible)
Protection Rating	IP6X (Waterproof & Dustproof)
Length (Inflated)	90cm (900mm)
Weight	Approx. 1.1 pounds (370g)
Mounting	Built-in N52 Magnets
Manufacturer	AMBITFUL

8. WARRANTY & SUPPORT

For warranty information and customer support, please refer to the documentation included with your product or visit the official AMBITFUL website. You may also contact the seller directly for assistance.

Protection plans are available for purchase separately. Please check Amazon for details on 2-Year or 3-Year Protection Plans.

