

[Manuals.plus](#) /

> [Fsbecl](#) /

> Fsbecl Shoe Storage Cabinet User Manual

## Fsbecl JXBey220

# Fsbecl Shoe Storage Cabinet User Manual

Model: JXBey220

Brand: Fsbecl

## IMPORTANT SAFETY INFORMATION

---

Please read all instructions carefully before assembly and use. Keep this manual for future reference.

- Always ensure the cabinet is level and stable before use.
- Secure the cabinet to the wall using the provided anti-tipping device to prevent tipping. This is crucial for safety, especially in households with children or pets.
- Do not overload the cabinet beyond its weight capacity. Refer to the specifications for maximum load.
- Always follow the assembly instructions carefully to ensure safe installation.

## PRODUCT OVERVIEW

---

The Fsbecl Shoe Storage Cabinet is designed to provide a stylish and space-saving solution for organizing footwear in entryways, foyers, or hallways. It features two flip drawers with a modern walnut finish and fluted panel design.



**Figure 1:** Front view of the Fsbecl Shoe Storage Cabinet in walnut finish. This image displays the two flip drawers with fluted panels and black handles, showcasing its modern aesthetic suitable for various home styles.

## SETUP AND ASSEMBLY

---

Your Fsbecl Shoe Storage Cabinet is designed for user-friendly assembly. All necessary parts are numbered, and clear step-by-step instructions are included in the product packaging. Please ensure you have all components before beginning assembly.

### Anti-Tipping Device Installation

For enhanced safety, it is mandatory to install the anti-tipping device. This device secures the cabinet to the wall, preventing accidental tipping, especially important in homes with children or pets.

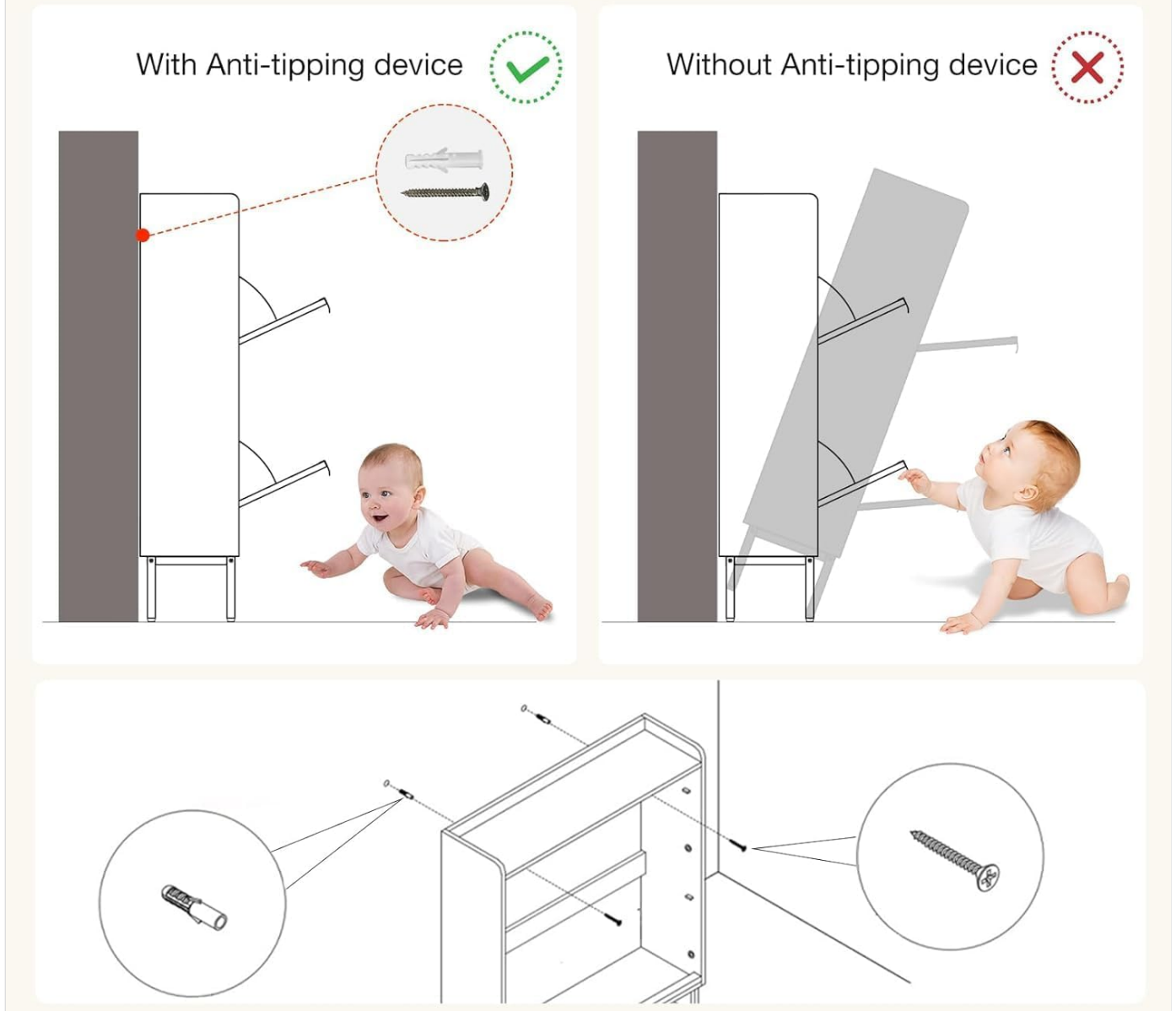
1. Locate the anti-tipping device components in the hardware pack.
2. Follow the specific instructions provided in your assembly manual to attach one end of the strap to the top rear of the

cabinet.

3. Position the cabinet against the desired wall.
4. Mark the wall where the other end of the strap will be secured.
5. Drill a pilot hole if necessary and secure the strap to the wall using the provided anchor and screw.
6. Ensure the strap is taut and the cabinet is firmly anchored.

## Anti-Tipping Device

### Ensuring your family's safety



**Figure 2:** Illustration demonstrating the proper installation of the anti-tipping device. This diagram shows how to secure the cabinet to the wall to prevent accidental tipping, highlighting the importance of this safety feature.

## OPERATING AND USAGE

The Fsbecl Shoe Storage Cabinet is designed for efficient and discreet shoe storage. Its two flip drawers offer ample space while maintaining a compact footprint.

### Capacity and Organization

Each flip drawer contains two layers of storage space. The cabinet can typically accommodate 12-16 pairs of shoes, depending on

their size and style. The internal shelves are removable, allowing for flexible storage of various shoe types, including high heels, slippers, sneakers, and boots.



**Figure 3:** The shoe cabinet with its two flip drawers open, revealing the internal storage compartments filled with various types of footwear. This illustrates the practical capacity and organization of the unit.

### **Adjustable Shelves**

The shelves within each flip drawer can be adjusted to two different positions or removed entirely to accommodate taller footwear. This feature enhances the versatility of the cabinet, allowing you to customize the storage space according to your needs.



## Two-position Adjustable and Removable Shelf

Suitable for various types of shoes



High Heels



Slippers



Sneakers



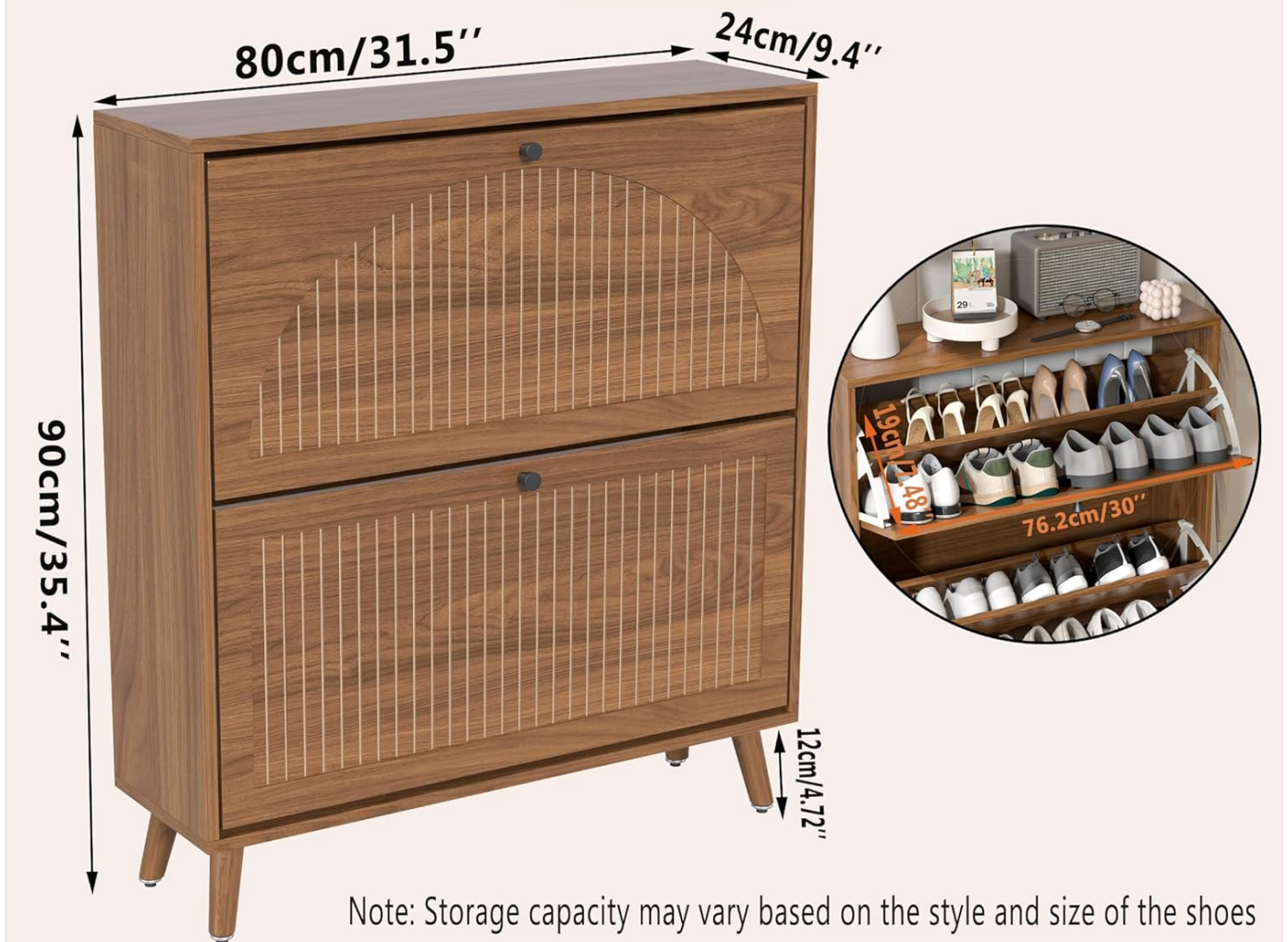
Martin Boots

**Figure 4:** A close-up view of the two-position adjustable and removable shelf mechanism inside the flip drawer. This highlights how the shelves can be reconfigured to fit different shoe heights.

### Additional Features

- **Spacious Desktop:** The top surface of the cabinet provides a convenient area for placing keys, wallets, decorative items, or small plants.
- **Elevated Base:** With a height of 4.72 inches from the ground, the cabinet allows most robotic vacuum cleaners to pass underneath, simplifying floor cleaning.
- **Ventilation:** A hollow design on the back panel promotes air circulation within the cabinet, helping to prevent odor buildup.

# PRODUCT SIZE



**Figure 5:** An image illustrating the overall product dimensions (9.4"D x 31.5"W x 35.4"H) and the clearance height from the floor, indicating compatibility with robotic vacuum cleaners.

## MAINTENANCE

To ensure the longevity and appearance of your Fsbecl Shoe Storage Cabinet, follow these simple maintenance guidelines:

- **Cleaning:** Wipe the cabinet surfaces regularly with a soft, damp cloth. Avoid using harsh chemicals or abrasive cleaners, as these can damage the finish.
- **Spills:** Immediately wipe up any spills to prevent staining or moisture damage to the engineered wood.
- **Dusting:** Dust the cabinet frequently with a dry, soft cloth to prevent dust buildup.
- **Sunlight Exposure:** Avoid prolonged exposure to direct sunlight, which can cause fading or discoloration of the wood finish.
- **Humidity:** Maintain a stable humidity level in the room to prevent warping or cracking of the wood material.

# DETAIL DISPLAY

High quality accessories provide you with a better experience



## Exquisite wood grain

Smooth and textured



## Removable laminates

Free adjustment of height



## Supporting wooden legs

Stable and not shaking

**Figure 6:** A detailed view highlighting the exquisite wood grain and smooth texture of the cabinet's surface, which contributes to its ease of cleaning and maintenance.

## TROUBLESHOOTING

If you encounter any issues with your Fsbecl Shoe Storage Cabinet, please refer to the following common problems and solutions:

Problem	Possible Cause	Solution
Cabinet wobbles or is unstable.	<p>Not level on the floor.</p> <p>Anti-tipping device not installed or improperly secured.</p> <p>Loose connections from assembly.</p>	<p>Adjust the adjustable feet at the base of the cabinet to ensure it is level.</p> <p>Ensure the anti-tipping device is correctly installed and securely anchored to the wall.</p> <p>Check all screws and fasteners and tighten them if loose.</p>

Problem	Possible Cause	Solution
Drawers do not open/close smoothly.	Obstruction inside the drawer. Misaligned assembly of drawer mechanism.	Remove any items that may be blocking the drawer's movement. Review the assembly instructions for the flip drawer mechanism and ensure all parts are correctly aligned and secured.
Missing or damaged parts upon delivery.	Packaging error or transit damage.	Do not proceed with assembly. Contact Fsbecl customer support immediately with your purchase details and a description of the missing/damaged parts.

## SPECIFICATIONS

Feature	Detail
Brand	Fsbecl
Model Name	Shoe Cabinets (JXBEG220)
Color	Walnut - With Shelf
Product Dimensions	9.4"D x 31.5"W x 35.4"H
Item Weight	48.5 Pounds
Material	Engineered Wood
Mounting Type	Floor Mount, Freestanding
Number of Shelves	2 (per drawer, removable)
Number of Compartments	4 (2 per flip drawer)
Special Features	Adjustable Feet, Anti-Tipping Device, Removable Shelf, Unbreakable
Room Type	Entryway, Foyer, Hallway
Assembly Required	Yes

## WARRANTY AND SUPPORT

For specific warranty information regarding your Fsbecl Shoe Storage Cabinet, please refer to the documentation included with your purchase or contact the retailer from whom you purchased the product. Warranty terms and conditions may vary. If you have any questions about assembly, product functionality, or require assistance with missing/damaged parts, please do not hesitate to contact Fsbecl customer support. Contact information is typically provided in the product packaging or on the manufacturer's official website.

For general inquiries, you may visit the Fsbecl store on Amazon: [Fsbecl Amazon Store](#)

