

FM15836

User Manual

Generic 4-in-1 Multi-Function Dragon Dildo

Model: FM15836

1. INTRODUCTION

Thank you for choosing the Generic 4-in-1 Multi-Function Dragon Dildo. This device is designed to provide a versatile experience with its unique combination of features, including a suction cup base, vibrating functions, heating capabilities, and thrusting modes. This manual provides essential information for the safe and effective use, maintenance, and care of your product.



Image 1.1: The 4-in-1 Multi-Function Dragon Dildo shown with its wireless remote control. The image highlights the product's textured surface and the remote's control buttons.

2. PRODUCT FEATURES

The Generic 4-in-1 Multi-Function Dragon Dildo offers a range of advanced features for enhanced functionality:

- **4-in-1 Multi-Function Design:** Combines knotted thrusting, suction cup, vibrating, and heating features in a single device.
- **Optimal Dimensions:** Features a 9.75-inch total length with a 7.68-inch insertable length, designed

with two seductive knots for varied stimulation.

- **Dynamic Modes:** Equipped with a robust motor offering 10 distinct thrusting modes and 10 vibrating modes, allowing for a total of 100 unique combinations.
- **Body-Safe Material:** Constructed from soft liquid silicone, ensuring a comfortable and safe experience.

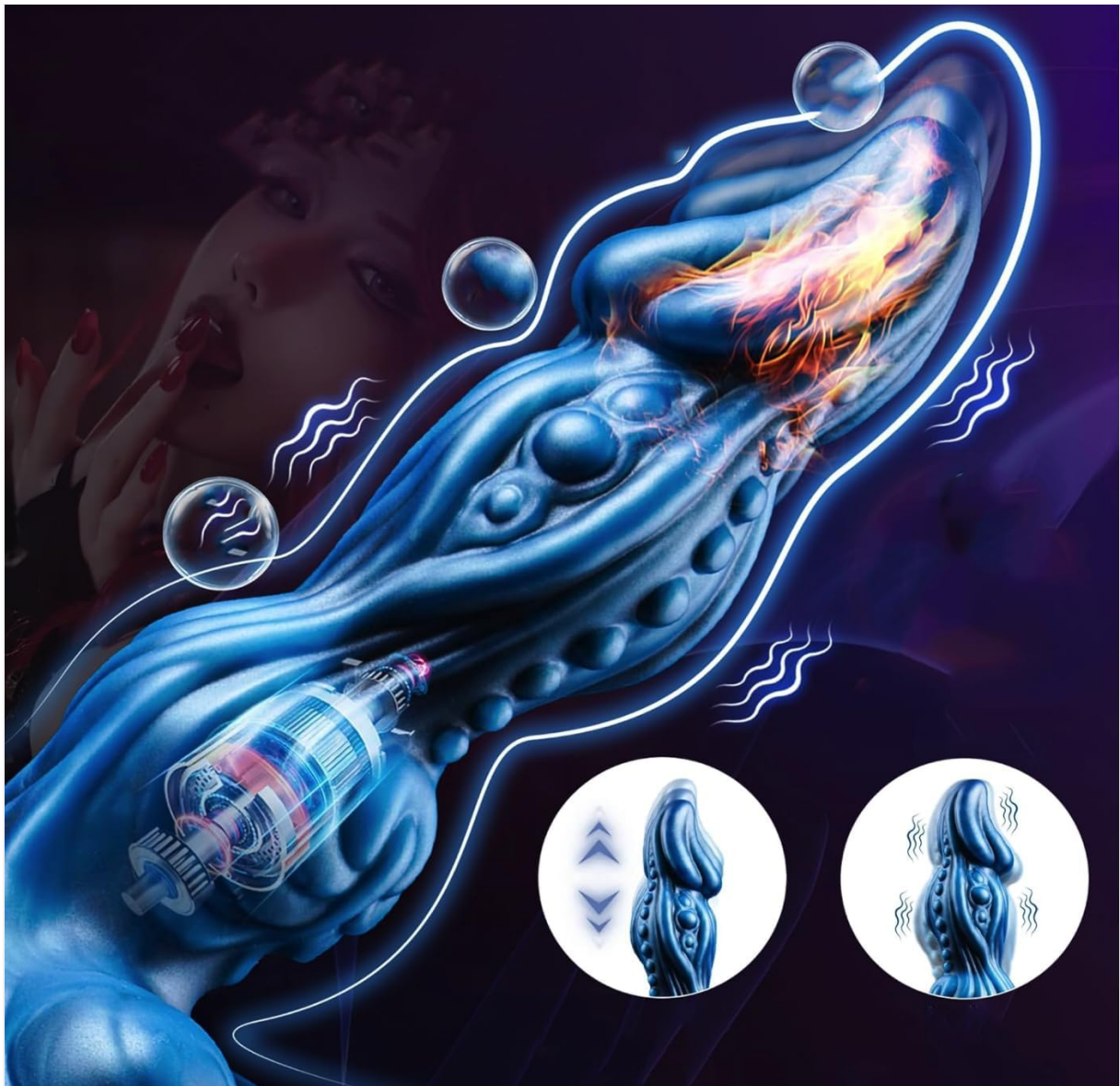


Image 2.1: An illustrative internal view of the device, highlighting the integrated heating element and vibration motor. This image demonstrates the technology behind the heating and vibrating functions.



Image 2.2: Three distinct views of the product, showcasing its unique dragon-inspired design and contours from different perspectives.

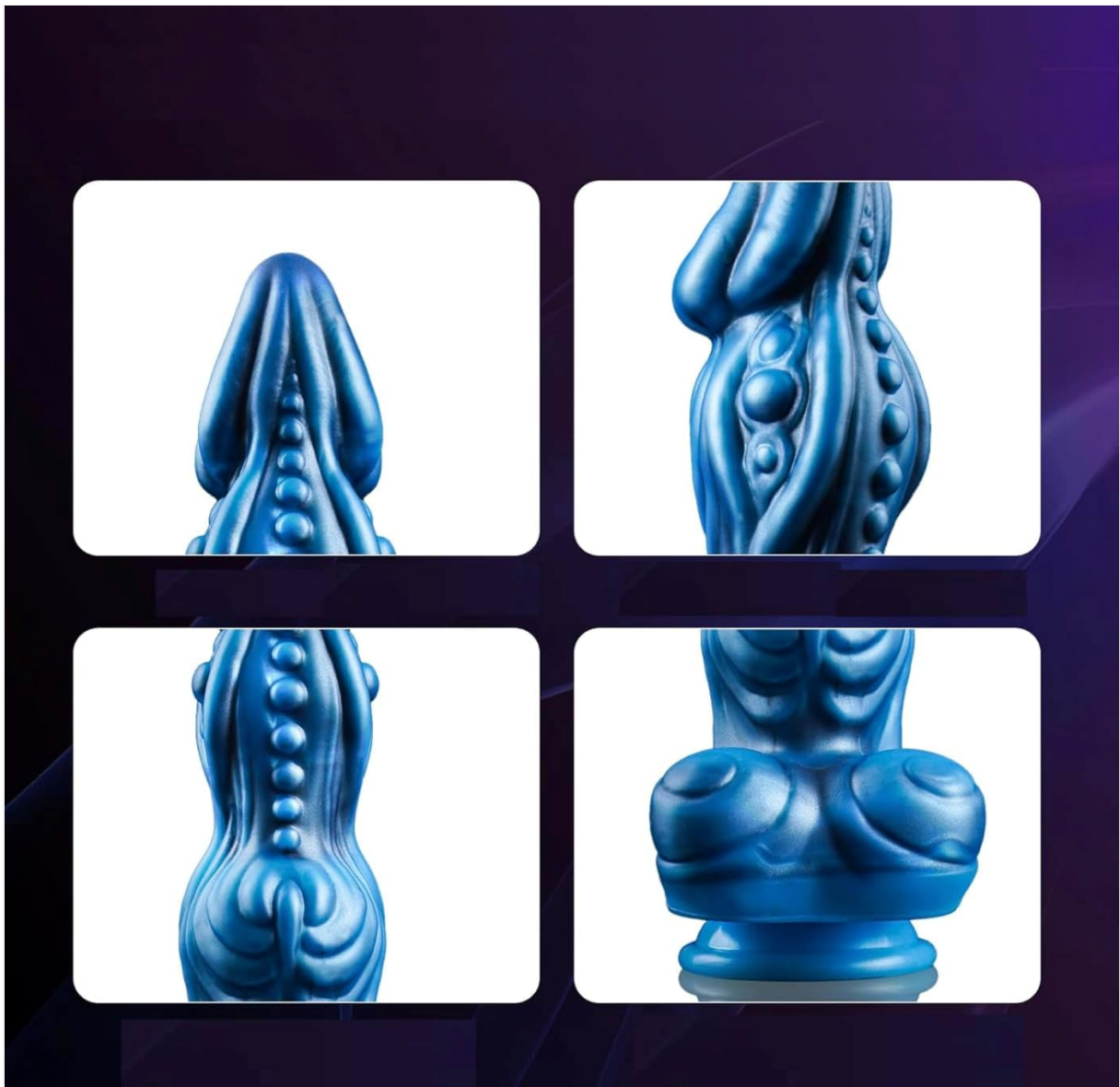


Image 2.3: Detailed close-up images of various sections of the product, emphasizing the intricate textures and anatomical design elements.

3. SETUP

Before first use, please follow these setup instructions:

1. **Initial Cleaning:** Thoroughly clean the product with warm water and a mild, toy-safe soap. Rinse completely and allow to air dry or pat dry with a lint-free cloth.
2. **Charging (if applicable):** While specific charging details are not provided, if your device includes a charging port, ensure it is fully charged before first use. Refer to any included charging cables or indicators.
3. **Remote Control:** Familiarize yourself with the buttons on the wireless remote control. Ensure any battery tabs are removed if present.
4. **Suction Cup Activation:** To use the suction cup, ensure the surface is clean, smooth, and dry. Press the base firmly onto the surface to create a vacuum seal.

4. OPERATING INSTRUCTIONS

The device is operated primarily via its wireless remote control. Ensure the remote is within range of the

product.

4.1 Power On/Off

- Press and hold the power button on the remote control to turn the device on or off.

4.2 Vibrating Modes

- Once powered on, press the vibration button (often indicated by a wave or pulse icon) to cycle through the 10 vibrating modes.
- Each press will change the vibration pattern or intensity.

4.3 Thrusting Modes

- Press the thrusting button (often indicated by an arrow or movement icon) to activate and cycle through the 10 thrusting modes.
- The device will extend and retract according to the selected pattern.

4.4 Heating Function

- Locate the heating button (often indicated by a flame or temperature icon) on the remote.
- Press this button to activate the internal heating element. The device will gradually warm up.
- Press again to deactivate the heating function.

4.5 Suction Cup Use

- Ensure the suction cup base and the desired surface are clean and dry.
- Press the suction cup firmly onto a smooth, non-porous surface (e.g., tile, glass, acrylic) until it adheres securely.
- To release, gently lift the edge of the suction cup to break the seal.

5. MAINTENANCE AND CARE

Proper maintenance ensures the longevity and hygiene of your product.

- **Cleaning:** The product care instructions specify