

Manuals.plus /

- › ELLA BELLA /
- › ELLA BELLA 6-in-1 Professional Hot Air Styler EB-F12 Instruction Manual

ELLA BELLA EB-F12

ELLA BELLA 6-in-1 Professional Hot Air Styler

MODEL: EB-F12

Introduction

The ELLA BELLA 6-in-1 Professional Hot Air Styler is a versatile hair styling tool designed for drying, curling, volumizing, and straightening. It features a powerful high-speed motor and intelligent heat control to minimize heat damage while providing efficient styling. This manual provides essential information for the safe and effective use of your new styler.

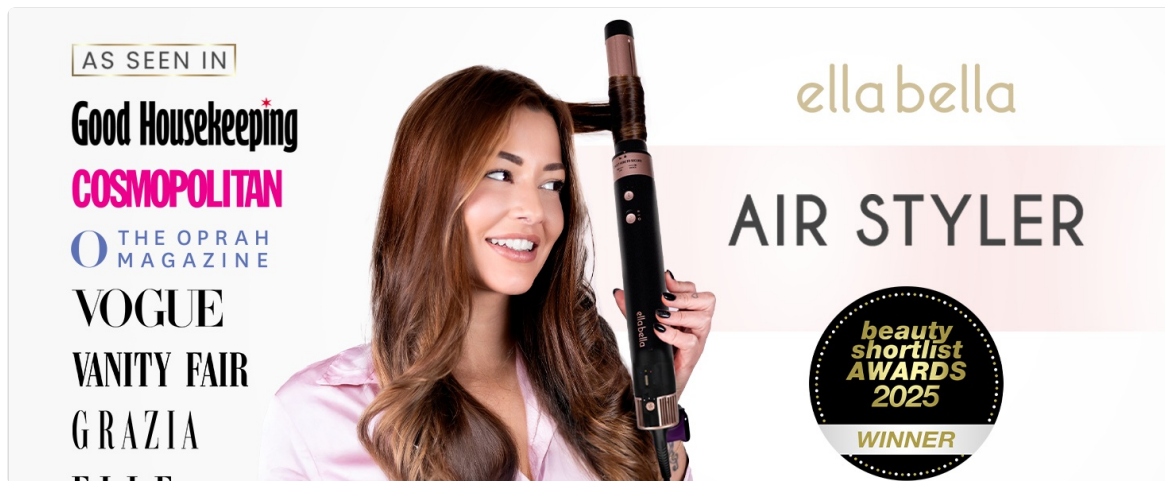


Image: The ELLA BELLA 6-in-1 Professional Hot Air Styler demonstrating its multiple styling capabilities.

Video: An introductory video showcasing the ELLA BELLA 6-in-1 Professional Hot Air Styler and its versatile styling capabilities.

What's in the Box

Your ELLA BELLA 6-in-1 Professional Hot Air Styler comes with the following components:

- Air Styler Unit
- Hair Dryer Nozzle
- Automatic Air Curler (Left Direction)
- Automatic Air Curler (Right Direction)
- Hot Round Brush (Volumizer)
- Straightening Brush
- Durable Protective Travel Case

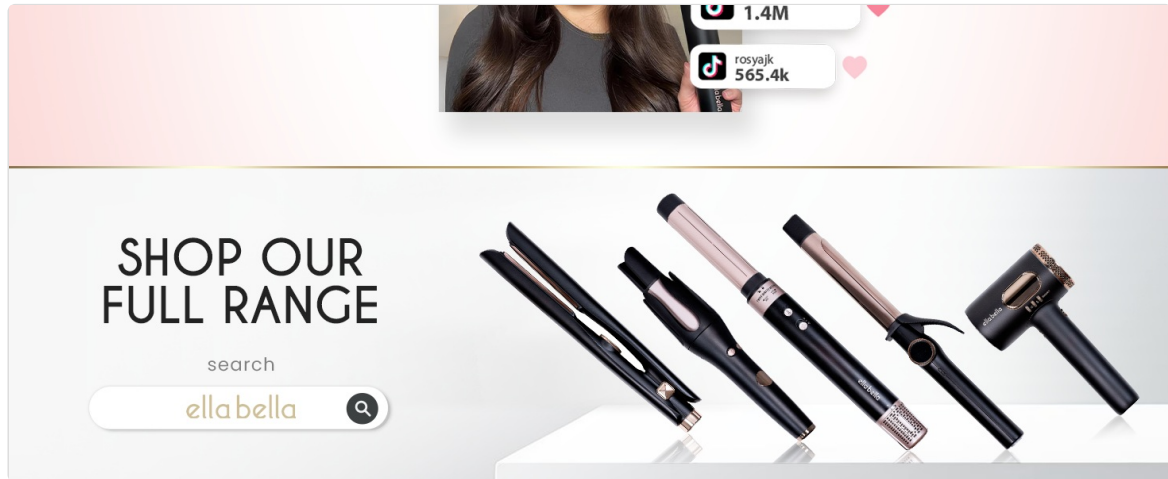


Image: All components included in the ELLA BELLA 6-in-1 Professional Hot Air Styler set.

Safety Information

Please read and understand all safety instructions before using the ELLA BELLA 6-in-1 Professional Hot Air Styler.

- Keep out of reach of children.
- Do not rinse or submerge the unit in water.
- Keep the power plug and cord away from heated surfaces.
- Do not use the hair styler while bathing or in wet environments.
- Always ensure the correct plug adapter is used when traveling internationally. Voltage conversion is not required as the unit is dual voltage (110V–240V).
- Do not use damaged adapters or outlets.

Setup

Before first use, ensure all packaging materials are removed. Familiarize yourself with the main unit and its attachments.

Attaching and Detaching Accessories

- To attach an accessory: Ensure the main unit is in the unlocked position (indicated by the unlock icon). Align the mark on the attachment with the mark on the handle and insert it. Rotate the lock ring clockwise to securely lock the attachment in place.
- To detach an accessory: Rotate the lock ring counterclockwise to unlock the attachment, then pull it off.

Video: Official quick guide demonstrating how to attach and detach the various accessories of the ELLA BELLA 6-in-1 Professional Hot Air Styler.

Operating Instructions

For effective styling, your hair should be damp. If your hair is very wet, use the hair dryer nozzle to quickly pre-dry it.

Power and Heat Settings

- Press the on/off and speed switch to turn the styler on.
- Use the heat setting switch to select cold, mild, or hot air, catering to various hair types and styling preferences.
- The unit features three temperature modes and two wind speed adjustments.

Using the Hair Dryer Nozzle

Attach the hair dryer nozzle to quickly dry your hair. Direct the airflow evenly over your hair until it is damp, not soaking wet.



Image: Using the hair dryer nozzle for initial drying.

Using the Volumizing Brush (Hot Round Brush)

For a big, bouncy look and added volume, attach the hot round brush. Position the brush at the roots of a hair section and slowly pull it through your hair while applying tension. Repeat until you achieve the desired volume.



WITH LUXURY TRAVEL CASE

ellabella = NO STRESS



We're here to offer you **advanced hair styling tools** that not only transform your look but also care for your hair. And whenever you need advice, our customer service team is **always ready to support you.**

Image: Achieving voluminous hair with the hot round brush.

Using the Straightening Brush

For a smooth, sleek finish and to conceal flyaways, switch to the straightening brush. Use the brush from root to tip, running it slowly down your hair to achieve a straight and polished look.

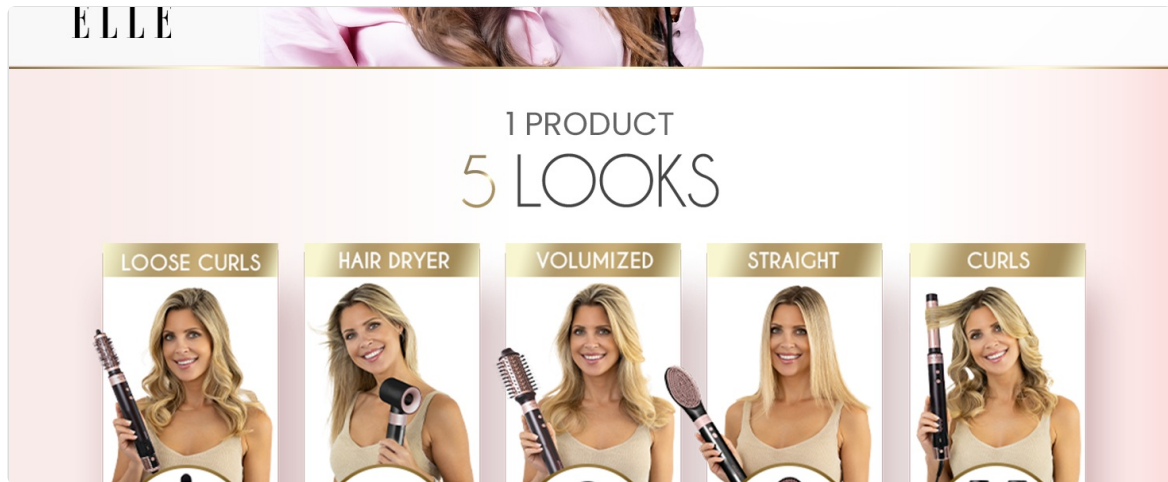


Image: Smoothing hair with the straightening brush.

Using the Automatic Air Curler Barrels

The Air Styler comes with left and right curling iron barrels specifically designed for each side of your head. Take a section of hair and guide the barrel towards the tips. The airflow will begin to draw and wrap the hair around the barrel automatically. Gently move the styler towards your head, but do not twist it. Hold for about 15 seconds. Long press the Cool Air button for 5 to 10 seconds to activate the cool shot and set the curl. Release the hair for a perfect curl.

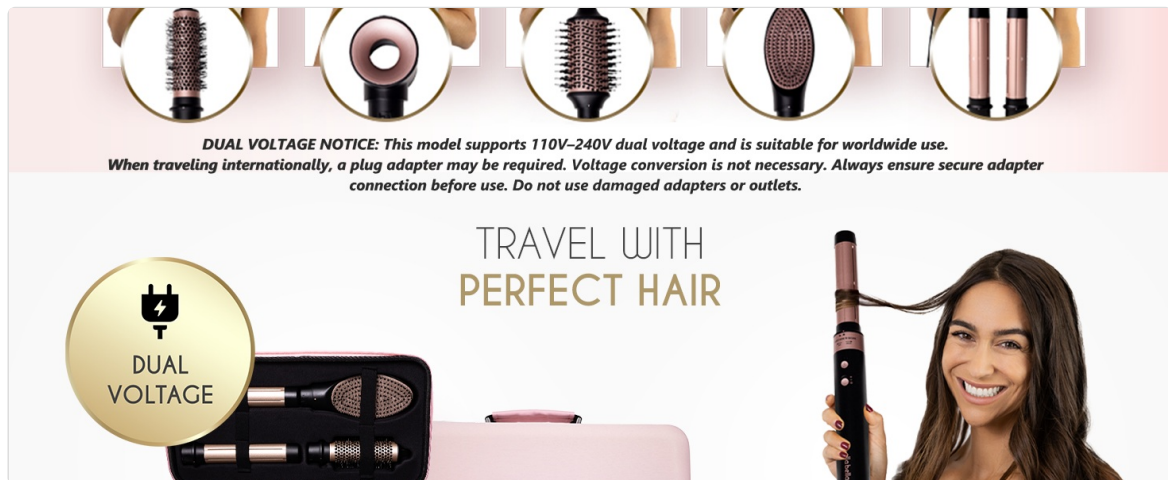


Image: Creating curls with the automatic air curler.

Maintenance

Proper maintenance ensures the longevity and optimal performance of your ELLA BELLA Hot Air Styler.

- **Cleaning:** Always unplug the unit and allow it to cool completely before cleaning. Wipe the main unit and attachments with a soft, damp cloth. Do not use abrasive cleaners or immerse any part of the styler in water.
- **Storage:** Store the styler and its attachments in the provided durable protective travel case in a cool, dry place. Ensure the cord is not wrapped tightly around the unit, as this can cause

damage.

Troubleshooting

If you encounter any issues with your ELLA BELLA Hot Air Styler, please refer to the following common solutions:

- **Styler not turning on:** Ensure the unit is securely plugged into a working electrical outlet. Check if the power switch is in the 'on' position.
- **Attachments not locking:** Make sure the main unit is in the unlocked position before inserting an attachment. Ensure the attachment is fully inserted and then rotate the lock ring clockwise until it clicks into place.
- **Reduced airflow or heat:** Check for any blockages in the air intake filter at the bottom of the main unit or in the attachment nozzles. Clean if necessary.
- **Hair not curling/straightening effectively:** Ensure your hair is damp, not wet or dry. Adjust the heat and speed settings according to your hair type and desired style. Take smaller sections of hair for better results.

If problems persist, please contact customer support.

Specifications

Product Dimensions	5 x 5 x 13 inches; 5.73 Pounds
Item Model Number	EB-F12
Manufacturer	ELLA BELLA
Wattage	1200 watts
Power Source	Corded Electric
Special Features	Ionic Technology, Dual Voltage (110V–240V)
Hair Type	All
Number of Speeds	2
Number of Settings	5 (Heat/Speed Combinations)
Included Components	Storage Case, 6 Attachments

Warranty and Support

The ELLA BELLA 6-in-1 Professional Hot Air Styler comes with a **2-year quality guarantee**. For any questions, concerns, or support needs, please contact ELLA BELLA customer service. Our team is available to assist you with product usage and any issues you may encounter.

Please refer to the product packaging or the official ELLA BELLA website for specific contact information and warranty claim procedures.