

## Manuals+

[Q & A](#) | [Deep Search](#) | [Upload](#)

[manuals.plus](#) /

› [VILTROX](#) /

› [VILTROX 28mm F4.5 XF Pancake APS-C Lens User Manual for Fujifilm X-Mount](#)

## VILTROX 28mm F4.5

# VILTROX 28mm F4.5 XF Pancake APS-C Lens

## USER MANUAL

### Introduction

This manual provides detailed instructions for the proper use and care of your VILTROX 28mm F4.5 XF Pancake APS-C Auto Focus Wide Angle Prime Lens. Please read this manual thoroughly before using the product to ensure optimal performance and longevity.

The VILTROX 28mm F4.5 XF lens is a compact, wide-angle prime lens designed for Fujifilm X-mount cameras. It offers a versatile perspective suitable for landscapes, architecture, and environmental portraits. Its lightweight and slim design make it highly portable.

### Key Features

- **Wide-Angle Perspective:** 28mm focal length (42mm equivalent on APS-C) for broad views.
- **Ultra-Light and Slim Design:** Weighs approximately 60g and measures 15.3mm, enhancing portability.
- **Efficient Autofocus:** Features a VCM autofocus motor for precise and quick focusing.
- **Exceptional Optical Quality:** Composed of 6 elements in 6 groups, including 2 ED and 2 aspherical lenses, for sharp images and vibrant colors.
- **Innovative Slide Cap Design:** Integrated lens cap that slides to transform into a lens, protecting it from dust and dirt.
- **Multi-layer Coating:** Minimizes ghosting and flare for clear images.
- **USB-C Firmware Upgrade Interface:** Allows for future firmware updates.

### Product Overview



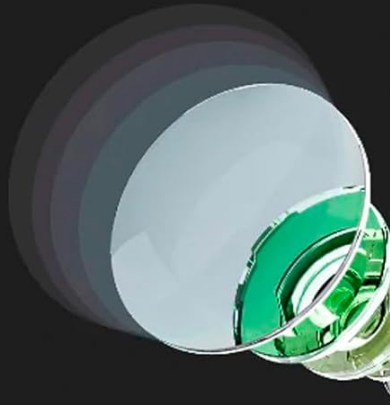
Figure 1: Front view of the VILTROX 28mm F4.5 XF Pancake Lens, showcasing its compact design and integrated lens cap.

## Detail Introduction



F4.5 Fixed Aperture

HD Nano Multi-layer Coating



Front Lens Waterproof and  
Anti-fouling Coating



Precision and Reliable  
Aluminum Alloy Mount



USB-C Firmware  
Upgrade Interface

Figure 2: Various angles of the lens, including front, rear, and side profiles, highlighting its slim form factor and Fujifilm X-mount interface.



Figure 3: Illustration of key features including HD Nano Multi-layer Coating, F4.5 Fixed Aperture, Front Lens Waterproof and Anti-fouling Coating, Precision Aluminum Alloy Mount, and USB-C Firmware Upgrade Interface.



Figure 4: Cross-section view showing the optical construction with 2 Aspherical and 2 ED lenses, contributing to image quality.

## Setup

### 1. Attaching the Lens

1. Align the white dot on the lens barrel with the white dot on your Fujifilm X-mount camera body.



2. Gently insert the lens into the camera mount.
3. Rotate the lens clockwise until it clicks into place, indicating it is securely locked.



Figure 5: The VILTROX 28mm F4.5 XF lens shown both attached to and detached from a Fujifilm X-T5 camera body, illustrating the mounting process.

## 2. Operating the Slide Cap

The lens features an integrated slide cap for protection and convenience.

- To open the lens for shooting, slide the lever from the 'OFF' position to the 'ON' position. This transforms the cap into the lens element.
- To close and protect the lens, slide the lever back to the 'OFF' position. This minimizes dust and dirt accumulation.



Figure 6: A close-up of the lens demonstrating the slide lever mechanism for opening and closing the integrated lens cap.



Figure 7: An animated representation showing the smooth transition of the slide cap from closed to open position.

## Operating the Lens

### 1. Autofocus Functionality

The VILTROX 28mm F4.5 XF lens utilizes a VCM autofocus motor for quick and precise focusing. It supports advanced autofocus features available on compatible Fujifilm X-mount cameras.

- **Eye Autofocus:** Detects and focuses on the subject's eyes for sharp portraits.
- **Face Autofocus:** Detects and focuses on the subject's face.

Ensure your camera's autofocus mode is set appropriately for optimal performance.

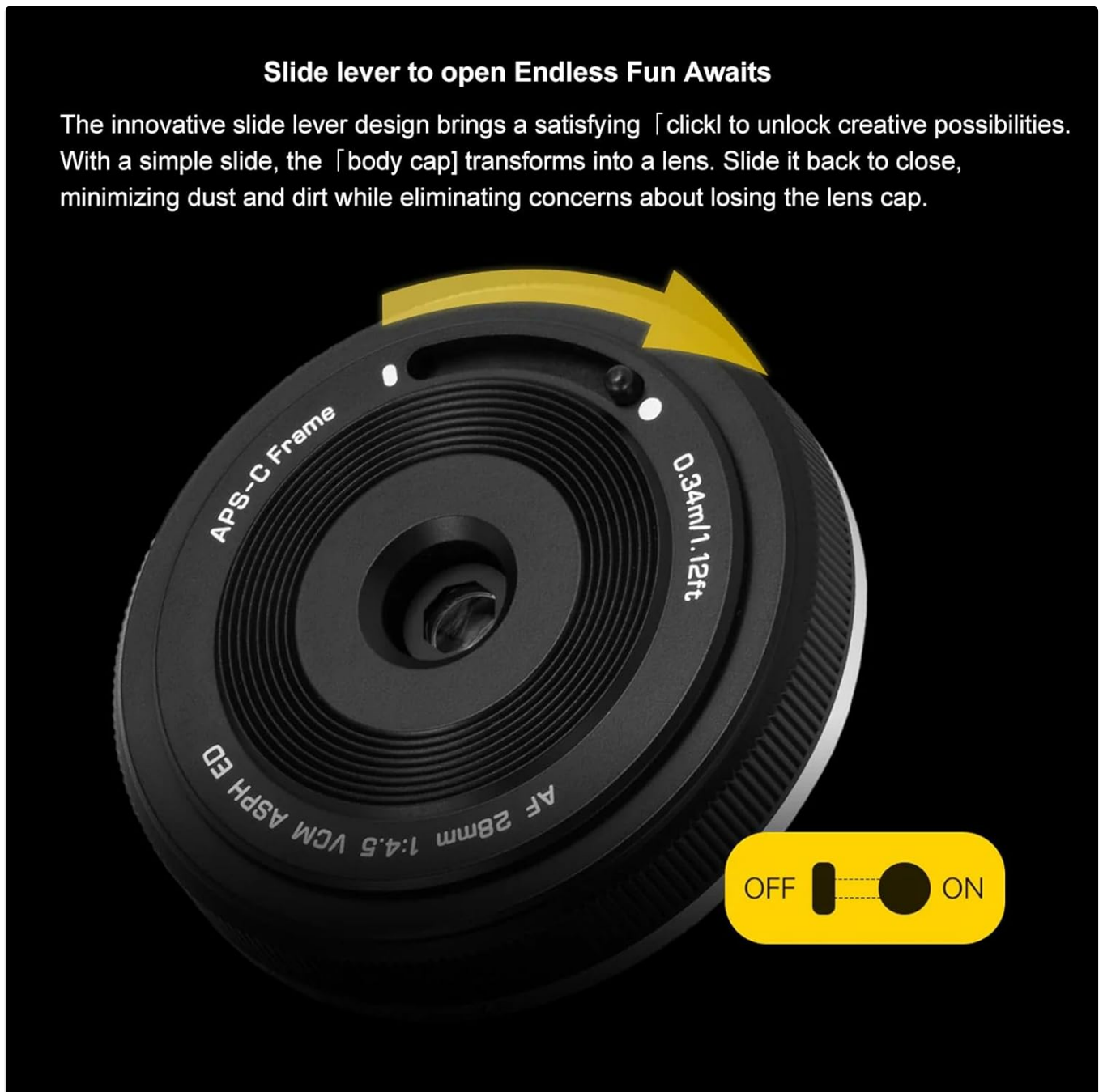


Figure 8: Visual representation of Eye Autofocus and Face Autofocus in action, highlighting the lens's ability to accurately track subjects.



Figure 9: A close-up image demonstrating the Eye Autofocus feature, with a green box indicating focus on the subject's eye.

## 2. Aperture

The lens features a fixed aperture of F4.5. This means the aperture cannot be adjusted manually on the lens itself.

Exposure control will be managed through your camera's shutter speed and ISO settings.

### 3. Focusing Distance

The minimum focusing distance for this lens is 0.34 meters (1.12 feet).

## Maintenance

### 1. Cleaning the Lens

- Use a soft, lint-free cloth or a lens brush to remove dust from the lens surfaces.
- For stubborn smudges or fingerprints, apply a small amount of lens cleaning solution to a clean microfiber cloth and gently wipe the lens in a circular motion.
- Avoid using abrasive materials or harsh chemicals, as these can damage the lens coatings.

### 2. Storage

- When not in use, ensure the slide cap is in the 'OFF' position to protect the lens elements.
- Store the lens in a dry, cool place, away from direct sunlight and extreme temperatures.
- Consider using a lens pouch or case for added protection during transport.

## Troubleshooting

### 1. Autofocus Issues

- **Lens not focusing:** Ensure the lens is securely mounted to the camera body. Check your camera's autofocus settings.
- **Slow autofocus:** In low light conditions or with low-contrast subjects, autofocus may be slower. Ensure adequate lighting or switch to manual focus if necessary.

### 2. Image Quality Concerns

- **Soft images:** Ensure the lens elements are clean and free from dust or smudges. Verify that the camera's focus is accurate.
- **Flare or ghosting:** While the lens has multi-layer coatings, strong direct light sources can still cause flare. Use a lens hood (if compatible) or adjust your shooting angle to minimize this.

### 3. Firmware Updates

The lens features a USB-C port for firmware updates. Visit the official VILTROX website for the latest firmware and instructions. Keeping your lens firmware updated can improve performance and compatibility.

## Specifications

Feature	Specification
Focal Length	28mm (42mm equivalent on APS-C)
Maximum Aperture	F4.5
Minimum Aperture	F4.5 (Fixed)
Lens Construction	6 elements in 6 groups



Feature	Specification
Special Elements	2 ED lenses, 2 Aspherical lenses
Minimum Focusing Distance	0.34m (1.12ft)
Maximum Magnification	0.1x
Autofocus Motor	VCM
Filter Size	Not specified (integrated cap design)
Dimensions (D x L)	Approx. 60.5mm x 15.3mm
Weight	Approx. 60g (2.1 oz)
Compatible Mount	Fujifilm X-Mount
Firmware Interface	USB-C



Figure 10: Visual representation of the lens's compact size and weight (60g), demonstrating its portability and slim profile.



Figure 11: Modulation Transfer Function (MTF) chart illustrating the lens's optical performance, alongside an image of the lens held in hand.

## What's in the Box

---

- VILTROX 28mm F4.5 XF Pancake APS-C Lens
- Lens Cap (integrated)
- User Manual
- Warranty Card
- Package Box
- Clean Cloth

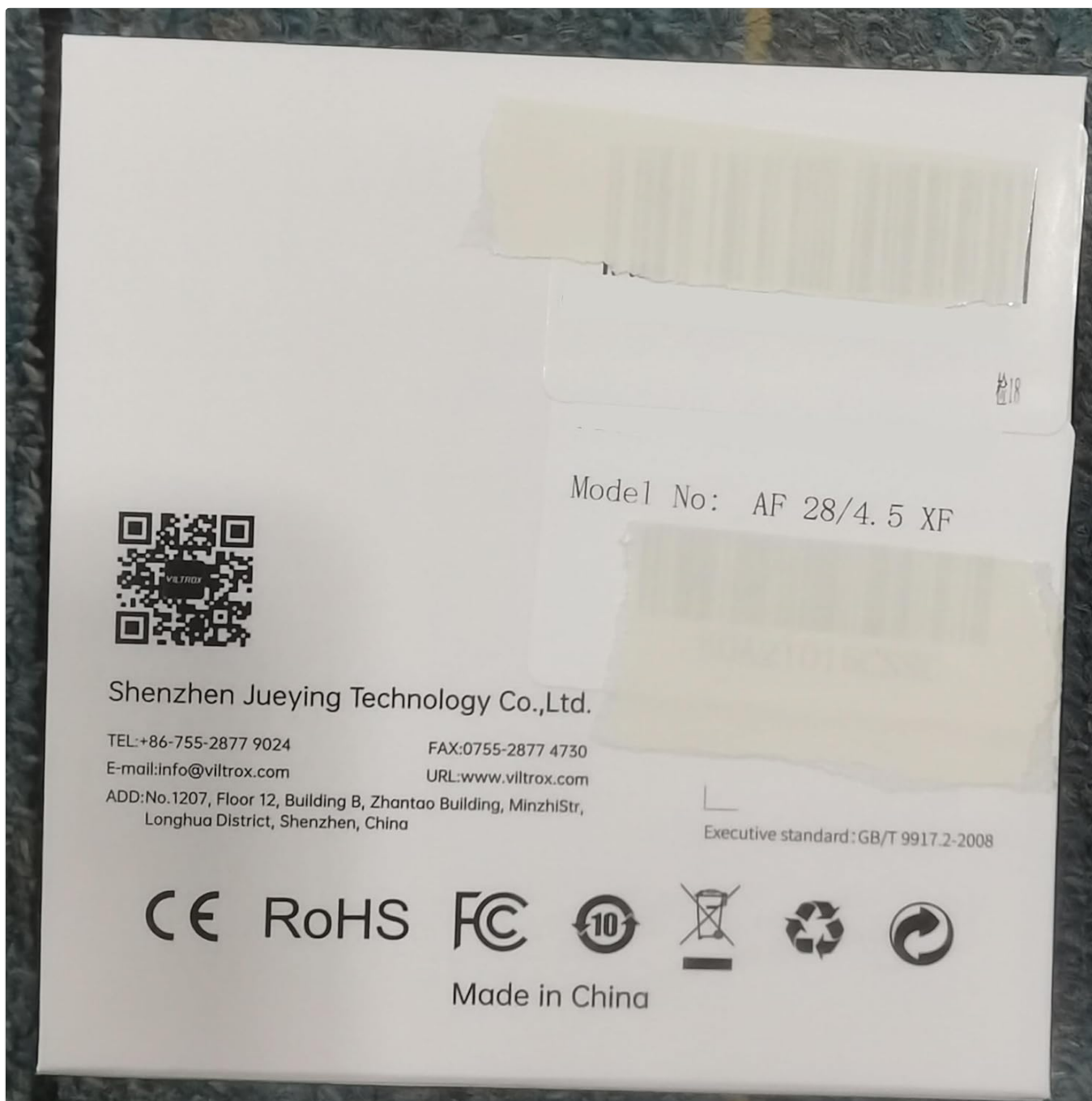


Figure 12: The lens package contents, including the lens, integrated lens cap, user manual, and warranty card.



Figure 13: Another view of the product packaging and its contents, confirming the included accessories.

## Warranty and Support

VILTROX products are covered by a limited warranty. Please refer to the included warranty card for specific terms and conditions. For technical support, firmware updates, or any product-related inquiries, please visit the official VILTROX website or contact customer service.

Official Website: [www.viltrox.com](http://www.viltrox.com)

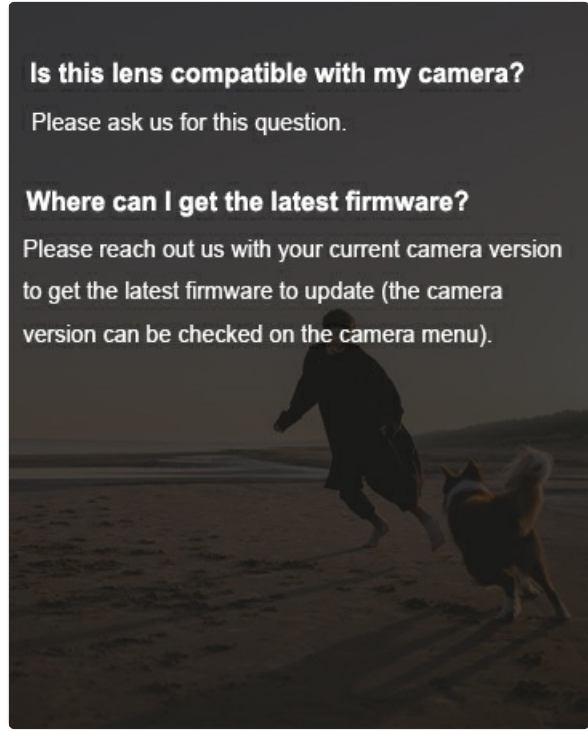





Figure 14: VILTROX brand information, indicating their establishment in 2009 and commitment to customer support.

Related Documents - 28mm F4.5

	<p><a href="#">Viltrox AF 15mm F1.7 XF Lens Compatibility List v1.0.1</a></p> <p>Viltrox AF 15mm F1.7 XF lens compatibility guide for Fujifilm X-Mount cameras. Check camera model and firmware compatibility for photo and video modes.</p>
	<p><a href="#">Viltrox AF 56/1.7 XF Lens for Fujifilm X-Mount - Features, Specifications, and Guide</a></p> <p>Detailed information on the Viltrox AF 56/1.7 XF prime lens for Fujifilm X-Mount cameras. Discover its features, optical design, specifications, MTF charts, and usage instructions for professional photography.</p>
	<p><a href="#">Viltrox AF 23mm f/1.4 XF and Z Mount Camera Lens Specifications</a></p> <p>Comprehensive technical specifications, features, and performance data for the Viltrox AF 23mm f/1.4 camera lenses designed for Fujifilm X and Nikon Z mounts, including MTF charts and optical design details.</p>



	<p><a href="#">VILTROX EF-FX1 Pro Auto Focus Mount Adapter for Canon EF to Fuji X Cameras</a></p> <p>The VILTROX EF-FX1 Pro is an auto-focus mount adapter designed to connect Canon EF/EF-S lenses to Fuji X-mount mirrorless cameras, expanding lens compatibility. Features include aperture control, firmware updates, and electronic contacts for seamless operation.</p>
	<p><a href="#">VILTROX AF 135/1.8 LAB Z Lens: Features, Specifications, and Manual</a></p> <p>Comprehensive guide to the VILTROX AF 135/1.8 LAB Z Z-mount camera lens, covering features, identification of parts, functions, handling, safety, and technical specifications.</p>
	<p><a href="#">TTARTISAN AF 14mm f3.5 Lens User Manual &amp; Specifications</a></p> <p>Comprehensive user manual and technical specifications for the TTARTISAN AF 14mm f3.5 APS-C prime camera lens. Includes installation, safety, and care instructions.</p>