

manuals.plus /

- › [YUNZII](#) /
- › [YUNZII IF99 Wireless Mechanical Gaming Keyboard User Manual](#)

YUNZII IF99

YUNZII IF99 Wireless Mechanical Gaming Keyboard User Manual

Model: **IF99**

Brand: **YUNZII**

1. INTRODUCTION

The YUNZII IF99 is a versatile wireless mechanical gaming keyboard designed for enhanced productivity and gaming performance. It features a customizable LCD display, QMK/VIA programmability, tri-mode connectivity (Bluetooth, 2.4GHz wireless, USB-C wired), a gasket-mounted hot-swappable design, and vibrant RGB lighting. This manual provides detailed instructions for setting up, operating, maintaining, and troubleshooting your IF99 keyboard.

YUNZII

IF99

**Wireless Mechanical
Keyboard with LCD Screen**



**Keyboard with
Numpad**



**LCD Screen
Design**



BT/2.4G/Wired



**QMK/VIA
Programmable**



**Mac/Win/Linux/
Android System**



Hot Swappable



**South-facing
RGB**



N-Key Rollover



**8000 mAh
battery**



**Extra Transparent
Keycaps**

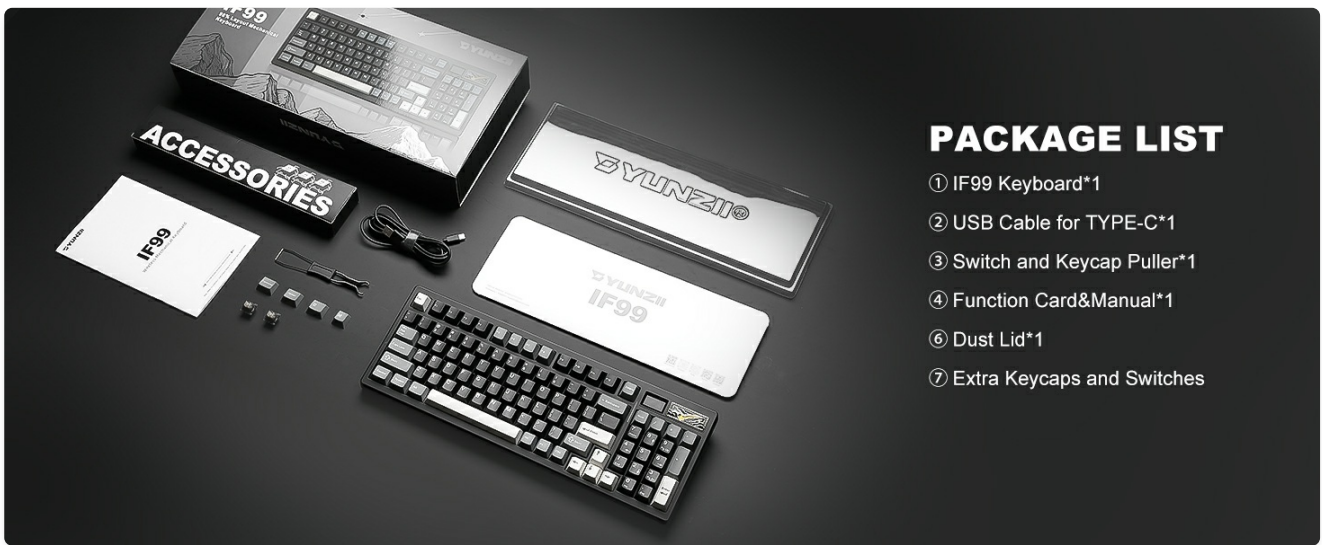
WEIGHT:2.73lb/1.238kg

Image: Overview of YUNZII IF99 features including LCD screen, QMK/VIA, tri-mode connectivity, hot-swappable design, and 8000mAh battery.

2. PACKAGE CONTENTS

Upon unboxing, please verify that all the following items are included in your package:

- YUNZII IF99 Keyboard
- USB Cable (Type-C)
- Switch and Keycap Puller
- Function Card & Manual
- Dust Lid
- Extra Keycaps and Switches



PACKAGE LIST

- ① IF99 Keyboard*1
- ② USB Cable for TYPE-C*1
- ③ Switch and Keycap Puller*1
- ④ Function Card&Manual*1
- ⑥ Dust Lid*1
- ⑦ Extra Keycaps and Switches

Image: Contents of the YUNZII IF99 keyboard package, including the keyboard, cables, tools, and extra accessories.

3. PRODUCT OVERVIEW

Familiarize yourself with the key components and structural design of the YUNZII IF99 keyboard.



① Type-C Port

② Tri-Mode Switch: 2.4G/Wired/Bluetooth

③ Caps Lock Indicator

④ LOG LED

⑤ LCD Screen

⑥ 2.4G Dongle Storage Bin

⑦ Badge

⑧ Num Lock

Image: Labeled diagram of the YUNZII IF99 keyboard, highlighting the Type-C Port, Tri-Mode Switch, Caps Lock Indicator, LOG LED, LCD Screen, 2.4G Dongle Storage Bin, Badge, and Num Lock.

3.1 Gasket Mount Structure

The IF99 features a gasket-mounted design with multiple layers of sound-absorbing material to reduce noise and enhance typing comfort. This 5-layer dampening design contributes to a unique and satisfying typing experience.

Gasket Mount Structure 5-Layer Dampening Design

- 1-Metal Badge
- 2-2.4GHz Receiver
- 3-Upper Keyboard Case
- 4-LED Screen
- 5-Double Shot PBT Keycaps
- 6-Switches
- 7-Silicone Cover
- 8-PC plate
- 9-Sound Absorbing Foam
- 10-Switch Pad
- 11-PET Sound Foam
- 12-PCBA PCB Board
- 13-PCB Board
- 14-Switch Foam
- 15-Button silicone pad
- 16-Battery
- 17-Bottom Case
- 18-Chassis Hardware
- 19-Chassis Decorations
- 20-Kickstands

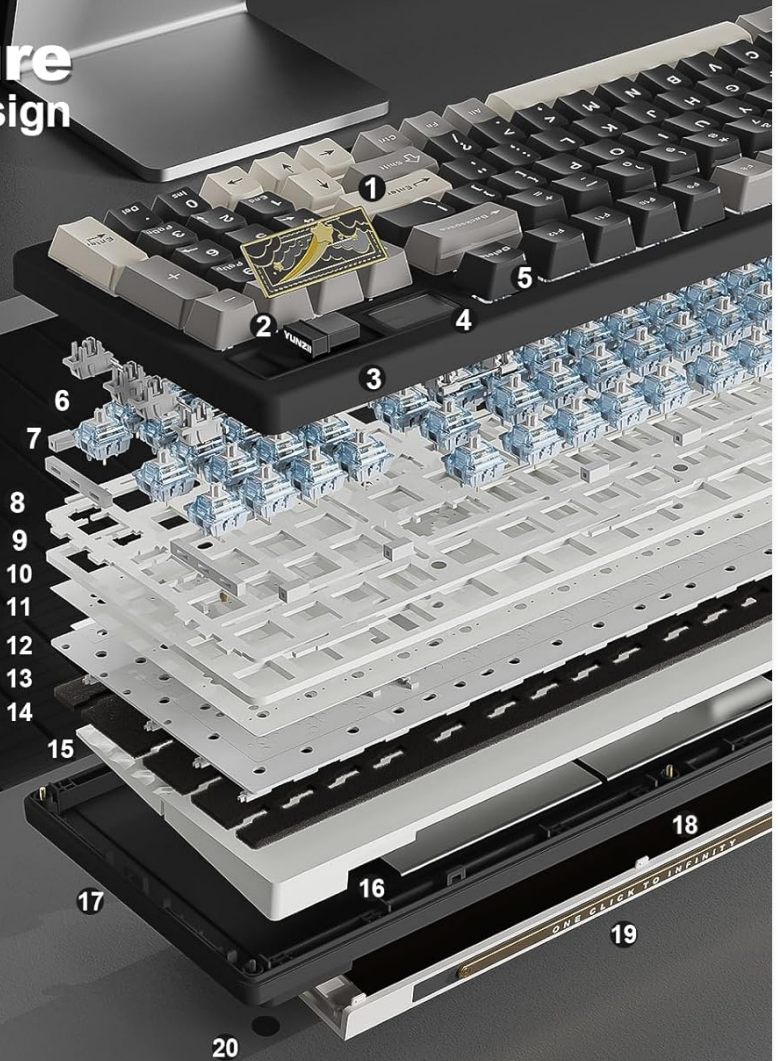


Image: Exploded view diagram illustrating the 5-layer gasket mount structure of the YUNZII IF99 keyboard, detailing components like the metal badge, 2.4GHz receiver, upper keyboard case, LED screen, PBT keycaps, switches, silicone cover, PC plate, sound absorbing foam, switch pad, button sound foam, PCBA PCB board, PCB board, switch foam, button silicone pad, battery, bottom case, chassis hardware, and kickstands.

3.2 Hot-Swappable Switches

The keyboard supports full-key hot-swappable switches, allowing easy replacement of 3-pin or 5-pin switches without soldering. This enables customization of the tactile feel and sound of your keystrokes.

Hot Swappable Custom Keyboard

South Facing LEDs
(Better RGB effect)



Pre-lubed Switches
(Creamy typing sound)



PC Plate
(Smoother typing)

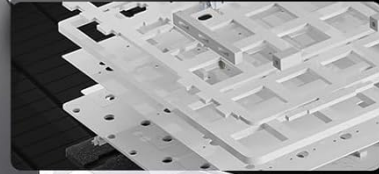


Image: Close-up view demonstrating the hot-swappable feature of the YUNZII IF99 keyboard, showing switches being removed and inserted, along with details on south-facing LEDs, pre-lubed switches, and the PC plate.

3.3 Double-Shot PBT Keycaps

The IF99 is equipped with durable double-shot PBT keycaps that resist wear and fading, providing a superior fingertip feel and exceptional longevity.

4. SETUP

The YUNZII IF99 offers three connectivity modes: USB-C wired, 2.4GHz wireless, and Bluetooth 5.0.

TRI-MODE CONNECTION



Image: Illustration of the YUNZII IF99 keyboard's tri-mode connection capabilities, showing it connected via USB-C, Bluetooth, and 2.4GHz wireless to various devices like a monitor, tablet, and smartphone.

4.1 Wired Connection (USB-C)

1. Connect the provided USB-C cable to the keyboard's Type-C port.
2. Connect the other end of the USB-C cable to an available USB port on your computer.
3. The keyboard will be automatically recognized and ready for use.

4.2 2.4GHz Wireless Connection

1. Locate the tri-mode switch on the keyboard and slide it to the "2.4G" position.
2. Remove the 2.4GHz USB dongle from its storage slot on the keyboard (usually under the magnetic badge).
3. Plug the 2.4GHz dongle into an available USB port on your computer.
4. Long press **Fn + 4** on the keyboard. The keyboard's backlight will indicate successful pairing.

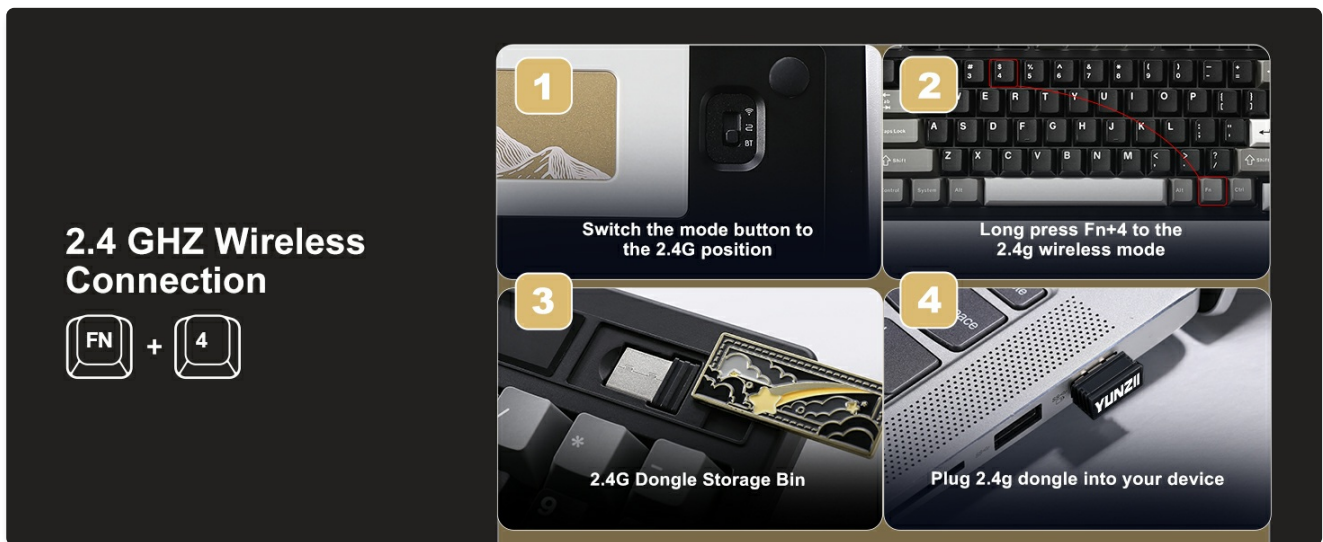


Image: Step-by-step guide for connecting the YUNZII IF99 keyboard via 2.4GHz wireless, showing the mode switch, Fn+4 key combination, dongle location, and dongle insertion.

4.3 Bluetooth Connection

The keyboard supports up to 3 Bluetooth devices.

1. Locate the tri-mode switch on the keyboard and slide it to the "BT" position.
2. Short press **Fn + 1**, **Fn + 2**, or **Fn + 3** to select a Bluetooth channel. The corresponding key will flash rapidly, indicating pairing mode.
3. On your device (computer, tablet, phone), open Bluetooth settings and search for "YUNZII IF99 BT1/BT2/BT3".
4. Select the keyboard to connect. Once connected, the backlight will remain steady.

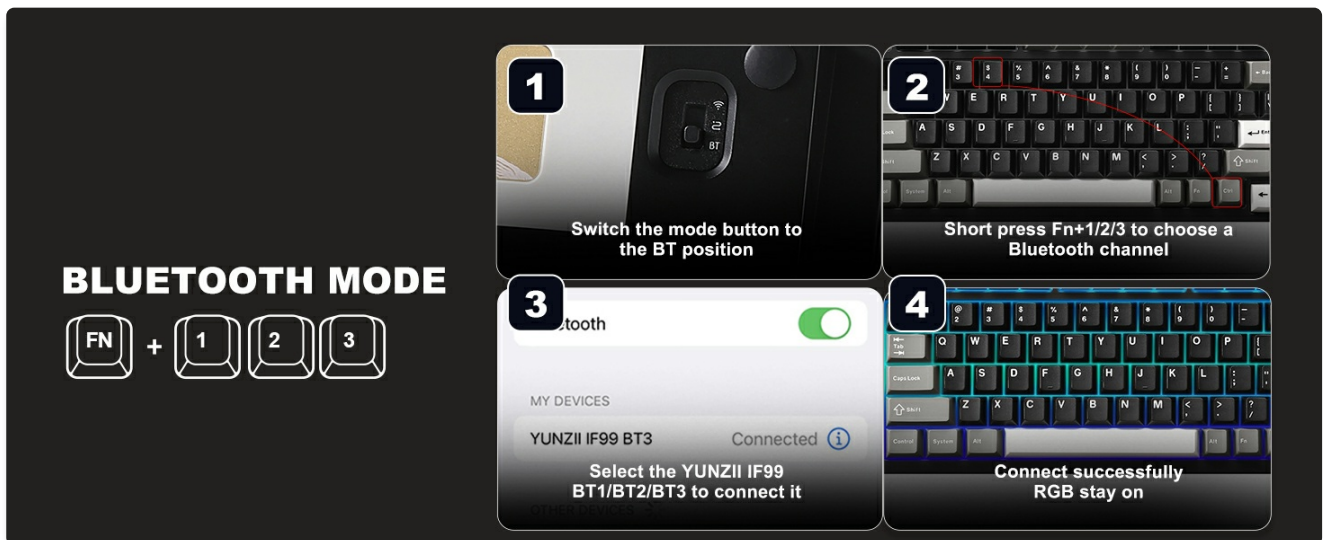


Image: Step-by-step guide for connecting the YUNZII IF99 keyboard via Bluetooth, showing the mode switch, Fn+1/2/3 key combinations, and device pairing process.

4.4 Operating System Compatibility

The YUNZII IF99 keyboard is compatible with Windows, macOS, Linux, and Android systems. It can connect to various devices including laptops, PCs, smartphones, tablets, and gaming consoles like PS and Xbox.

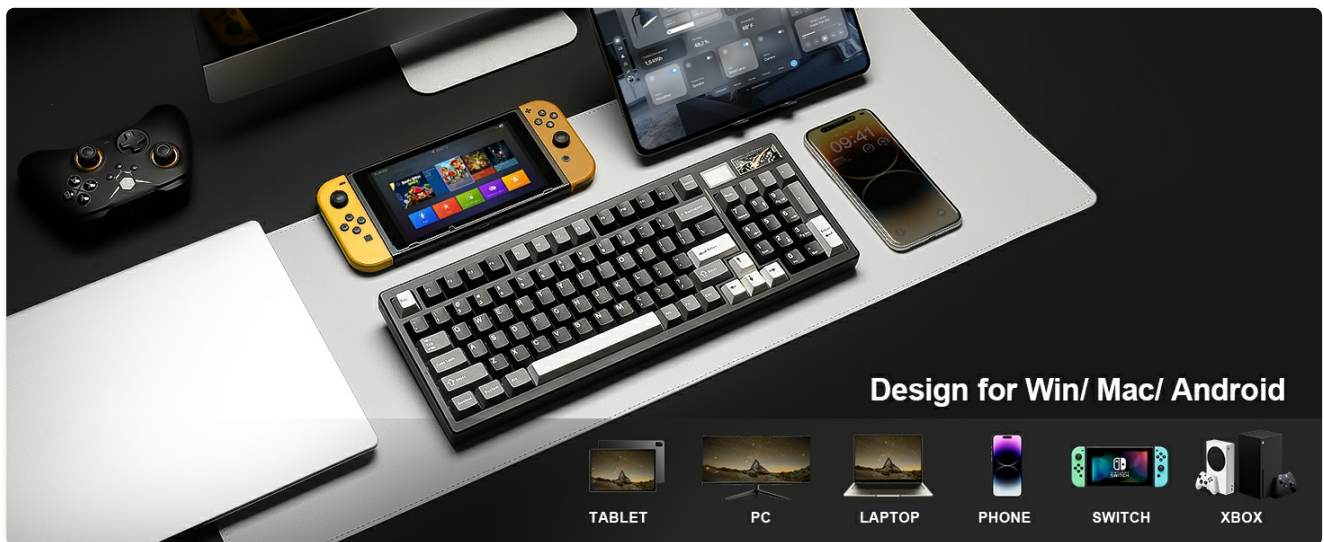


Image: Visual representation of the YUNZII IF99 keyboard's compatibility with various devices and operating systems, including tablets, PCs, laptops, phones, Nintendo Switch, and Xbox.

5. OPERATION

5.1 Customizable LCD Display

The IF99 features a smart LCD display that can show time, GIFs, photos, battery status, connection mode, and more. You can personalize it with your own images or GIFs.

- **Fn + 8:** Home Page (Displays time, battery, connection mode, layout).
- **Fn + 9:** Picture Page (Showcase uploaded pictures).
- **Fn + 0:** GIF Page (Use web software to customize the GIF page).

Customizable **LCD** Screen Design



Image: Detailed view of the YUNZII IF99's customizable LCD screen, showing examples of the Home Page (time, battery, connection), Picture Page, and GIF Page, along with the dongle slot.

5.2 QMK/VIA Programmability

The IF99 is compatible with QMK and VIA software, allowing extensive customization of key mappings, macros, and RGB lighting effects. This open-source platform provides full control over your typing experience.

Programmable QMK/VIA



RGB Design

Personalize your own
backlighting



Macro Editing

Combine multiple
shortcuts in one key



Remap keys

Personal customize keys
to improve efficiency



Image: Screenshot of the QMK/VIA software interface demonstrating the ability to customize RGB lighting, edit macros, and remap keys on the YUNZII IF99 keyboard.

How to Customize with QMK/VIA:

1. Connect the keyboard to your computer in wired mode.
2. Download the JSON file for the IF99 model from the official YUNZII website.
3. Open the VIA website (usevia.app) and click "Authorize device" to connect with the keyboard.
4. Click "SETTINGS" and turn on "Show Design Tab".
5. Open the DESIGN page on the VIA website and upload the JSON file downloaded from YUNZII.
6. Once connected, you can proceed with custom settings for key mapping, macros, and RGB.

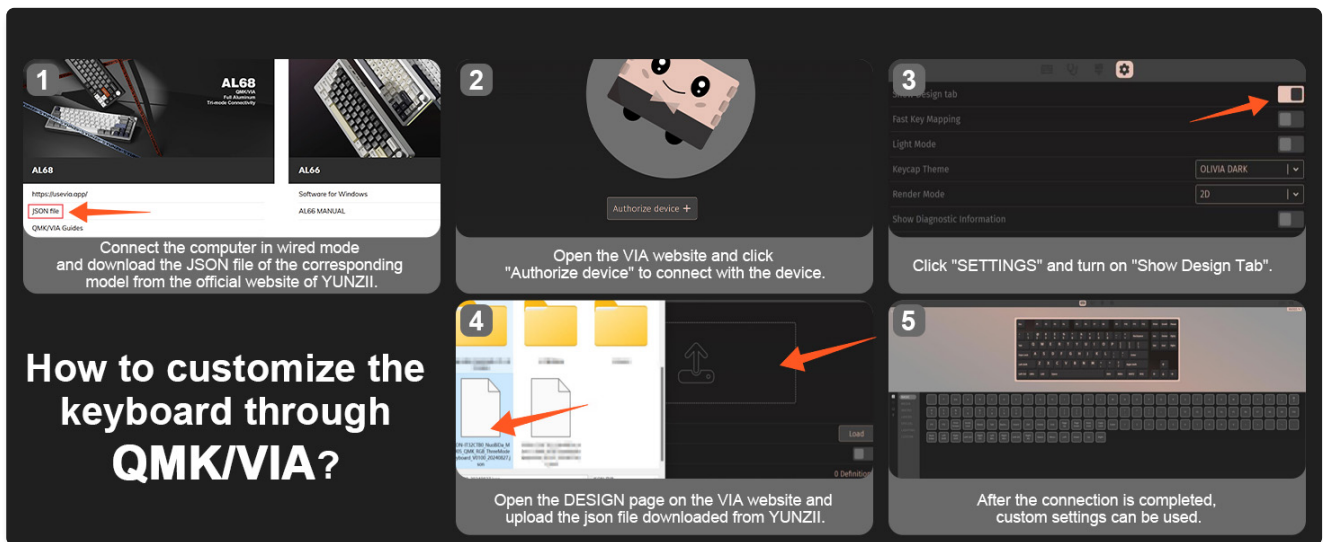


Image: Step-by-step visual guide on how to customize the YUNZII IF99 keyboard using QMK/VIA software, detailing the process of connecting, downloading JSON, authorizing the device, enabling the design tab, and uploading the JSON file.

5.3 RGB Lighting Control

The IF99 features vibrant 16.8 million RGB colors with south-facing LEDs for enhanced lighting effects. You can control the lighting directly from the keyboard or through QMK/VIA software.

RGB Backlight Shortcuts:

- **Fn + Backspace:** Backlight ON/OFF
- **Fn + |:** Change Backlight Effect
- **Fn + Enter:** Change Backlight Color
- **Fn + ↑:** Brightness Increase
- **Fn + ↓:** Brightness Decrease
- **Fn + →:** Blinking Speed Increase
- **Fn + ←:** Blinking Speed Decrease



Image: Visual guide to RGB backlight shortcuts on the YUNZII IF99 keyboard, showing key combinations for turning backlight on/off, changing effects, colors, brightness, and blinking speed.

5.4 Battery Management

The YUNZII IF99 is equipped with a high-capacity 8000mAh battery, providing extended usage times. To check the battery level, press **Fn + Right Ctrl**.

- Approximate battery life with RGB ON: 36 hours
- Approximate battery life with RGB OFF: 130 hours
- Approximate charging time: 18 hours



Image: Information on the YUNZII IF99's 8000mAh battery, highlighting fast charging, long-lasting power, and estimated usage times with and without RGB lighting.

6. MAINTENANCE

Proper maintenance ensures the longevity and optimal performance of your YUNZII IF99 keyboard.

6.1 Cleaning

- Use the provided dust cover when the keyboard is not in use to prevent dust accumulation.
- For general cleaning, use a soft, lint-free cloth.
- To clean between keycaps, use compressed air or a small brush.
- Keycaps can be removed using the keycap puller for deeper cleaning. Clean them with mild soap and water, then ensure they are completely dry before reattaching.

6.2 Switch Replacement

Thanks to the hot-swappable design, switches can be easily replaced. Use the provided switch puller to gently remove switches. Align new 3-pin or 5-pin switches with the PCB sockets and press firmly until they click into place. Ensure pins are straight before insertion to avoid bending.

7. TROUBLESHOOTING

If you encounter issues with your YUNZII IF99 keyboard, refer to the following common problems and solutions:

Problem	Possible Cause	Solution
Keyboard not responding in wireless mode.	Low battery, incorrect mode selected, dongle not plugged in, Bluetooth not paired.	Charge the keyboard. Ensure the mode switch is set to 2.4G or BT. Re-insert the 2.4G dongle or re-pair Bluetooth. Try wired mode to confirm keyboard functionality.

Problem	Possible Cause	Solution
Keys not registering or double-typing.	Loose or faulty switch, dust/debris under keycap.	Remove the keycap and switch. Clean the area. Re-insert the switch firmly. If problem persists, replace the switch with an extra one.
RGB lighting not working or stuck.	Lighting turned off, software conflict, low battery.	Press Fn + Backspace to toggle lighting. Charge the keyboard. Use QMK/VIA software to reset or adjust lighting settings.
LCD display not showing information.	Incorrect function key pressed, software issue.	Ensure you are pressing the correct function key (Fn + 8/9/0). Check QMK/VIA settings if customization is not displaying correctly.
Cannot connect via QMK/VIA.	Keyboard not in wired mode, incorrect JSON file, software authorization issue.	Ensure keyboard is connected via USB-C. Verify you have the correct JSON file for IF99. Re-authorize the device on the VIA website.

8. SPECIFICATIONS

Feature	Detail
Model	IF99
Connectivity	Bluetooth 5.0, 2.4GHz Wireless, USB-C Wired
Keyboard Type	Mechanical
Layout	96% (95 keys)
Switches	Gateron Zero Switch (Linear, Pre-lubed, 5-pin, 45±15gf actuation)
Hot-Swappable	Yes (3-pin/5-pin compatible)
Keycaps	Double-Shot PBT (Cherry profile)
Mounting Style	Gasket Mount (5-layer dampening)
Backlighting	RGB (16.8 million colors, South-facing LEDs)
Programmability	QMK/VIA Compatible
Battery Capacity	8000mAh
Compatible OS	Windows, macOS, Linux, Android
Dimensions	16.89 x 7.91 x 2.8 inches (Package)
Item Weight	0.035 ounces (Keyboard)



Image: Detailed specifications for the Gateron Zero Linear Switch, including type, pre-lubed status, pins, work force, total travel, and a force-travel diagram.

© 2025 YUNZII. All rights reserved.

For further support, please visit the official YUNZII website or contact customer service.