

## Hortensius 5404017915329

# Hortensius Washing Brush with Telescopic Handle User Manual

Model: 5404017915329

## INTRODUCTION

The Hortensius Telescopic Washing Brush with Water Connection is designed for efficient cleaning of hard-to-reach surfaces such as solar systems, glass roofs, and patio roofs. Its versatile design, including a telescopic handle, adjustable angle adapter, and integrated soap dispenser, makes it an ideal tool for various cleaning tasks.



Image: The Hortensus Washing Brush, showcasing its telescopic handle, brush head, and water connection components.

## SETUP AND ASSEMBLY

Follow these steps to assemble your Hortensus Washing Brush and prepare it for use:



# Universal Hose Compatibility

Hassle-Free Connections



Image: Components of the Hortensus Washing Brush, including the telescopic pole, brush head, hose, and OGS connector, illustrating universal hose compatibility.

1. **Attach the Brush Head:** Securely connect the brush head to the end of the telescopic pole. Ensure it clicks into place or is tightened firmly.
2. **Connect the Water Hose:** The brush is equipped with a universal OGS connector. Attach your standard garden hose to this connector. Ensure a tight fit to prevent leaks.
3. **Fill the Soap Dispenser (Optional):** If using the integrated soap dispenser, unscrew its cap, fill with your desired cleaning solution, and reattach it to the water line on the pole.

## OPERATING INSTRUCTIONS

The Hortensus Washing Brush is designed for ease of use and effective cleaning across various surfaces.

### Extending the Telescopic Handle

To reach high areas, extend the telescopic handle up to 4.6 meters (15 feet). Loosen the locking mechanisms



on each section, extend to the desired length, and then tighten the locks to secure the pole firmly.



Image: A person holding the extended telescopic brush, highlighting its ergonomic design and lightweight nature for comfortable use at full length.

### Using the Adjustable Angle Adapter

The brush features an adjustable angle adapter, allowing you to position the brush head for optimal contact with the cleaning surface. Adjust the angle by loosening the pivot joint, setting the desired angle, and then tightening it securely.

# Effortless Cleaning for Solar Panels

 Hortensus

Precise Adjustable  
Angles



4.6m

Image: The brush head with an adjustable angle adapter, demonstrating its ability to pivot up to 90 degrees for precise cleaning of solar panels and other surfaces.

## Utilizing the Integrated Soap Dispenser

The integrated soap dispenser allows for efficient application of cleaning solutions. Once filled, activate the dispenser using the dosing button to release soap directly onto the brush head, ensuring thorough cleaning and radiant results.





# Integrated Soap Dispenser

Clean Faster, Save Time

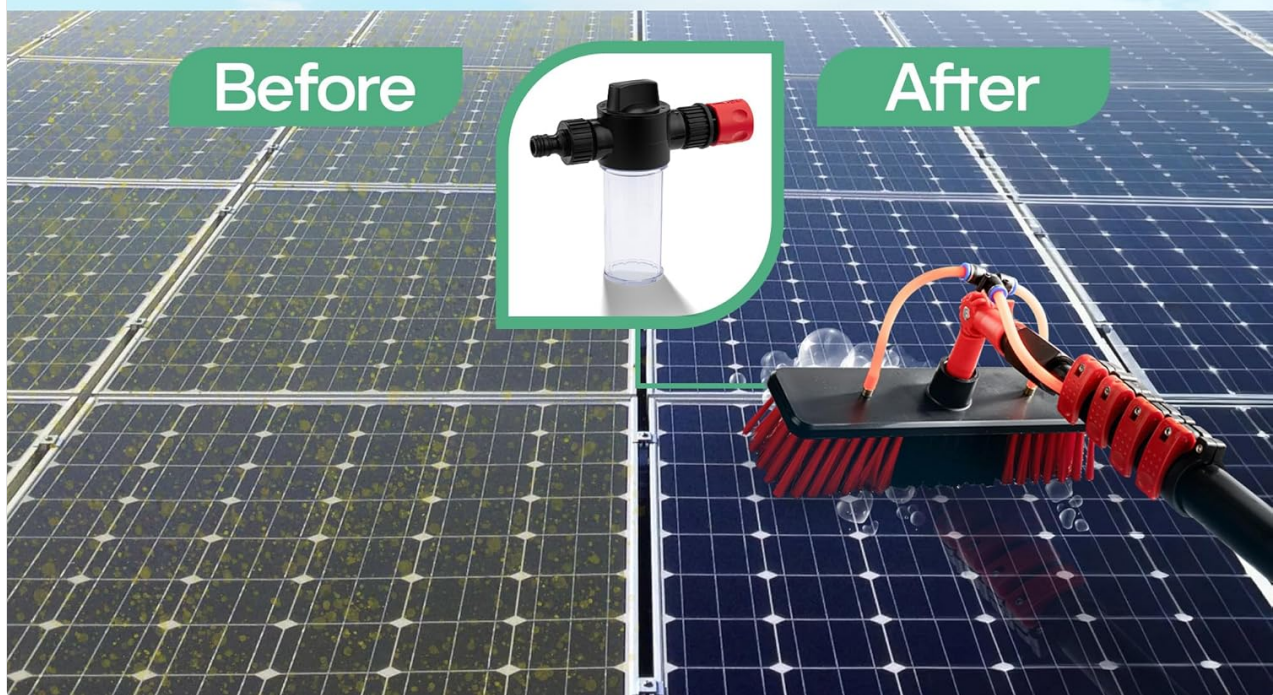


Image: A visual comparison of solar panels before and after cleaning, highlighting the effectiveness of the integrated soap dispenser in achieving clean surfaces.

## Cleaning Applications

This versatile tool is suitable for a wide range of cleaning tasks, including:

- Roofs (glass and patio roofs)
- Facades
- Solar Panels
- Vehicles



# One Tool for All Your Cleaning Needs



Image: A collage demonstrating the Hortensus Washing Brush being used for various cleaning applications, including roofs, facades, solar panels, and vehicles.

## CARE AND MAINTENANCE

Proper care and maintenance will extend the life of your Hortensus Washing Brush:

- **Rinse Thoroughly:** After each use, rinse the brush head and all components with clean water to remove any soap residue or dirt.
- **Empty Soap Dispenser:** If you used the soap dispenser, empty any remaining solution and rinse it out to prevent clogging.
- **Dry and Store:** Allow all parts to air dry completely before disassembling (if desired) and storing in a cool, dry place away from direct sunlight.
- **Inspect Bristles:** Periodically check the bristles for wear or damage. While robust, proper care ensures their longevity.

## TROUBLESHOOTING

If you encounter issues with your washing brush, refer to the following common problems and solutions:

Problem	Possible Cause	Solution
Water leakage from connections	Loose connections or worn O-rings.	Ensure all connections, especially the OGS connector, are tightened securely. Check O-rings for damage and replace if necessary.
Insufficient soap dispensing	Soap dispenser clogged or empty.	Check if the soap dispenser is filled. Clean the dispenser and nozzle to remove any blockages.
Brush not cleaning effectively	Insufficient water flow or incorrect angle.	Ensure adequate water pressure from your hose. Adjust the brush head angle to maximize contact with the surface.
Telescopic handle not locking	Locking mechanisms are not fully engaged.	Ensure each section's locking collar is twisted firmly to secure the pole at the desired length.

## PRODUCT SPECIFICATIONS

Feature	Detail
Brand	Hortensus
Model Number	5404017915329
Colour	Red
Product Dimensions	29 x 10 x 124 cm
Material	Aluminum
Special Features	Swivel Heads, Grip Handle, Extendable, Lightweight, Soap Dispenser
Maximum Extension	4.6 meters (15 feet)
Water Connection	Universal OGS Connector
Manufacturer	Confinity (NV)



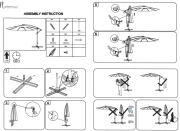
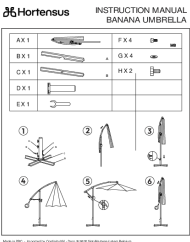
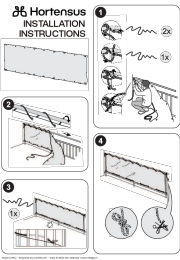
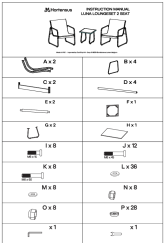
## WARRANTY AND CUSTOMER SUPPORT

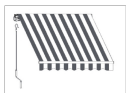


For any questions regarding your Hortensus Washing Brush, including warranty information or technical support, please contact the manufacturer, Confinity (NV), or your point of purchase. Please retain your proof of purchase for any warranty claims.

© 2025 Hortensus. All rights reserved.

## Related Documents - 5404017915329

 <b>INSTRUCTION MANUAL</b> Telescopic waterbrush 4.6m 	<a href="#">Hortensus Telescopic Water Brush 4.6m Instruction Manual</a> Instruction manual for the Hortensus Telescopic Water Brush 4.6m, detailing its features, assembly, and usage for efficient outdoor cleaning.
	<a href="#">Hortensus Cantilever Patio Umbrella Assembly Instructions</a> Step-by-step guide for assembling the Hortensus cantilever patio umbrella, including parts list and safety information.
	<a href="#">Hortensus Banana Umbrella LED Light Instruction Manual</a> Instruction manual for the Hortensus Banana Umbrella LED Light, covering product description, usage, charging, and warnings. Includes multilingual instructions.
	<a href="#">Hortensus Balcony Screen Installation Instructions</a> Step-by-step guide for installing your Hortensus balcony screen, ensuring a secure and aesthetically pleasing setup.
	<a href="#">Hortensus Luna Loungeset 2 Seat Instruction Manual</a> Instruction manual for assembling the Hortensus Luna Loungeset, a 2-seat garden furniture set. Includes parts list and step-by-step assembly instructions.



### [Handleiding voor Hortensius Uitschuifbare Luifel](#)

Deze handleiding biedt gedetailleerde instructies voor de montage, het gebruik en het onderhoud van de Hortensius uitschuifbare luifel. Leer hoe u de hellingshoek aanpast, de luifel veilig bedient en hoe u deze schoonmaakt en opbergt voor een lange levensduur.