

EONON DGRMX7

Eonon Android 14 Car Stereo Navigation DGRMX7 User Manual

Model: DGRMX7 | Brand: EONON

1. INTRODUCTION

This manual provides detailed instructions for the installation, operation, and maintenance of your Eonon Android 14 Car Stereo Navigation system, model DGRMX7. Please read this manual thoroughly before use to ensure proper functionality and to maximize your user experience. This unit is designed to enhance your vehicle's infotainment capabilities with advanced navigation, multimedia, and connectivity features.



2. COMPATIBLE VEHICLES

The Eonon DGRMX7 car stereo is specifically designed for the following vehicle models:

- Dodge RAM 1500/2500/3500 (2013-2018) with **Manual AC**
- Dodge RAM 1500 Classic (2019-2024) with **Manual AC**

Important Note: This car stereo is only suitable for installation in vehicles equipped with manual air conditioning. It is not compatible with models that have automatic air conditioning.

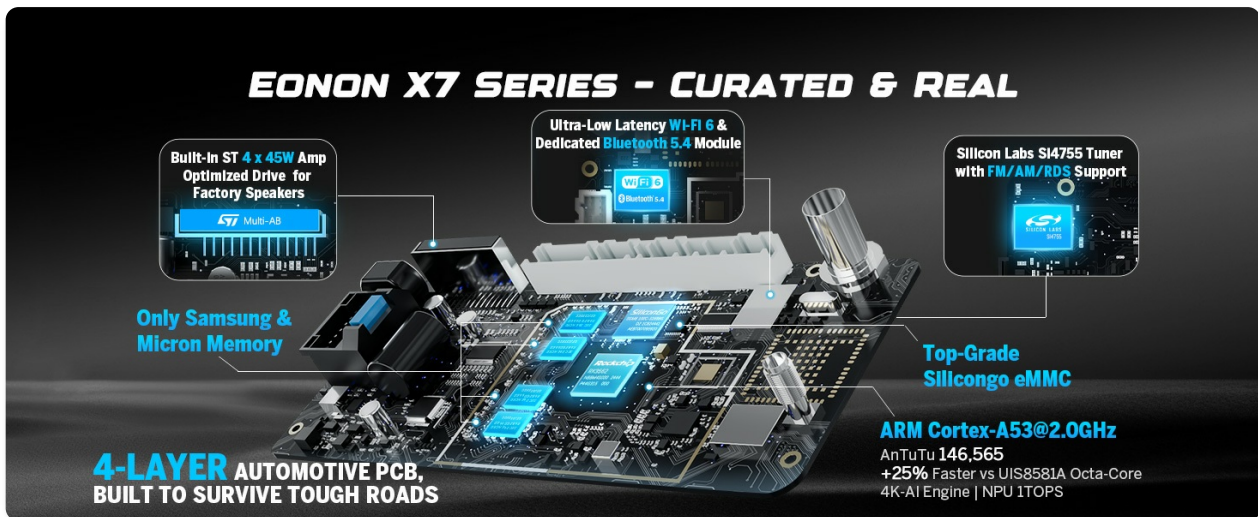


Figure 2.1: Compatible vehicle dashboards with manual AC controls.



Figure 2.2: Incompatible vehicle dashboards with automatic AC controls.

3. WHAT'S IN THE BOX

The following components are included with your Eonon DGRMX7 unit:



Figure 3.1: Contents of the Eonon DGRMX7 package.

- Eonon DGRMX7 Head Unit
- Audio Video Adapter Cables (x2)
- CarPlay & Android Auto USB Adapter Cable (x1)
- USB Adapter Cable (x1)
- Backup Camera Video Input Cable (x1)
- Radio Antenna Adapter Cable (x1)
- Power Cable (x1)
- GPS Antenna (x1)
- External Microphone (x1)
- Speaker (x1)
- USB Adapter Cable (x1)
- CAN Bus (x1)
- Spare Fuse (x1)
- Adhesive Pad (x1)
- User Manual (x1)
- Backup Camera (A0125)

4. SETUP AND INSTALLATION

Installation of the Eonon DGRMX7 unit requires careful attention to wiring and vehicle disassembly. It is recommended to consult a professional if you are unfamiliar with car stereo installations.

4.1. General Installation Steps

1. **Disconnect Battery:** Before starting, disconnect both positive and negative terminals of your vehicle's battery to prevent electrical shorts.
2. **Remove Factory Radio:** Carefully remove the dashboard trim and the existing factory radio unit. Refer to your vehicle's service manual for specific instructions on trim removal.
3. **Connect Wiring Harness:** Connect the provided wiring harness to the vehicle's factory harness. Ensure all connections are secure.
4. **Install Head Unit:** Mount the Eonon DGRMX7 head unit into the dashboard opening. Secure it with screws.
5. **Reconnect Battery:** Once all connections are made and the unit is secured, reconnect the vehicle's

battery.

6. **Test Functionality:** Power on the unit and test all functions, including audio, navigation, Bluetooth, and steering wheel controls.

4.2. Wiring Diagram



Figure 4.1: Eonon DGRMX7 Wiring Diagram.

4.3. Installation Video Guide

For a visual guide on the installation process, please refer to the following video:

Your browser does not support the video tag.

Video 4.1: Installation overview for the Eonon car stereo in a Dodge RAM 1500. This video demonstrates the removal of the stock radio, installation of the new head unit, wiring connections, and testing of features like the backup camera and audio equalizer.

5. OPERATING INSTRUCTIONS

5.1. Basic Operation

- **Power On/Off:** Press and hold the power button on the unit or use the vehicle's ignition.
- **Touchscreen Interface:** The 9-inch IPS HD touchscreen (1280x720 resolution) provides a responsive and clear interface for all functions.
- **Volume Control:** Use the physical buttons or on-screen controls to adjust volume.

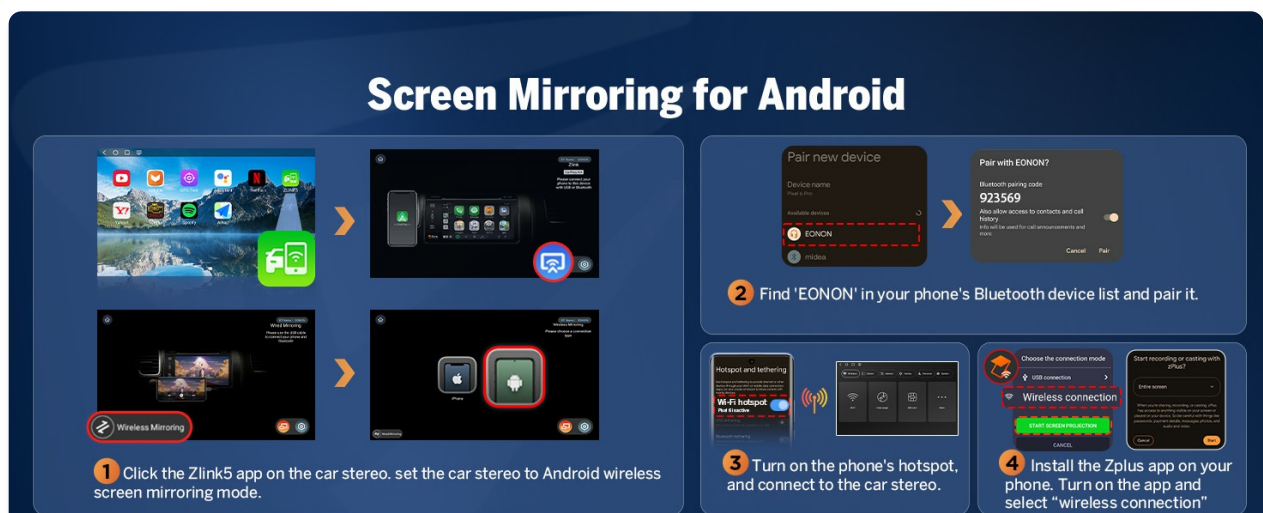


Figure 5.1: 9-inch IPS HD Touchscreen display.

5.2. Smartphone Integration (CarPlay & Android Auto)

The DGRMX7 supports both wireless and wired Apple CarPlay and Android Auto.

5.2.1. Wireless Apple CarPlay Connection

1. Click the Zlink5 app on the car stereo.
2. Turn on Wi-Fi and Bluetooth on your iPhone.
3. Find 'EONON' in your phone's Bluetooth device list and pair it.
4. Once connected, tap 'Use CarPlay' and wait a few seconds for the connection to complete.



Figure 5.2: Wireless Apple CarPlay connection steps.

5.2.2. Wireless Android Auto Connection

1. Click the Zlink5 app on the car stereo.
2. Turn on Wi-Fi and Bluetooth on your Android phone.
3. Find 'EONON' in your phone's Bluetooth device list and pair it.
4. Wait a few seconds for the connection to complete.

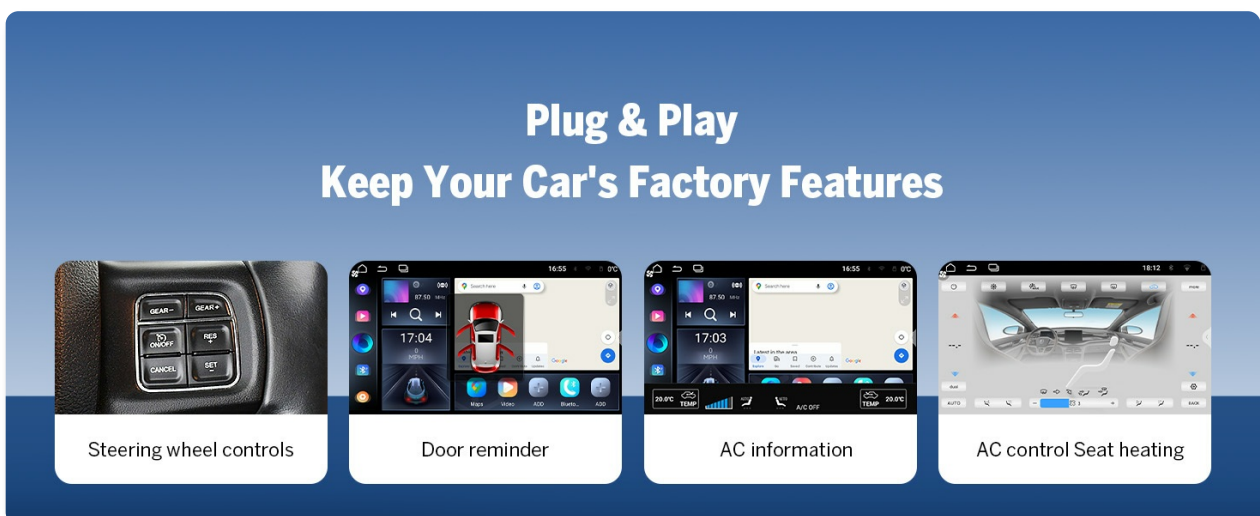


Figure 5.3: Wireless Android Auto connection steps.

5.3. Screen Mirroring

Project your phone's screen onto the car stereo display.

5.3.1. Screen Mirroring for iOS

1. Click the Zlink5 app on the car stereo. Set the car stereo to iPhone wireless screen mirroring mode.
2. Turn on the iPhone hotspot and connect to the car stereo.
3. Turn on the iPhone screen mirroring function and select "zj-airplay".



Figure 5.4: iOS Screen Mirroring steps.

5.3.2. Screen Mirroring for Android

1. Click the Zlink5 app on the car stereo. Set the car stereo to Android wireless screen mirroring mode.
2. Turn on your phone's hotspot and connect to the car stereo.
3. Install the Zplus app on your phone. Turn on the app and select "wireless connection".



Figure 5.5: Android Screen Mirroring steps.

5.4. Audio Settings and Equalizer

The unit features a professional 32-bit DSP with FFT Acceleration and a 48-band EQ with 3D Surround & Virtual Bass for optimized sound. You can customize audio profiles to your preference.

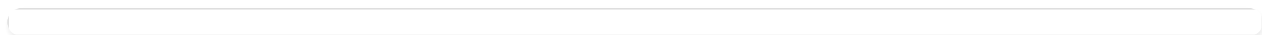


Figure 5.6: Audio Equalizer interface with preset modes.

5.5. Navigation

The unit supports both online and offline GPS navigation. You can use pre-installed maps or download your

preferred navigation apps from the Google Play Store.

5.6. Bluetooth Connectivity

Equipped with an independent Bluetooth module and an extra Bluetooth antenna, the DGRMX7 offers quick and stable connections, noise reduction, crystal-clear call quality, and high-quality music streaming via Bluetooth 5.4.

- **Hands-free Calls:** Make and receive calls directly from the stereo.
- **Contact Synchronization:** Sync your phone's contacts for easy access.
- **Music Playback:** Stream audio from your Bluetooth-enabled device.

Figure 5.7: Bluetooth connectivity features.

5.7. Radio

The unit includes a high-quality FM/AM radio with RDS support.

5.8. Customization

Personalize your stereo's appearance and functionality:

- **UI Themes:** Choose from 3 customizable UI themes.
- **Boot Logo:** Customize the startup logo.
- **Button Color:** Adjust the color of the physical buttons.
- **Wallpaper:** Set custom wallpapers.

Compatible Vehicles

2013-2018 Dodge RAM 1500/2500/3500 (manual AC)
2019-2024 Dodge RAM 1500 Classic (manual AC)



Note: This car stereo can only be installed in cars that come with manual air conditioning.

Figure 5.8: Customization options for the user interface.

5.9. Retained OEM Features

The DGRMX7 is designed for plug-and-play installation, retaining several factory features of your Dodge RAM:

- Steering Wheel Controls
- Door Information Display
- Driving Data Display
- AC Information Display

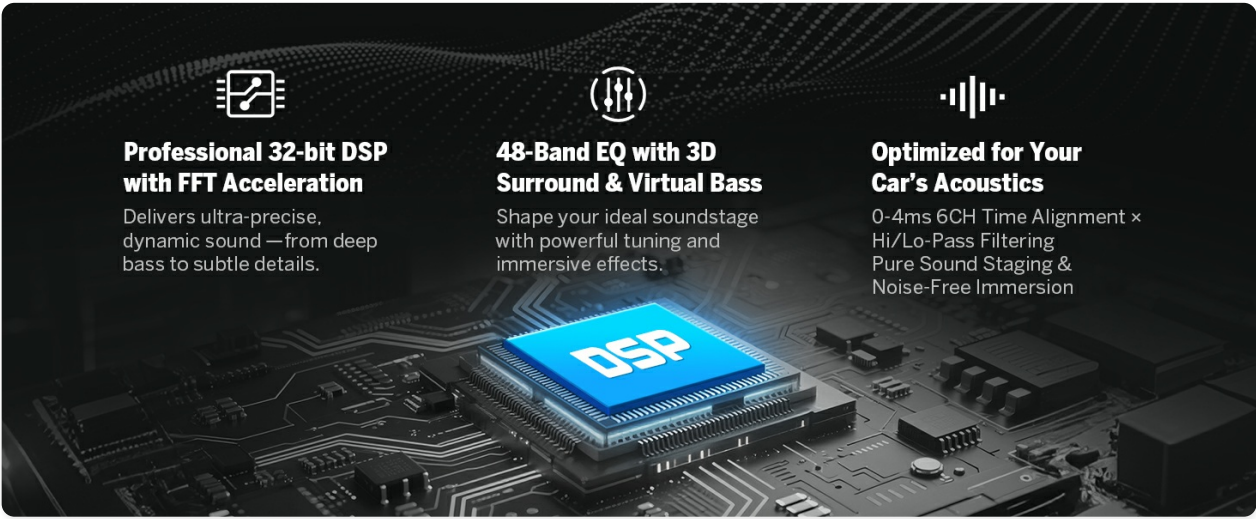


Figure 5.9: Retained factory features.

6. MAINTENANCE

6.1. Software Updates (OTA)

The Eonon DGRMX7 supports Over-The-Air (OTA) firmware updates. These updates help fix software issues and enhance security, ensuring your head unit remains up-to-date. Updates are for software improvements and do not upgrade the Android system version.



Figure 6.1: Over-The-Air (OTA) Firmware Update process.

7. TROUBLESHOOTING

- **No Power:** Ensure all power cables are securely connected and the vehicle's battery is properly reconnected. Check the fuse.
- **No Sound:** Verify speaker connections and audio settings. Check the equalizer settings.
- **Backup Camera 'No Signal':** If your vehicle has a factory backup camera and you see 'no signal' when in reverse, you may need to sync it with the new unit. While in reverse and the 'no signal' message is displayed, press and hold your finger on the screen until a new smaller screen appears. This interface allows you to pair the rear camera. Remember to save any changes.
- **Bluetooth Connectivity Issues:** Ensure Bluetooth is enabled on both the stereo and your phone. Try unpairing and re-pairing the devices.
- **GPS Signal Loss:** Ensure the GPS antenna is properly installed and has a clear line of sight to the sky.

8. SPECIFICATIONS

Feature	Specification
Operating System	Android 14
Processor	Rockchip (High performance, low power consumption)
RAM	3GB




Feature	Specification
ROM (Internal Storage)	32GB
Display Size	9 Inches
Display Type	IPS HD Touchscreen
Resolution	1280x720
CarPlay & Android Auto	Wireless/Wired
Bluetooth Version	5.4
Wi-Fi Connectivity	Yes (5GHz support)
GPS	Online/Offline Navigation (Worldwide map type)
Radio	FM/AM with RDS
Audio Output Power	ST 4 x 45W Amp
DSP	Professional 32-bit with FFT Acceleration
Equalizer	48-Band EQ with 3D Surround & Virtual Bass
USB Ports	3
Backup Camera Support	720P AHD (A0125 included)
Dashcam Support	Eonon A100 (not included)
OBD2 Support	V0056 (not included)
Item Weight	5.1 pounds (2.32 Kilograms)
Package Dimensions	13.62 x 12.52 x 6.65 inches

9. WARRANTY AND SUPPORT

The Eonon DGRMX7 comes with a**2-Year Manufacturer Warranty**. For technical support, troubleshooting assistance, or warranty claims, please contact Eonon customer service through their official website or the retailer where the product was purchased.

Additional protection plans are available for purchase:

- 2-Year Protection Plan
- 3-Year Protection Plan
- Complete Protect (monthly subscription)

	<p>Eonon VWA12S User Manual: Features, Installation, and Operation Guide</p> <p>Comprehensive user manual for the Eonon VWA12S car infotainment system. Covers product overview, features like Wireless CarPlay and Android Auto, GPS navigation, Bluetooth, settings, and troubleshooting for your Eonon VWA12S car stereo.</p>
	<p>Eonon Q49PRO User Manual</p> <p>User manual for the Eonon Q49PRO car stereo, covering installation, features, settings, and troubleshooting.</p>
	<p>Eonon Android Car Stereo User Manual - Navigation, Bluetooth, Media, and More</p> <p>Comprehensive user manual for Eonon Android car stereos, covering setup, navigation, Bluetooth connectivity, media playback, app installation, CarPlay, Android Auto, and system settings.</p>
	<p>BMW 3 Series (E90/E91/E92/E93) 2005-2011 Eonon Head Unit Installation Manual</p> <p>Comprehensive installation manual for Eonon car stereo head units in BMW 3 Series (E90, E91, E92, E93) models manufactured between 2005 and 2011. This guide provides detailed, step-by-step instructions for removing the factory radio and air conditioning controls, wiring the new unit, and fitting it into the dashboard. It covers essential steps such as checking console compatibility, using specialized tools, connecting harnesses, and testing features.</p>
	<p>Eonon Q63Pro Installation Manual for Mazda 3 (2010-2013)</p> <p>Detailed installation guide for the Eonon Q63Pro 9-inch Android 10 car stereo head unit in Mazda 3 vehicles (2010-2013). Covers GPS, CarPlay, Android Auto, DSP, Bluetooth, and more.</p>
	<p>Eonon X20 User Manual: Car Stereo Installation, Features, and Troubleshooting</p> <p>Comprehensive user manual for the Eonon X20 car stereo. Learn about installation, features like Android Auto, CarPlay, Bluetooth, USB/SD playback, settings, and troubleshooting tips.</p>