

Manuals+

[Q & A](#) | [Deep Search](#) | [Upload](#)

[manuals.plus](#) /

› [LAGENIO](#) /

› [LAGENIO K3 4G Kids Smartwatch User Manual](#)

LAGENIO K3

LAGENIO K3 4G Kids Smartwatch User Manual

INTRODUCTION

Welcome to the LAGENIO K3 4G Kids Smartwatch. This manual provides essential information for setting up, operating, and maintaining your device. The LAGENIO K3 is designed to keep children connected and safe with features like 4G communication, GPS tracking, and parental controls.



Image: Two LAGENIO K3 smartwatches, one in purple showing a GPS location interface and another in pink displaying an active video call.

GETTING STARTED

Package Contents

- LAGENIO K3 Smartwatch
- Magnetic Charging Cable
- User Manual
- Interchangeable Straps (e.g., pink and purple)

SIM Card Installation

The LAGENIO K3 Smartwatch requires a Nano SIM card for 4G connectivity, calls, and GPS tracking. Compatible carriers include Vodafone, Telekom, and Telefonica. Ensure the SIM card has an active data plan for optimal performance.

1. Power off the smartwatch.
2. Carefully remove the watch strap and the back cover to access the SIM card slot.
3. Insert a Nano SIM card with the chip facing up and the cut corner oriented correctly.
4. Ensure the SIM card is securely seated.
5. Replace the back cover and strap.
6. Power on the smartwatch.

App Installation and Pairing

To manage the smartwatch and access all features, download the official LAGENIO app on your smartphone.

1. Scan the QR code provided in the watch packaging or search for "LAGENIO" in your smartphone's app store (iOS or Android).
2. Install and open the app.
3. Register a new account or log in if you already have one.
4. In the app, select "Add Device" and scan the QR code displayed on the smartwatch screen or enter the device ID manually.
5. Follow the on-screen prompts to complete the pairing process.

Once paired, you can configure contacts, set safe zones, and manage other watch settings from your smartphone.

OPERATING INSTRUCTIONS

Communication Features

The smartwatch supports various communication methods to keep your child connected.

3 Ways to Communicate

Make communication more convenient and keep close contact with your children at all times



Image: The LAGENIO K3 Smartwatch interface displaying options for video calls, standard phone calls, and voice messages, illustrating the three primary communication methods available.

Voice Calls

Your child can make and receive calls from pre-approved contacts. Parents can manage the contact list through the LAGENIO app.

Video Calls

The 4G network enables smooth HD video calls between the smartwatch and the parent's smartphone app.

Messaging

Send and receive voice messages or pre-set text messages between the watch and the app.

Location Tracking and Safety Features

The LAGENIO K3 uses 4G, Wi-Fi, GPS, and LBS for real-time location tracking.

4G+GPS+WIFI+LBS

Set safe zones with automatic alerts
for boundary crossing, ensuring peace of mind

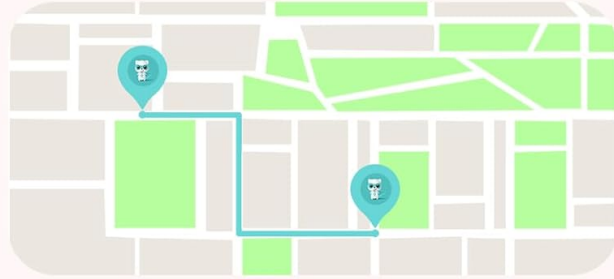
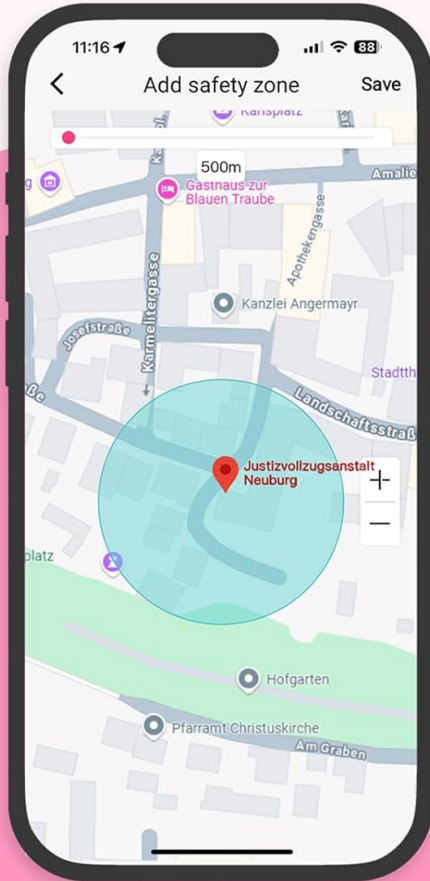


Image: A map interface on a smartphone showing a designated safe zone, alongside the LAGENIO K3 Smartwatch and icons representing GPS location, safe zones, history tracking, and step counting.

Real-time Location

View your child's current location and movement history through the LAGENIO app. Location accuracy depends on SIM signal strength and network compatibility.

Safe Zones (Geofencing)

Set up virtual safe zones in the app. You will receive alerts if your child enters or exits these designated areas.

SOS Function

In an emergency, your child can press and hold the SOS button on the watch. This will automatically call pre-set emergency contacts and send their location.

School Mode

Classroom Mode

School Mode helps your children pause calls and messages to avoid unnecessary interruptions.



Image: Two children studying with a LAGENIO K3 Smartwatch in the foreground, displaying "Class is off-Limits" and the time, indicating the activation of School Mode to prevent distractions.

Parents can set specific times and days for School Mode via the app. During this mode, the watch will only display the time, blocking calls and messages to minimize distractions during class.

Other Features

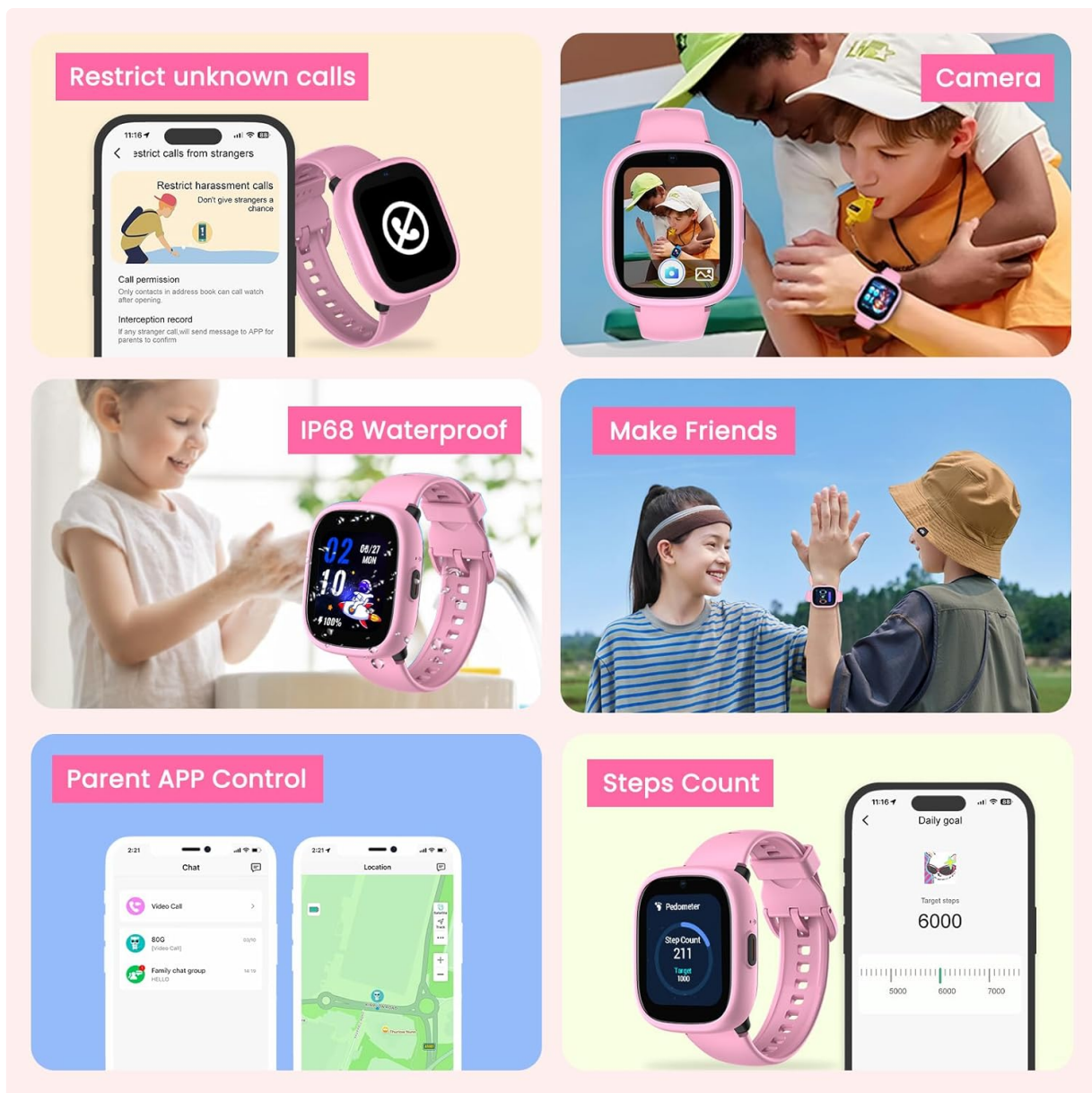


Image: A collage showcasing various features of the LAGENIO K3 Smartwatch, including the ability to restrict unknown calls, a built-in camera, IP68 waterproofing, a 'Make Friends' function, comprehensive parent control via an app, and a step counter.

Camera

The watch includes a camera for taking photos. Parents can also remotely activate the camera via the app.

Pedometer (Steps Count)

The smartwatch tracks daily steps, encouraging physical activity.

Call Blocker

Configure the watch to block calls from unknown numbers, ensuring only approved contacts can reach your child.

CARE AND MAINTENANCE

Charging

Charge the smartwatch using the provided magnetic charging cable. Connect the USB-A end to a compatible power adapter (not included). A full charge typically lasts less than 24 hours with active use.

Water Resistance (IP68)

The LAGENIO K3 Smartwatch is IP68 water-resistant, protecting it from rain and splashes during handwashing. It is **not suitable for swimming or prolonged immersion in water**

Cleaning

Wipe the watch and straps with a soft, damp cloth. Avoid using harsh chemicals or abrasive materials.

TROUBLESHOOTING COMMON ISSUES

Connectivity Problems

If experiencing connection issues (calls, data, GPS), ensure the Nano SIM card is correctly inserted and has an active data plan. Verify network coverage in your area. Contact your SIM card provider or LAGENIO support for assistance.

Inaccurate GPS Location

GPS accuracy can vary based on signal strength, network compatibility, and environmental factors. For best results, use recommended SIM card operators. Update the location manually via the app for the most current position.

Short Battery Life

Active features like 4G calls, video calls, and frequent GPS updates consume more battery. Reduce usage of these features or adjust settings in the app to extend battery life. Daily charging is recommended.

Watch Not Powering On

Ensure the watch is fully charged. If it still doesn't power on, try a different charging cable or power adapter.


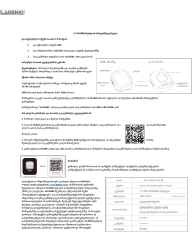



PRODUCT SPECIFICATIONS

Feature	Detail
Brand	LAGENIO
Model	K3
Screen Size	1.7 inches
Connectivity Technology	4G Cellular, Wi-Fi
Location Technology	GPS, LBS
Compatible Devices	Smartphones (iOS and Android)
SIM Card Type	Nano SIM
Battery Composition	Lithium-polymer
Memory Storage Capacity	128 MB
Water Resistance Level	IP68 (Splash and rain resistant, not for swimming)
Band Material Type	Silicone or Rubber
Included Components	Data Cable, User Manual

SUPPORT AND CONTACT INFORMATION

For further assistance, technical support, or inquiries regarding your LAGENIO K3 Smartwatch, please refer to the contact information provided with your purchase or visit the official LAGENIO website.

Related Documents - K3

	<p>LAGENIO K9 Smartwatch User Manual - XKiDS</p> <p>Official user manual for the LAGENIO K9 Smartwatch by XKiDS. Learn how to set up, use features like calls, SMS, camera, GPS, and Wi-Fi, and view technical specifications.</p>
	<p>LAGENIO K3 Kids Smartwatch User Manual</p> <p>Comprehensive user manual for the LAGENIO K3 kids smartwatch, covering setup, SIM card installation, app connection, charging, and technical specifications. Learn how to activate your device and get started.</p>
	<p>LAGENIO K10 Kids Smartwatch User Manual - Setup and Specifications</p> <p>Detailed user manual for the LAGENIO K10 kids smartwatch, covering SIM card activation, device setup, charging, and technical specifications. Learn how to connect your watch to the LAGENIO app.</p>
	<p>LAGENIO K9 Smartwatch User Manual</p> <p>User manual for the LAGENIO K9 smartwatch. This guide details SIM card setup, app installation and connection, charging instructions, and technical specifications. Learn how to activate and use your LAGENIO K9 device. Visit www.lagenio.com for support.</p>
	<p>LAGENIO K9 Kids Watch User Manual</p> <p>User manual for the LAGENIO K9 Kids Watch, detailing setup, SIM card installation, app usage, and features like video calls and GPS positioning.</p>

WATCH
OPERATING GUIDE

[Lagenio G30 Smartwatch Operating Guide](#)

Comprehensive operating guide for the Shenzhen Lagenio Technology Co., Ltd G30 smartwatch, detailing features like health monitoring, connectivity, and app integration.