

Longriver MX08

Longriver Tem8(R7Pro) Shower Filter with Wireless Temperature Display User Manual

Model: MX08

1. INTRODUCTION

This manual provides comprehensive instructions for the installation, operation, maintenance, and troubleshooting of your Longriver Tem8(R7Pro) Shower Filter with Wireless Temperature Display. Please read this manual thoroughly before use to ensure proper function and longevity of the product. Retain this manual for future reference.

2. PRODUCT OVERVIEW

The Longriver Tem8(R7Pro) is a 2-in-1 shower filter system designed to improve water quality and provide real-time temperature monitoring. It features advanced filtration and a wireless temperature display for enhanced showering comfort and safety.

- **Hydroelectric Power:** The filter incorporates a micro hydroelectric generator that powers the wireless temperature display, eliminating the need for external power sources for the filter unit.
- **Advanced Filtration:** The R7Pro model effectively removes up to 99.99% of chlorine and heavy metals from your shower water, contributing to healthier skin and hair.
- **Wireless Temperature Display:** An external display unit shows the current water temperature in real-time (response time of 0.25 seconds), preventing water from being too hot or too cold.
- **Consistent Water Pressure:** The design ensures that the installation of this filter does not negatively impact your bathroom's water pressure.
- **Easy Installation:** Designed for quick and tool-free setup with standard 1/2 inch ports.



Figure 2.1: The Longriver Tem8(R7Pro) Shower Filter and its Wireless Temperature Display.

Longriver

Say Goodbye to Skin and Hair Troubles



Soothes Dry, Itchy Skin

Removes chlorine, impurities, and skin offenders.



Boosts Hair Health

Prevents damage, thinning, and dullness.



Enhanced Shower Experience

High water pressure with superior filtration.



Figure 2.2: Diagram illustrating the multi-stage filtration layers designed to improve water quality for skin and hair health.

3. SAFETY INFORMATION

- Ensure all connections are tight to prevent leaks.
- Do not expose the wireless temperature display to direct water spray for extended periods, as it is designed for splash resistance, not submersion.
- Keep the product out of reach of children.
- Do not attempt to disassemble or repair the unit yourself. Contact customer service for assistance.
- Use only genuine replacement filter cartridges to ensure optimal performance and avoid damage.

4. PACKAGE CONTENTS

Verify that all components are present in your package:

- Tem8(R7Pro) Shower Filter Unit
- Wireless Temperature Display Screen
- Mounting Plate for Display (with 3M adhesive tape)
- User Manual (this document)

5. INSTALLATION GUIDE

The Tem8(R7Pro) shower filter is designed for easy, tool-free installation. Follow these steps:

5.1. Shower Filter Installation

1. Remove your existing showerhead from the shower arm.
2. Screw the Tem8(R7Pro) shower filter onto the shower arm. Ensure the connection is hand-tight.
3. Screw your showerhead onto the bottom of the Tem8(R7Pro) shower filter. Ensure this connection is also hand-tight.
4. Verify that the water inlet and outlet directions on the filter are correct. Incorrect connection will prevent proper function.

5.2. Wireless Temperature Display Installation

1. Remove the mounting plate from the back of the wireless display unit.
2. Peel off the protective film from the 3M adhesive tape on the back of the mounting plate.
3. Attach the mounting plate to a clean, dry wall surface near your shower, within 6.56 feet (2 meters) of the filter unit for optimal signal reception.
4. Press the power button on the back of the display unit to activate it.
5. Insert the display screen into the hook plate from top to bottom.

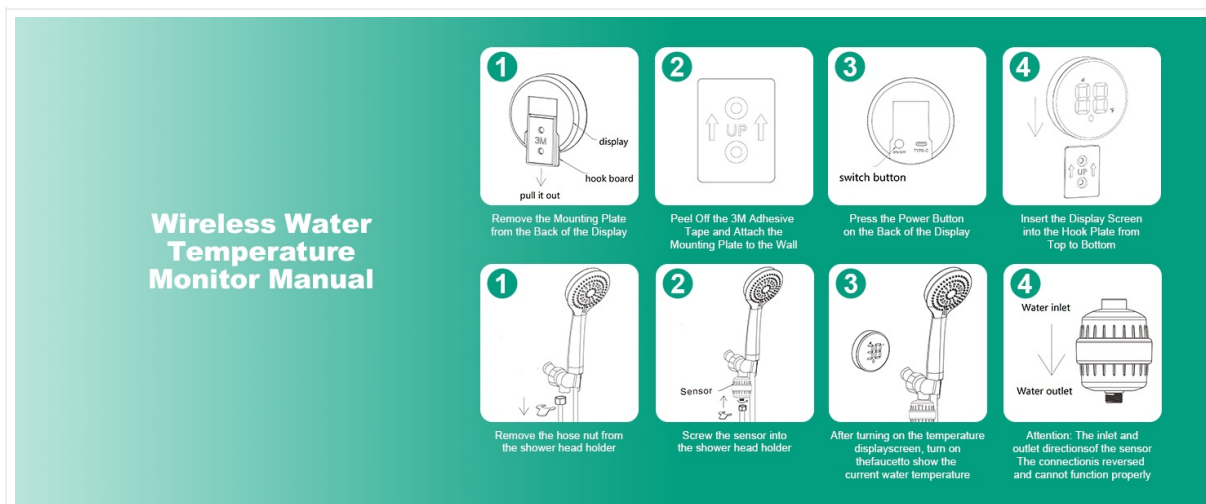


Figure 5.1: Step-by-step installation guide for the shower filter and wireless temperature display.

FITS TOTAL SHOWER HEAD TYPES

Longriver



Figure 5.2: The filter is compatible with rain showers, fixed showers, and handheld showers, featuring standard G1/2 inch ports.

6. OPERATING INSTRUCTIONS

Once installed, the Tem8(R7Pro) system operates automatically when water flows through the filter.

6.1. Real-time Temperature Display

The wireless display unit will show the water temperature in Fahrenheit (°F) as soon as water begins to flow. The display updates rapidly, typically within 0.25 seconds.

- **Blue Light:** Indicates water temperature is below 86°F (too low).
- **Green Light:** Indicates water temperature is between 86°F and 104°F (suitable).
- **Red Light:** Indicates water temperature is above 104°F (too high).

The temperature sensing range is 0°F to 188°F.

Real-time Monitoring of Water Temperature



Figure 6.1: The wireless display provides real-time temperature readings with color indicators for easy temperature assessment.

Setting The Most Suitable Bathing Temperature for Family Members

Longriver
see what Longriver can do

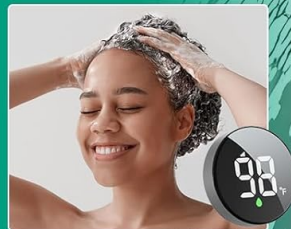


Figure 6.2: The temperature display assists in setting appropriate water temperatures for various users, such as pets (102°F), babies (95°F), and adults (98°F).

7. MAINTENANCE

7.1. Filter Cartridge Replacement

The filter cartridge should be replaced regularly to maintain optimal filtration performance. The recommended replacement interval is every 3 months, or after approximately 250 baths or 500 showers, depending on water quality and usage.

1. Turn off the water supply to your shower.
2. Unscrew the shower filter unit from the shower arm.
3. Carefully separate the two halves of the filter housing.
4. Remove the old filter cartridge and dispose of it responsibly.
5. Insert a new, genuine Longriver replacement cartridge into the filter housing, ensuring it is seated correctly.
6. Reassemble the filter housing, ensuring a tight seal.
7. Screw the filter unit back onto the shower arm, then reattach your showerhead.
8. Turn on the water supply and check for leaks. Flush the filter with cold water for a few minutes before use.



Figure 7.1: Cutaway view of the shower filter, illustrating the internal cartridge that requires periodic replacement.

8. TROUBLESHOOTING

Problem	Possible Cause	Solution
No temperature displayed / Display flickering	Low battery in display unit; Display out of signal range; Sensor malfunction.	Ensure the display unit is within 6.56 feet (2 meters) of the filter. Check if the display unit needs charging (if applicable, though hydroelectric power is for the filter, the display might have its own battery). Contact customer support if the issue persists.
Water leakage from connections	Loose connections; Missing or damaged rubber washers.	Ensure all connections are hand-tight. Check that rubber washers are properly seated and not damaged. Do not overtighten.
Reduced water pressure	Clogged filter cartridge; Incorrect installation.	Replace the filter cartridge if it's due for replacement. Recheck installation steps to ensure correct assembly.
Filter unit appears cracked or damaged	Physical impact; Overtightening during installation.	Discontinue use immediately. Contact customer service for a replacement. Avoid overtightening during installation.

9. SPECIFICATIONS

-
- **Model Number:** MX08
 - **Manufacturer:** Foshan Microcore Electronics Technology Co.Ltd
 - **Item Weight:** 1.28 pounds
 - **Product Dimensions:** 6.1 x 4.1 x 5.91 inches
 - **Color:** Black
 - **Batteries:** 1 Lithium Polymer battery required (included for display)
 - **Included Components:** Showerhead Filter, Wireless Temperature Display Screen
 - **Connection Type:** Standard 1/2 inch port
 - **Temperature Sensing Range:** 0°F to 188°F
 - **Temperature Response Speed:** 0.25 seconds

10. CUSTOMER SUPPORT

For any questions, concerns, or assistance with your Longriver Tem8(R7Pro) Shower Filter, please contact our customer service team. We offer 24/7 online customer service to address any issues you may encounter. Please refer to your product packaging or the retailer's website for specific contact details.