

Strex SP311

Strex Powerful Carpet Cleaner - User Manual

Model: SP311

1. INTRODUCTION

Thank you for choosing the Strex All-in-1 Stain Remover. This powerful and versatile cleaning device is designed to effectively remove stubborn stains from various surfaces, including carpets, furniture, mattresses, and car upholstery. With its 450W motor and 11,000 kPa suction power, combined with a hygienic dual-tank system, you can achieve a truly fresh and clean result.

Please read this manual carefully before first use to ensure safe and optimal operation of your Strex Carpet Cleaner.

2. PRODUCT OVERVIEW

The Strex All-in-1 Stain Remover comes with essential components for effective cleaning.



Figure 2.1: Strex Carpet Cleaner with its main components and two cleaning attachments.

The device features a compact design with a main unit, a flexible hose, and two interchangeable cleaning heads. It is equipped with separate tanks for clean and dirty water, ensuring hygienic operation.



IN DE DOOS



● Strex Vlekkenreiniger met opzetstukken



● Verpakking



● Handleiding

Figure 2.2: What's included in the box: The Strex Carpet Cleaner, two cleaning attachments, product packaging, and the user manual.

3. SETUP

1. **Unpack the Device:** Carefully remove all components from the packaging. Ensure all parts listed in the 'Product Overview' section are present.
2. **Fill the Clean Water Tank:** Locate the clean water tank (typically marked or clear). Fill it with clean water. For enhanced cleaning, you may add a suitable, non-foaming cleaning solution according to the solution's instructions. Do not overfill.
3. **Attach the Desired Cleaning Head:** The Strex Carpet Cleaner comes with two cleaning heads: a large brush for bigger, flat surfaces like carpets and rugs, and a smaller head for stubborn stains in hard-to-reach areas or on smaller furniture. Select the appropriate head and securely attach it to the hose nozzle.
4. **Connect to Power:** Plug the power cord into a suitable electrical outlet. The extra-long 5-meter cord and 1.5-

meter hose provide a total reach of 6.5 meters for flexibility.



Figure 3.1: The hygienic dual-tank system, showing the 1000ml clean water tank and 850ml dirty water tank.

4. OPERATING INSTRUCTIONS

The Strex All-in-1 Stain Remover is designed for straightforward and effective cleaning.

1. **Prepare the Area:** Before cleaning, remove any loose debris or solid particles from the stained area.
2. **Power On:** Turn on the device using the power button.
3. **Spray the Stain:** Hold the cleaning head over the stain. Press the spray trigger to apply the water/cleaning solution mixture onto the stained area.
4. **Scrub:** Use the integrated brush on the cleaning head to gently scrub the stain. The powerful 450W motor and 11,000 kPa suction ensure deep cleaning.
5. **Vacuum/Extract:** Release the spray trigger and continue to move the cleaning head over the treated area to

vacuum up the dirty water. The dual-tank system keeps clean and dirty water separate.

6. **Repeat if Necessary:** For stubborn stains, you may need to repeat the spray, scrub, and vacuum process until the stain is removed.
7. **Suitable Surfaces:** This device is suitable for various surfaces including carpets, rugs, furniture upholstery, car upholstery, and stairs.

INTENSIEVE REINIGING

Door de sterke motor met
dual-brush technologie worden
zelfs de meest hardnekkige
vlekken verwijderd



450W
Krachtige motor



Figure 4.1: Demonstrating intensive cleaning on a carpet, highlighting the powerful 450W motor.

DIRECT RESULTAAT

Vlekkeloos binnen enkele seconde



Vloerkleden



Autostoel

Figure 4.2: Direct results showing the effectiveness of the cleaner on both carpets and car seats.



Meubels



Vloerkleden



Auto

GESCHIKT VOOR ALLE OPPERVlakken

Ideaal om te gebruiken voor je bank, vloerkleed, in de auto en nog veel meer!

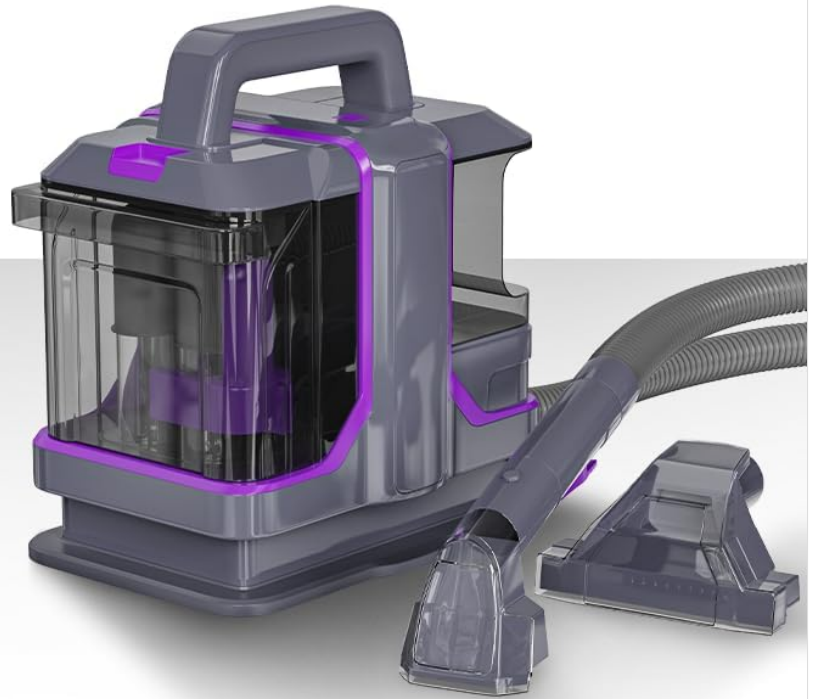


Figure 4.3: The Strex Carpet Cleaner is suitable for a wide range of surfaces including furniture, carpets, and car interiors.

5. MAINTENANCE

Proper maintenance ensures the longevity and optimal performance of your Strex Carpet Cleaner.

1. **Empty and Rinse Tanks:** After each use, empty the dirty water tank and rinse both the clean and dirty water tanks thoroughly with clean water.
2. **Self-Cleaning Function:** The device features a self-cleaning function for the hose. Press the designated button (refer to device markings) to automatically flush the hose clean. This prepares the device for its next use.
3. **Clean Attachments:** Detach and rinse the cleaning heads under running water to remove any residue.
4. **Storage:** Store the device in a cool, dry place, away from direct sunlight and extreme temperatures. Ensure all tanks are empty and dry before storage.

6. TROUBLESHOOTING

If you encounter any issues with your Strex Carpet Cleaner, please refer to the following common troubleshooting steps:

Problem	Possible Cause	Solution
No power	Device not plugged in; Power outlet malfunction	Ensure power cord is securely plugged in; Test outlet with another device.
No spray	Clean water tank empty; Spray nozzle clogged	Refill clean water tank; Clean spray nozzle.
Low suction	Dirty water tank full; Hose/nozzle clogged; Tank not properly sealed	Empty dirty water tank; Clear any blockages in hose/nozzle; Ensure tanks are securely latched.
Leaking	Tanks not properly seated; Damaged seals	Ensure tanks are correctly installed and latched; Check seals for damage.

If the problem persists after following these steps, please contact Strex customer support for further assistance.

7. SPECIFICATIONS

Product Type	Stain Remover / Carpet Cleaner
Brand	Strex
Model Number	SP311
Suitable For	Carpets, floors, furniture, car upholstery, and more
Materials	High-quality ABS and PP
Motor Power	450W
Suction Power	11,000 kPa
Included Attachments	Two cleaning heads (small and large)
Clean Water Tank Capacity	1000 ml
Dirty Water Tank Capacity	850 ml
Cord Length	5 m
Hose Length	1.5 m
Total Reach	6.5 m
Color	Grey / Purple
Weight	4.2 kg

Dimensions (L x W x H)

32 x 24 x 35 cm

PERFECT FORMAAT

Compact &
krachtig ontwerp



Compact ontwerp

Snel en makkelijk op
te bergen

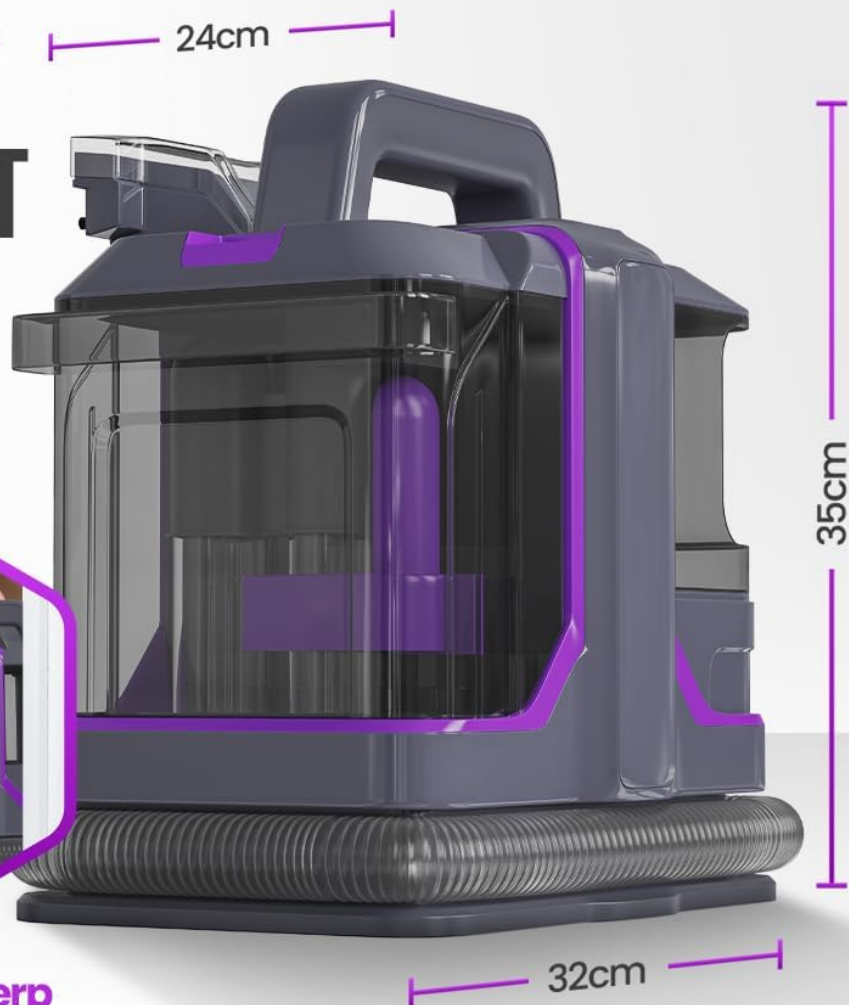


Figure 7.1: Compact dimensions of the Strex Carpet Cleaner, making it easy to store and carry.

6.5 METER REIKWIJDTE EXTRA LANG STROOMSNOER

Voor de ultieme flexibiliteit









Figure 7.2: Extended reach provided by the 5-meter power cord and 1.5-meter hose.

8. WARRANTY AND SUPPORT

For warranty information, please refer to the documentation provided with your purchase or visit the official Strex website. For technical support, troubleshooting beyond this manual, or spare parts, please contact Strex customer service through their official channels.

Keep your purchase receipt as proof of purchase for any warranty claims.

Related Documents - SP311

<div><div>STREX</div><div>FABRIC SHAVER</div><div>User manual SP277</div><div></div><div><div>English</div><div>Nederlands</div></div></div>	<div>STREX FABRIC SHAVER SP277 User Manual</div> <div>User manual for the STREX FABRIC SHAVER, model SP277. Provides essential instructions for safe and correct operation of the fabric shaver. Contact Strex for support.</div>
<div><div>STREX</div><div>WIRELESS DOORBELL</div><div>User manual SP112</div><div></div><div><div>English</div><div>Nederlands</div></div></div>	<div>STREX Draadloze Deurbel SP112 Handleiding</div> <div>Gedetailleerde gebruikershandleiding voor de STREX Draadloze Deurbel SP112. Bevat installatie-instructies, veiligheidsrichtlijnen, technische specificaties en probleemoplossing.</div>
<div><div>STREX</div><div>CORDLESS VACUUM CLEANER</div><div>User manual SP260</div><div></div><div><div>English</div><div>Nederlands</div></div></div>	<div>STREX SP260 Cordless Vacuum Cleaner User Manual</div> <div>Comprehensive user manual for the STREX SP260 Cordless Vacuum Cleaner, covering setup, operation, safety, maintenance, and troubleshooting. Learn how to use your STREX SP260 effectively and safely.</div>
<div><div>STREX</div><div>ACTION CAMERA 5K</div><div>User manual SP304</div><div></div><div><div>English</div><div>Nederlands</div></div></div>	<div>STREX Action Camera 5K SP304 User Manual: Features, Operation, and Safety</div> <div>Comprehensive user manual for the STREX Action Camera 5K (SP304). Learn about its features, operating instructions, technical specifications, and safety guidelines for capturing your adventures.</div>
<div><div>STREX</div><div>LAPTOP COOLING PAD</div><div>INSTRUCTION MANUAL SP163</div><div></div><div><div>English</div><div>Nederlands</div></div></div>	<div>Strex SP163 Laptop Cooling Pad Instruction Manual</div> <div>This manual provides instructions for the Strex SP163 Laptop Cooling Pad, detailing its specifications and usage for laptops sized 12-17 inches. It covers setup, fan operation modes, and contact information for support.</div>
<div><div>STREX</div><div>ACTION CAMERA</div><div>User manual SP257</div><div></div><div><div>English</div><div>Nederlands</div></div></div>	<div>Strex Action Camera SP257 Gebruikershandleiding</div> <div>Gedetailleerde gebruikershandleiding voor de Strex Action Camera SP257. Ontdek hoe u deze compacte, waterdichte camera installeert, bedient en onderhoudt voor sport- en actiemomenten. Bevat technische specificaties, veiligheidsinstructies en garantie-informatie.</div>

