

Manuals.plus /

› URUQ /

› URUQ 25W Submersible Aquarium Heater User Manual

URUQ 25W

URUQ 25W Submersible Aquarium Heater User Manual

Model: 25W

1. INTRODUCTION

Thank you for choosing the URUQ 25W Submersible Aquarium Heater. This manual provides essential information for the safe and efficient operation of your new aquarium heater. Please read these instructions carefully before installation and use, and retain them for future reference.

2. SAFETY INFORMATION

- Always ensure the heater is **fully submerged in water** before connecting it to a power source. Operating the heater out of water can cause damage and pose a fire hazard.
- The heater features a thickened metal body designed for **explosion-proof safety**. However, avoid dropping or striking the heater.
- Disconnect the power supply to the heater and all other aquarium equipment before performing any maintenance, water changes, or handling the heater.
- Do not operate the heater if the cord or plug is damaged.
- Keep out of reach of children.
- This product is designed for **indoor use only** in freshwater aquatic environments.

3. PRODUCT OVERVIEW

The URUQ 25W Submersible Aquarium Heater is designed for small aquariums, providing stable and consistent water temperatures for tropical fish, Betta tanks, and turtle tanks. Its compact design and external temperature controller offer convenience and reliability.



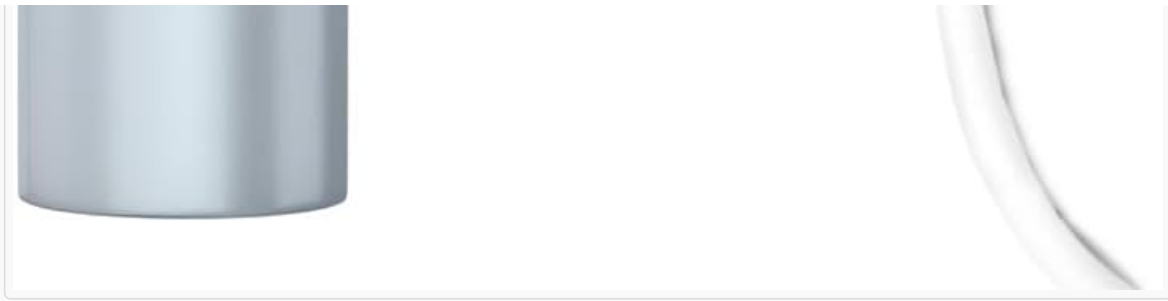


Image: URUQ 25W Submersible Aquarium Heater with its external temperature controller.

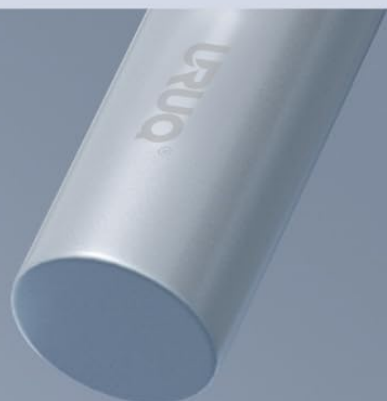
Key Features:

- **Power Output:** 25 Watts, suitable for 1-5 gallon (1.5L - 10L) tanks.
- **Compact Size:** Approximately 4.4 inches in length, allowing for discreet placement.
- **Adjustable Temperature:** Maintains water temperature between 78°F and 94°F (26°C and 34°C).
- **External Controller:** Independent temperature adjustment buttons located on the power cord for easy access.
- **Durable Construction:** Thickened metal body ensures explosion-proof safety, high strength, and resistance to corrosion.
- **Secure Installation:** Equipped with two powerful suction cups for stable mounting.
- **Low Water Level Operation:** Can be used in tanks with ultra-low water levels, provided the heating rod is fully submerged and water circulation is maintained.

More Thoughtful Details

Easy to use & protect fish safety

Metal Shell
Safe & Explosion-proof



Powerful Double Suction Cups
Safe & Stable



External Controller
Precise Temperature Control

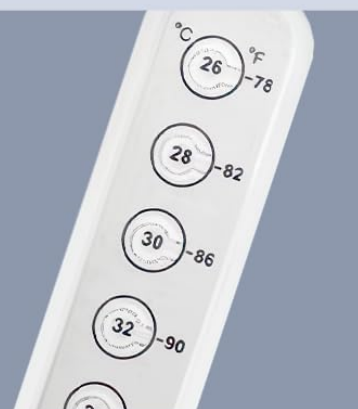


Image: Close-up showing the metal shell, double suction cups, and external controller.

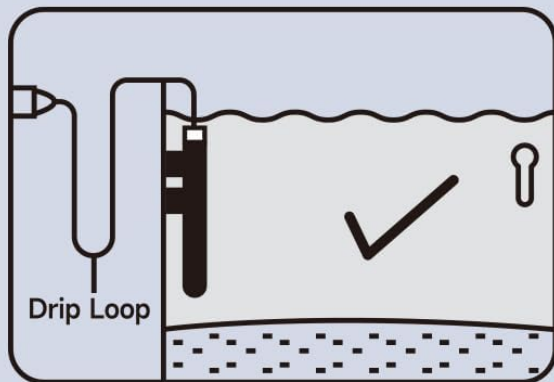
4. SETUP AND INSTALLATION

1. **Unpack:** Carefully remove the heater from its packaging. Inspect for any signs of damage.
2. **Placement:** Attach the two powerful suction cups to the heater body. Position the heater inside your aquarium, ensuring it is fully submerged in water. It can be installed vertically or horizontally.
3. **Low Water Level Use:** If using in a low water level setup (e.g., turtle tank), ensure the entire heating rod is submerged and that there is adequate water circulation around the heater.

4. **Power Connection:** Once the heater is securely placed and fully submerged, connect the power plug to a suitable electrical outlet.

Quick & Easy to Use

Please use the heating rod correctly to avoid safety problems



Specific Installation Illustration

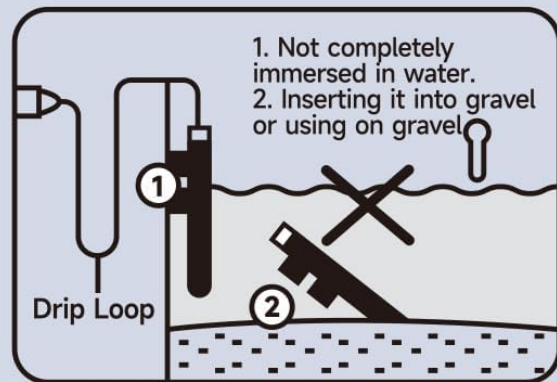
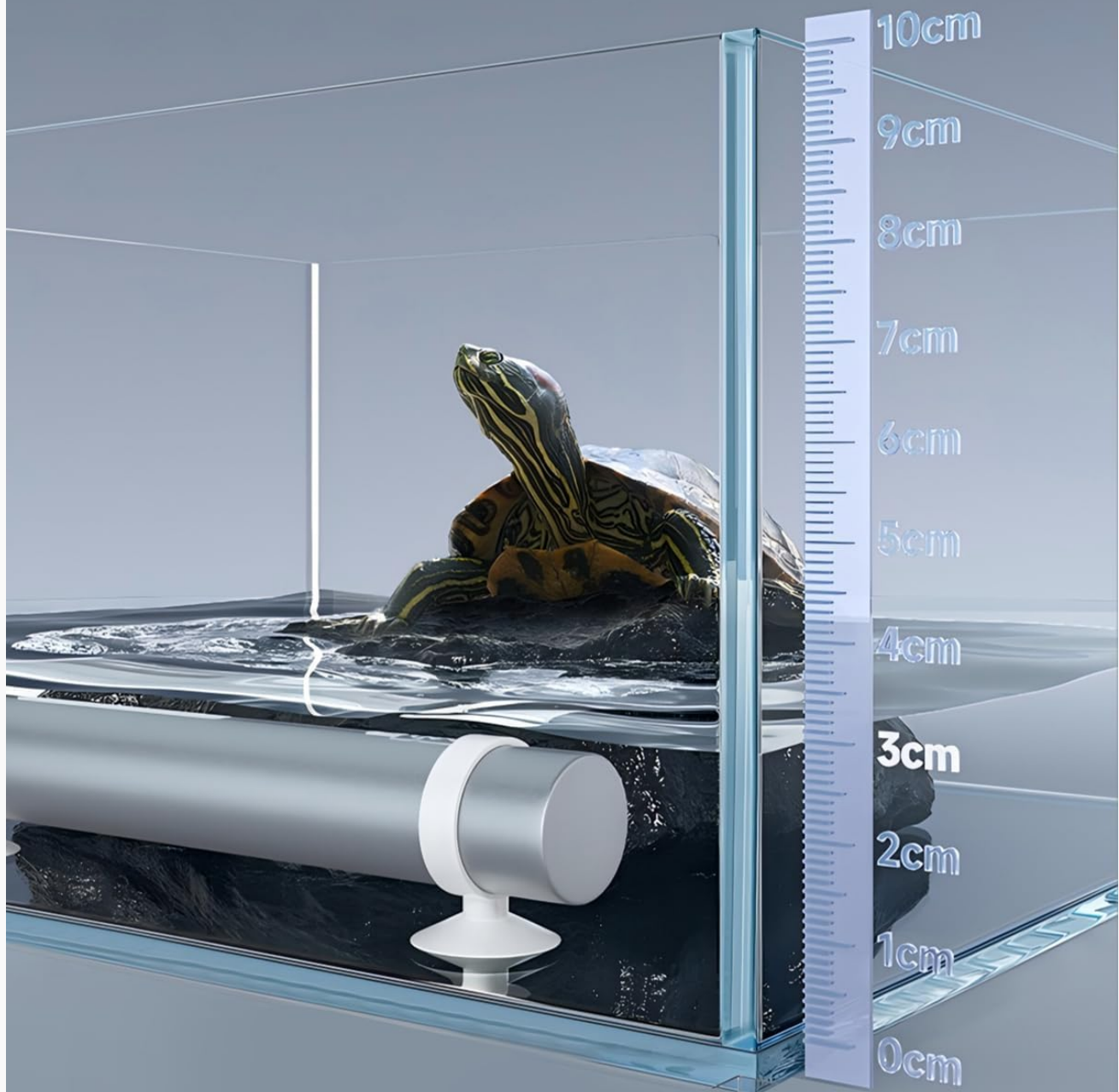


Diagram of Incorrect Installation

Image: Illustration demonstrating correct full submersion and incorrect partial submersion or burial in gravel.

Use at Ultra-Low Water Levels



*When using at low water level, the water level must be guaranteed to submerge the heating rod and ensure water circulation in the fish tank.

Image: The heater installed in a tank with a low water level, suitable for turtles, emphasizing full submersion of the heating element.

5. OPERATING INSTRUCTIONS

1. **Power On:** After proper installation and submersion, plug the heater into a power outlet. The heater will begin to warm the water.
2. **Adjusting Temperature:** Use the external controller located on the power cord to set the desired temperature. The temperature range is 78°F to 94°F (26°C to 34°C). Press the buttons on the controller to cycle through the available temperature settings.

3. **Monitoring:** It is recommended to use a separate aquarium thermometer to monitor the water temperature and ensure the heater is maintaining the desired level accurately. Allow a few hours for the tank water to stabilize after initial setup or temperature adjustments.
4. **Compatibility:** This 25W heater is designed for aquariums between 1 to 5 gallons (1.5L to 10L). Using it in larger tanks may result in insufficient heating.

URUQ Mini Aquarium Heater

Perfectly blends into aquatic landscapes



25W
Low power

78°F - 94°F
Adjustable temperature

1.5L - 10L
Best capacity

Image: The external controller displaying various temperature settings in Celsius and Fahrenheit.

6. MAINTENANCE

- **Cleaning:** Periodically clean the heater surface to prevent algae and mineral buildup. Always unplug the heater and allow it to cool completely before removing it from the water for cleaning. Use a soft cloth or sponge; avoid abrasive materials.
- **Water Changes:** Regular water changes are crucial for aquarium health. It is recommended to change approximately one-third of the water weekly. Ensure the heater is unplugged during water changes.
- **Inspection:** Regularly inspect the heater, power cord, and plug for any signs of wear, damage, or corrosion. If any damage is observed, discontinue use immediately.

7. TROUBLESHOOTING

Problem	Possible Cause	Solution
Heater not turning on.	No power, faulty outlet, damaged cord/plug.	Check power connection. Test outlet with another device. If cord/plug is damaged, discontinue use.
Water not heating to desired temperature.	Heater too small for tank size, incorrect temperature setting, heater not fully submerged, poor water circulation.	Ensure tank size is within 1-5 gallons. Verify temperature setting on controller. Confirm heater is fully submerged. Improve water circulation.
Temperature fluctuates or is inconsistent.	Poor water circulation, external temperature changes, faulty heater.	Ensure good water flow around the heater. Minimize large room temperature fluctuations. If problem persists, contact support.
Heater appears damaged.	Physical impact, manufacturing defect.	Immediately unplug and discontinue use. Contact customer support for assistance.

8. SPECIFICATIONS

Feature	Specification
Model	25W
Brand	URUQ
Power	25 Watts
Temperature Range	78°F - 94°F (26°C - 34°C)
Recommended Tank Size	1-5 Gallons (1.5L - 10L)
Heater Length	Approx. 4.4 inches
Material	Thickened Metal Body
Color	Metallic Silver
Mounting	Suction Cup (Submersible)
Usage Environment	Indoor
Item Weight	6.4 ounces
ASIN	B0DSZQMBP7

9. WARRANTY AND SUPPORT

URUQ is committed to providing quality products and excellent customer service. Your URUQ 25W Submersible Aquarium Heater comes with the following support:

- **24-Hour Customer Support:** For any inquiries or issues, our support team is available to provide quick responses.
- **2-Year Service Support:** We offer a 2-year service support period for your product.

For assistance, please contact us via email:

support@iuruq.net

support@iuruq.com



Image: URUQ customer support details, including 24-hour reply and 2-year service support.