

AIXPI R6S

AIXPI Ring Light with Overhead Phone Mount

Model: R6S | Brand: AIXPI

INTRODUCTION

The AIXPI Ring Light with Overhead Phone Mount is a versatile tool designed for content creators, live streamers, and anyone needing professional-quality lighting and stable phone positioning for video recording, online meetings, and photography. This manual provides comprehensive instructions for setting up, operating, and maintaining your device to ensure optimal performance.



Figure 1: AIXPI Ring Light with Overhead Phone Mount in various configurations.

PRODUCT FEATURES

- **Professional Lighting Control:** Designed with 144 CRI90+ ultra-bright LED beads (1000 lumens), achieve studio-quality lighting in 3 modes: warm light (2700K) for cozy ambiance, natural light (4500K) for makeup tutorials, and cold light (6500K) for crisp video calls. The 5-level brightness lets you fine-tune lighting from morning coffee reviews to midnight baking ASMR sessions seamlessly.
- **Sturdy 90° Locking Hinge:** This overhead tripod is made of aluminium alloy, height range with light is from 24.2-45.36inch (61.5-115cm). Featuring patented hinge technology, it securely locks the arm at a 90° vertical angle, ensuring stable overhead filming without any slippage.
- **Multi-scene Warrior:** The center phone holder flips 210° between selfies to product shoots, with 360° spin for portrait & landscape. Fits phones 2.44-3.54" wide (iPhone 15 Pro Max to S24 Ultra) and stays firmly in place, even when tilted 90° overhead. Additionally, the ring light is fully adjustable, rotating 360° to meet your specific lighting needs.
- **Travel-Ready Convenience:** No assembly needed! Includes a heavy-duty desk clamp (up to 3.75in), USB-

powered ring light (cord included), and wireless Bluetooth remote (connects to your phone). Foldable to 10.2×3×14.5in, weighs only 1.15lbs - ideal for Youtubers on the go.

- **Direct From Anywhere:** This USB-powered ring light and stand (optimal power supply 5V-2A) can be charged via a power bank or laptop, ensuring continuous use. The included remote is compatible with both iOS and Android devices, enabling hands-free shooting from up to 33 feet (10 meters) away—ideal for solo unboxings, workout videos, and family photos.

PACKAGE CONTENTS

Please verify that all items are present in the package:

- AIXPI Ring Light with Overhead Phone Mount Unit
- Heavy-Duty Desk Clamp
- USB Power Cable (Type-C)
- Wireless Bluetooth Remote Control (with 1 CR2 battery included)



Figure 2: Components and dimensions of the AIXPI Ring Light system.

SETUP INSTRUCTIONS

Follow these steps to set up your AIXPI Ring Light with Overhead Phone Mount:

1. **Attach the Desk Clamp:** Securely attach the heavy-duty desk clamp to a stable surface, such as a desk or table edge, ensuring the surface thickness is within 3.75 inches (9 cm). Tighten the screw until the clamp is firm.
2. **Insert the Main Unit:** Slide the base of the ring light unit into the opening of the desk clamp. Ensure it is fully seated and stable.
3. **Adjust the Arm and Ring Light:** Extend the aluminum alloy arm to your desired height (24.2-45.36 inches / 61.5-115 cm). Utilize the 90° locking hinge for stable overhead positioning. The ring light itself can rotate 360° and the phone holder can flip 210° and rotate 360° for optimal camera angles.
4. **Connect Power:** Plug the USB Type-C cable into the ring light's port and connect the other end to a USB power source (e.g., power bank, laptop, or 5V-2A USB wall adapter).
5. **Pair Bluetooth Remote:** Turn on the Bluetooth remote control. On your smartphone, go to Bluetooth settings and search for available devices. Select the remote control to pair. Once paired, you can use it to trigger your phone's camera from up to 33 feet (10 meters) away.

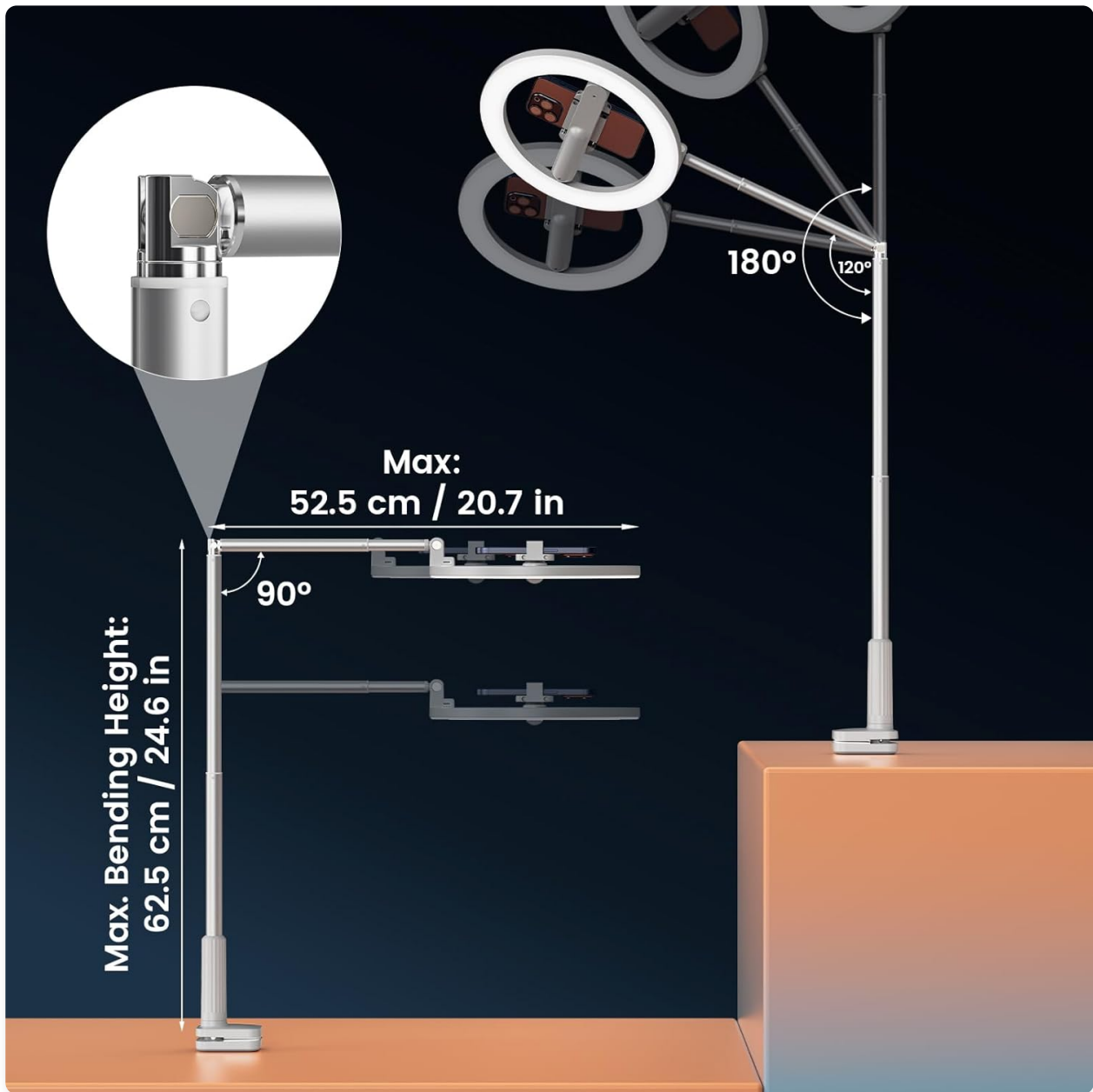


Figure 3: Adjustable height and arm articulation for flexible setup.

OPERATING INSTRUCTIONS

Operating your AIXPI Ring Light is straightforward:

Lighting Control

The ring light offers three light modes and five brightness levels:

- **Power On/Off:** Press the power button on the inline controller to turn the light on or off.
- **Change Light Mode:** Press the mode button to cycle through Warm Light (2700K), Natural Light (4500K), and Cold Light (6500K).
- **Adjust Brightness:** Use the '+' and '-' buttons to increase or decrease the brightness across 5 levels (20%, 40%, 60%, 80%, 100%).

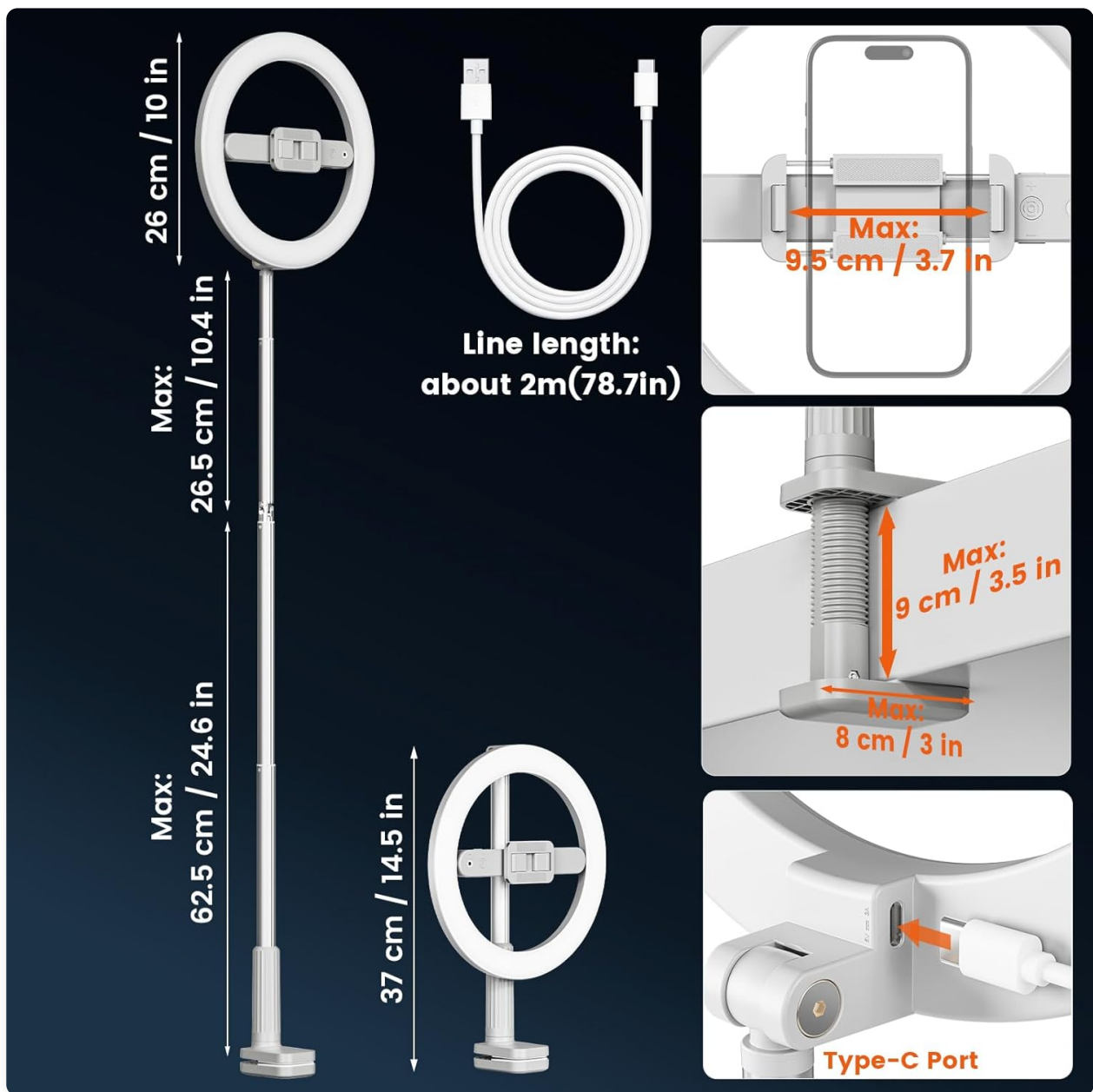


Figure 4: Control panel for light modes and brightness adjustment.

Phone Holder Adjustments

The phone holder is designed for maximum flexibility:

- **Rotation:** The phone holder can rotate 360° to switch between portrait and landscape orientations.
- **Flip:** The holder can flip 210° to easily switch between front-facing and rear-facing camera shots.
- **Compatibility:** It accommodates phones with widths between 2.44-3.54 inches.

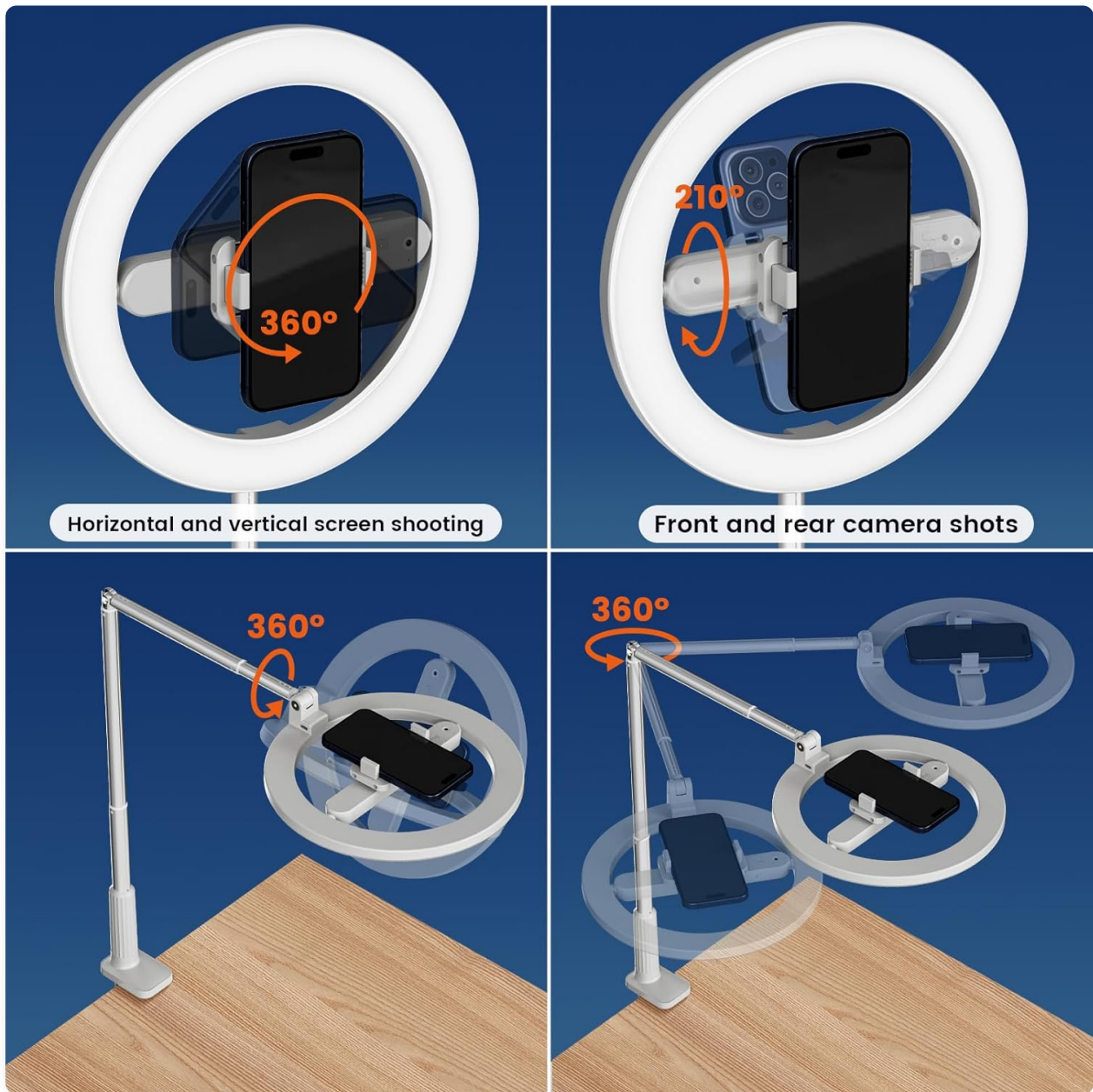


Figure 5: Phone holder flexibility for various shooting angles.

Wireless Bluetooth Remote

Use the included remote for hands-free operation:

- Ensure the remote is paired with your phone via Bluetooth.
- Open your phone's camera app.
- Press the button on the remote to trigger the shutter for photos or start/stop video recording.



Figure 6: Various applications of the AIXPI Ring Light.

Product Demonstration Video

Your browser does not support the video tag.

Video 1: Official AIXPI demonstration of the overhead phone mount with ring light, highlighting its 1000 lumens brightness and features.

MAINTENANCE

To ensure the longevity and optimal performance of your AIXPI Ring Light:

- **Cleaning:** Use a soft, dry cloth to wipe down the ring light and stand. Avoid abrasive cleaners or solvents that could damage the finish or electronic components.
- **Storage:** When not in use, fold the unit to its compact size (10.2×3×14.5in) and store it in a dry, cool place away from direct sunlight and excessive dust.
- **Cable Care:** Do not bend or crimp the USB power cable excessively. Always unplug by grasping the

connector, not the cable itself.

- **Battery Replacement:** The Bluetooth remote uses a CR2 battery. Replace it when the remote's performance degrades.

TROUBLESHOOTING

If you encounter issues with your AIXPI Ring Light, refer to the following common problems and solutions:

Problem	Possible Cause	Solution
Ring light does not turn on.	No power, loose connection, faulty USB adapter.	Ensure USB cable is securely connected. Try a different USB port or power adapter (ensure 5V-2A output).
Bluetooth remote does not connect.	Remote battery low, not in pairing mode, phone Bluetooth off.	Check remote battery. Ensure phone's Bluetooth is on and remote is in pairing mode. Re-pair the remote if necessary.
Stand feels unstable or wobbles.	Clamp not tightened sufficiently, uneven surface, arm extended too far.	Ensure the desk clamp is fully tightened to a stable, flat surface. Do not over-extend the arm beyond its recommended limits.
Phone does not fit in holder.	Phone too wide.	Verify your phone's width is within the 2.44-3.54 inch range.

SPECIFICATIONS

Attribute	Value
Brand	AIXPI
Model Number	R6S
UPC	747923861812
Package Dimensions	15.35 x 10.59 x 3.27 inches
Item Weight	1.74 pounds
Batteries	1 CR2 battery required (included)
Light Modes	3 (Warm, Natural, Cold)
Brightness Levels	5
Power Supply	USB (Optimal 5V-2A)
Phone Holder Width	2.44 - 3.54 inches
Max. Desk Clamp Thickness	3.75 inches (9 cm)

Attribute	Value
Height Range (with light)	24.2 - 45.36 inches (61.5 - 115 cm)
Country of Origin	China

WARRANTY AND SUPPORT

For warranty information and customer support, please contact AIXPI directly through their official website or the retailer from whom you purchased the product. Keep your purchase receipt as proof of purchase.